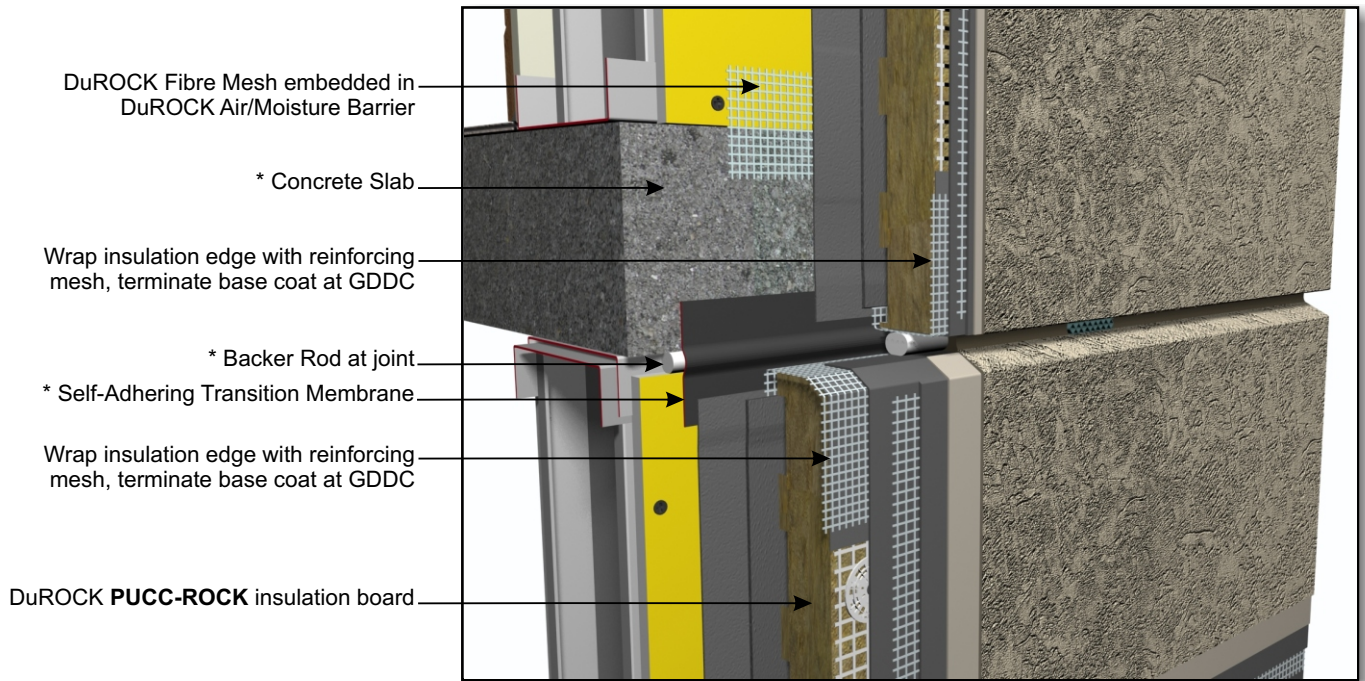


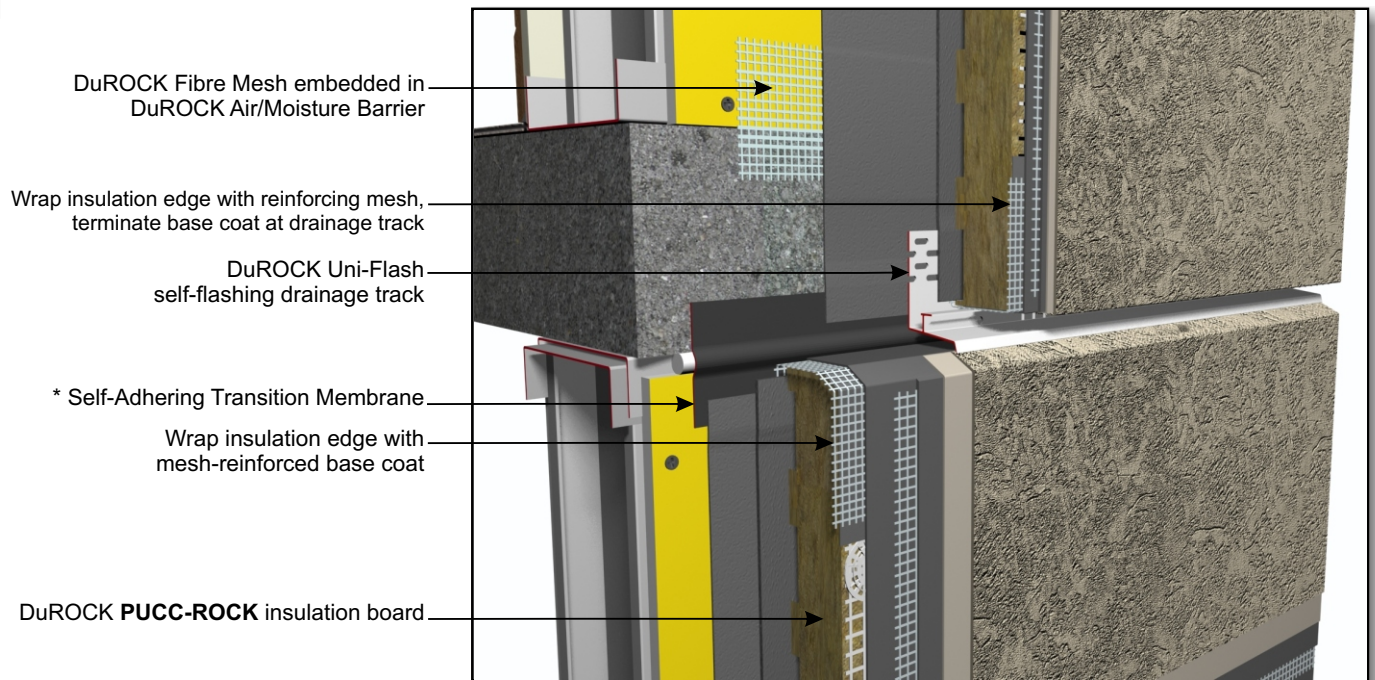
**PUCCS NC Non-Combustible EIFS Cladding
 with PUCC-ROCK GDDC Mineral Wool Insulation**

DuROCK
 ARCHITECTURAL FINISHING SYSTEMS



- DuROCK Fibre Mesh embedded in DuROCK Air/Moisture Barrier
- * Concrete Slab
- Wrap insulation edge with reinforcing mesh, terminate base coat at GDDC
- * Backer Rod at joint
- * Self-Adhering Transition Membrane
- Wrap insulation edge with reinforcing mesh, terminate base coat at GDDC
- DuROCK **PUCC-ROCK** insulation board

D05, SEALED HORIZONTAL EXPANSION JOINT



- DuROCK Fibre Mesh embedded in DuROCK Air/Moisture Barrier
- Wrap insulation edge with reinforcing mesh, terminate base coat at drainage track
- DuROCK Uni-Flash self-flashing drainage track
- * Self-Adhering Transition Membrane
- Wrap insulation edge with mesh-reinforced base coat
- DuROCK **PUCC-ROCK** insulation board

D06, DRAINED HORIZONTAL EXPANSION JOINT

(* by others)