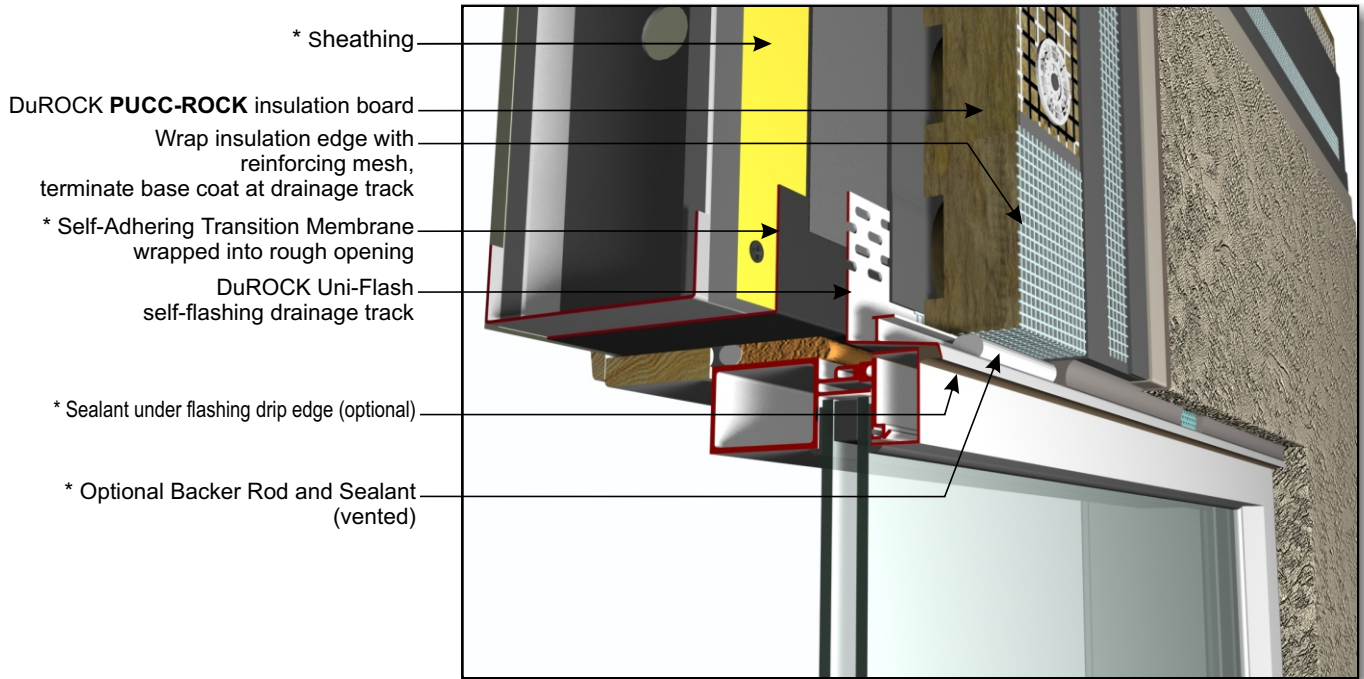


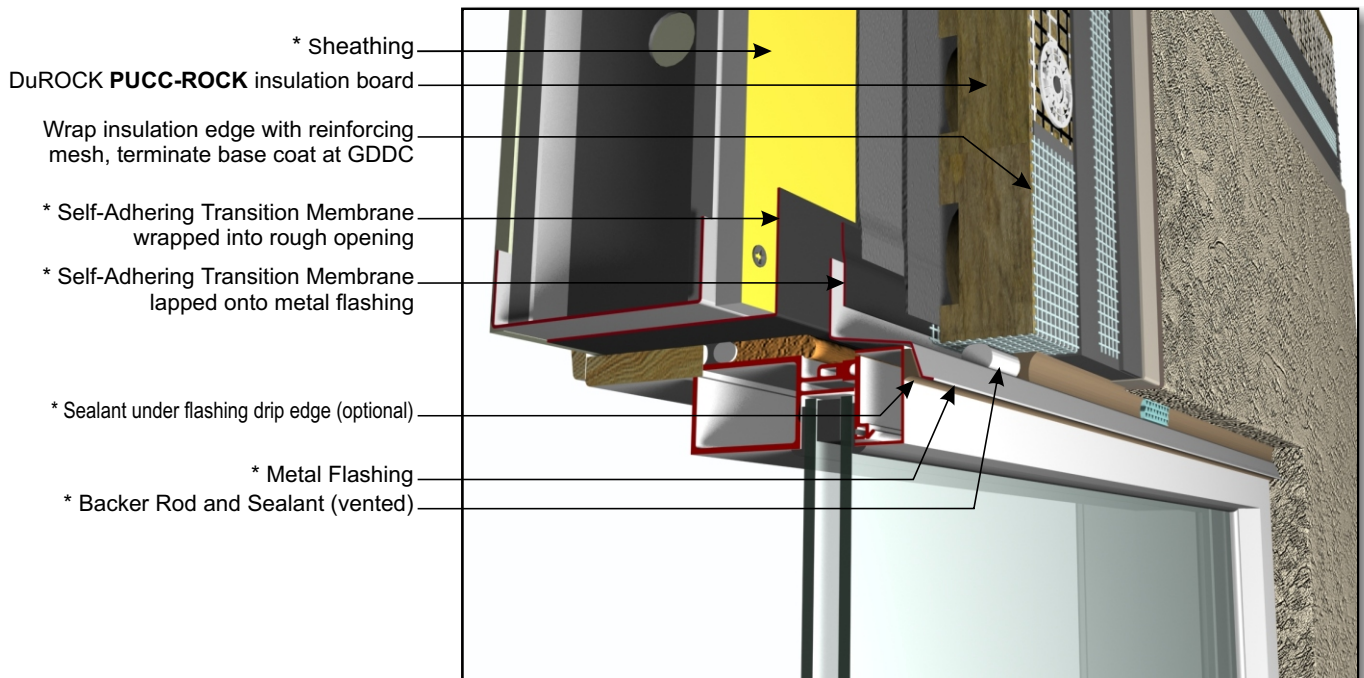
**PUCCS NC Non-Combustible EIFS Cladding  
 with PUCC-ROCK GDDC Mineral Wool Insulation**

**DuROCK**  
 ARCHITECTURAL FINISHING SYSTEMS



- \* Sheathing
- DuROCK **PUCC-ROCK** insulation board
- Wrap insulation edge with reinforcing mesh, terminate base coat at drainage track
- \* Self-Adhering Transition Membrane wrapped into rough opening
- DuROCK Uni-Flash self-flashing drainage track
- \* Sealant under flashing drip edge (optional)
- \* Optional Backer Rod and Sealant (vented)

**D01, WINDOW HEADER WITH DuROCK UNI-FLASH**



- \* Sheathing
- DuROCK **PUCC-ROCK** insulation board
- Wrap insulation edge with reinforcing mesh, terminate base coat at GDDC
- \* Self-Adhering Transition Membrane wrapped into rough opening
- \* Self-Adhering Transition Membrane lapped onto metal flashing
- \* Sealant under flashing drip edge (optional)
- \* Metal Flashing
- \* Backer Rod and Sealant (vented)

**D02, WINDOW HEADER WITH METAL FLASHING**

(\* by others)