

* Sheathing

DuROCK Air/Moisture Barrier

DuROCK Moisture Barrier/Adhesive

DuROCK Reinforcing Mesh
embedded in DuROCK Base Coat

Mechanical Fastener

DuROCK Finish Coat

DuROCK Pucc-Rock insulation board
with integral reinforcing mesh

Wrap insulation edge with reinforcing
mesh, terminate base coat at drainage track

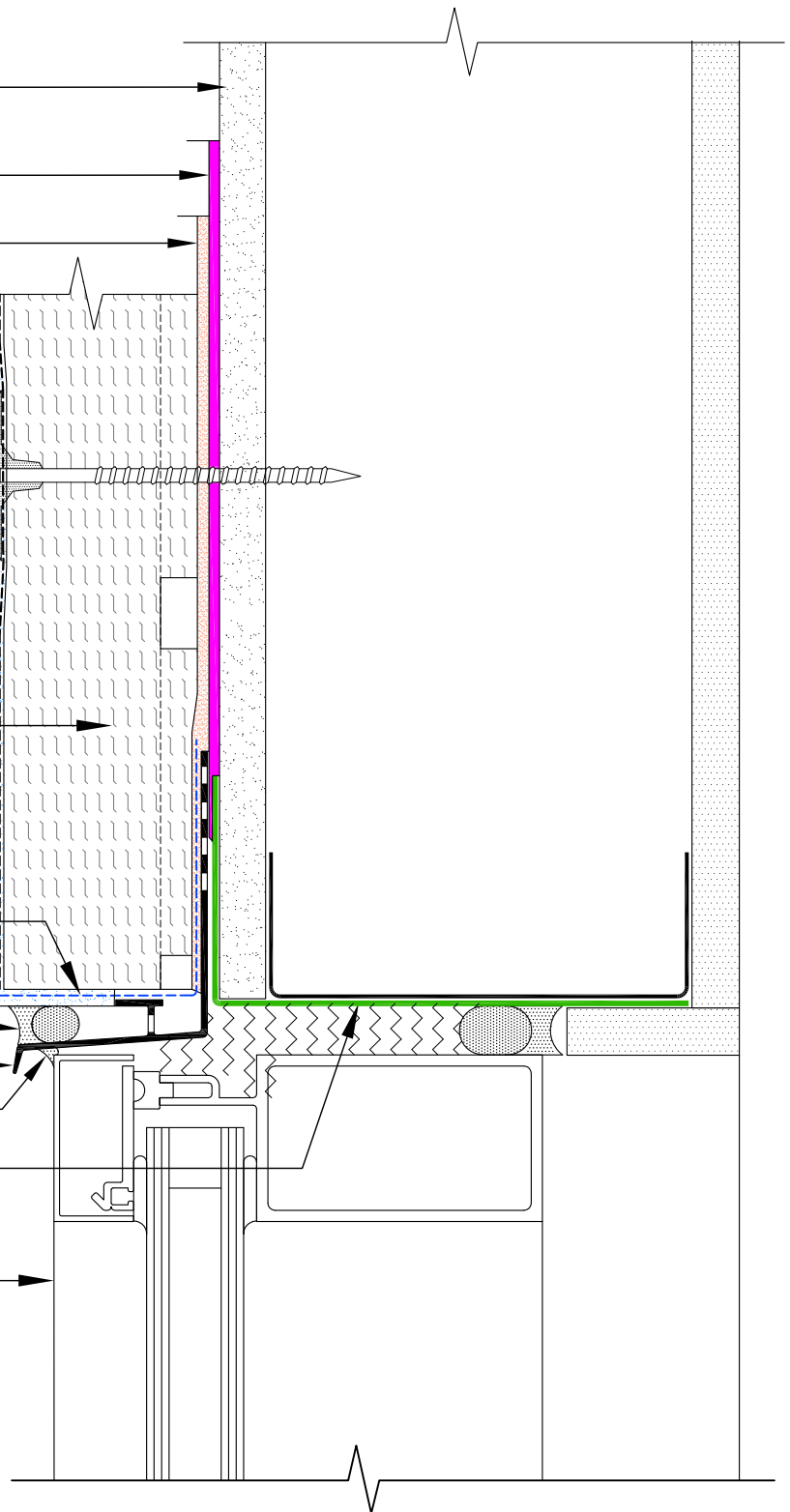
* Backer Rod and Sealant, vented (optional)

DuROCK Uni-Flash

* Sealant under Uni-Flash drip edge (optional)

* Self-Adhering Transition Membrane
wrapped into rough opening

* Window Frame



(* by others)

DuROCK SYSTEM:

PUCCS-NC

(NON-COMBUSTIBLE EIFS CLADDING WITH Pucc-ROCK INSULATION)

DRAWING TITLE:

WINDOW HEADER WITH DuROCK PVC UNI-FLASH

This detail complements the corresponding system specification and illustrates the system configuration for the depicted construction. Visit www.durock.com for the latest revisions and contact DuROCK for project-specific details to suit conditions other than those depicted. DuROCK assumes no liability for the architecture, design, engineering, or workmanship of any project.



Alfacing International Limited

101-B ROYTEC ROAD
WOODBRIDGE, ONTARIO
TEL : (905) 856-0133, FAX : (905) 856-9654
www.durock.com

ARCHITECTURAL FINISHING SYSTEMS

REVISION: 01 MAR 2020

ISSUED: JAN 2019

DRAWN: RIZ

SCALE: NTS

PUCCS-NC
D-01