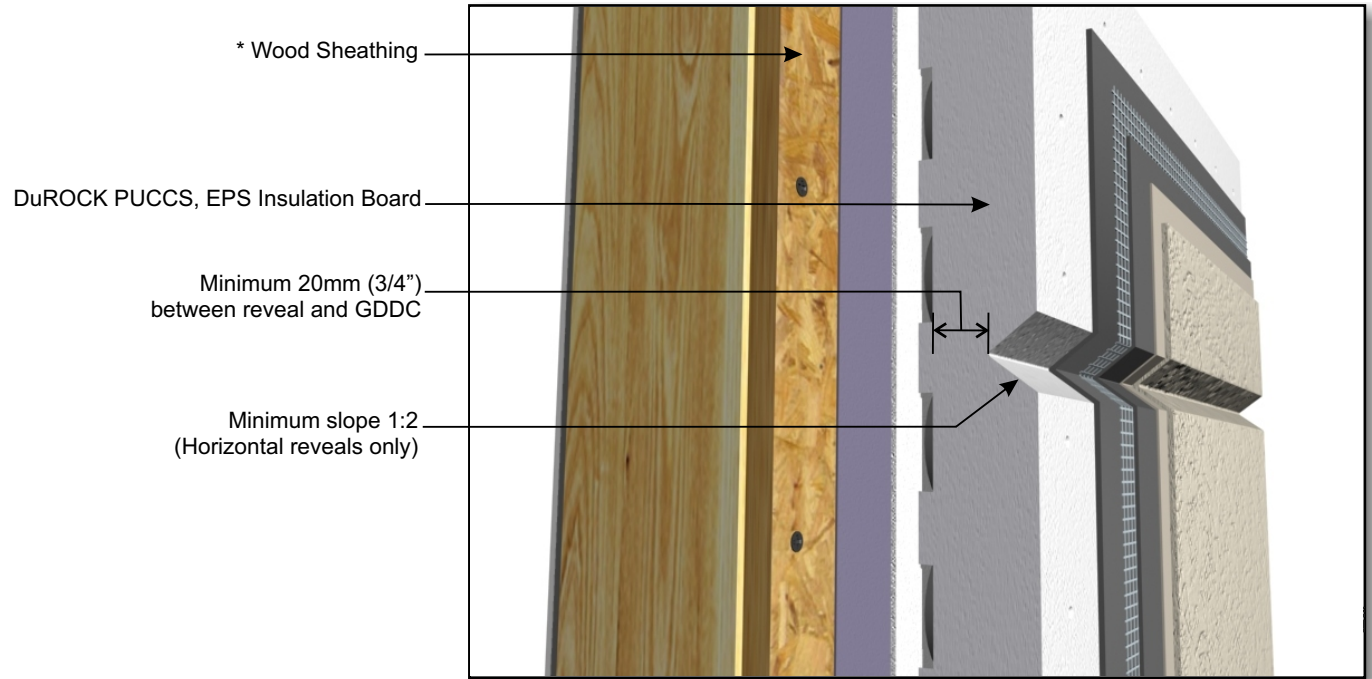


# DuROCK PUCCS EIFS

## Exterior Insulation Finish System for Low Rise and Residential Construction

**DuROCK**  
 ARCHITECTURAL FINISHING SYSTEMS



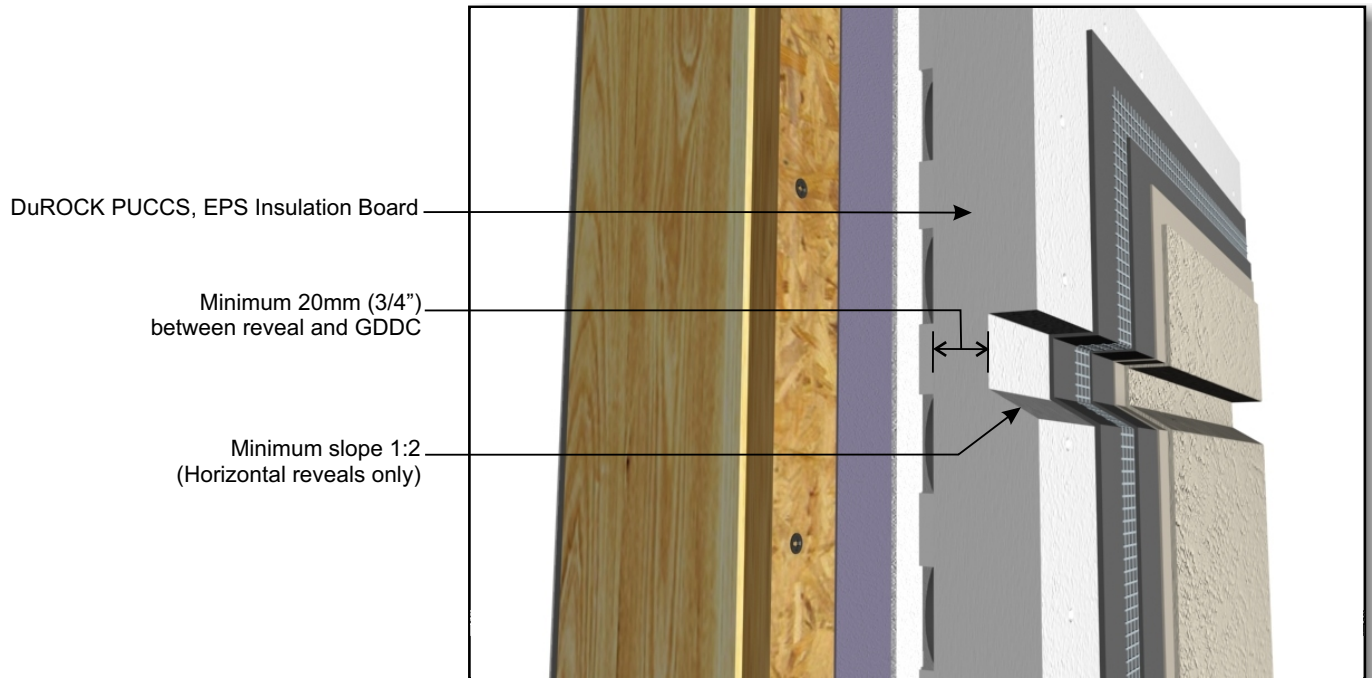
\* Wood Sheathing

DuROCK PUCCS, EPS Insulation Board

Minimum 20mm (3/4")  
between reveal and GDDC

Minimum slope 1:2  
(Horizontal reveals only)

**PUCCS-LRRC (18)**  
AESTHETIC REVEAL (TYPE A)



DuROCK PUCCS, EPS Insulation Board

Minimum 20mm (3/4")  
between reveal and GDDC

Minimum slope 1:2  
(Horizontal reveals only)

(\* by others)

**PUCCS-LRRC (18A)**  
AESTHETIC REVEAL (TYPE B)