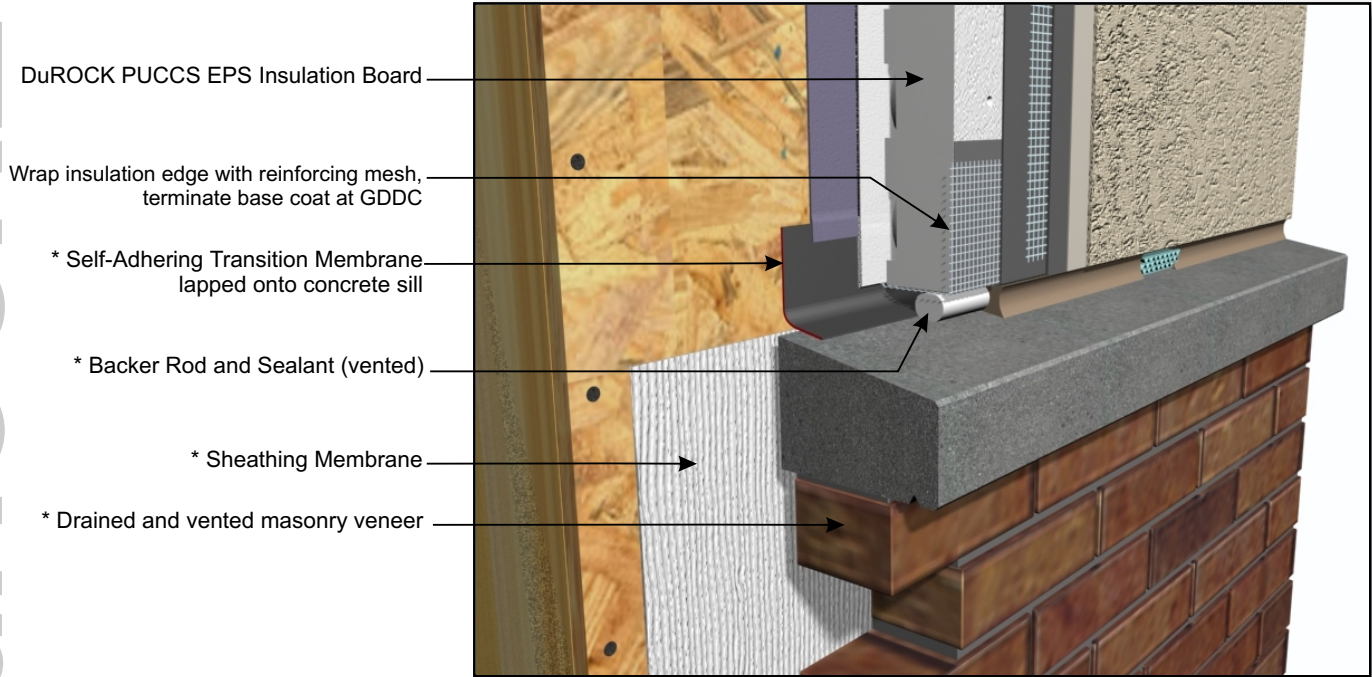


# DuROCK PUCCS EIFS

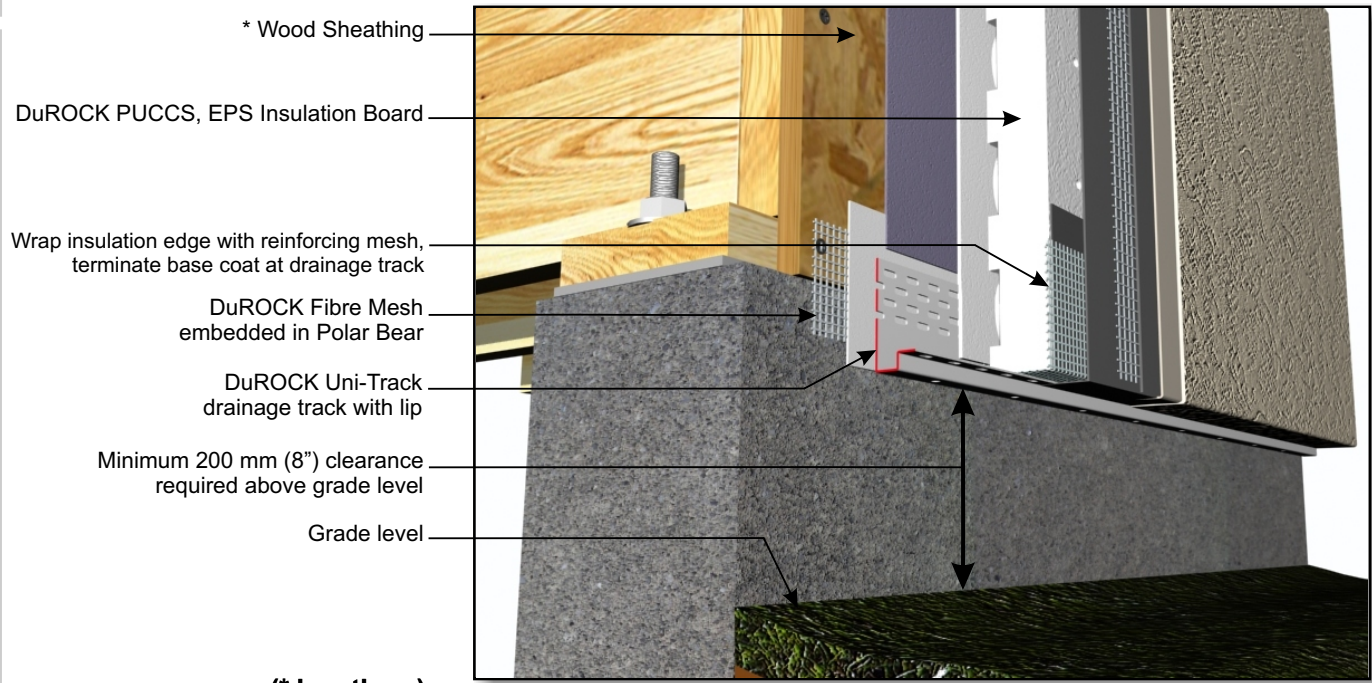
## Exterior Insulation Finish System for Low Rise and Residential Construction

ARCHITECTURAL FINISHING SYSTEMS



- DuROCK PUCCS EPS Insulation Board
- Wrap insulation edge with reinforcing mesh, terminate base coat at GDDC
- \* Self-Adhering Transition Membrane lapped onto concrete sill
- \* Backer Rod and Sealant (vented)
- \* Sheathing Membrane
- \* Drained and vented masonry veneer

**PUCCS-LRRC (13)**  
TERMINATION AT CONCRETE SILL WITH MEMBRANE (DRAINED)



- \* Wood Sheathing
- DuROCK PUCCS, EPS Insulation Board
- Wrap insulation edge with reinforcing mesh, terminate base coat at drainage track
- DuROCK Fibre Mesh embedded in Polar Bear
- DuROCK Uni-Track drainage track with lip
- Minimum 200 mm (8") clearance required above grade level
- Grade level

(\* by others)

**PUCCS-LRRC (14)**  
TERMINATION AT GRADE