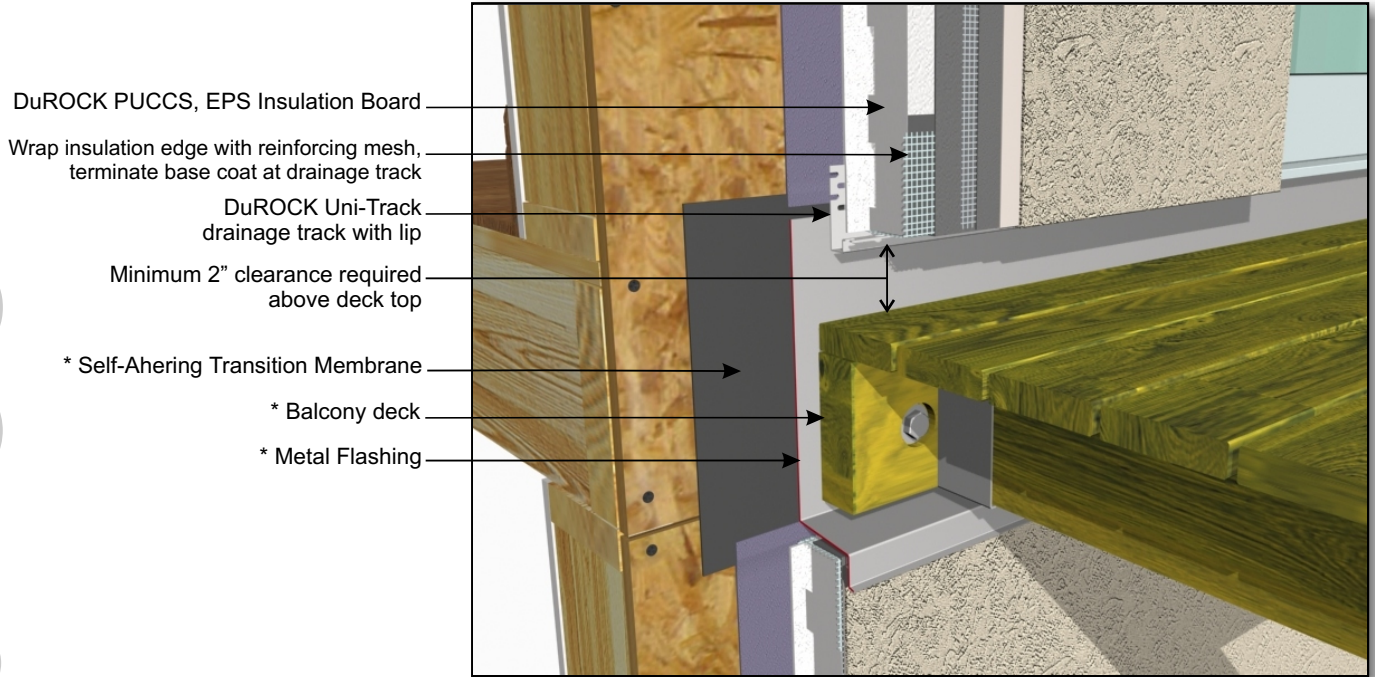


DuROCK PUCCS EIFS

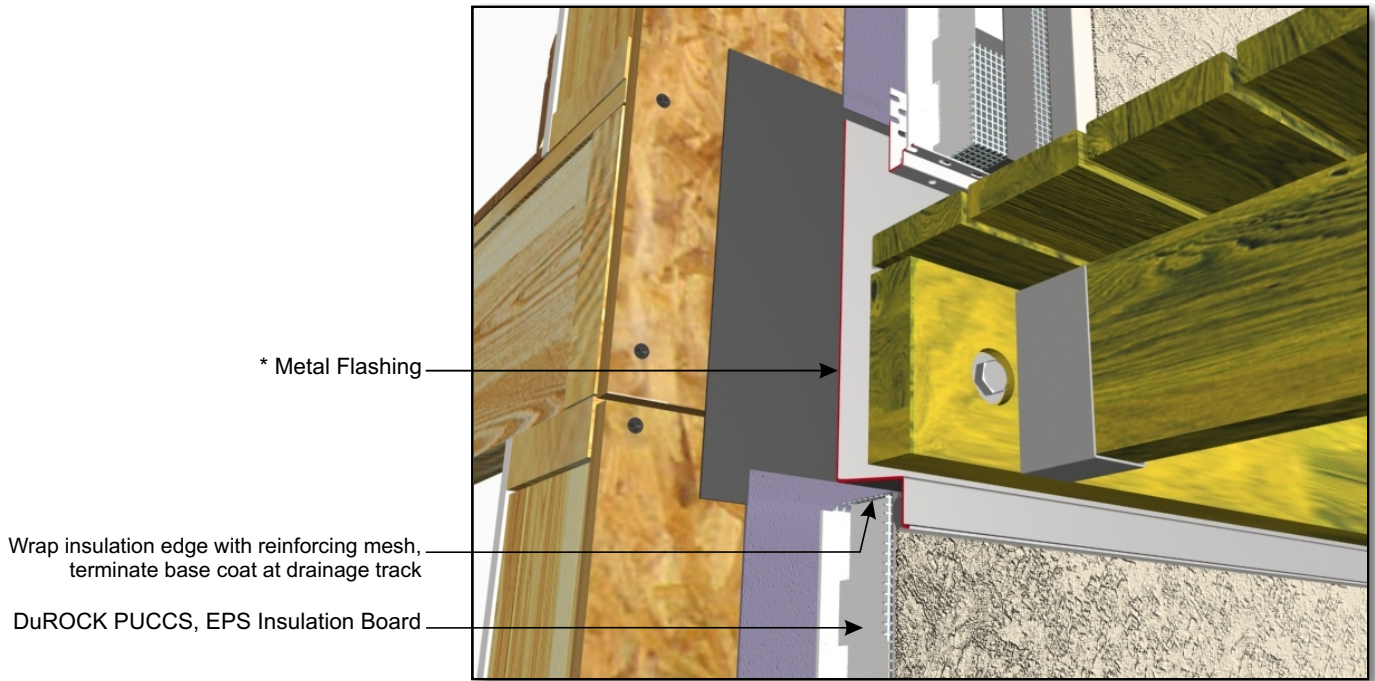
Exterior Insulation Finish System for Low Rise and Residential Construction

DuROCK
 ARCHITECTURAL FINISHING SYSTEMS



- DuROCK PUCCS, EPS Insulation Board
- Wrap insulation edge with reinforcing mesh, terminate base coat at drainage track
- DuROCK Uni-Track drainage track with lip
- Minimum 2" clearance required above deck top
- * Self-Ahering Transition Membrane
- * Balcony deck
- * Metal Flashing

PUCCS-LRRC (09)
TERMINATION AT BALCONY/DECK (VIEW A)



- * Metal Flashing
- Wrap insulation edge with reinforcing mesh, terminate base coat at drainage track
- DuROCK PUCCS, EPS Insulation Board

PUCCS-LRRC (09A)
TERMINATION AT BALCONY/DECK (VIEW B)