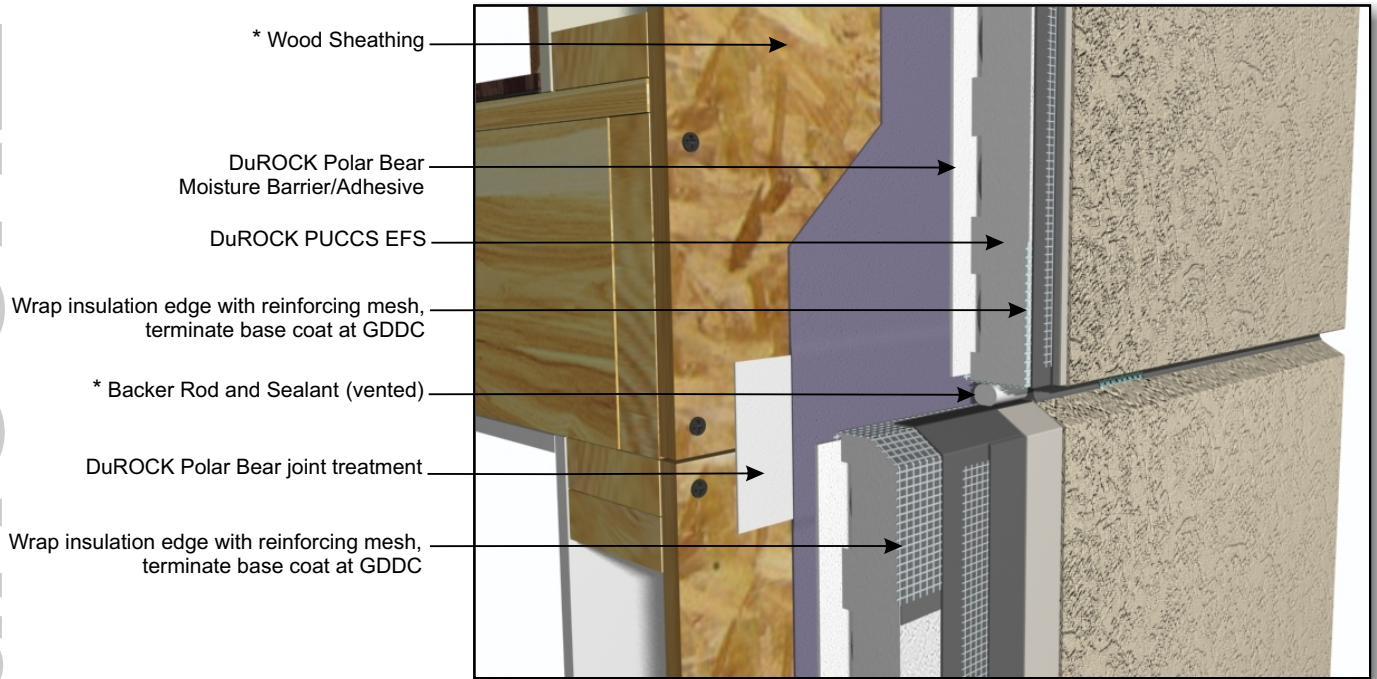


# DuROCK PUCCS EIFS

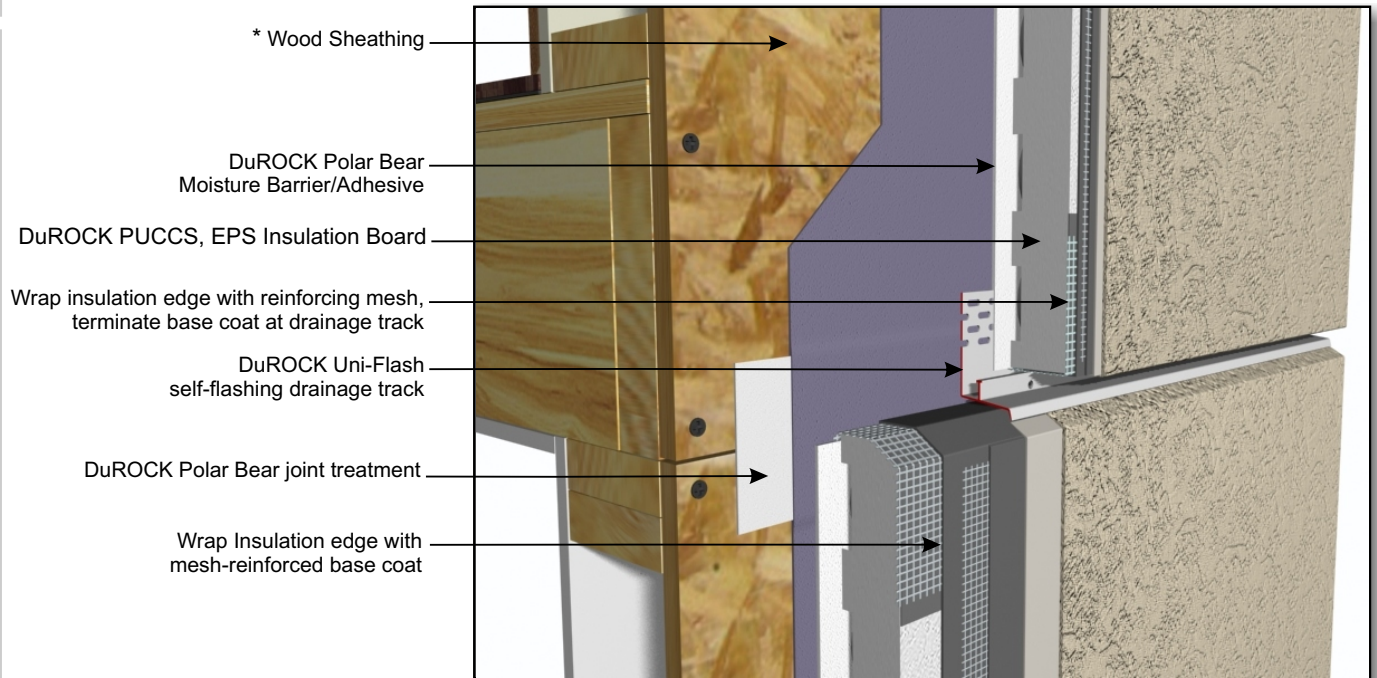
## Exterior Insulation Finish System for Low Rise and Residential Construction

**DuROCK**  
 ARCHITECTURAL FINISHING SYSTEMS



- \* Wood Sheathing
- DuROCK Polar Bear Moisture Barrier/Adhesive
- DuROCK PUCCS EIFS
- Wrap insulation edge with reinforcing mesh, terminate base coat at GDDC
- \* Backer Rod and Sealant (vented)
- DuROCK Polar Bear joint treatment
- Wrap insulation edge with reinforcing mesh, terminate base coat at GDDC

**PUCCS-LRRC (07)**  
HORIZONTAL EXPANSION JOINT (SEALED)



- \* Wood Sheathing
- DuROCK Polar Bear Moisture Barrier/Adhesive
- DuROCK PUCCS, EPS Insulation Board
- Wrap insulation edge with reinforcing mesh, terminate base coat at drainage track
- DuROCK Uni-Flash self-flashing drainage track
- DuROCK Polar Bear joint treatment
- Wrap Insulation edge with mesh-reinforced base coat

(\* by others)

**PUCCS-LRRC (08)**  
HORIZONTAL EXPANSION JOINT (DRAINED)