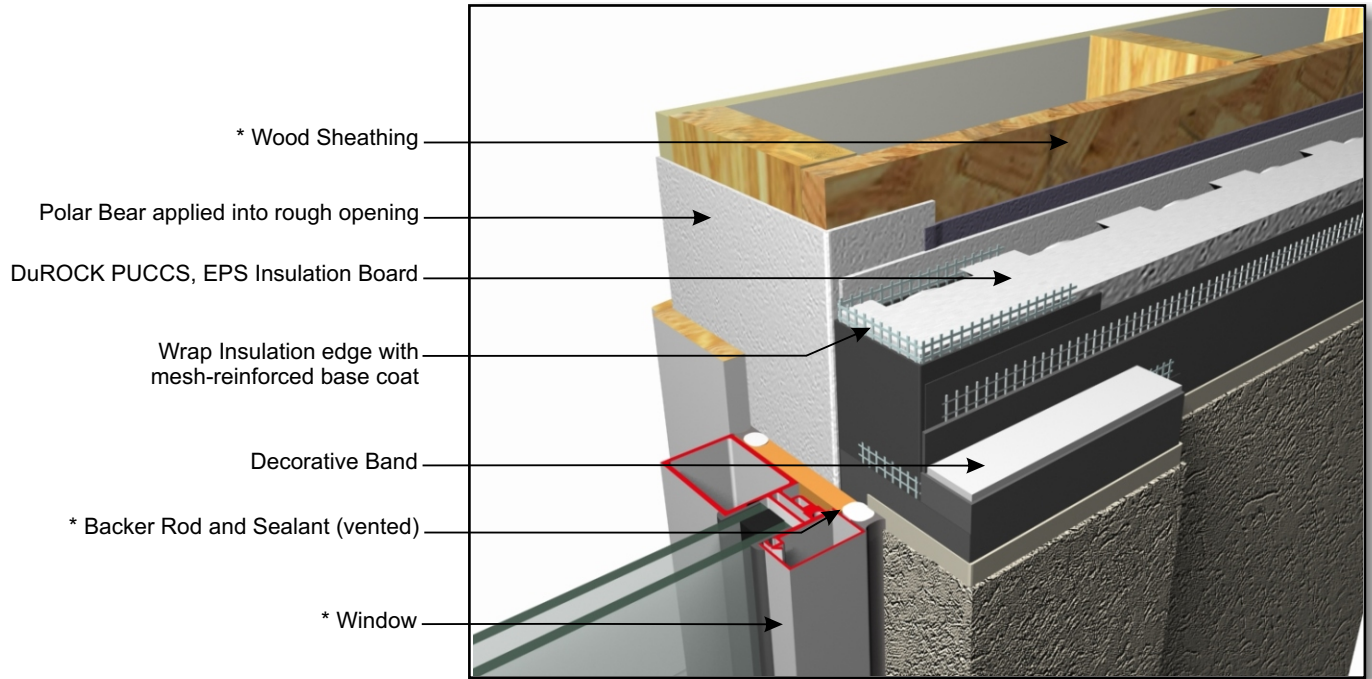


DuROCK PUCCS EIFS

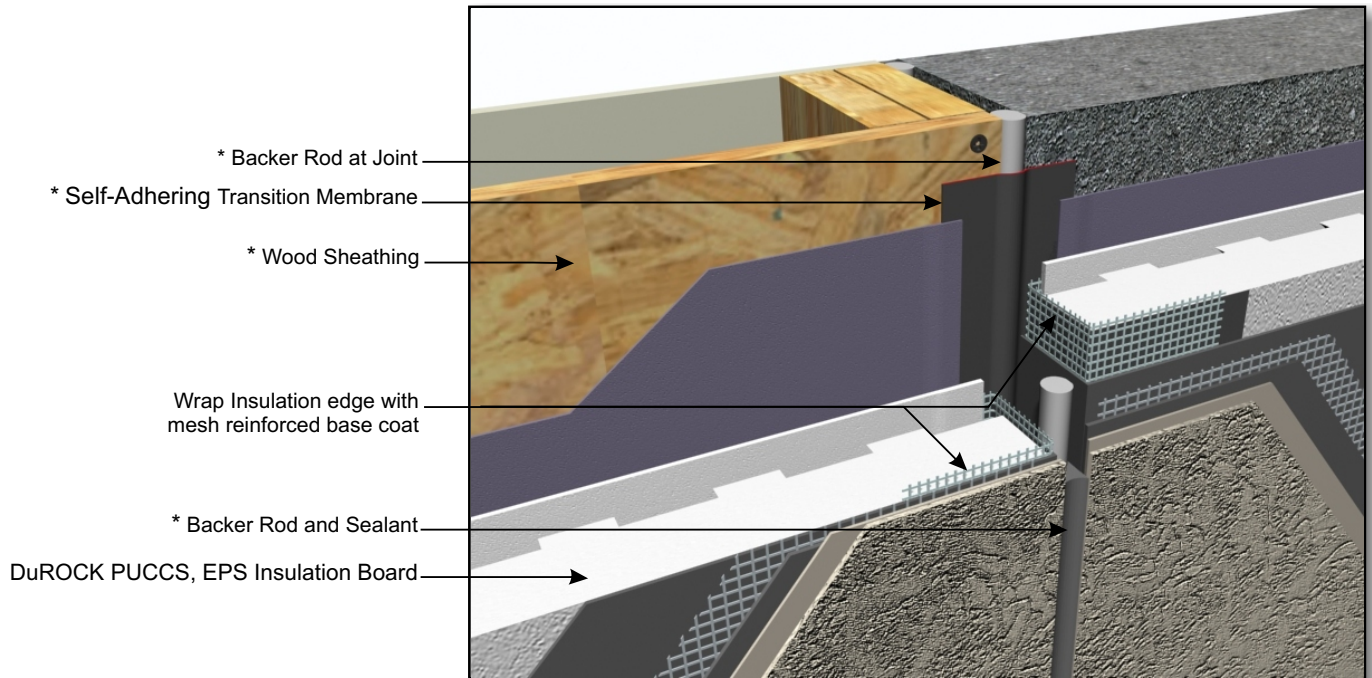
Exterior Insulation Finish System for Low Rise and Residential Construction

DuROCK
 ARCHITECTURAL FINISHING SYSTEMS



- * Wood Sheathing
- Polar Bear applied into rough opening
- DuROCK PUCCS, EPS Insulation Board
- Wrap Insulation edge with mesh-reinforced base coat
- Decorative Band
- * Backer Rod and Sealant (vented)
- * Window

PUCCS-LRRC (05)
WINDOW JAMB DETAIL



- * Backer Rod at Joint
- * Self-Adhering Transition Membrane
- * Wood Sheathing
- Wrap Insulation edge with mesh reinforced base coat
- * Backer Rod and Sealant
- DuROCK PUCCS, EPS Insulation Board

(* by others)

PUCCS-LRRC (06)
VERTICAL EXPANSION JOINT, JUNCTION WITH CONCRETE WALL