

# DuROCK PUCCS EIFS

## Exterior Insulation Finish System for Low Rise and Residential Construction



CCMC No. 12969-R

DuROCK

DuROCK Polar Bear  
joint treatment

DuROCK Roller Bear  
Moisture Barrier

DuROCK Polar Bear  
Moisture Barrier/Adhesive

PUCCS EPS Insulation with  
10mm Geometrically Defined  
Drainage Cavity (GDCC)

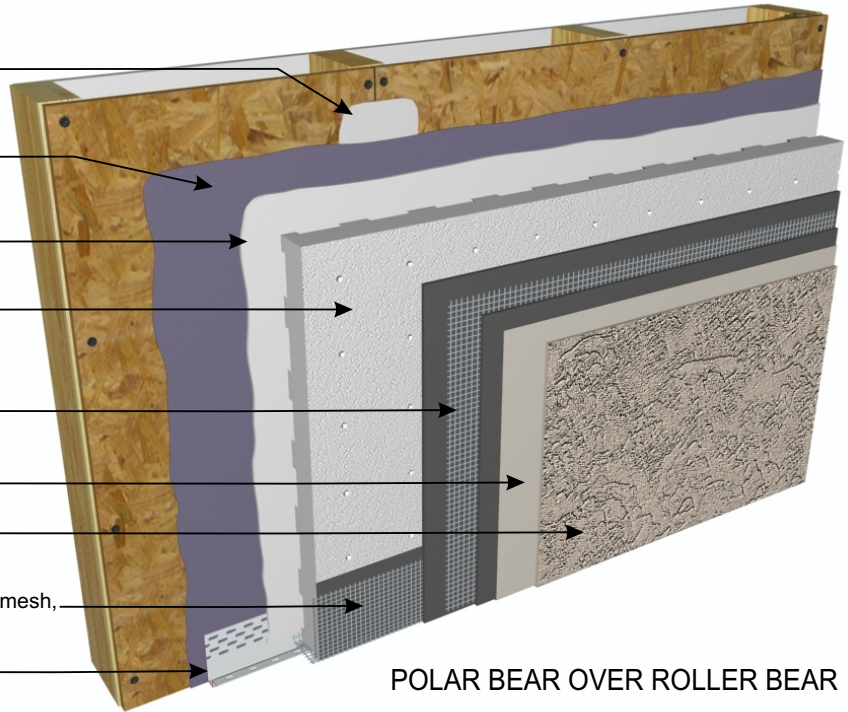
DuROCK Reinforcing Mesh  
embedded in Prep Coat

DuROCK Base Primer (optional)

DuROCK Finish Coat

Wrap insulation edge with reinforcing mesh,  
terminate base coat at drainage track

DuROCK Uni-Track  
drainage track with lip

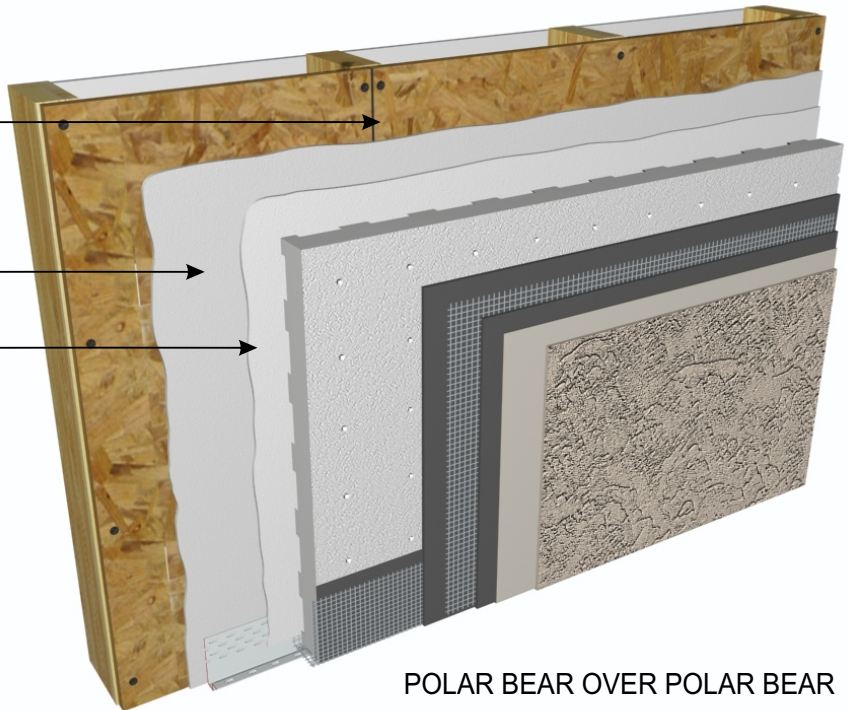


POLAR BEAR OVER ROLLER BEAR

No joint treatment required

DuROCK Polar Bear  
Air/Moisture Barrier

DuROCK Polar Bear  
Moisture Barrier/Adhesive



POLAR BEAR OVER POLAR BEAR

**Note:** For clarity of illustration  
all details depict Roller Bear as  
the first coat moisture barrier and  
Polar Bear as the second coat  
moisture barrier/adhesive.



Alfacing International Limited  
101 B.ROYTEC ROAD, WOODBRIDGE, ON, L4L 8A9  
TEL: (905) 856-0133, FAX: (905) 856-9654  
[www.durock.com](http://www.durock.com)

ARCHITECTURAL FINISHING SYSTEMS

This detail complements the corresponding system specification and illustrates the system configuration for the depicted construction. Visit [www.durock.com](http://www.durock.com) for the latest revisions and contact DuRock for project-specific details to suit conditions other than those depicted. DuRock assumes no liability for the architecture, design, engineering, or workmanship of any project.

PUCCS (LRRC)

Last revise: Jul 2020

Issued: Mar 2006

COVER