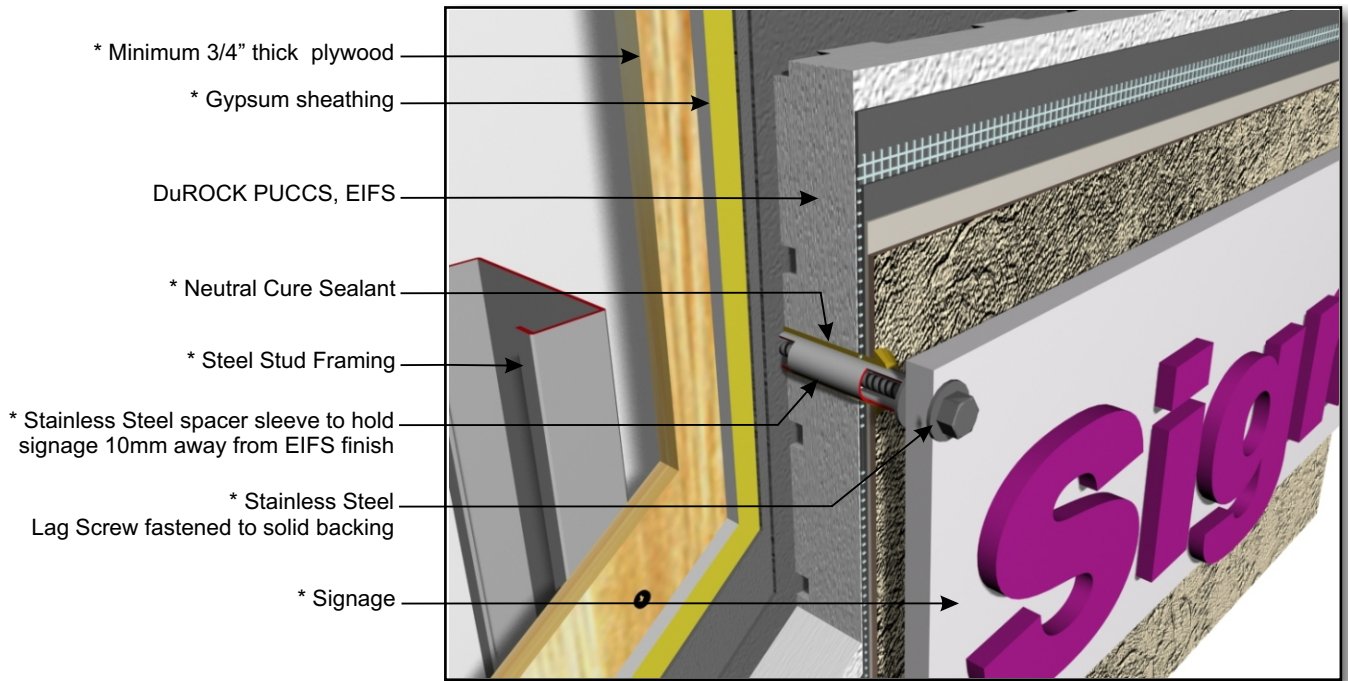


DuROCK PUCCS EIFS

Exterior Insulation Finish System for Commercial and High Rise Construction

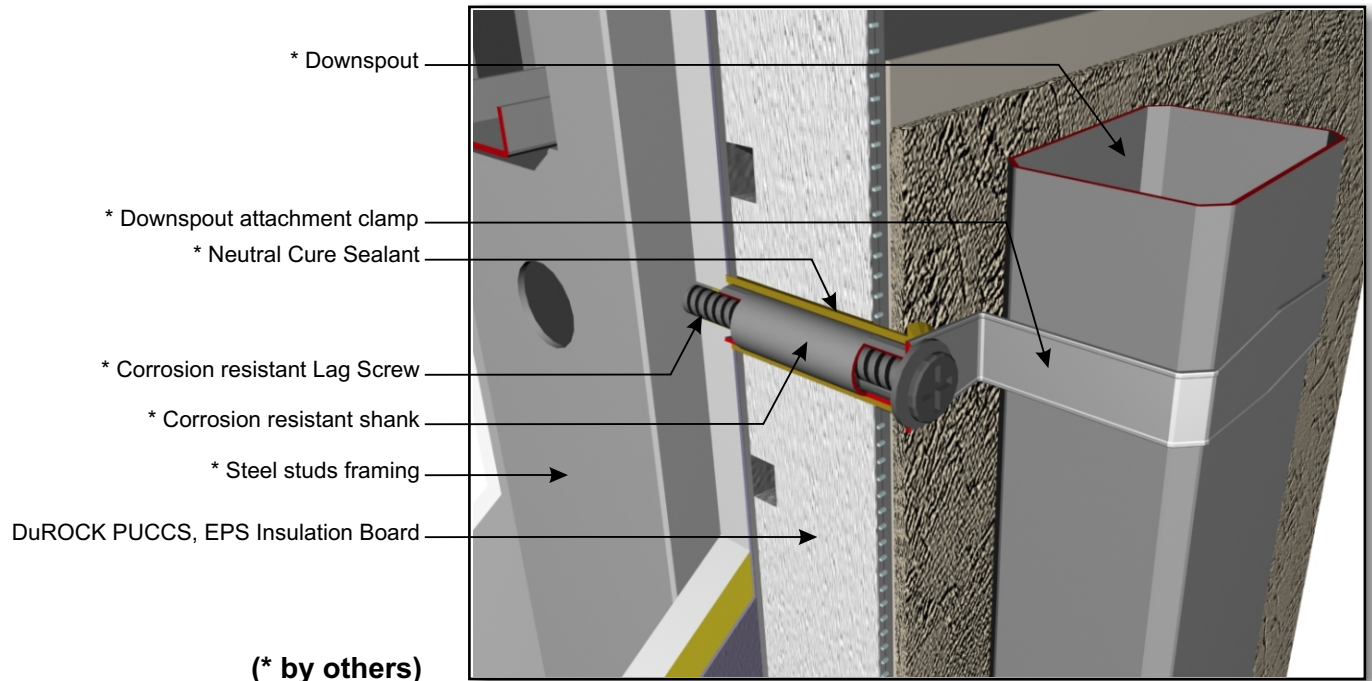


DuROCK
 ARCHITECTURAL FINISHING SYSTEMS



- * Minimum 3/4" thick plywood
- * Gypsum sheathing
- DuROCK PUCCS, EIFS
- * Neutral Cure Sealant
- * Steel Stud Framing
- * Stainless Steel spacer sleeve to hold signage 10mm away from EIFS finish
- * Stainless Steel Lag Screw fastened to solid backing
- * Signage

CHRC D14, SIGNAGE ATTACHMENT



- * Downspout
- * Downspout attachment clamp
- * Neutral Cure Sealant
- * Corrosion resistant Lag Screw
- * Corrosion resistant shank
- * Steel studs framing
- DuROCK PUCCS, EPS Insulation Board

(* by others)

CHRC D14-A, DOWN SPOUT ATTACHMENT