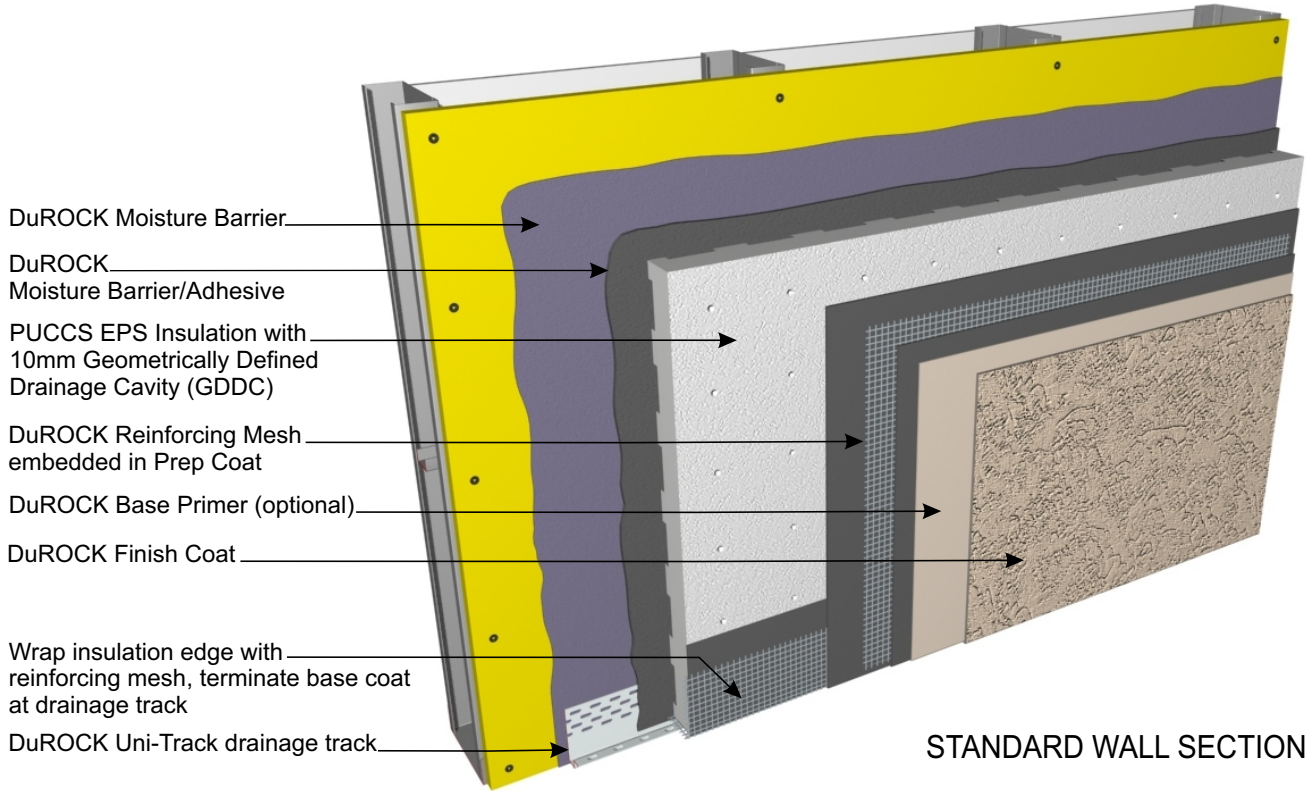


DuROCK PUCCS EIFS

Exterior Insulation Finish System for Commercial and High Rise Construction



DuROCK
 ARCHITECTURAL FINISHING SYSTEMS



STANDARD WALL SECTION

PUCCS is continuous insulation cladding that includes a Geometrically Defined Drainage Cavity (GDDC) that is 10 mm deep and 37% open. PUCCS has been evaluated by CCMC for compliance with the National Building Code of Canada, PUCCS complies with the CAN/ULC-S716.1 EIFS Materials and Systems test standard, and PUCCS satisfies the fire protection test requirements in National Building Code of Canada Article 3.1.5.5 when tested in accordance with CAN/ULC-S134 and in Article 3.2.3.8 when tested in accordance with CAN/ULC-S101

For clarity of illustration all details depict Roller Bear as the first coat moisture barrier and Cement Bear as the second coat moisture barrier. Please refer to the following page for alternative moisture barrier combinations.

Moisture drainage through 10mm Geometrically Defined Drainage Cavity (GDDC)

