

\* Existing Brick wall substrate

DuROCK Moisture Barrier

DuROCK Moisture Barrier/Adhesive

DuROCK PUCCS, EPS Insulation Board

DuROCK Reinforcing Mesh embedded in DuROCK Prep Coat

\* Concrete Slab

Wrap insulation edge with reinforcing mesh, terminate base coat at drainage track

DuROCK PVC Uni-Flash self-flashing drainage track

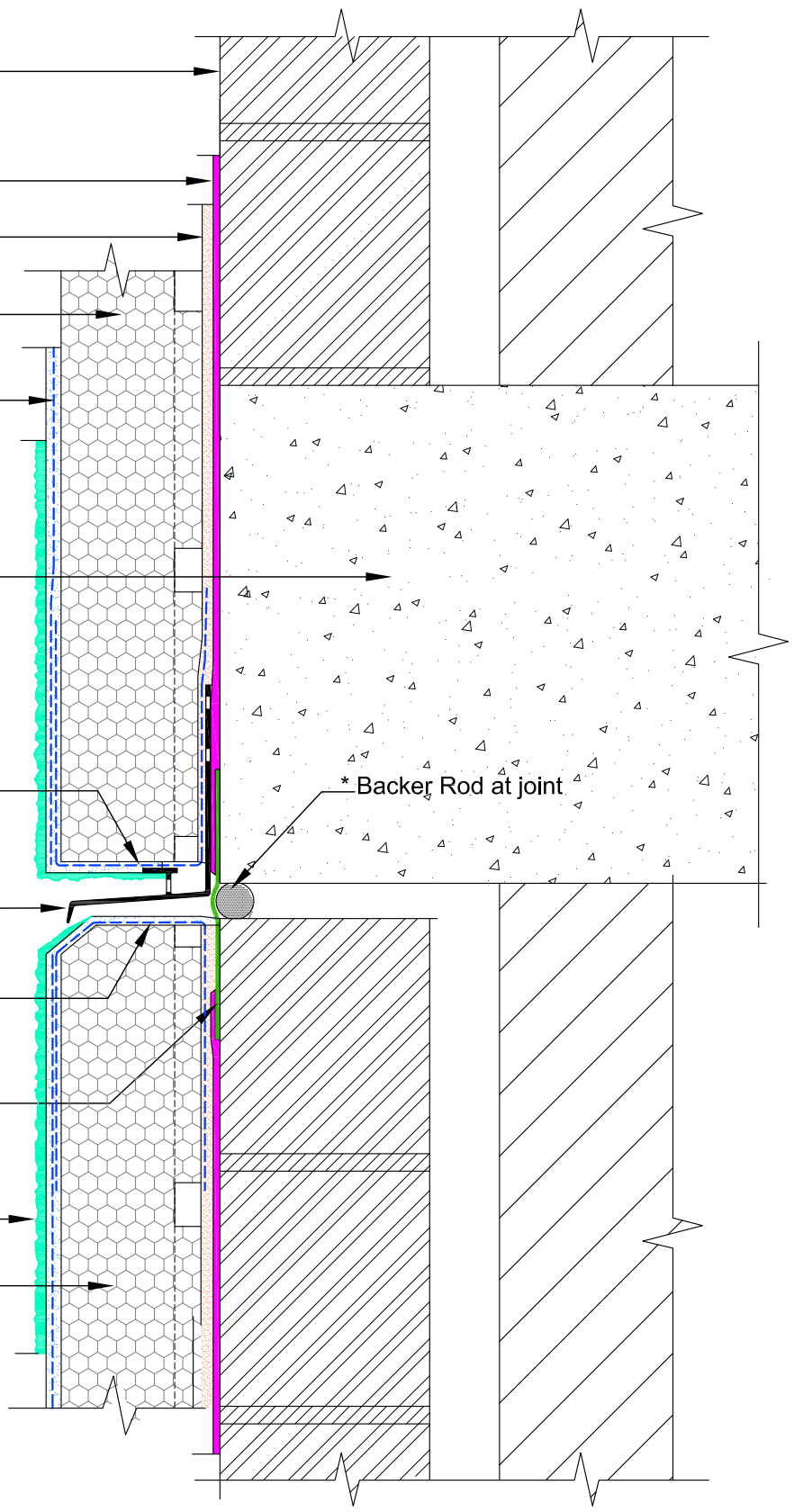
Wrap insulation edge with mesh-reinforced base coat

\* Self-Adhering Transition Membrane

DuROCK Finish Coat

DuROCK PUCCS Insulation with 10mm Geometrically Defined Drainage Cavity (GDDC)

\* Backer Rod at joint



(\* by others)

DuROCK SYSTEM:  
**DuROCK PUCCS for Existing Brick Building**

---

DRAWING TITLE:  
**HORIZONTAL EXPANSION JOINT  
 (DRAINED OPTION)**

This detail complements the corresponding system specification and illustrates the system configuration for the depicted construction. Visit [www.durock.com](http://www.durock.com) for the latest revisions and contact DuROCK for project-specific details to suit conditions other than those depicted. DuROCK assumes no liability for the architecture, design, engineering, or workmanship of any project.

**DuROCK**  
 Alfacing International Limited  
 101-B ROYTEC ROAD  
 WOODBRIDGE, ONTARIO  
 TEL : (905) 856-0133, FAX : (905) 856-9654  
[www.durock.com](http://www.durock.com)  
 ARCHITECTURAL FINISHING SYSTEMS

LAST REVISION:	MAY 2021
ISSUED:	OCT 2019
DRAWN:	RIZ
SCALE:	NTS
<b>PUCCS-EBB</b>	
<b>D-05</b>	