

Existing brick (by others)

\*DuROCK One-Step Ready-Mix may be required to fill mortar joints or to fill in unevenness in the surface of the brick

DuROCK Moisture Barrier

DuROCK Moisture Barrier/Adhesive

DuROCK PUCCS Insulation with 10mm GDDC

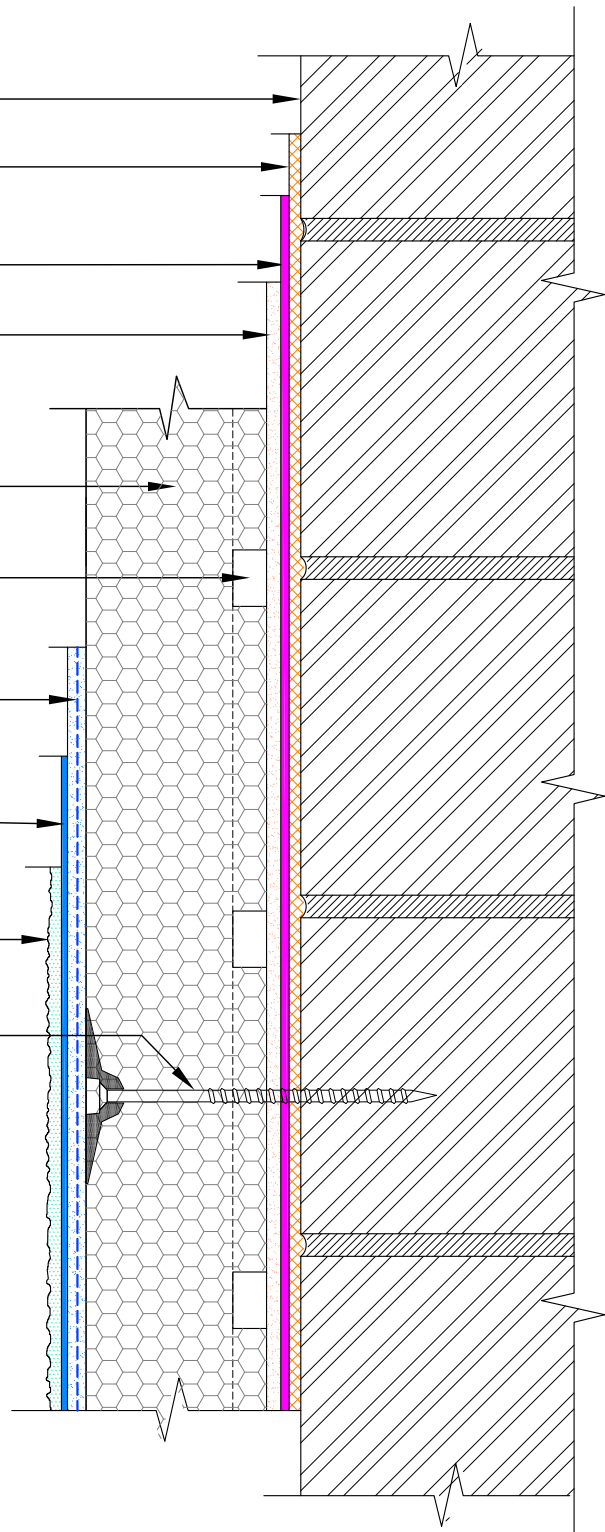
Geometrically Defined Drainage Cavity (GDDC) at the back of insulation board

DuROCK 5oz. Reinforcing Fibre Mesh embedded in Prep Coat

DuROCK Base Primer

DuROCK Finish Coat

\*DuROCK mechanical fasteners may be required to supplement the adhesive over painted or coated brick



**In accordance with EIFS standards, substrates are to be free of paint, etc. and substrates are to be true in all directions to within 6 mm over 2400 mm (0.25 in over 100 in). Substrates not in compliance with the EIFS standards are to be assessed by a qualified professional in consultation with DuRock.**

DuROCK SYSTEM:

**DuROCK PUCCS for Existing Brick Building**

DRAWING TITLE:

**STANDARD SECTION DETAIL**

This detail complements the corresponding system specification and illustrates the system configuration for the depicted construction. Visit [www.durock.com](http://www.durock.com) for the latest revisions and contact DuROCK for project-specific details to suit conditions other than those depicted. DuROCK assumes no liability for the architecture, design, engineering, or workmanship of any project.

**DuROCK**

Alfacing International Limited

101-B ROYTEC ROAD  
WOODBRIDGE, ONTARIO  
TEL : (905) 856-0133, FAX : (905) 856-9654  
[www.durock.com](http://www.durock.com)

ARCHITECTURAL FINISHING SYSTEMS

LAST REVISE: MAY 2021

ISSUED: OCT 2019

DRAWN: RIZ

SCALE: NTS

PUCCS-EBB  
**COVER**