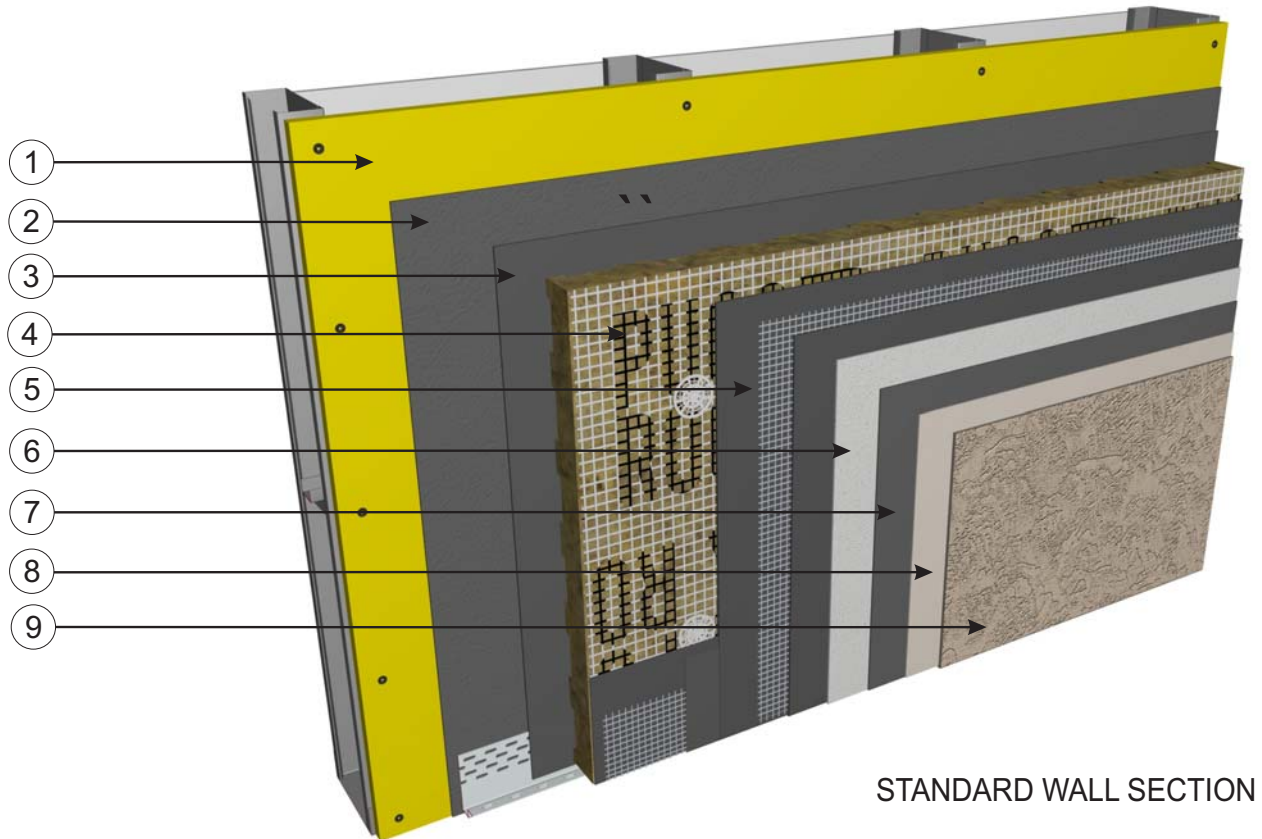


**PUCCS NC Non-Combustible EIFS Cladding
with PUC-ROCK GDDC Mineral Wool Insulation**

DuROCK
ARCHITECTURAL FINISHING SYSTEMS

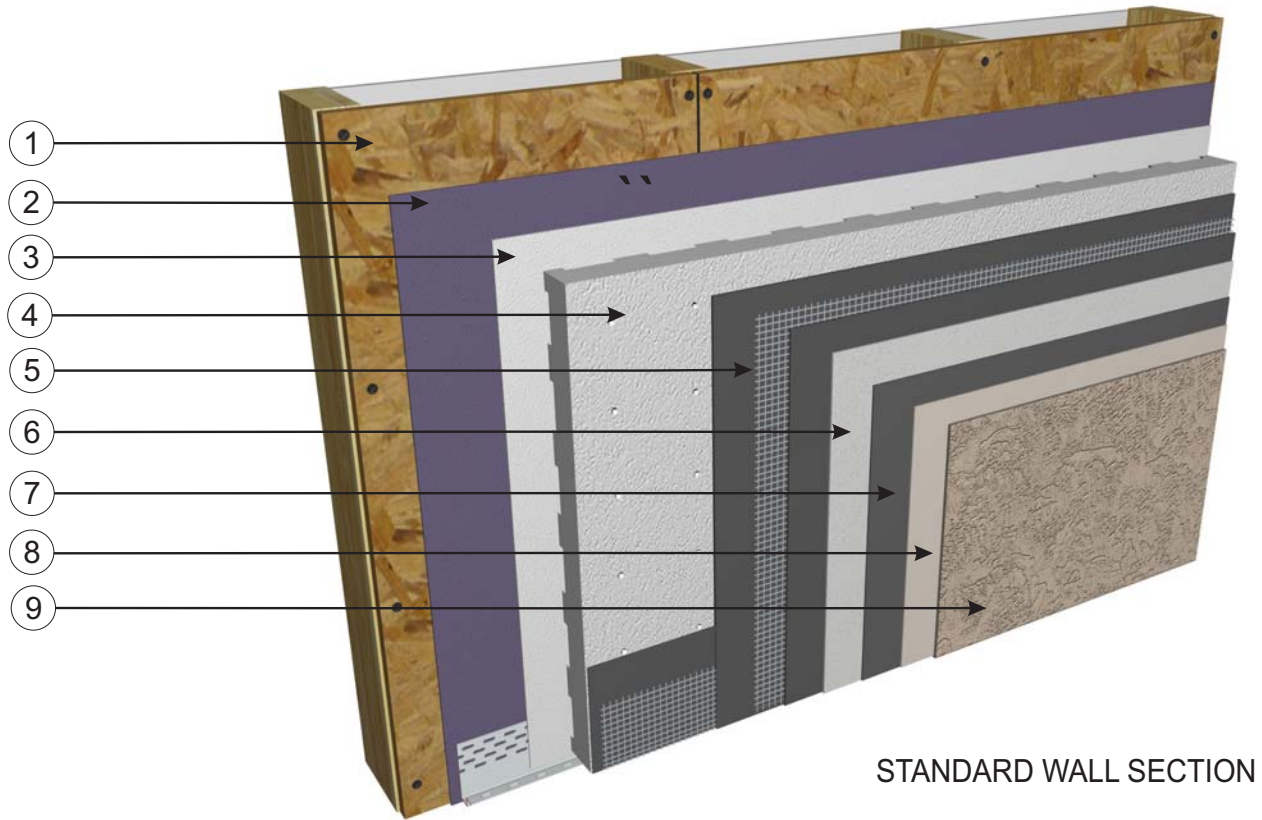
WOODPECKER-RESISTANT PUCCS-NC



STANDARD WALL SECTION

- ① SUBSTRATE (BY OTHERS)
- ② DuROCK MOISTURE BARRIER
- ③ DuROCK MOISTURE BARRIER/ADHESIVE
- ④ DuROCK PUC-ROCK Mineral Wool Insulation Board with Integral Reinforcing Mesh
- ⑤ DuROCK 50Z. REINFORCING MESH EMBEDDED IN DUROCK **PREP COAT** BASE COAT
- ⑥ DuROCK FIBRECOAT WOODPECKER RESISTANT COATING
- ⑦ DuROCK PREP COAT BASE COAT
- ⑧ DuROCK BASE PRIMER
- ⑨ DuROCK FINISH COAT

WOODPECKER-RESISTANT PUCCS



STANDARD WALL SECTION

- ① WOOD SHEATHING
- ② DuROCK MOISTURE BARRIER
- ③ DuROCK MOISTURE BARRIER/ADHESIVE
- ④ DuROCK PUCS EPS INSULATION BOARD
- ⑤ DuROCK 50Z. REINFORCING MESH EMBEDDED IN DUROCK **PREP COAT** BASE COAT
- ⑥ DuROCK FIBRECOAT WOODPECKER RESISTANT COATING
- ⑦ DuROCK PREP COAT BASE COAT
- ⑧ DuROCK BASE PRIMER (OPTIONAL)
- ⑨ DuROCK FINISH COAT



Alfacing International Limited
101 B.ROYTEC ROAD, WOODBRIDGE, ON, L4L 8A9
TEL: (905) 856-0133, FAX: (905) 856-9654
www.durock.com

ARCHITECTURAL FINISHING SYSTEMS

This detail complements the corresponding system specification and illustrates the system configuration for the depicted construction. Visit www.durock.com for the latest revisions and contact DuROCK for project-specific details to suit conditions other than those depicted. DuRock assumes no liability for the architecture, design, engineering, or workmanship of any project.

PUCCS-CHRC

Last revise:

Issued: FEB 2023

COVER