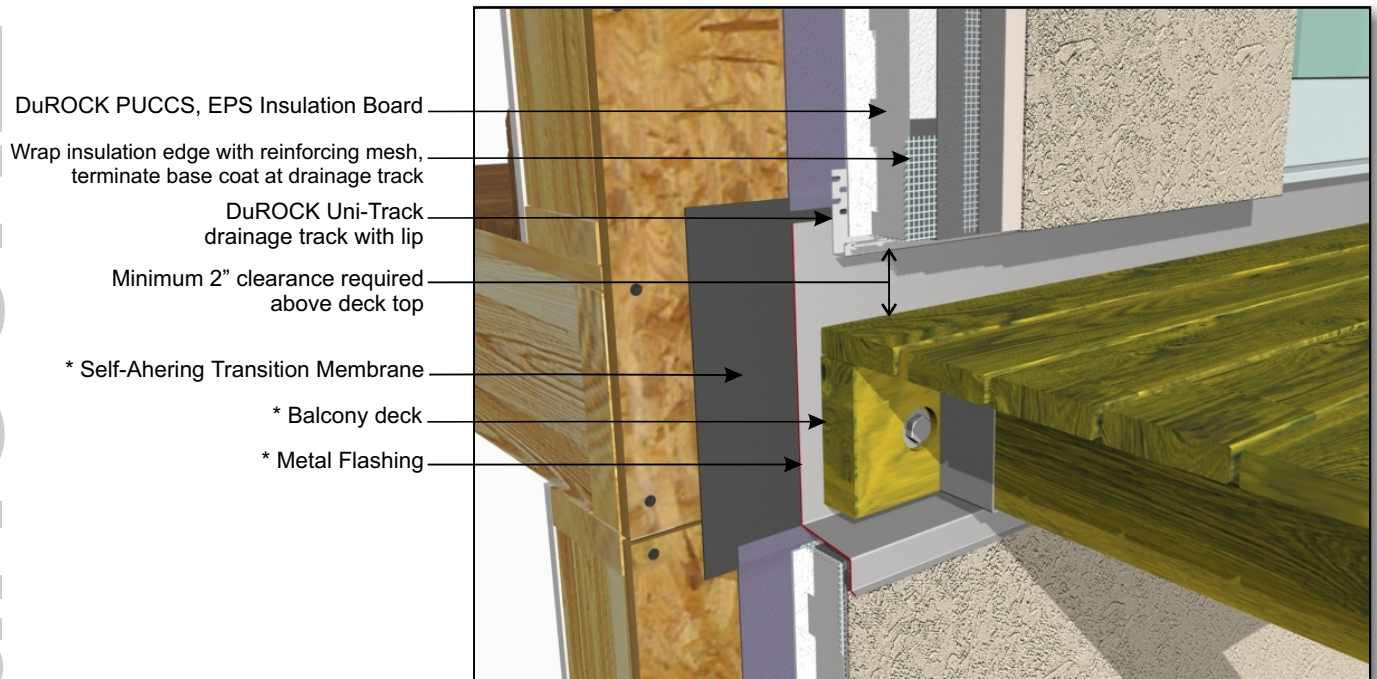


# DuROCK PUCCS EIFS

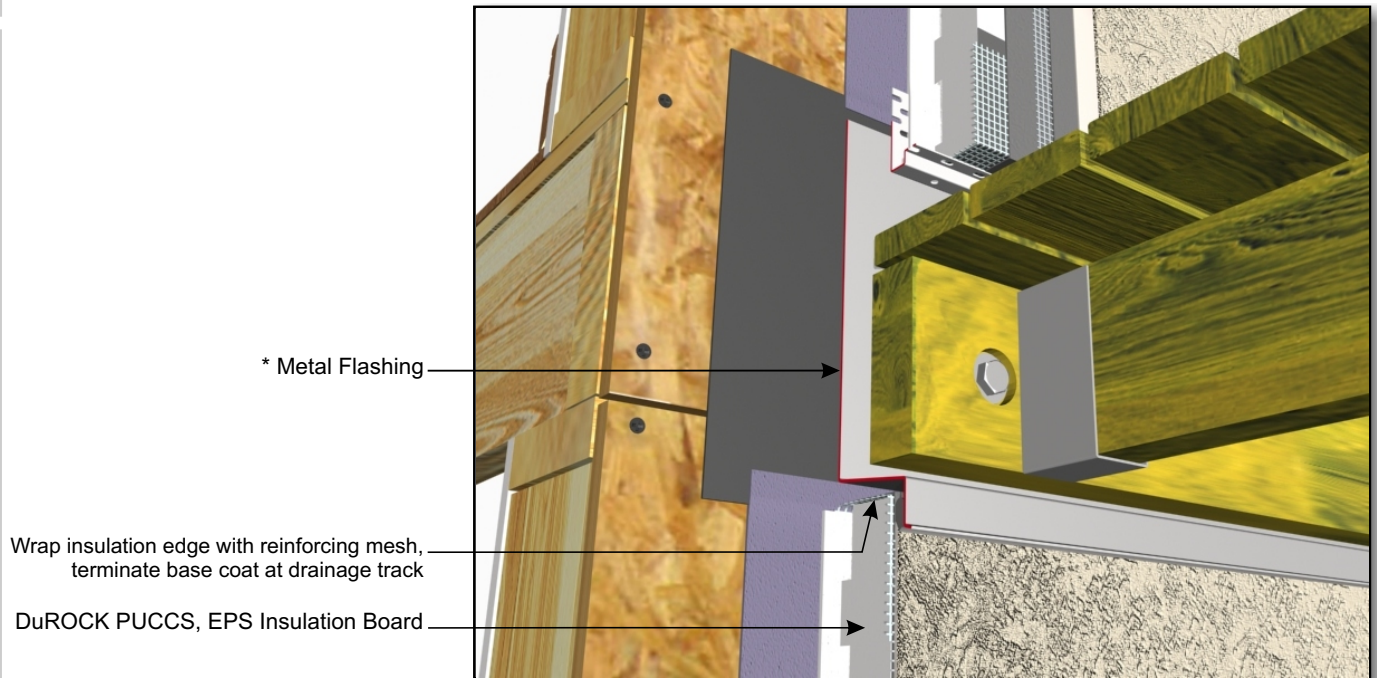
## Exterior Insulation Finish System for Low Rise Residential Construction

**DuROCK**  
 ARCHITECTURAL FINISHING SYSTEMS



- DuROCK PUCCS, EPS Insulation Board
- Wrap insulation edge with reinforcing mesh, terminate base coat at drainage track
- DuROCK Uni-Track drainage track with lip
- Minimum 2" clearance required above deck top
- \* Self-Ahering Transition Membrane
- \* Balcony deck
- \* Metal Flashing

**PUCCS-LRRC (09)**  
TERMINATION AT BALCONY/DECK (VIEW A)



- \* Metal Flashing
- Wrap insulation edge with reinforcing mesh, terminate base coat at drainage track
- DuROCK PUCCS, EPS Insulation Board

**PUCCS-LRRC (09A)**  
TERMINATION AT BALCONY/DECK (VIEW B)