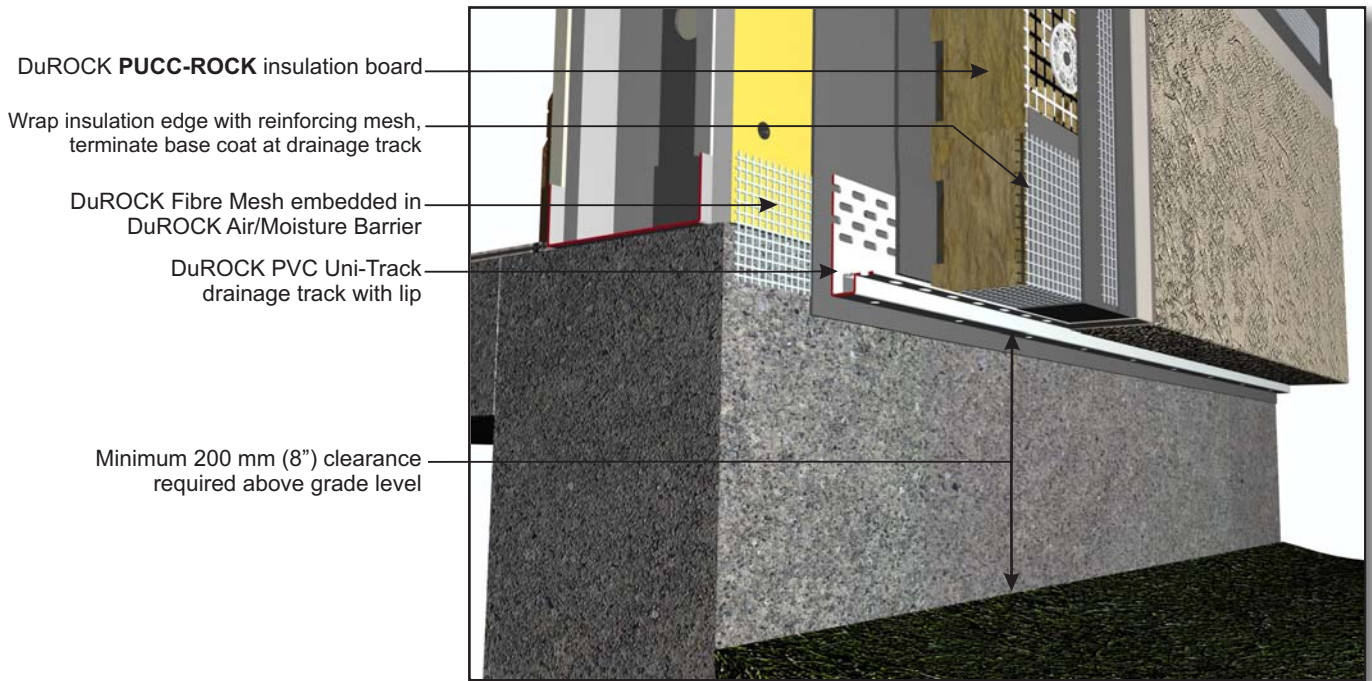


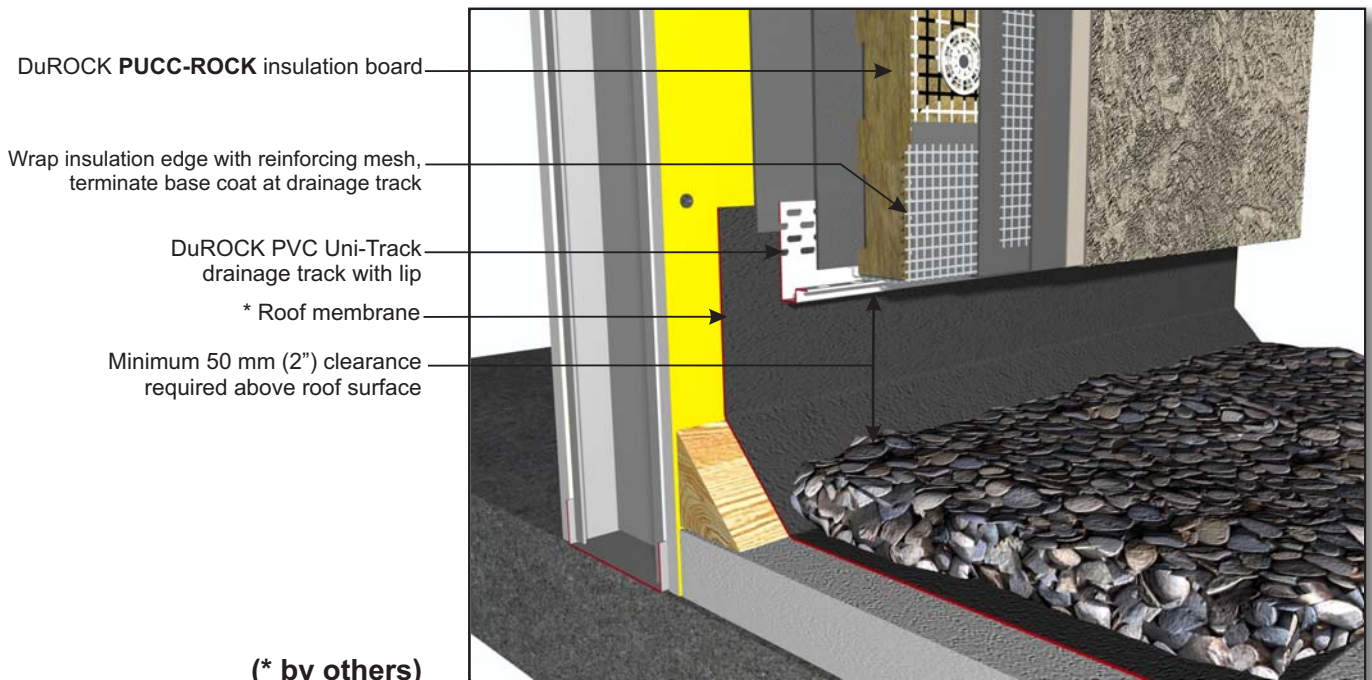
**PUCCS NC Non-Combustible EIFS Cladding
 with PUCC-ROCK GDDC Mineral Wool Insulation**

DuROCK
ARCHITECTURAL FINISHING SYSTEMS



- DuROCK **PUCC-ROCK** insulation board
- Wrap insulation edge with reinforcing mesh, terminate base coat at drainage track
- DuROCK Fibre Mesh embedded in DuROCK Air/Moisture Barrier
- DuROCK PVC Uni-Track drainage track with lip
- Minimum 200 mm (8") clearance required above grade level

D07, EIFS TERMINATION AT GRADE



- DuROCK **PUCC-ROCK** insulation board
- Wrap insulation edge with reinforcing mesh, terminate base coat at drainage track
- DuROCK PVC Uni-Track drainage track with lip
- * Roof membrane
- Minimum 50 mm (2") clearance required above roof surface

(* by others)

D08, EIFS TERMINATION AT FLAT ROOF

(* by others)