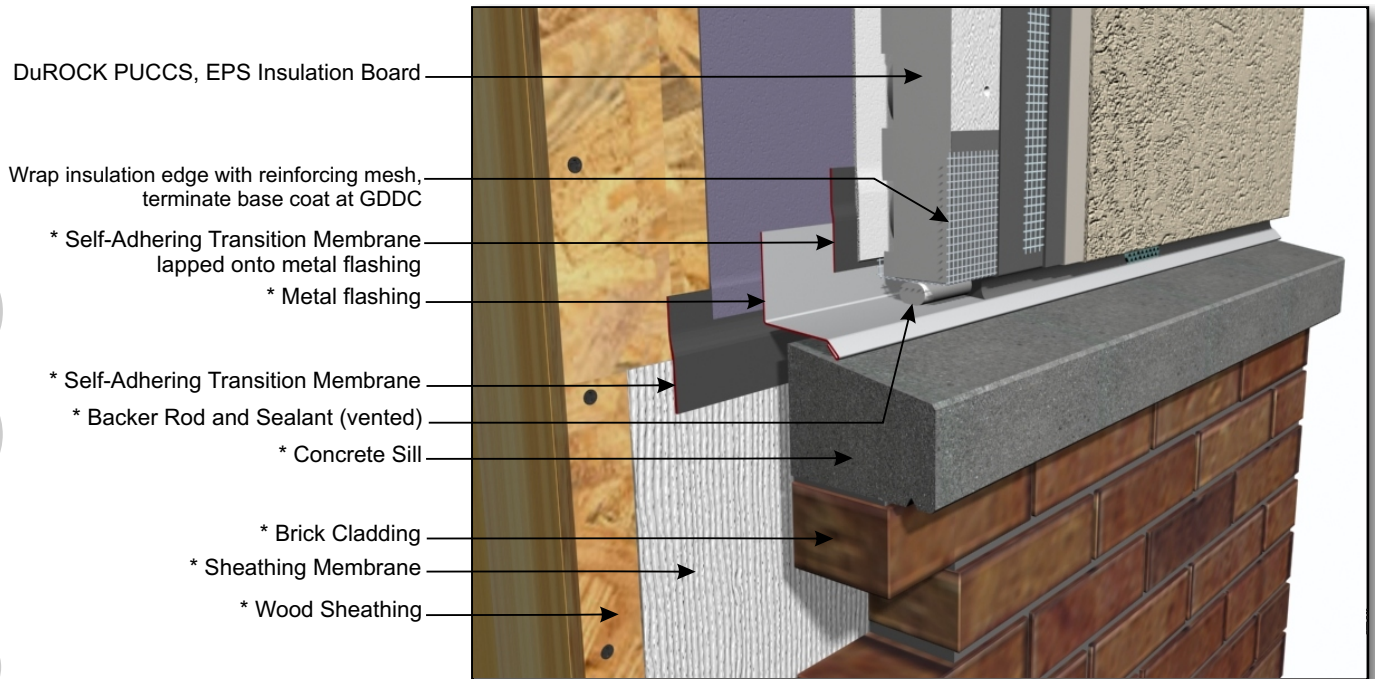


# DuROCK PUCCS EIFS

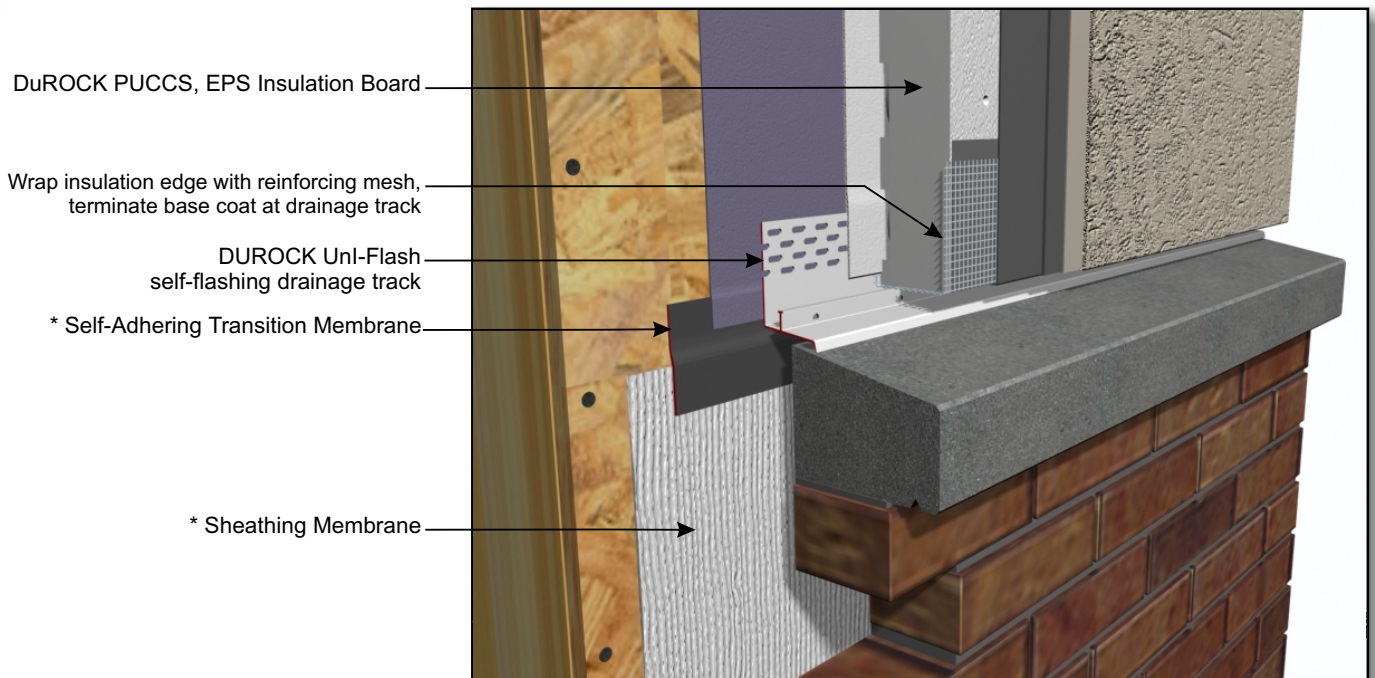
## Exterior Insulation Finish System for Low Rise and Residential Construction

**DuROCK**  
 ARCHITECTURAL FINISHING SYSTEMS



- DuROCK PUCCS, EPS Insulation Board
- Wrap insulation edge with reinforcing mesh, terminate base coat at GDDC
- \* Self-Adhering Transition Membrane lapped onto metal flashing
- \* Metal flashing
- \* Self-Adhering Transition Membrane
- \* Backer Rod and Sealant (vented)
- \* Concrete Sill
- \* Brick Cladding
- \* Sheathing Membrane
- \* Wood Sheathing

**PUCCS-LRRC (08A)**  
TERMINATION AT CONCRETE SILL WITH METAL FLASHING



- DuROCK PUCCS, EPS Insulation Board
- Wrap insulation edge with reinforcing mesh, terminate base coat at drainage track
- DUROCK Uni-Flash self-flashing drainage track
- \* Self-Adhering Transition Membrane
- \* Sheathing Membrane

(\* by others)

**PUCCS-LRRC (08B)**  
TERMINATION AT CONCRETE SILL WITH DuROCK UNI-FLASHING