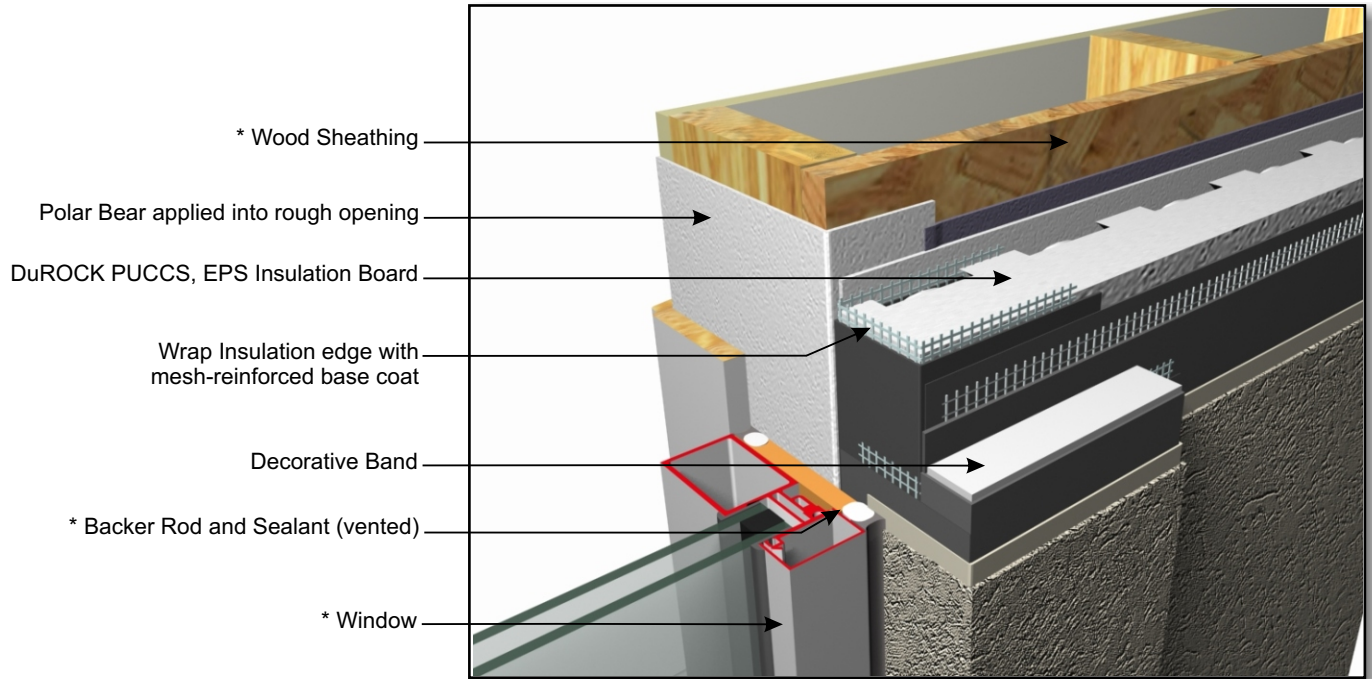


# DuROCK PUCCS EIFS

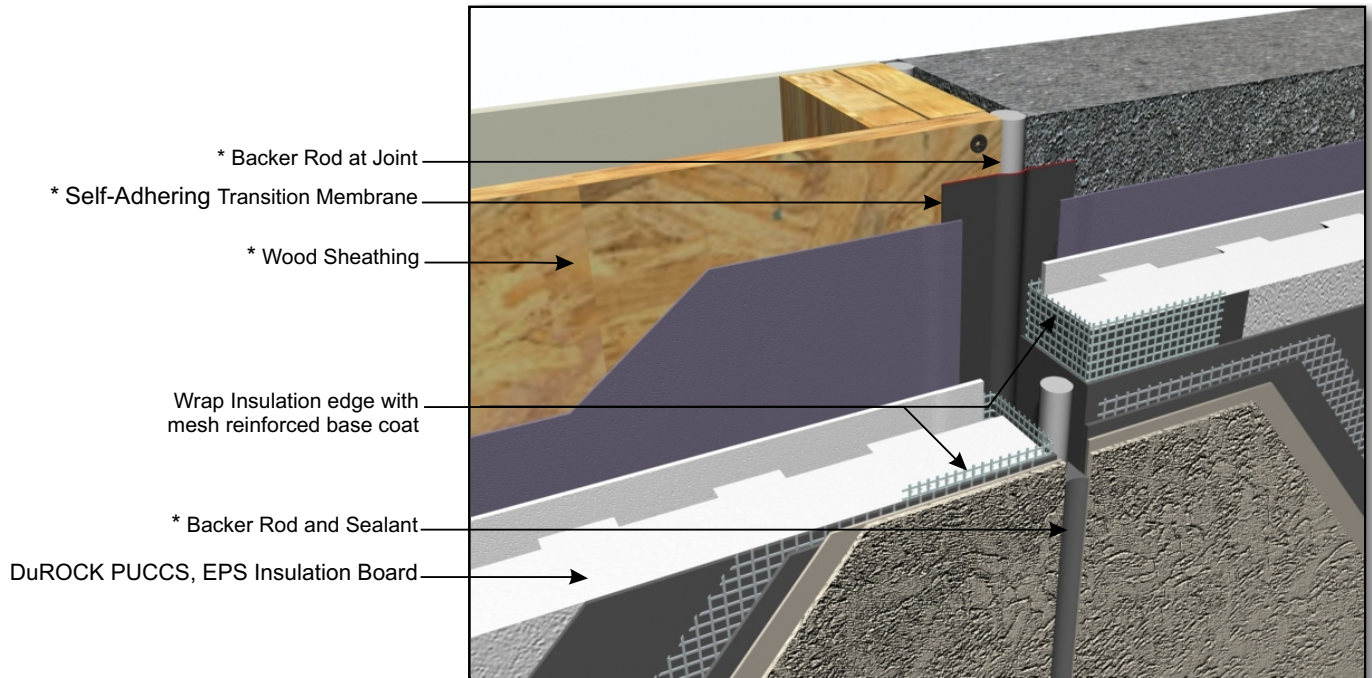
## Exterior Insulation Finish System for Low Rise and Residential Construction

DuROCK  
 ARCHITECTURAL FINISHING SYSTEMS



- \* Wood Sheathing
- Polar Bear applied into rough opening
- DuROCK PUCCS, EPS Insulation Board
- Wrap Insulation edge with mesh-reinforced base coat
- Decorative Band
- \* Backer Rod and Sealant (vented)
- \* Window

**PUCCS-LRRC (03)**  
WINDOW JAMB DETAIL



- \* Backer Rod at Joint
- \* Self-Adhering Transition Membrane
- \* Wood Sheathing
- Wrap Insulation edge with mesh reinforced base coat
- \* Backer Rod and Sealant
- DuROCK PUCCS, EPS Insulation Board

(\* by others)

**PUCCS-LRRC (04)**  
VERTICAL EXPANSION JOINT, JUNCTION WITH CONCRETE WALL