

DuROCK PUCCS EIFS

Exterior Insulation Finish System for Low Rise and Residential Construction



CCMC No. 12969-R

DuROCK

DuROCK Polar Bear
joint treatment

DuROCK Roller Bear
Moisture Barrier

DuROCK Polar Bear
Moisture Barrier/Adhesive

PUCCS EPS Insulation with
10mm Geometrically Defined
Drainage Cavity (GDCC)

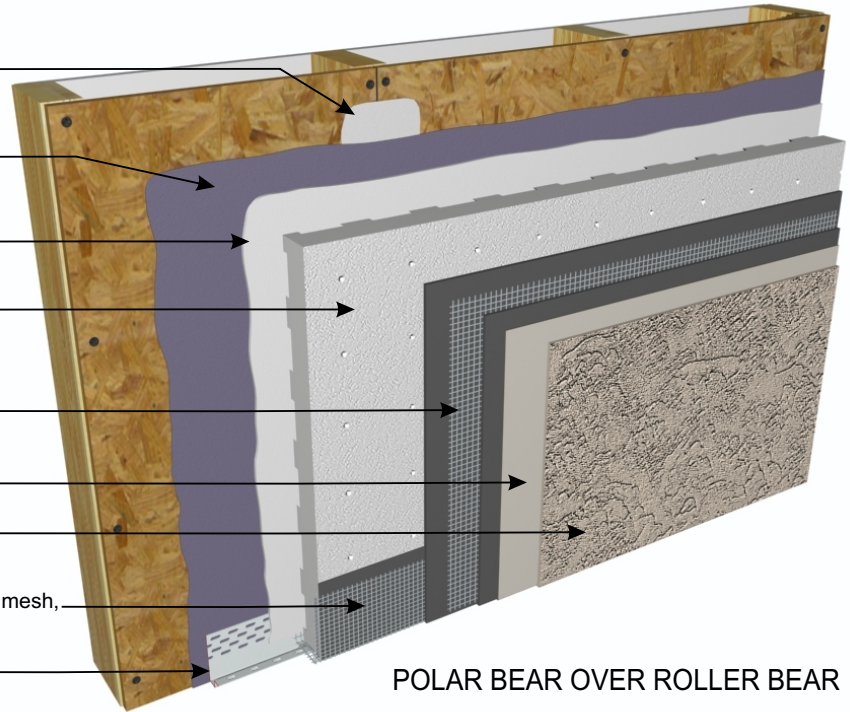
DuROCK Reinforcing Mesh
embedded in Prep Coat

DuROCK Base Primer (optional)

DuROCK Finish Coat

Wrap insulation edge with reinforcing mesh,
terminate base coat at drainage track

DuROCK Uni-Track
drainage track with lip

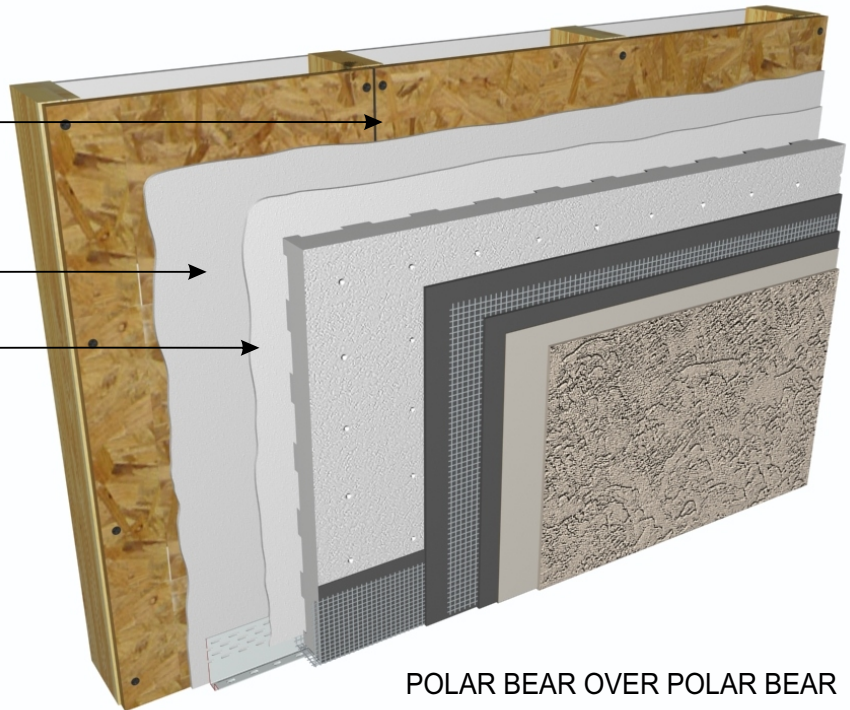


POLAR BEAR OVER ROLLER BEAR

No joint treatment required

DuROCK Polar Bear
Air/Moisture Barrier

DuROCK Polar Bear
Moisture Barrier/Adhesive



POLAR BEAR OVER POLAR BEAR

Note: For clarity of illustration
all details depict Roller Bear as
the first coat moisture barrier and
Polar Bear as the second coat
moisture barrier/adhesive.



Alfacing International Limited
101 B.ROYTEC ROAD, WOODBRIDGE, ON, L4L 8A9
TEL: (905) 856-0133, FAX: (905) 856-9654
www.durock.com

ARCHITECTURAL FINISHING SYSTEMS

This detail complements the corresponding system specification and illustrates the system configuration for the depicted construction. Visit www.durock.com for the latest revisions and contact DuRock for project-specific details to suit conditions other than those depicted. DuRock assumes no liability for the architecture, design, engineering, or workmanship of any project.

PUCCS (LRRC)

Last revise: Jul 2020

Issued: Mar 2006

COVER