

DuROCK PUCCS, EPS Insulation Board with 10mm (GDDC) Geometrically Defined Drainage Cavity

DuROCK Finish Coat

Wrap insulation edge with reinforcing mesh, terminate base coat at GDDC

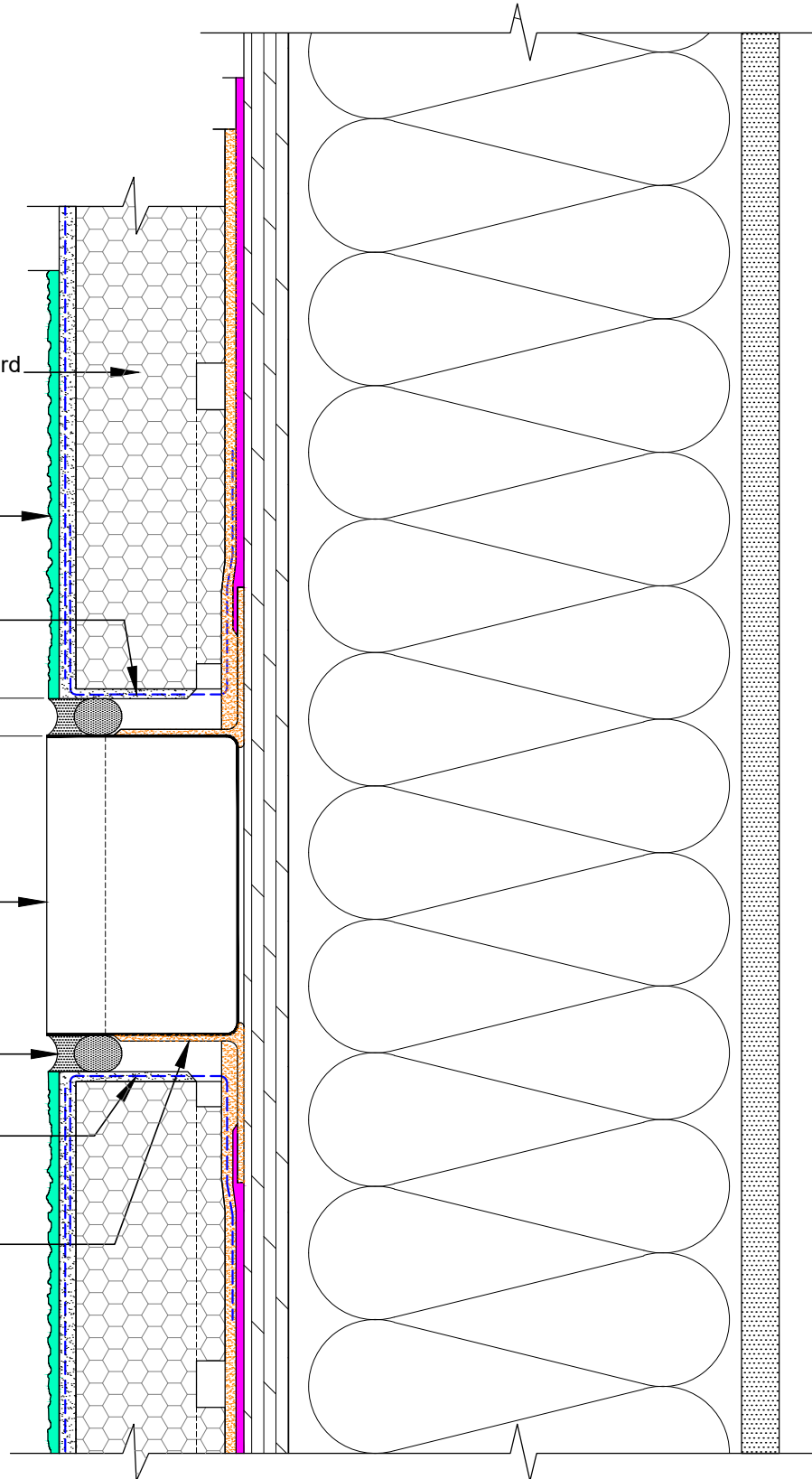
Provide approximate 15 mm space between electric box and insulation

Weather tight electric box (by others)

Backer Rod and Sealant (by others)

Wrap insulation edge with reinforcing mesh, terminate base coat at GDDC

DuROCK Polar Bear applied around electric box and onto sheathing



DuROCK SYSTEM:

PUCCS-LRRC

(FOR LOW-RISE AND RESIDENTIAL CONSTRUCTION)

DRAWING TITLE:

EXTERIOR ELECTRIC BOX PENETRATION

This detail complements the corresponding system specification and illustrates the system configuration for the depicted construction. Visit www.durock.com for the latest revisions and contact DuROCK for project-specific details to suit conditions other than those depicted. DuROCK assumes no liability for the architecture, design, engineering, or workmanship of any project.



Alfacing International Limited

101-B ROYTEC ROAD
WOODBRIDGE, ONTARIO
TEL : (905) 856-0133, FAX : (905) 856-9654
www.durock.com

ARCHITECTURAL FINISHING SYSTEMS

LAST REVISE: MAR 2024

ISSUED: MAR 2007

DRAWN: RIZ

SCALE: NTS

PUCCS-LLRC

D-11