

Wood Sheathing (by others)

DuROCK Roller Bear or Polar Bear Moisture Barrier

DuROCK Polar Bear Moisture Barrier/Adhesive

DuROCK PUCCS, EPS Insulation Board with 10mm (GDDC) Geometrically Defined Drainage Cavity

DuROCK Reinforcing Mesh embedded in DuROCK Prep Coat

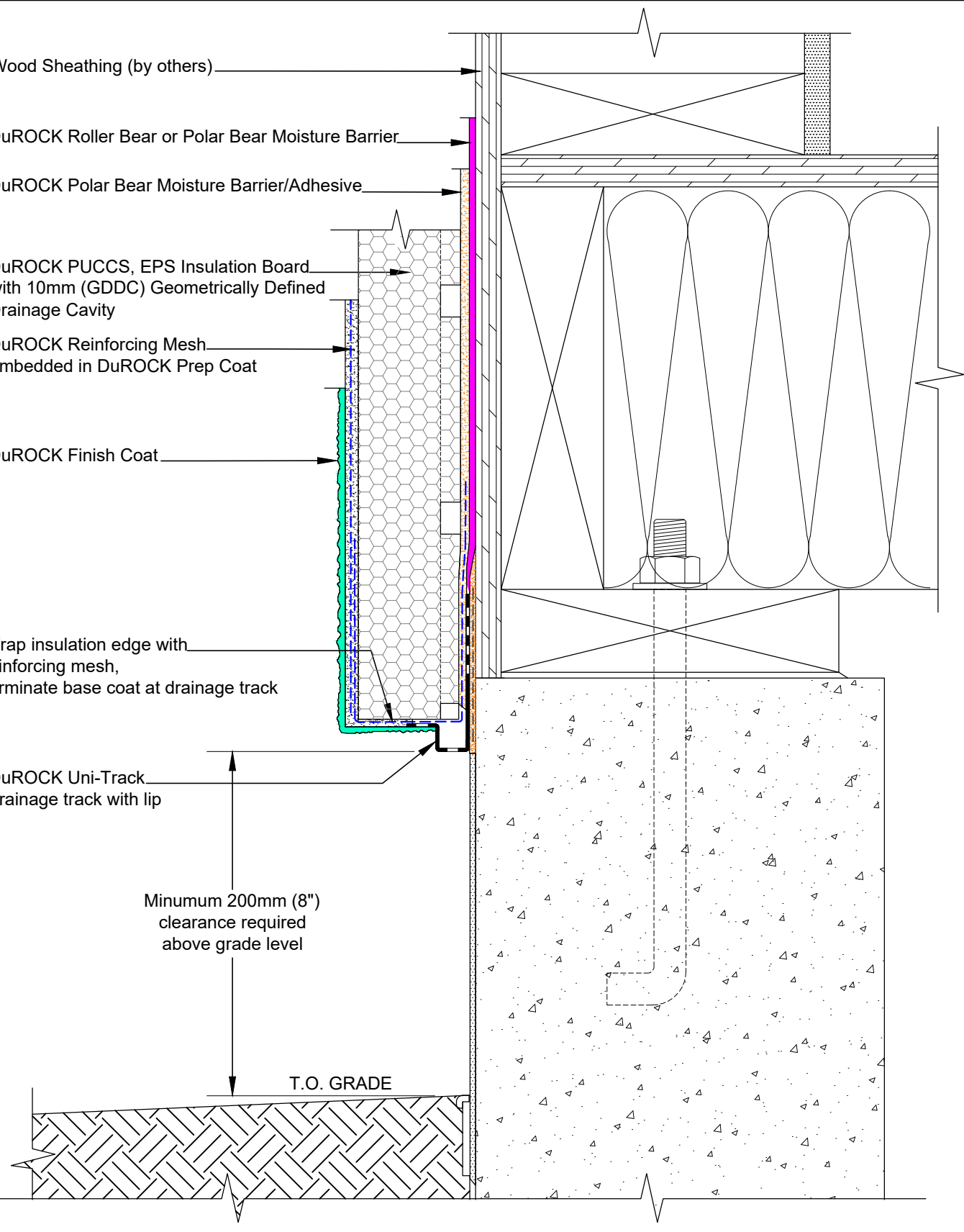
DuROCK Finish Coat

Wrap insulation edge with reinforcing mesh, terminate base coat at drainage track

DuROCK Uni-Track drainage track with lip

Minimum 200mm (8") clearance required above grade level

T.O. GRADE



DuROCK SYSTEM:  
**PUCCS-LRRC**  
 (FOR LOW-RISE AND RESIDENTIAL CONSTRUCTION)

DRAWING TITLE:  
**TERMINATION AT GRADE**

This detail complements the corresponding system specification and illustrates the system configuration for the depicted construction. Visit [www.durock.com](http://www.durock.com) for the latest revisions and contact DuROCK for project-specific details to suit conditions other than those depicted. DuROCK assumes no liability for the architecture, design, engineering, or workmanship of any project.

**DuROCK**  
 Alfacing International Limited  
 101-B ROYTEC ROAD  
 WOODBRIDGE, ONTARIO  
 TEL : (905) 856-0133, FAX : (905) 856-9654  
[www.durock.com](http://www.durock.com)  
 ARCHITECTURAL FINISHING SYSTEMS

LAST REVISE:	MAR 2024
ISSUED:	MAR 2007
DRAWN:	RIZ
SCALE:	NTS
<b>PUCCS-LLRC</b>	
<b>D-09</b>	