

Wood Sheathing (by others)

DuROCK Roller Bear or Polar Bear Moisture Barrier

DuROCK Polar Bear Air/Moisture Barrier/Adhesive

DuROCK PUCCS, EPS Insulation Board with 10mm (GDDC) Geometrically Defined Drainage Cavity

DuROCK Reinforcing Mesh embedded in DuROCK Prep Coat

DuROCK Finish Coat

Wrap insulation edge with reinforcing mesh, terminate base coat at GDDC

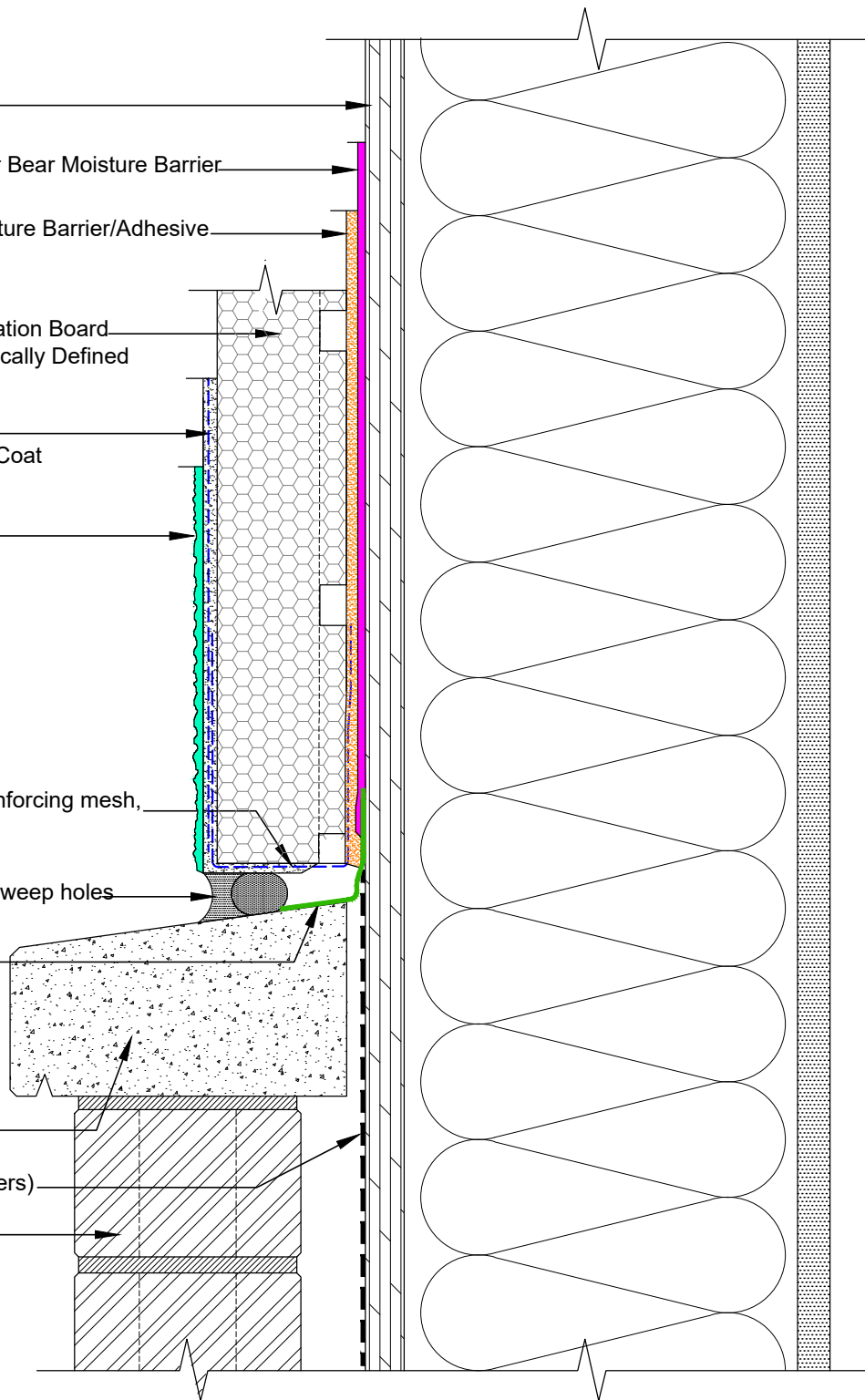
Backer Rod and Sealant with weep holes (by others)

Self-Adhering Transition Membrane lapped onto concrete sill (by others)

Concrete Sill (by others)

Sheathing Membrane (by others)

Drained and vented masonry veneer (by others)



DuROCK SYSTEM:

PUCCS-LRRC

(FOR LOW-RISE AND RESIDENTIAL CONSTRUCTION)

DRAWING TITLE:

TERMINATION AT CONCRETE SILL (OPTION 3) WITH MEMBRANE

This detail complements the corresponding system specification and illustrates the system configuration for the depicted construction. Visit www.durock.com for the latest revisions and contact DuROCK for project-specific details to suit conditions other than those depicted. DuROCK assumes no liability for the architecture, design, engineering, or workmanship of any project.



Alfacing International Limited

101-B ROYTEC ROAD
WOODBRIIDGE, ONTARIO
TEL : (905) 856-0133, FAX : (905) 856-9654
www.durock.com

ARCHITECTURAL FINISHING SYSTEMS

LAST REVISE: MAR 2024

ISSUED: MAR 2007

DRAWN: RIZ

SCALE: NTS

PUCCS-LLRC

D-08C