

Wood Sheathing (by others)

DuROCK Roller Bear or Polar Bear Moisture Barrier

DuROCK Polar Bear Air/Moisture Barrier/Adhesive

DuROCK PUCCS, EPS Insulation Board with 10mm (GDDC) Geometrically Defined Drainage Cavity

DuROCK Reinforcing Mesh embedded in DuROCK Prep Coat

DuROCK Finish Coat

Self-Adhering Transition Membrane lapped onto metal flashing (by others)

Wrap insulation edge with reinforcing mesh, terminate base coat at GDDC

Backer Rod and Sealant with weep holes (by others)

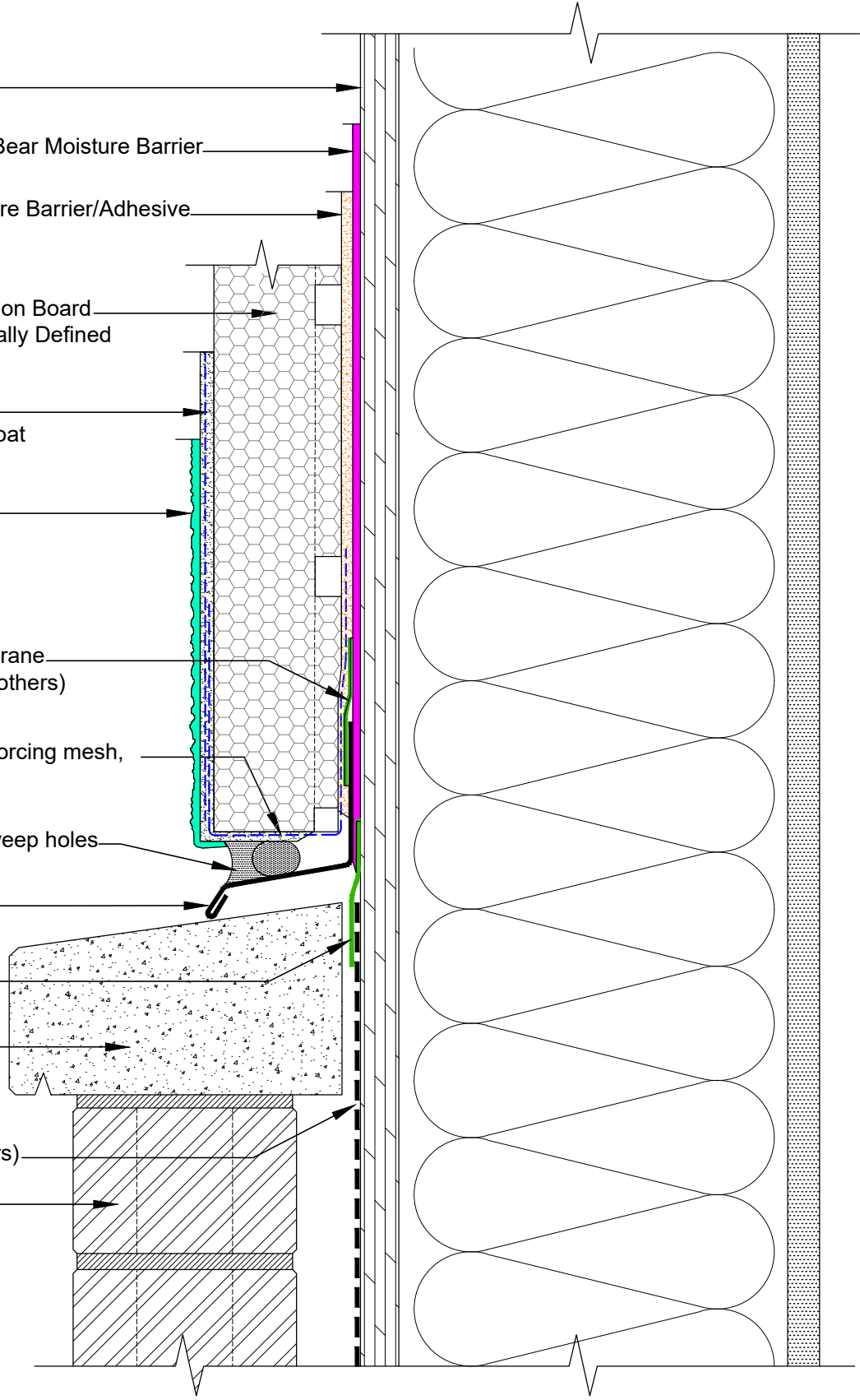
Metal Flashing (by others)

Self-Adhering Transition Membrane (by others)

Concrete Sill (by others)

Sheathing Membrane (by others)

Brick Cladding (by others)



DuROCK SYSTEM:

PUCCS-LRRC

(FOR LOW-RISE AND RESIDENTIAL CONSTRUCTION)

DRAWING TITLE:

TERMINATION AT CONCRETE SILL (OPTION 1) WITH METAL FLASHING

This detail complements the corresponding system specification and illustrates the system configuration for the depicted construction. Visit www.durock.com for the latest revisions and contact DuROCK for project-specific details to suit conditions other than those depicted. DuROCK assumes no liability for the architecture, design, engineering, or workmanship of any project.



Alfacing International Limited

101-B ROYTEC ROAD
WOODBIDGE, ONTARIO
TEL : (905) 856-0133, FAX : (905) 856-9654
www.durock.com

ARCHITECTURAL FINISHING SYSTEMS

LAST REVISE: MAR 2024

ISSUED: MAR 2007

DRAWN: RIZ

SCALE: NTS

PUCCS-LLRC
D-08A