

Window (by others)

DuROCK Polar Bear applied continuously inside the opening extending a minimum of 50mm (2") onto the sheathing

Backer Rod and Sealant with weep holes (by others)

Metal Flashing (by others)

Wrap insulation edge with mesh-reinforced base coat

Seal drainage cavity with base coat or adhesive

Decorative moulding (by others)

DuROCK Finish Coat

DuROCK Reinforcing Mesh embedded in DuROCK Prep Coat

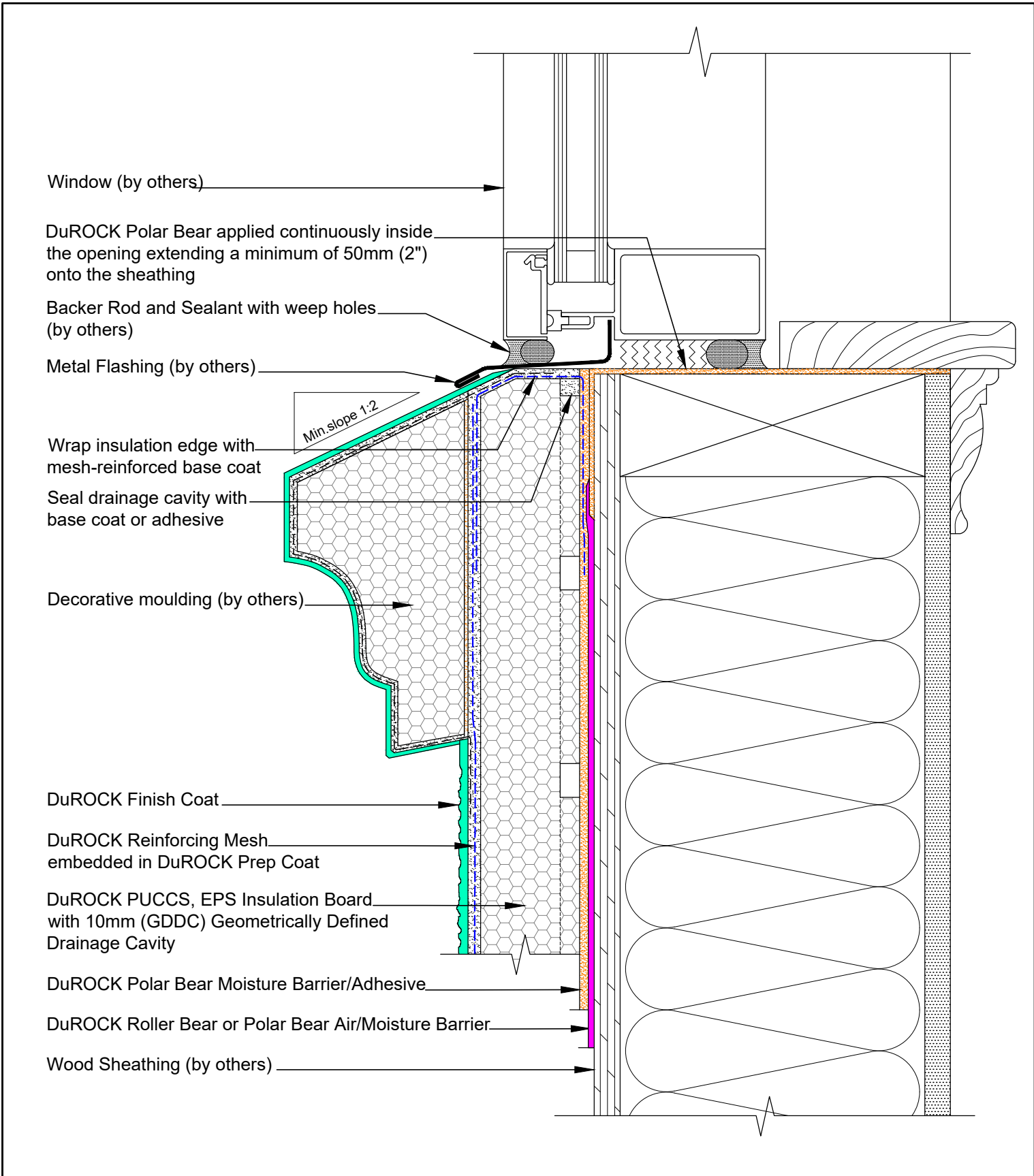
DuROCK PUCCS, EPS Insulation Board with 10mm (GDDC) Geometrically Defined Drainage Cavity

DuROCK Polar Bear Moisture Barrier/Adhesive

DuROCK Roller Bear or Polar Bear Air/Moisture Barrier

Wood Sheathing (by others)

Min. slope 1:2



DuROCK SYSTEM:

### PUCCS-LRRC

(FOR LOW-RISE AND RESIDENTIAL CONSTRUCTION)

DRAWING TITLE:

## WINDOW SILL WITH FLASHING

This detail complements the corresponding system specification and illustrates the system configuration for the depicted construction. Visit [www.durock.com](http://www.durock.com) for the latest revisions and contact DuROCK for project-specific details to suit conditions other than those depicted. DuROCK assumes no liability for the architecture, design, engineering, or workmanship of any project.



Alfacing International Limited

101-B ROYTEC ROAD  
WOODBIDGE, ONTARIO  
TEL : (905) 856-0133, FAX : (905) 856-9654  
[www.durock.com](http://www.durock.com)

ARCHITECTURAL FINISHING SYSTEMS

LAST REVISE: MAR 2024

ISSUED: MAR 2007

DRAWN: RIZ

SCALE: NTS

PUCCS-LLRC

# D-02B