

Window (by others)

Self-Adhering Membrane
or DuROCK Polar Bear

Backer Rod and Sealant (Vented)
(by others)

Wrap insulation edge with
mesh-reinforced base coat

Seal drainage cavity with
base coat or adhesive

DuROCK PUCCS, EPS Insulation Board
with 10mm (GDDC) Geometrically Defined
Drainage Cavity

DuROCK Finish Coat

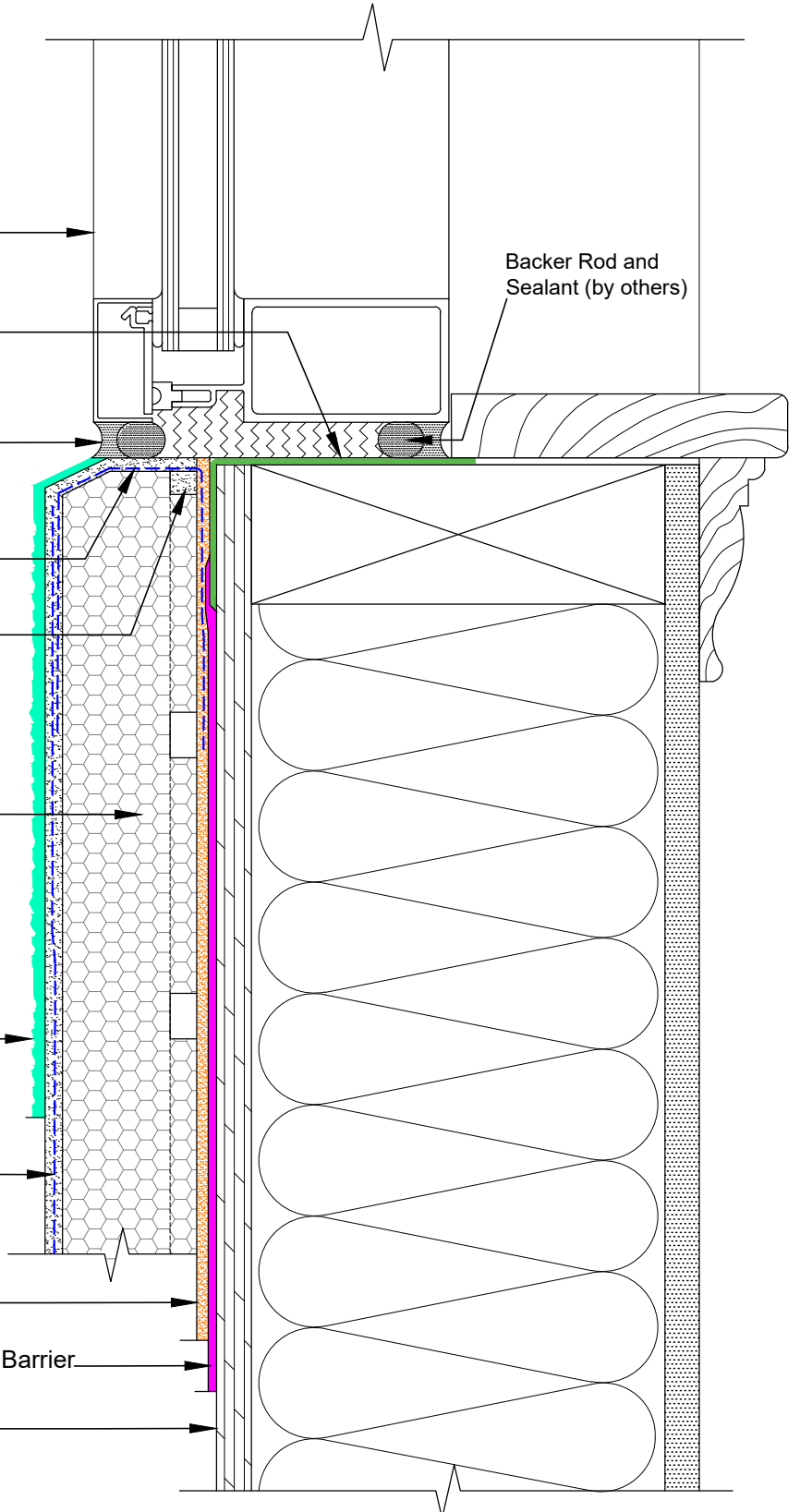
DuROCK Reinforcing Mesh
embedded in DuROCK Prep Coat

DuROCK Polar Bear Moisture Barrier/Adhesive

DuROCK Roller Bear or Polar Bear Air/Moisture Barrier

Wood Sheathing (by others)

Backer Rod and
Sealant (by others)



DuROCK SYSTEM:

PUCCS-LRRC

(FOR LOW-RISE AND RESIDENTIAL CONSTRUCTION)

DRAWING TITLE:

WINDOW SILL WITHOUT FLASHING

This detail complements the corresponding system specification and illustrates the system configuration for the depicted construction. Visit www.durock.com for the latest revisions and contact DuROCK for project-specific details to suit conditions other than those depicted. DuROCK assumes no liability for the architecture, design, engineering, or workmanship of any project.



Alfacing International Limited

101-B ROYTEC ROAD
WOODBIDGE, ONTARIO
TEL : (905) 856-0133, FAX : (905) 856-9654
www.durock.com

ARCHITECTURAL FINISHING SYSTEMS

LAST REVISE: JULY 2024

ISSUED: MAR 2007

DRAWN: RIZ

SCALE: NTS

PUCCS-LLRC

D-02A