

Wood Sheathing (by others)

DuROCK Roller Bear or Polar Bear Moisture Barrier

DuROCK Polar Bear Moisture Barrier/Adhesive

DuROCK Reinforcing Mesh
embedded in DuROCK Prep Coat

DuROCK Finish Coat

DuROCK PUCCS, EPS Insulation Board
with 10mm (GDDC) Geometrically Defined
Drainage Cavity

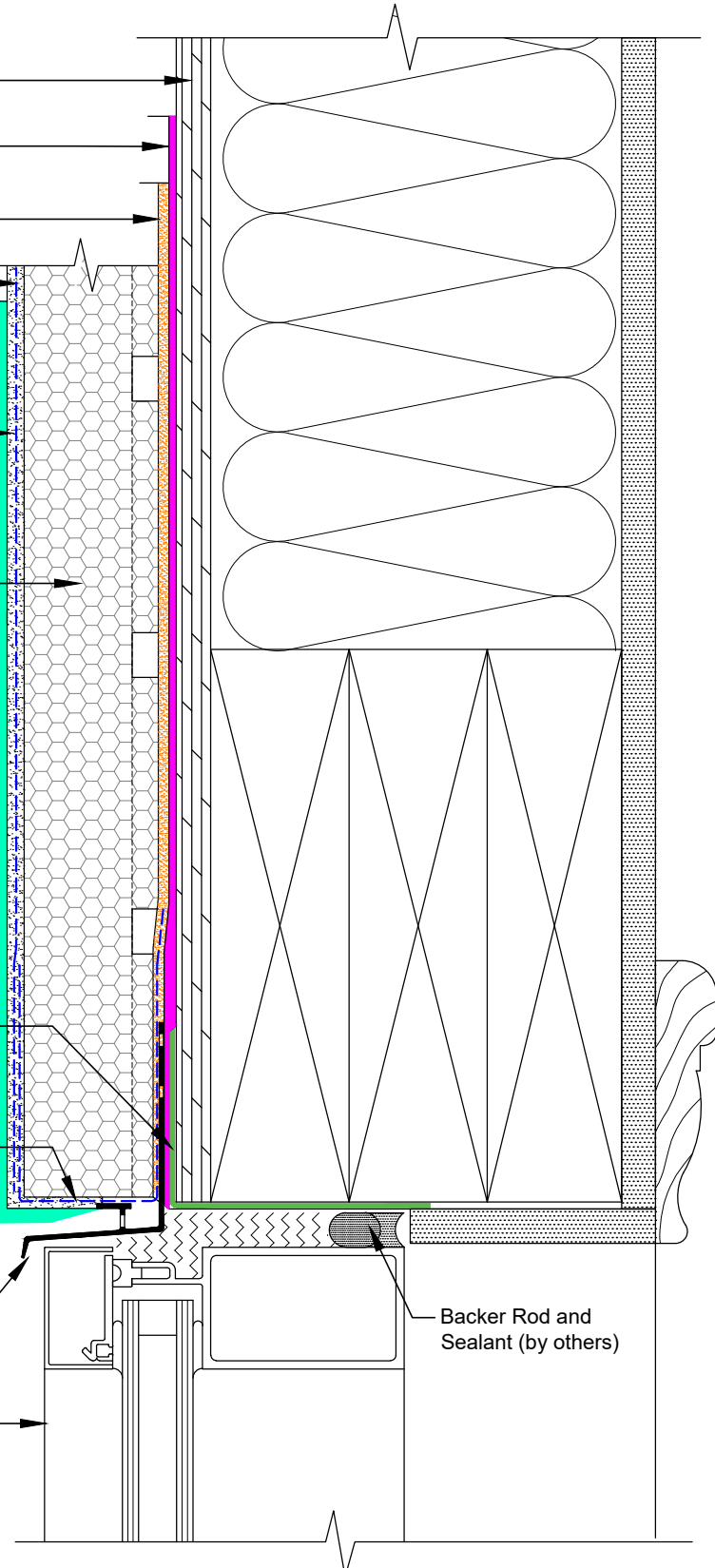
Self-Adhering Membrane
or DuROCK Polar Bear

Wrap insulation edge with
reinforcing mesh, terminate
base coat at drainage track

DuROCK Uni-Flash
self-flashing drainage track

Window (by others)

Backer Rod and
Sealant (by others)



DuROCK SYSTEM:

PUCCS-LRRC

(FOR LOW-RISE AND RESIDENTIAL CONSTRUCTION)

DRAWING TITLE:

WINDOW HEADER WITH DuROCK PVC UNI-FLASH

This detail complements the corresponding system specification and illustrates the system configuration for the depicted construction. Visit www.durock.com for the latest revisions and contact DuROCK for project-specific details to suit conditions other than those depicted. DuROCK assumes no liability for the architecture, design, engineering, or workmanship of any project.



Alfacing International Limited

101-B ROYTEC ROAD
WOODBRIDGE, ONTARIO
TEL : (905) 856-0133, FAX : (905) 856-9654
www.durock.com

ARCHITECTURAL FINISHING SYSTEMS

LAST REVISE: JULY 2024

ISSUED: MAR 2007

DRAWN: RIZ

SCALE: NTS

PUCCS-LLRC
D-01A