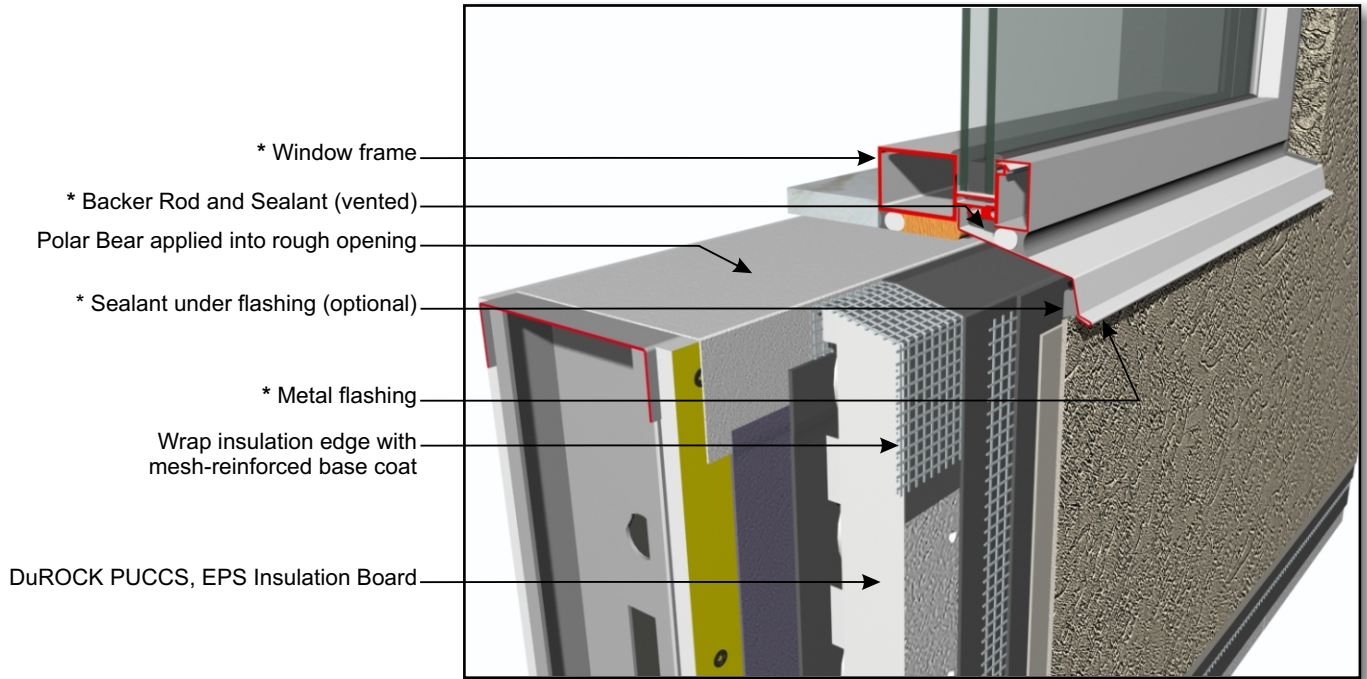


DuROCK PUCCS EIFS

Exterior Insulation Finish System for Commercial and High Rise Construction

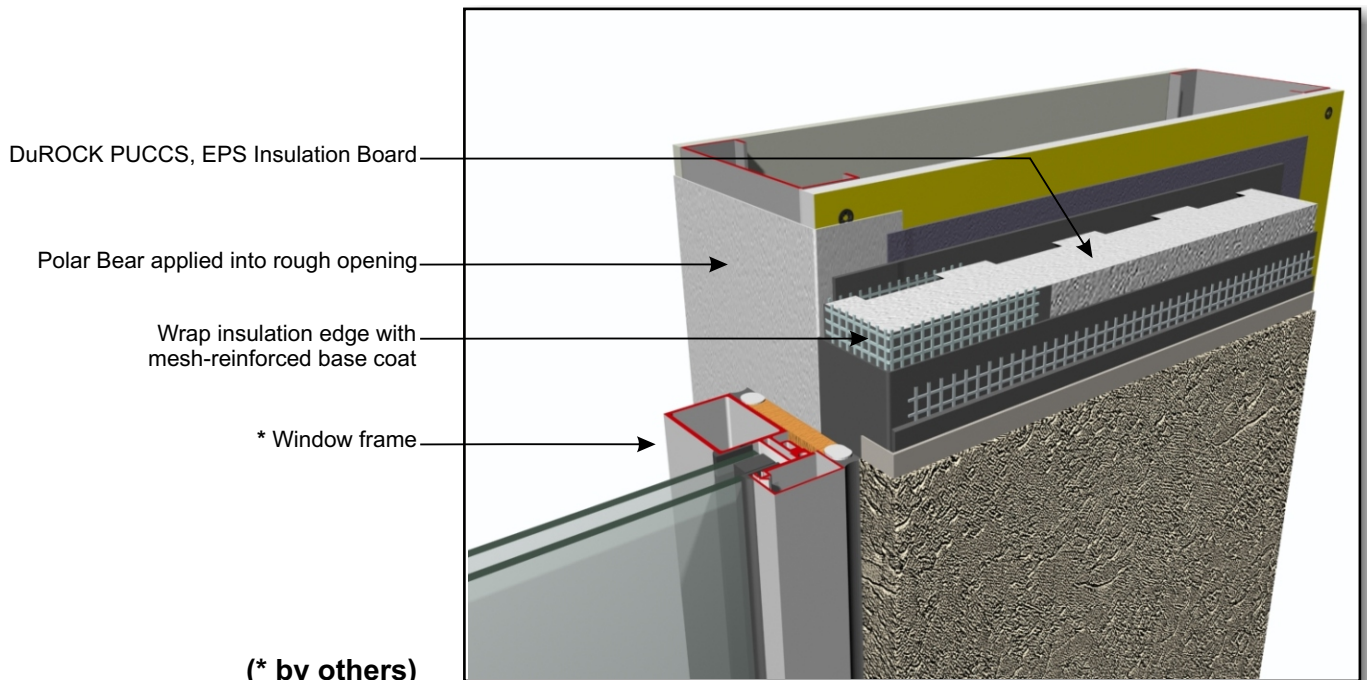


DuROCK
 ARCHITECTURAL FINISHING SYSTEMS



- * Window frame
- * Backer Rod and Sealant (vented)
- Polar Bear applied into rough opening
- * Sealant under flashing (optional)
- * Metal flashing
- Wrap insulation edge with mesh-reinforced base coat
- DuROCK PUCCS, EPS Insulation Board

CHRC D03, WINDOW SILL



- DuROCK PUCCS, EPS Insulation Board
- Polar Bear applied into rough opening
- Wrap insulation edge with mesh-reinforced base coat
- * Window frame

(* by others)

CHRC D04, WINDOW JAMB