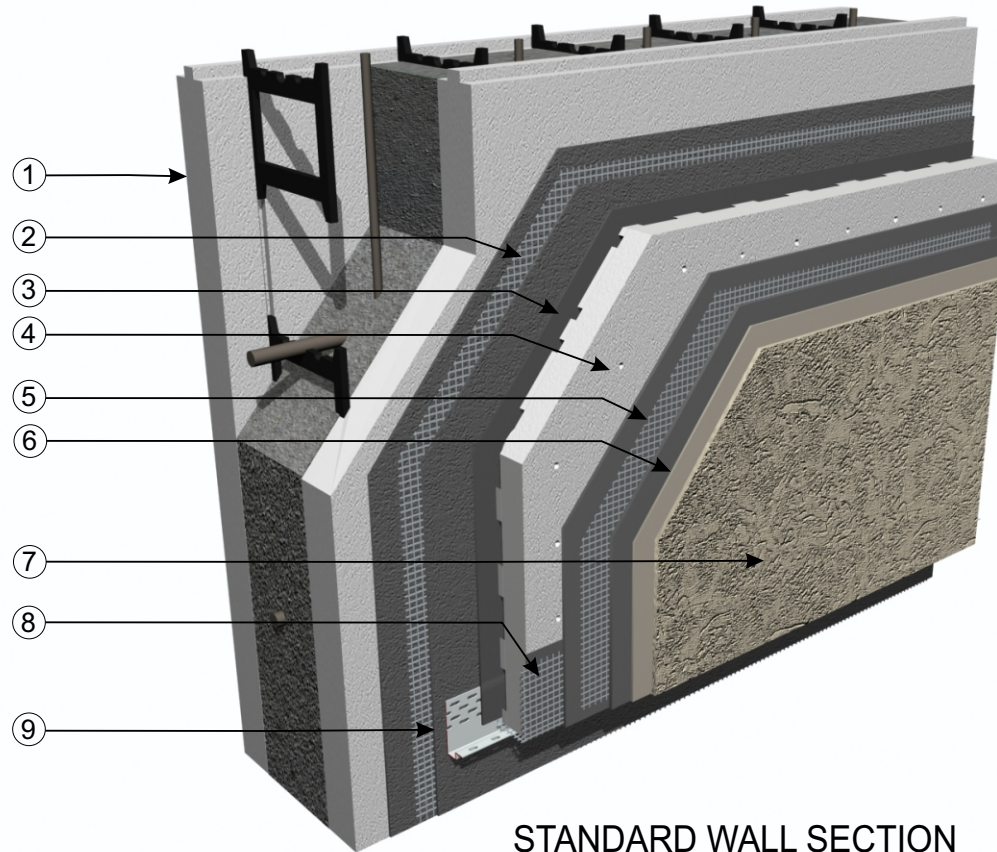


PUCCS EIFS over ICF

Insulated Concrete Form (ICF) system
For High Rise and Non-Combustible construction

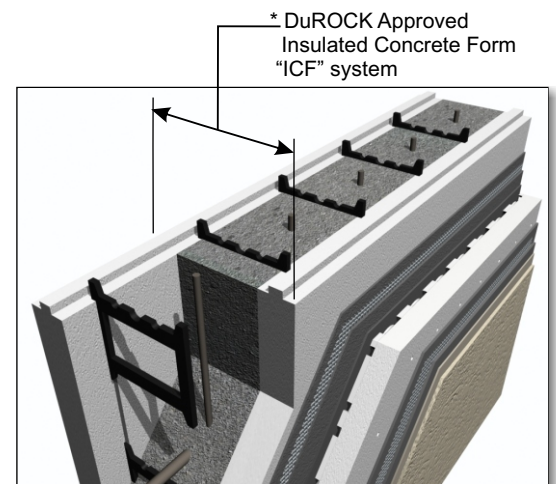


DuROCK



STANDARD WALL SECTION

- ① DuROCK approved Insulated Concrete Form "ICF" system
- ② DuROCK Fibre Mesh embedded in DuROCK Cement Bear moisture barrier
- ③ DuROCK Cement Bear moisture barrier/adhesive
- ④ PUCCS Insulation Board
- ⑤ DuROCK Fibre Mesh embedded in Prep Coat
- ⑥ DuROCK Base Primer
- ⑦ DuROCK Finish Coat
- ⑧ Back-wrapped Starter Mesh
- ⑨ DuROCK Uni-Track



DuROCK's PUCCS EIF system



Alfacing International Limited

101 B-ROYTEC ROAD, WOODBRIDGE, ON,
TEL: (905) 856-0133, FAX: (905) 856-9654
www.durock.com

ARCHITECTURAL FINISHING SYSTEMS

DISCLAIMER:

DuROCK has produced this detail as an architectural guide for the selection of DuROCK products and systems. It must be modified and adapted for use in specific projects in particular where governing codes and standards may have additional requirements. DuROCK is not liable for design and workmanship associated with the use of this detail. Please refer to www.durock.com for latest revisions.

**PUCCS-ICF
COMMERCIAL**

Last revise: Jun 2015

Issued: Jun 01/11

01 of 04

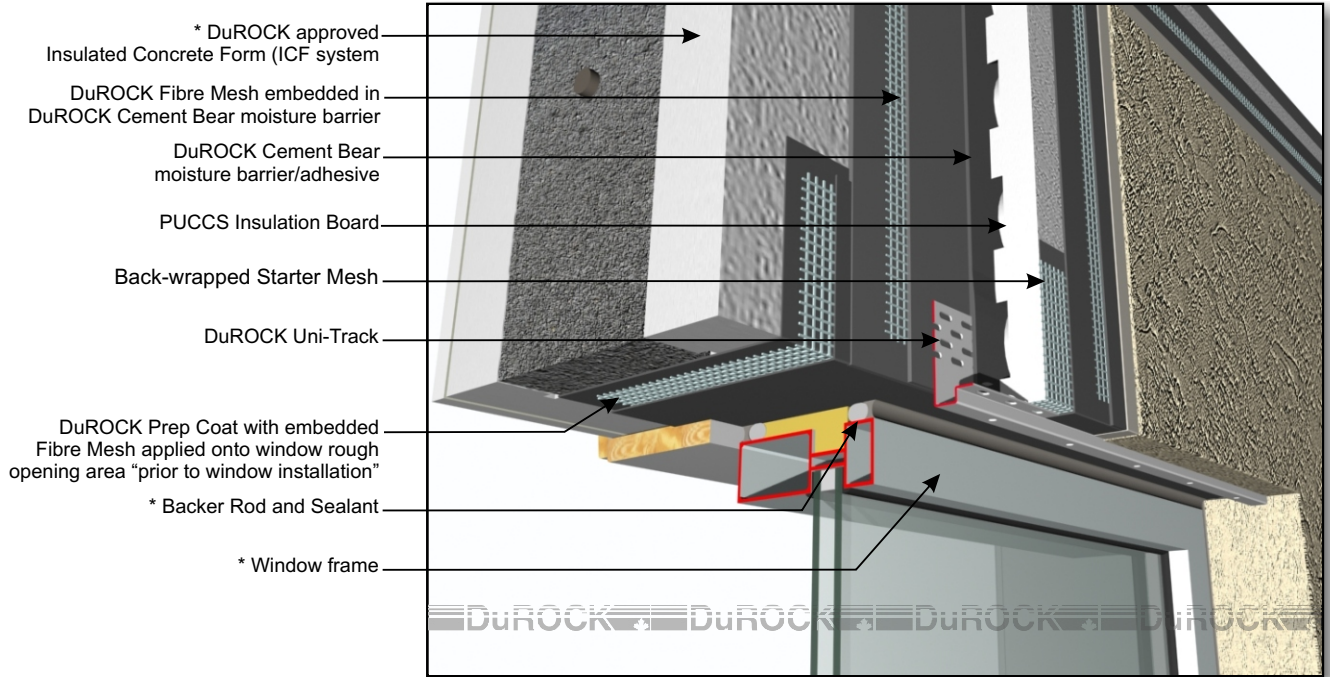
PUCCS EIFS over ICF

Insulated Concrete Form (ICF) system

For High Rise and Non-Combustible construction

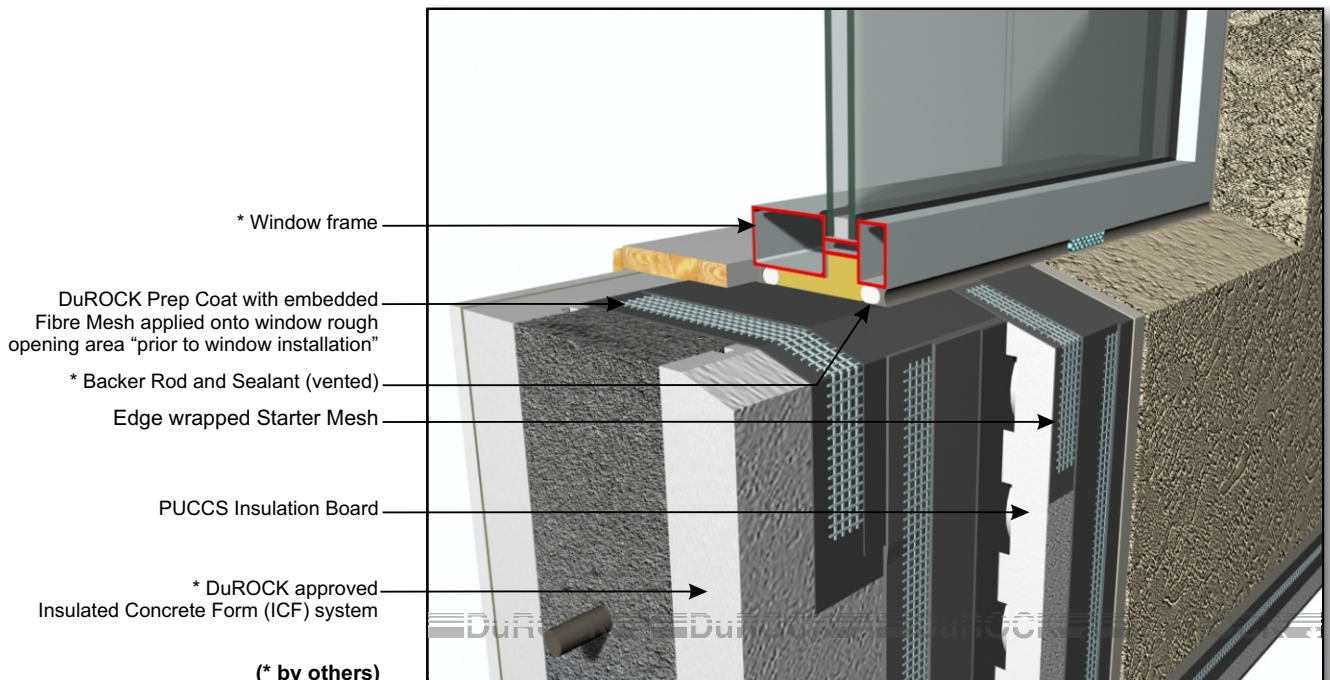


DuROCK



- * DuROCK approved Insulated Concrete Form (ICF) system
- DuROCK Fibre Mesh embedded in DuROCK Cement Bear moisture barrier
- DuROCK Cement Bear moisture barrier/adhesive
- PUCCS Insulation Board
- Back-wrapped Starter Mesh
- DuROCK Uni-Track
- DuROCK Prep Coat with embedded Fibre Mesh applied onto window rough opening area "prior to window installation"
- * Backer Rod and Sealant
- * Window frame

PUCCS-ICF (01) WINDOW HEADER



- * Window frame
- DuROCK Prep Coat with embedded Fibre Mesh applied onto window rough opening area "prior to window installation"
- * Backer Rod and Sealant (vented)
- Edge wrapped Starter Mesh
- PUCCS Insulation Board
- * DuROCK approved Insulated Concrete Form (ICF) system
- (* by others)

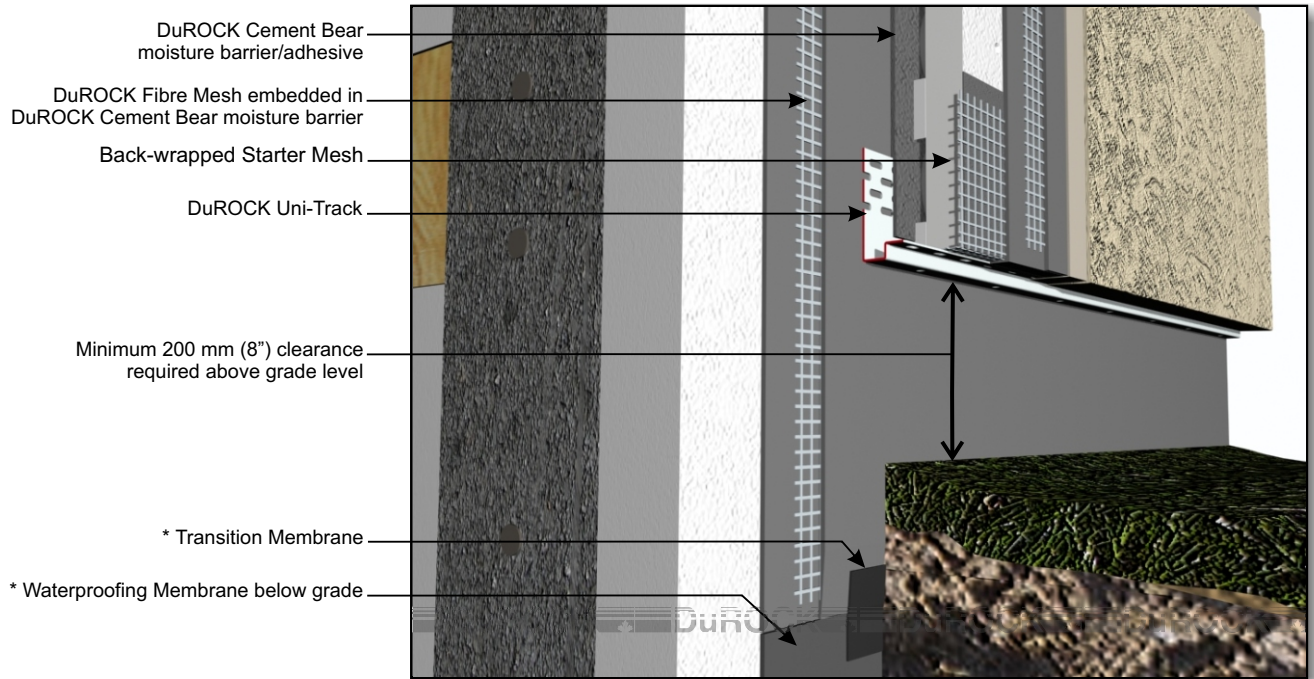
PUCCS-ICF (02) WINDOW SILL

PUCCS EIFS over ICF

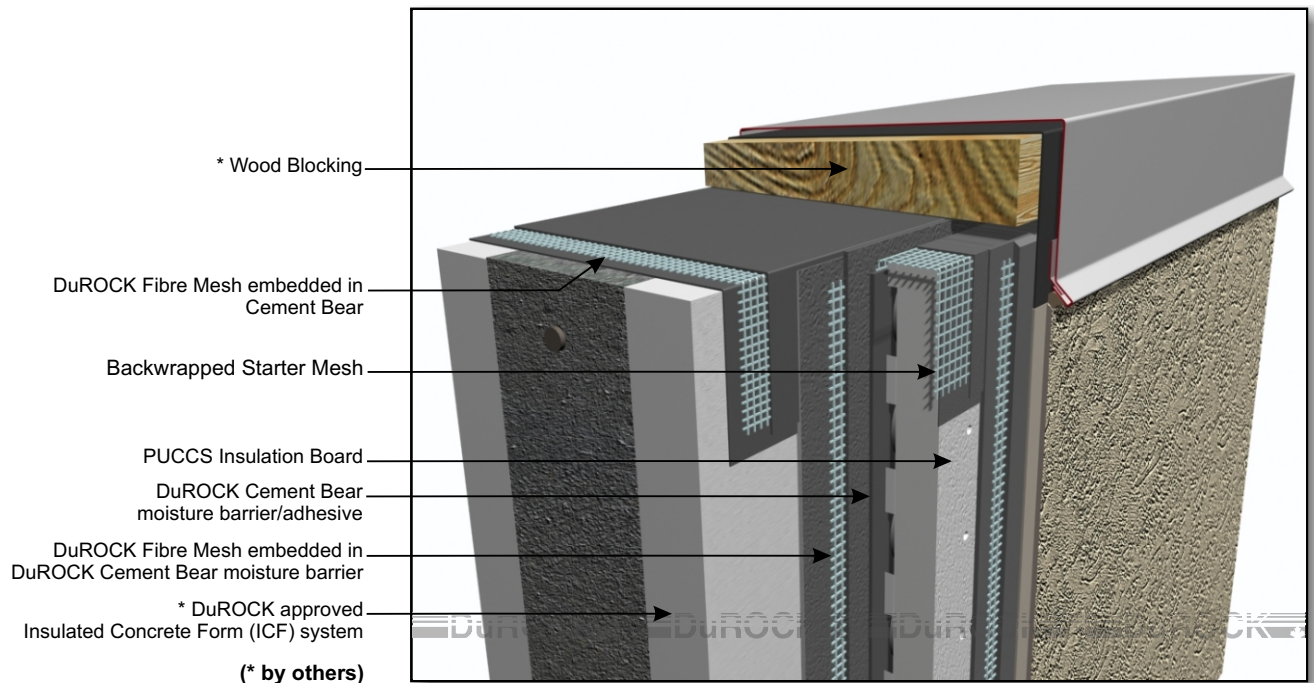
Insulated Concrete Form (ICF) system
For High Rise and Non-Combustible construction



DuROCK



PUCCS-ICF (03) TERMINATION AT GRADE



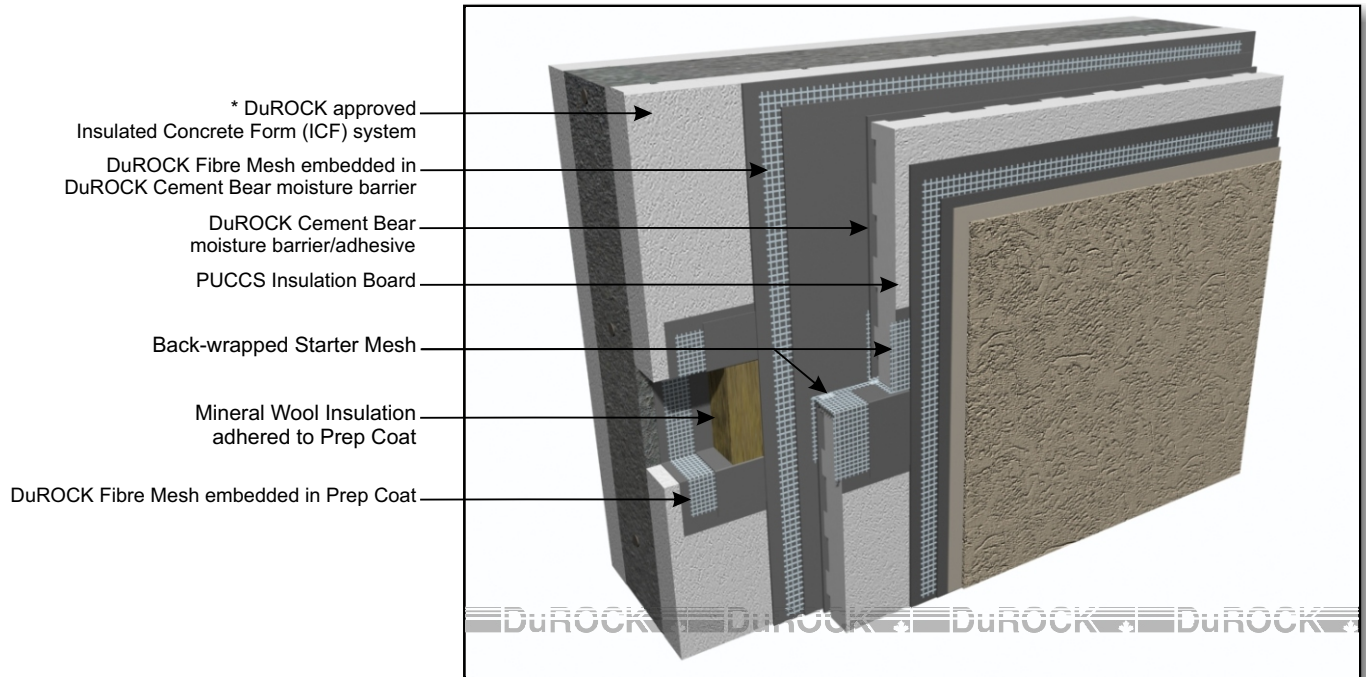
PUCCS-ICF (04) ROOF TOP PARAPET

PUCCS EIFS over ICF

Insulated Concrete Form (ICF) system
For High Rise and Non-Combustible construction

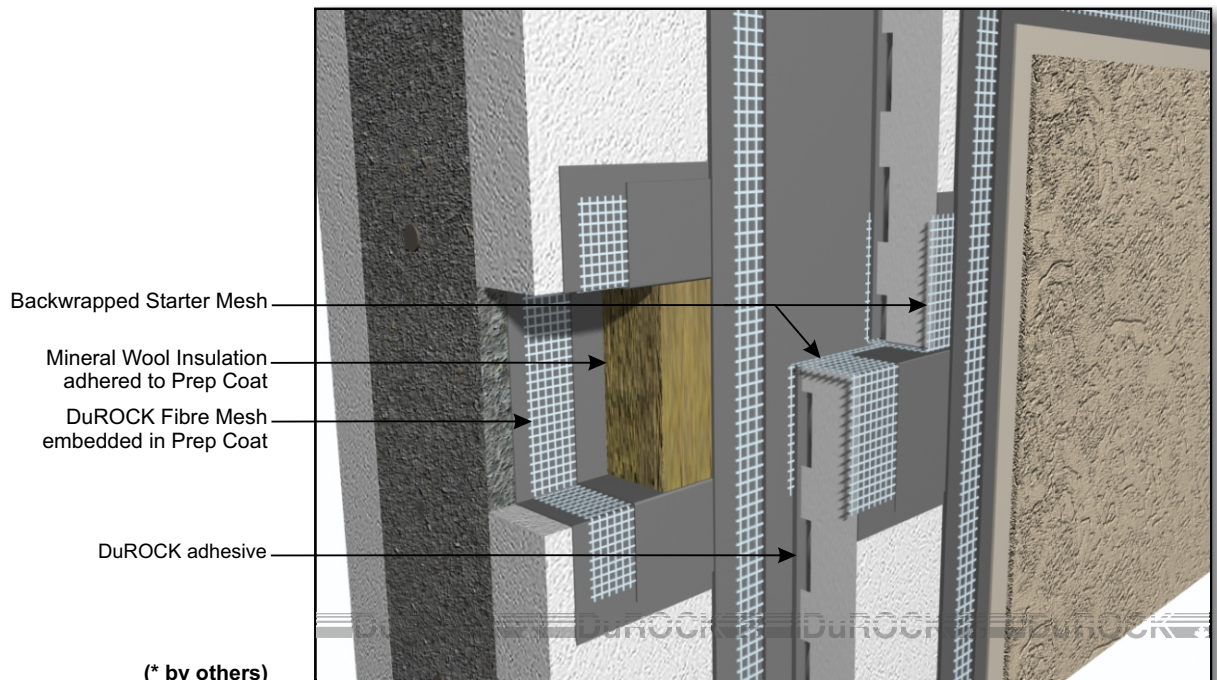


DuROCK



- * DuROCK approved Insulated Concrete Form (ICF) system
- DuROCK Fibre Mesh embedded in DuROCK Cement Bear moisture barrier
- DuROCK Cement Bear moisture barrier/adhesive
- PUCCS Insulation Board
- Back-wrapped Starter Mesh
- Mineral Wool Insulation adhered to Prep Coat
- DuROCK Fibre Mesh embedded in Prep Coat

PUCCS-ICF (05A) FIRE STOPPING DETAIL (VIEW A)



- Backwrapped Starter Mesh
- Mineral Wool Insulation adhered to Prep Coat
- DuROCK Fibre Mesh embedded in Prep Coat
- DuROCK adhesive

(* by others)

PUCCS-ICF (05B) FIRE STOPPING DETAIL (VIEW B)