

\* DuROCK approved  
Insulated Concrete Form (ICF) System

DuROCK Fibre Mesh  
embedded in DuROCK Cement Bear  
moisture barrier

DuROCK Cement Bear  
moisture barrier/adhesive

PUCCS Insulation Board

DuROCK Fibre Mesh  
embedded in DuROCK Prep Coat

DuROCK Finish Coat

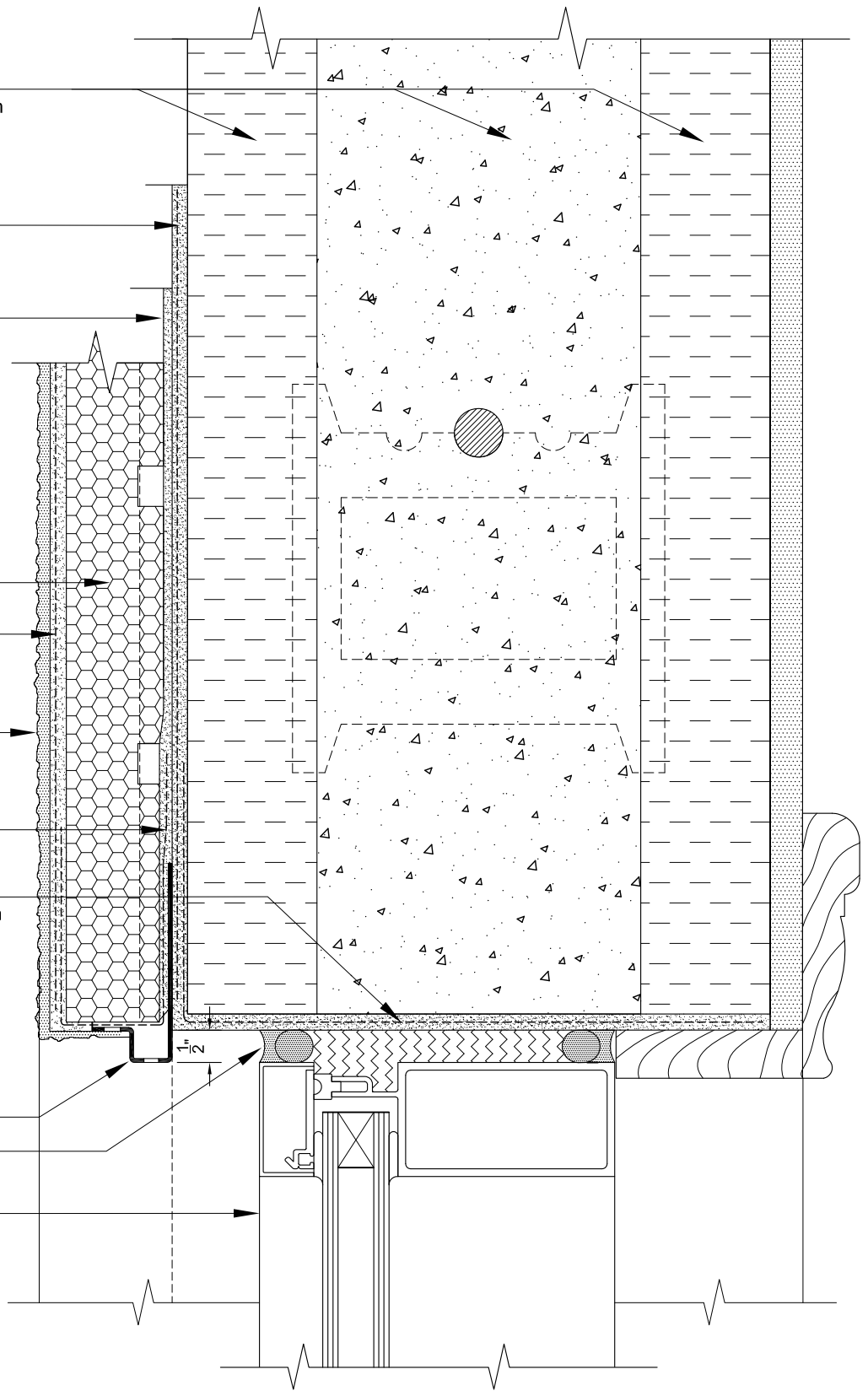
Back-wrapped Starter Mesh

DuROCK Prep Coat with embedded  
Fibre Mesh applied onto window rough  
opening area "prior to window  
installation"

DuROCK Uni-Track

\* Backer Rod and Sealant

\* Window



(\* By others)

**DuROCK**

Alfacing International Limited

101-B ROYTEC ROAD  
WOODBRIIDGE, ONTARIO  
TEL : (905) 856-0133, FAX : (905) 856-9654  
www.durock.com

ARCHITECTURAL FINISHING SYSTEMS

**PUCCS-ICF-HRNC COMMERCIAL**  
(FOR HIGH RISE AND NON-COMBUSTIBLE CONSTRUCTION)

DRAWING TITLE:

**WINDOW HEADER DETAIL**

DISCLAIMER:

DuROCK has produced this detail as an architectural guide for the selection of DuRock products and systems. It must be modified and adapted for use in specific projects in particular where governing codes and standards may have additional requirements. DuROCK is not liable for design and workmanship associated with the use of this detail. Please refer to www.durock.com for latest revisions.

LAST REVISION: JUN 2015

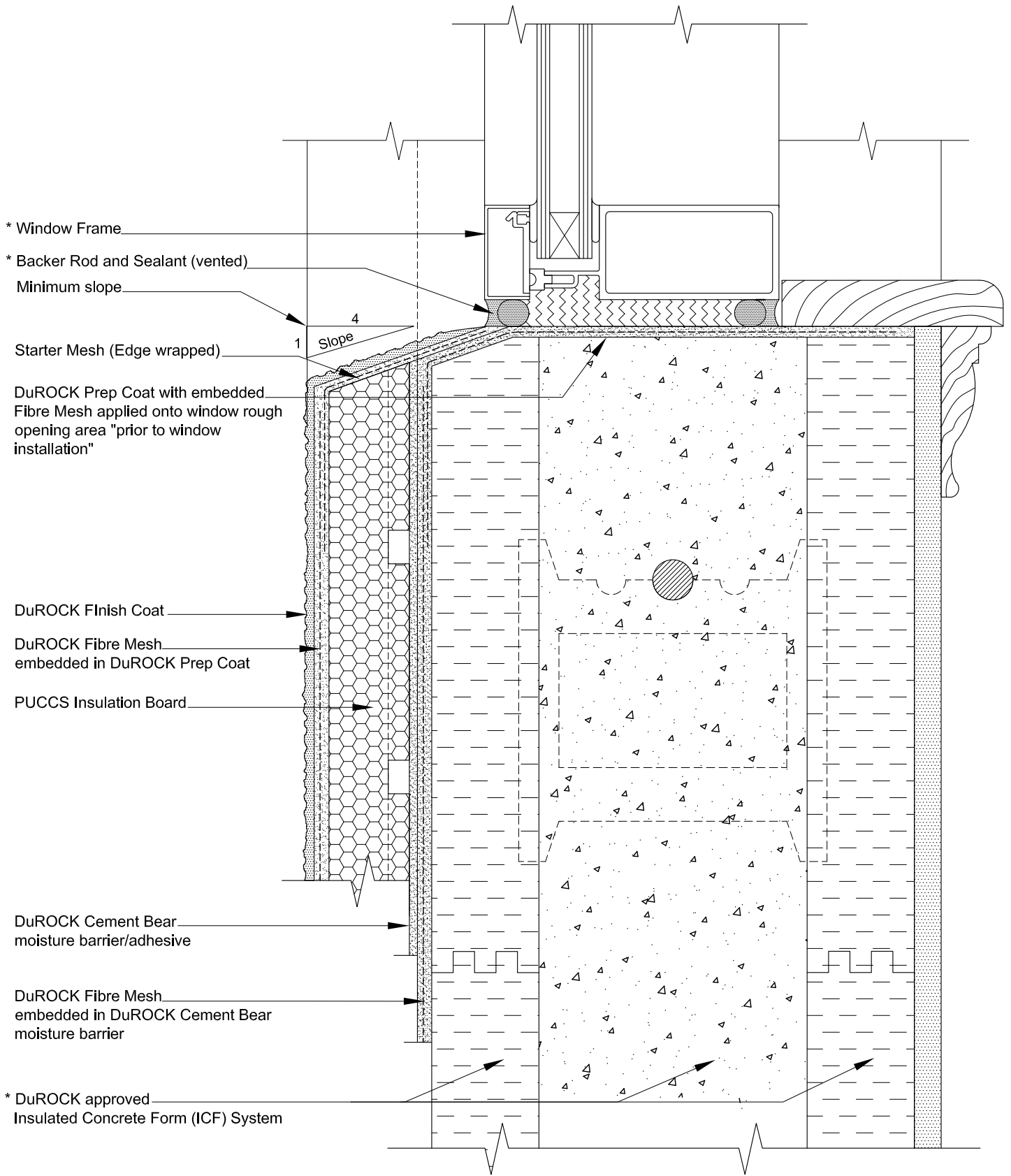
ISSUED: MAR 2011

DRAWN BY: RIZ

SCALE: NTS

PUCCS-ICF-HRNC

01 of 05



- \* Window Frame
- \* Backer Rod and Sealant (vented)
- Minimum slope
- 4
- 1 Slope
- Starter Mesh (Edge wrapped)
- DuROCK Prep Coat with embedded Fibre Mesh applied onto window rough opening area "prior to window installation"
- DuROCK Finish Coat
- DuROCK Fibre Mesh embedded in DuROCK Prep Coat
- PUCCS Insulation Board
- DuROCK Cement Bear moisture barrier/adhesive
- DuROCK Fibre Mesh embedded in DuROCK Cement Bear moisture barrier
- \* DuROCK approved Insulated Concrete Form (ICF) System

(\* By others)

**DuROCK**

Alfacing International Limited

101-B ROYTEC ROAD  
WOODBRIDGE, ONTARIO  
TEL : (905) 856-0133, FAX : (905) 856-9654  
www.durock.com

ARCHITECTURAL FINISHING SYSTEMS

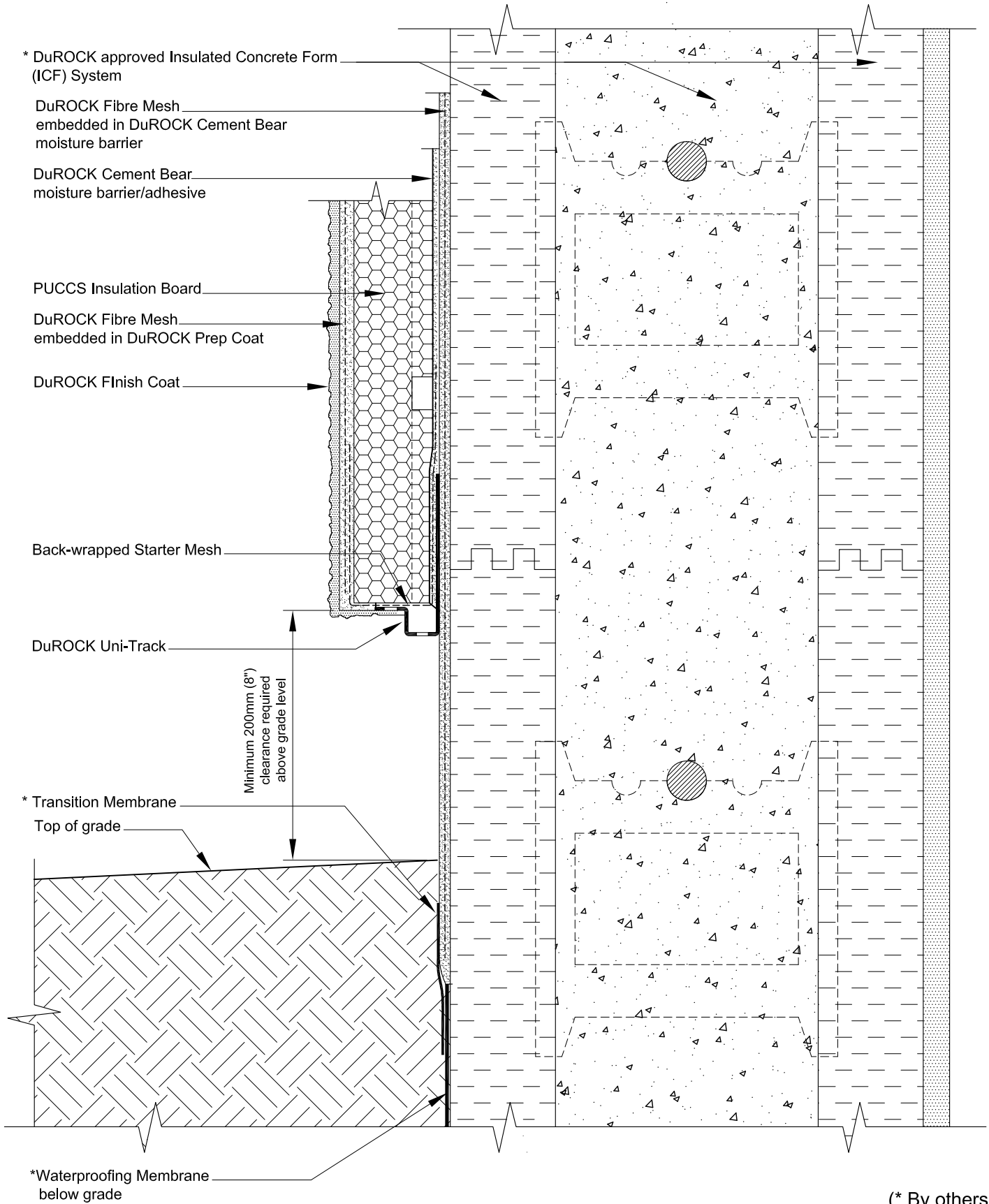
**PUCCS-ICF-HRNC COMMERCIAL**  
(FOR HIGH RISE AND NON-COMBUSTIBLE CONSTRUCTION)

DRAWING TITLE:  
**WINDOW SILL DETAIL**

DISCLAIMER:  
DuROCK has produced this detail as an architectural guide for the selection of DuRock products and systems. It must be modified and adapted for use in specific projects in particular where governing codes and standards may have additional requirements. DuROCK is not liable for design and workmanship associated with the use of this detail. Please refer to www.durock.com for latest revisions.

LAST REVISE: JUN 2015  
ISSUED: MAR 2011  
DRAWN BY: RIZ  
SCALE: NTS

PUCCS-ICF-HRNC  
**02 of 05**



(\* By others)

\* Metal Cap Flashing  
 \* Wood Blocking  
 \* Transition Membrane  
 DuROCK Fibre Mesh  
 embedded in Cement Bear  
 applied on top of parapet

Back-wrapped Starter Mesh

\* Sealant under flashing

PUCCS Insulation Board

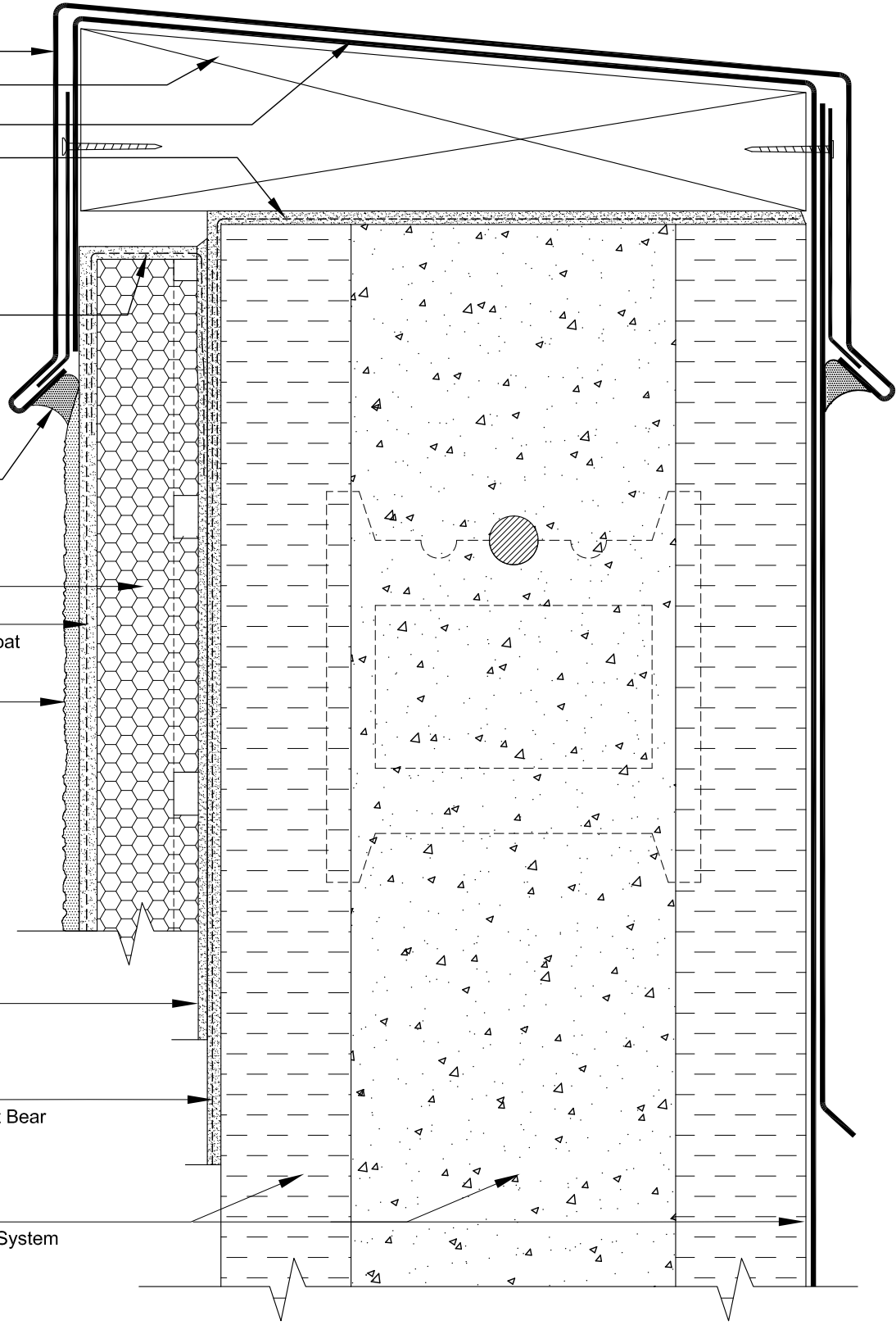
DuROCK Fibre Mesh  
 embedded in DuROCK Prep Coat

DuROCK Finish Coat

DuROCK Cement Bear  
 moisture barrier/adhesive

DuROCK Fibre Mesh  
 embedded in DuROCK Cement Bear  
 moisture barrier

\* DuROCK approved  
 Insulated Concrete Form (ICF) System



(\* By others)

**DuROCK**  
 Alfacing International Limited  
 101-B ROYTEC ROAD  
 WOODBRIDGE, ONTARIO  
 TEL : (905) 856-0133, FAX : (905) 856-9654  
 www.durock.com  
 ARCHITECTURAL FINISHING SYSTEMS

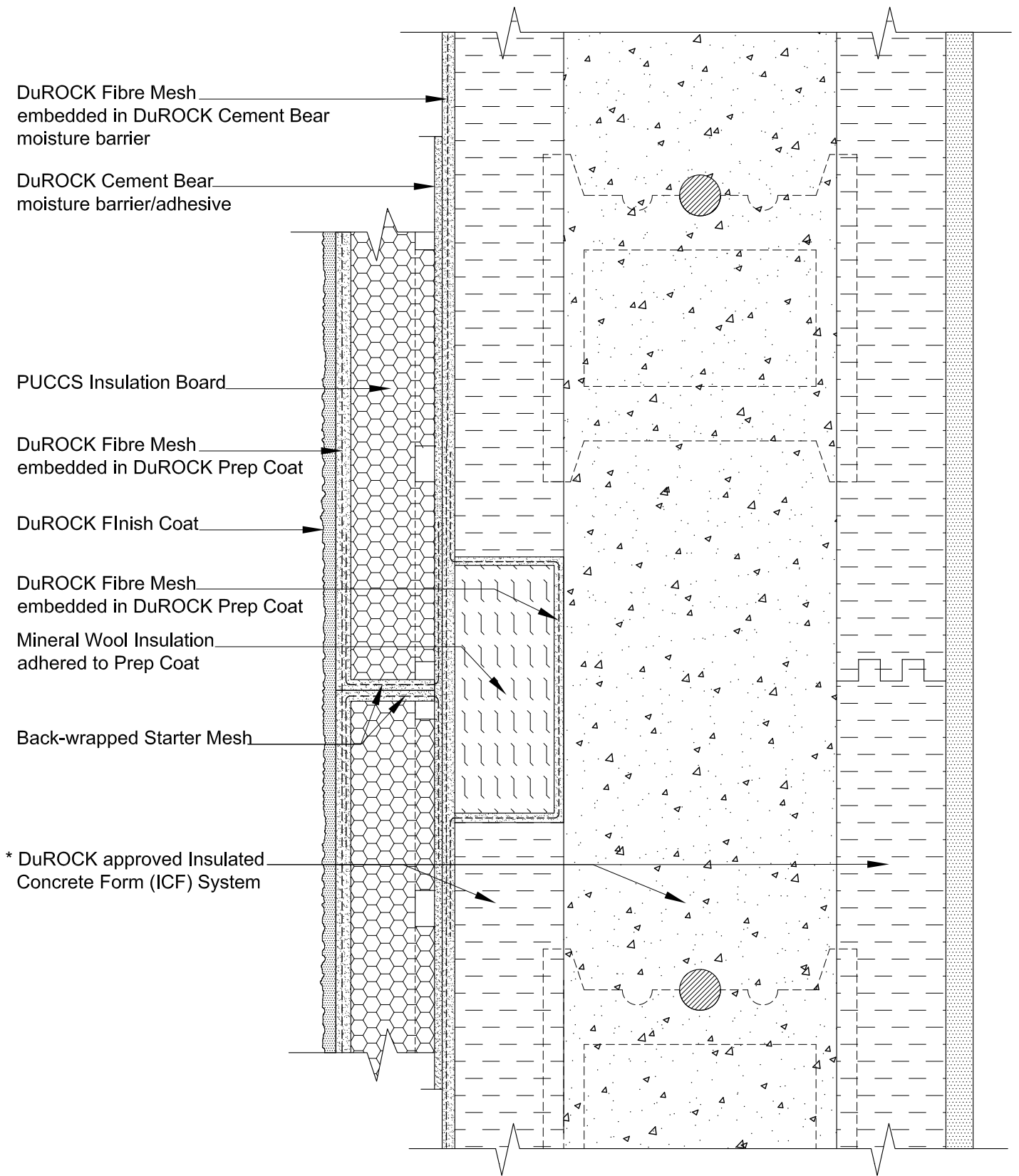
**PUCCS-ICF-HRNC COMMERCIAL**  
 (FOR HIGH RISE AND NON-COMBUSTIBLE CONSTRUCTION)

DRAWING TITLE:  
**ROOF TOP PARAPET**

DISCLAIMER:  
 DuROCK has produced this detail as an architectural guide for the selection of DuRock products and systems. It must be modified and adapted for use in specific projects in particular where governing codes and standards may have additional requirements. DuROCK is not liable for design and workmanship associated with the use of this detail. Please refer to www.durock.com for latest revisions.

LAST REVISE: JUN 2015  
 ISSUED: MAR 2011  
 DRAWN BY: RIZ  
 SCALE: NTS

PUCCS-ICF-HRNC  
**04 of 05**



(\* By others)

**DuROCK**

Alfacing International Limited

101-B ROYTEC ROAD  
WOODBRIDGE, ONTARIO  
TEL : (905) 856-0133, FAX : (905) 856-9654  
www.durock.com

ARCHITECTURAL FINISHING SYSTEMS

**PUCCS-ICF-HRNC COMMERCIAL**  
(FOR HIGH RISE AND NON-COMBUSTIBLE CONSTRUCTION)

DRAWING TITLE:

**FIRE STOPPING DETAIL**

DISCLAIMER:

DuROCK has produced this detail as an architectural guide for the selection of DuRock products and systems. It must be modified and adapted for use in specific projects in particular where governing codes and standards may have additional requirements. DuROCK is not liable for design and workmanship associated with the use of this detail. Please refer to www.durock.com for latest revisions.

LAST REVISION: JUN 2015

ISSUED: MAR 2011

DRAWN BY: RIZ

SCALE: NTS

PUCCS-ICF-HRNC

05 of 05