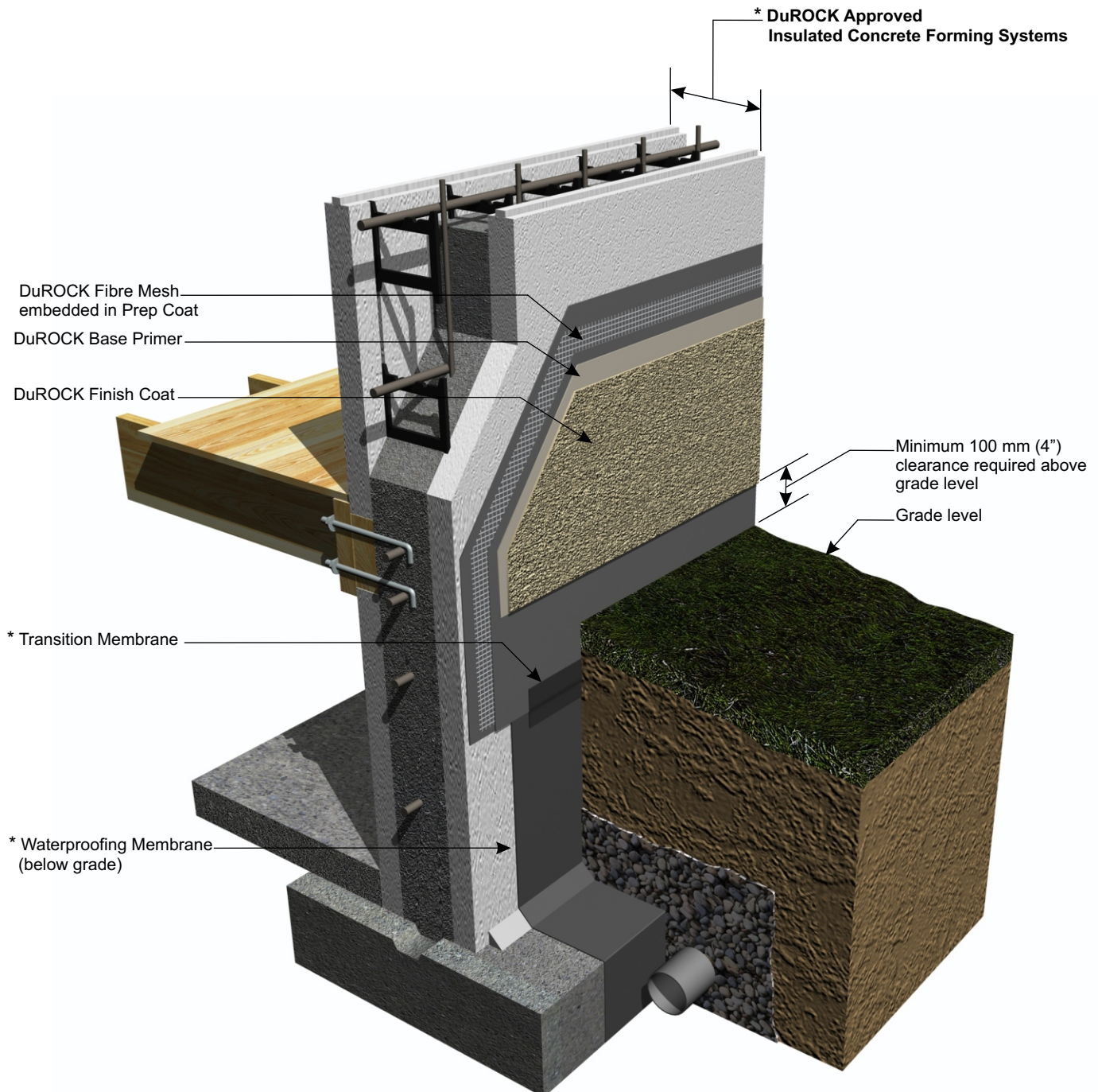


DuROCK Finish over ICF

Insulated Concrete Form (ICF) system
For Low Rise and Combustible construction



Alfacing International Limited

101 B-ROYTEC ROAD, WOODBRIDGE, ON,
TEL: (905) 856-0133, FAX: (905) 856-9654
www.durock.com

ARCHITECTURAL FINISHING SYSTEMS

DISCLAIMER:

DuROCK has produced this detail as an architectural guide for the selection of DuROCK products and systems. It must be modified and adapted for use in specific projects in particular where governing codes and standards may have additional requirements. DuROCK is not liable for design and workmanship associated with the use of this detail. Please refer to www.durock.com for latest revisions.

ICF
RESIDENTIAL

Last revise: Jan 2013

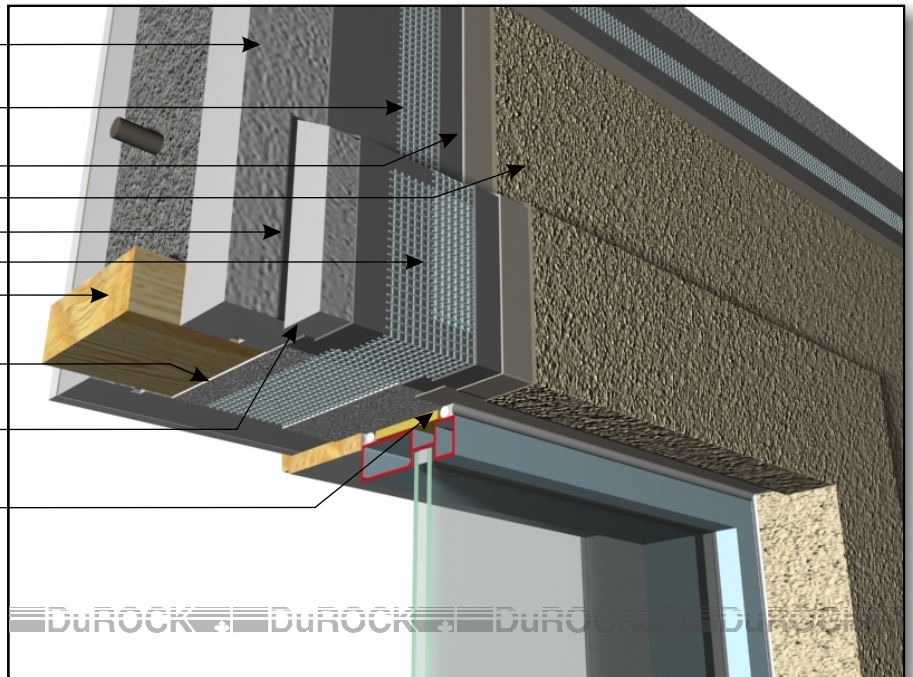
Issued: Jun 01/11

COVER

DuROCK Finish over ICF

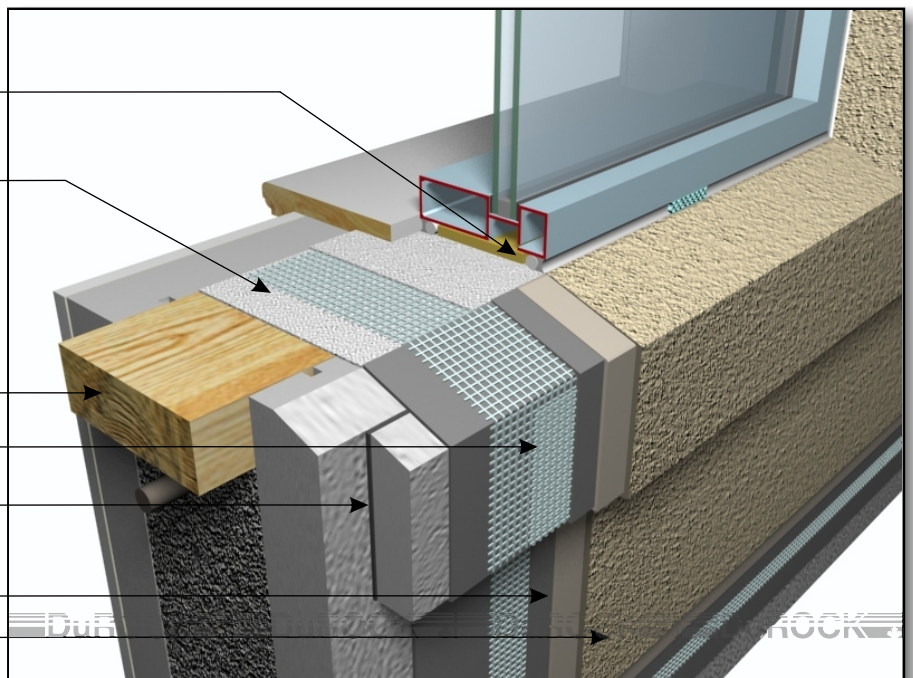
Insulated Concrete Form (ICF) system
For Low Rise and Combustible construction

- * DuROCK Approved Insulated Concrete Forming Systems
- DuROCK Fibre Mesh embedded in DuROCK Prep Coat
- DuROCK Base Primer
- DuROCK Finish Coat
- DuROCK Adhesive
- Overlap Fibre Mesh onto EPS Trim
- * Wood Blocking
- DuROCK Polar Bear with embedded Fibre Mesh
- EPS Trim dropping down 10 mm
- * Backer Rod and Sealant



ICF (01) WINDOW HEADER

- * Backer Rod and Sealant (vented)
- DuROCK Polar Bear with embedded Fibre Mesh
- * Wood Blocking
- Overlap Fibre Mesh onto EIFS Sill Moulding
- DuROCK Adhesive
- DuROCK Base Primer
- DuROCK Finish Coat
- (* by others)



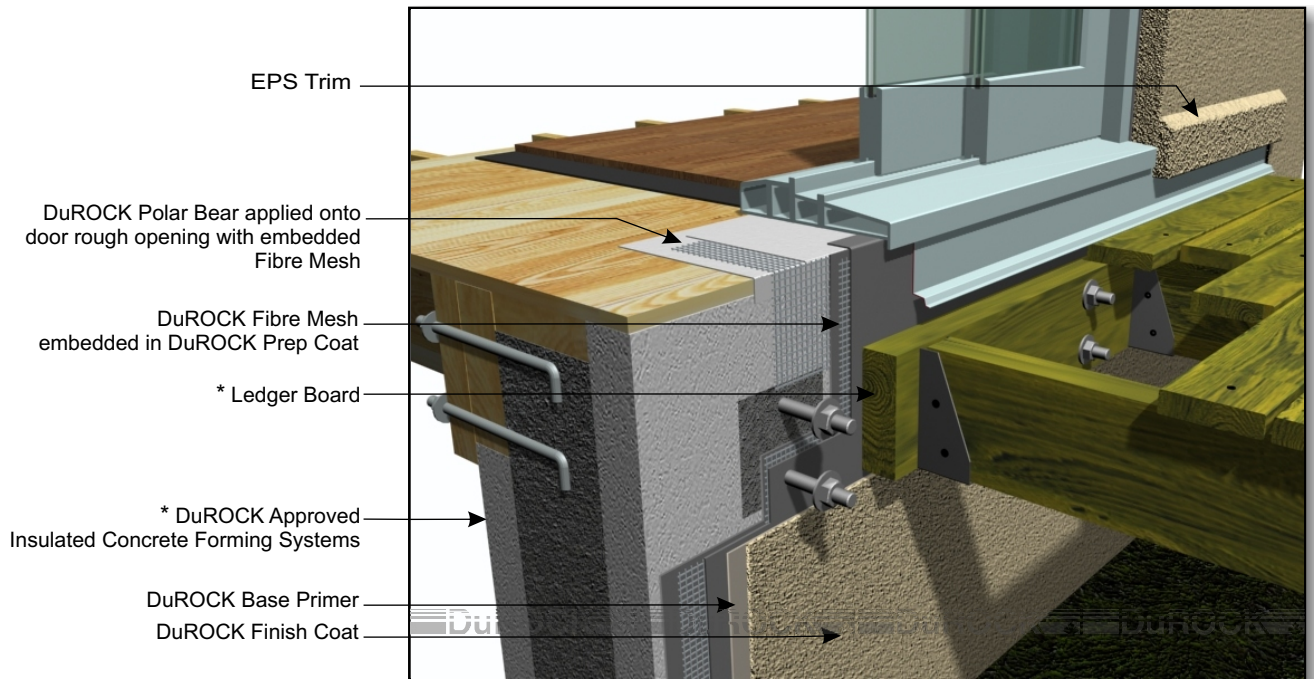
ICF (02) WINDOW SILL

DISCLAIMER:

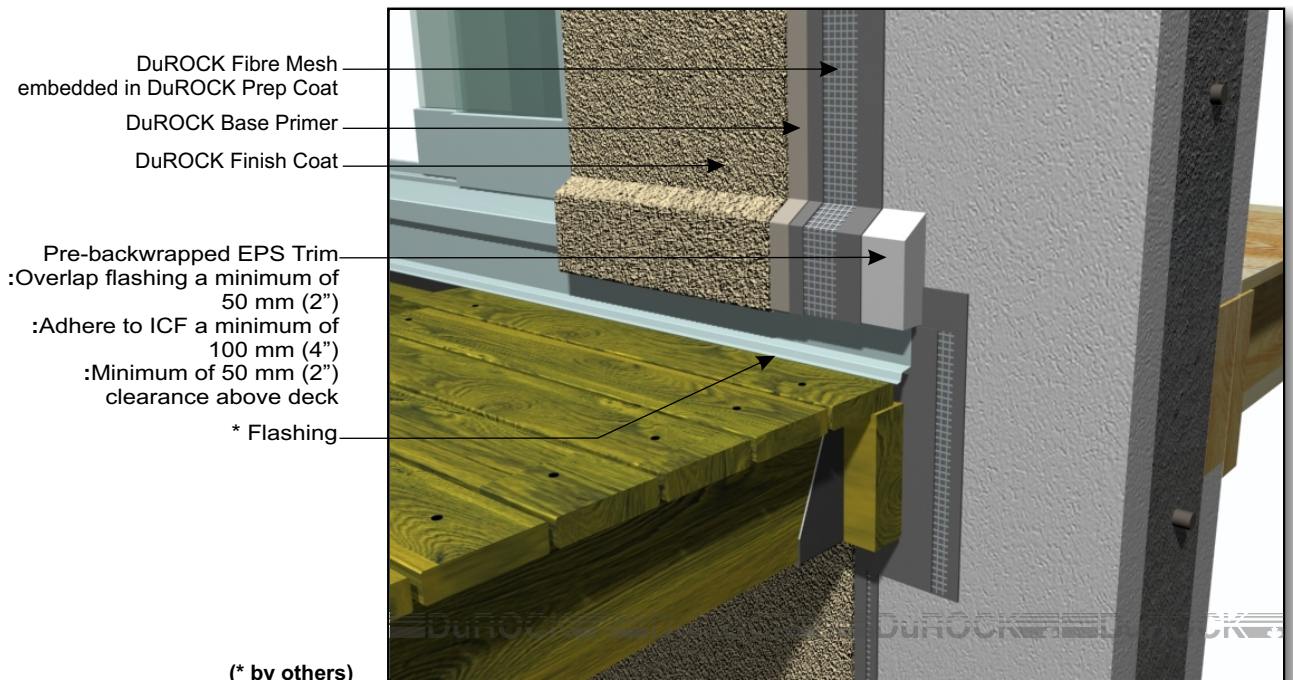
DuROCK has produced this detail as an architectural guide for the selection of DuROCK products and systems. It must be modified and adapted for use in specific projects in particular where governing codes and standards may have additional requirements. DuROCK is not liable for design and workmanship associated with the use of this detail. Please refer to www.durock.com for latest revisions.

DuROCK Finish over ICF

Insulated Concrete Form (ICF) system
For Low Rise and Combustible construction



ICF (03A) DECK/DOOR INTERFACE



(* by others)

ICF (03B) DECK/WALL INTERFACE

DISCLAIMER:

DuROCK has produced this detail as an architectural guide for the selection of DuROCK products and systems. It must be modified and adapted for use in specific projects in particular where governing codes and standards may have additional requirements. DuROCK is not liable for design and workmanship associated with the use of this detail. Please refer to www.durock.com for latest revisions.

ICF
RESIDENTIAL

Last revise: Xxx 0000

Issued: Mar 02/15

02 of 03

DuROCK Finish over ICF

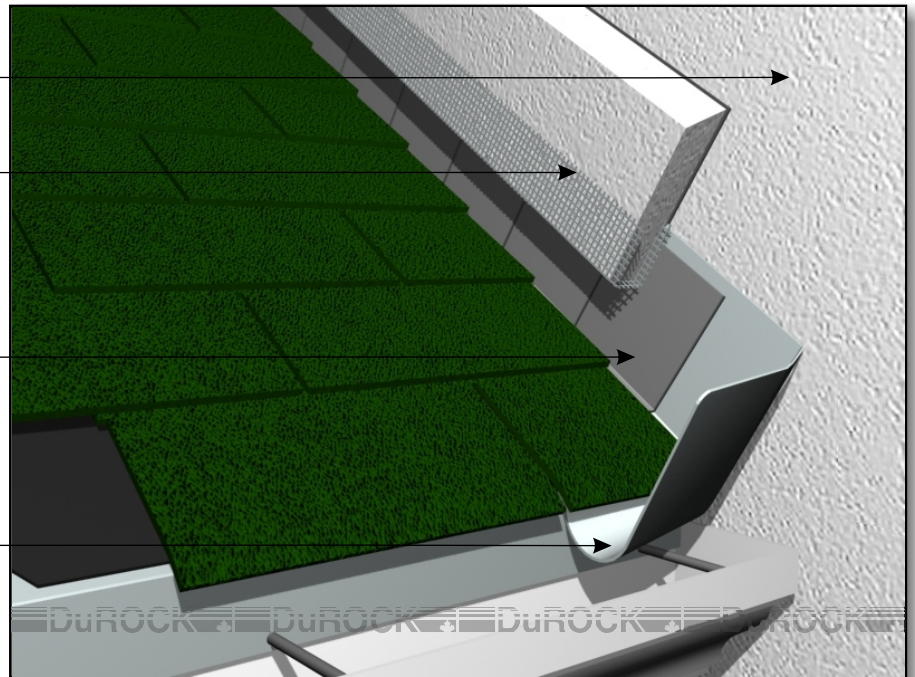
Insulated Concrete Form (ICF) system
For Low Rise and Combustible construction

* DuROCK Approved
Insulated Concrete Forming Systems

Pre-backwrapped EPS Trim
:Overlap flashing a minimum of
50 mm (2")
:Adhere to ICF a minimum of
100 mm (4")
:Minimum of 50 mm (2")
clearance above roof

* Step Flashing

* Roof Diverter Flashing



ICF (04A) SLOPED ROOF, DIVERTER FLASHING

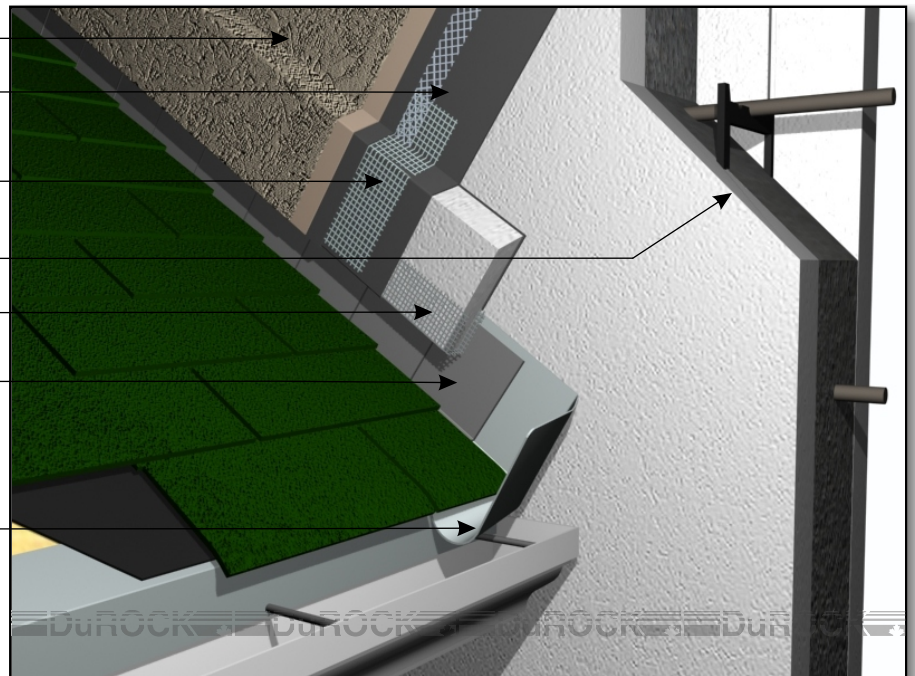
DuROCK Finish Coat
DuROCK Fibre Mesh
embedded in Prep Coat

DuROCK Fibre mesh
wrapped over EPS Trim

* DuROCK Approved
Insulated Concrete Forming Systems
Pre-backwrapped EPS Trim

* Step Flashing

* Roof Diverter Flashing



(* by others)

ICF (0B) SLOPED ROOF, DIVERTER FLASHING

DISCLAIMER:

DuROCK has produced this detail as an architectural guide for the selection of DuROCK products and systems. It must be modified and adapted for use in specific projects in particular where governing codes and standards may have additional requirements. DuROCK is not liable for design and workmanship associated with the use of this detail. Please refer to www.durock.com for latest revisions.

ICF
RESIDENTIAL

Last revise: Xxx 0000

Issued: Mar 02/15

03 of 03