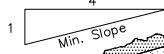


* DuROCK approved Insulated Concrete Form (ICF) System

DuROCK Fibre Mesh embedded in DuROCK Prep Coat

DuROCK Finish Coat



DuROCK Adhesive

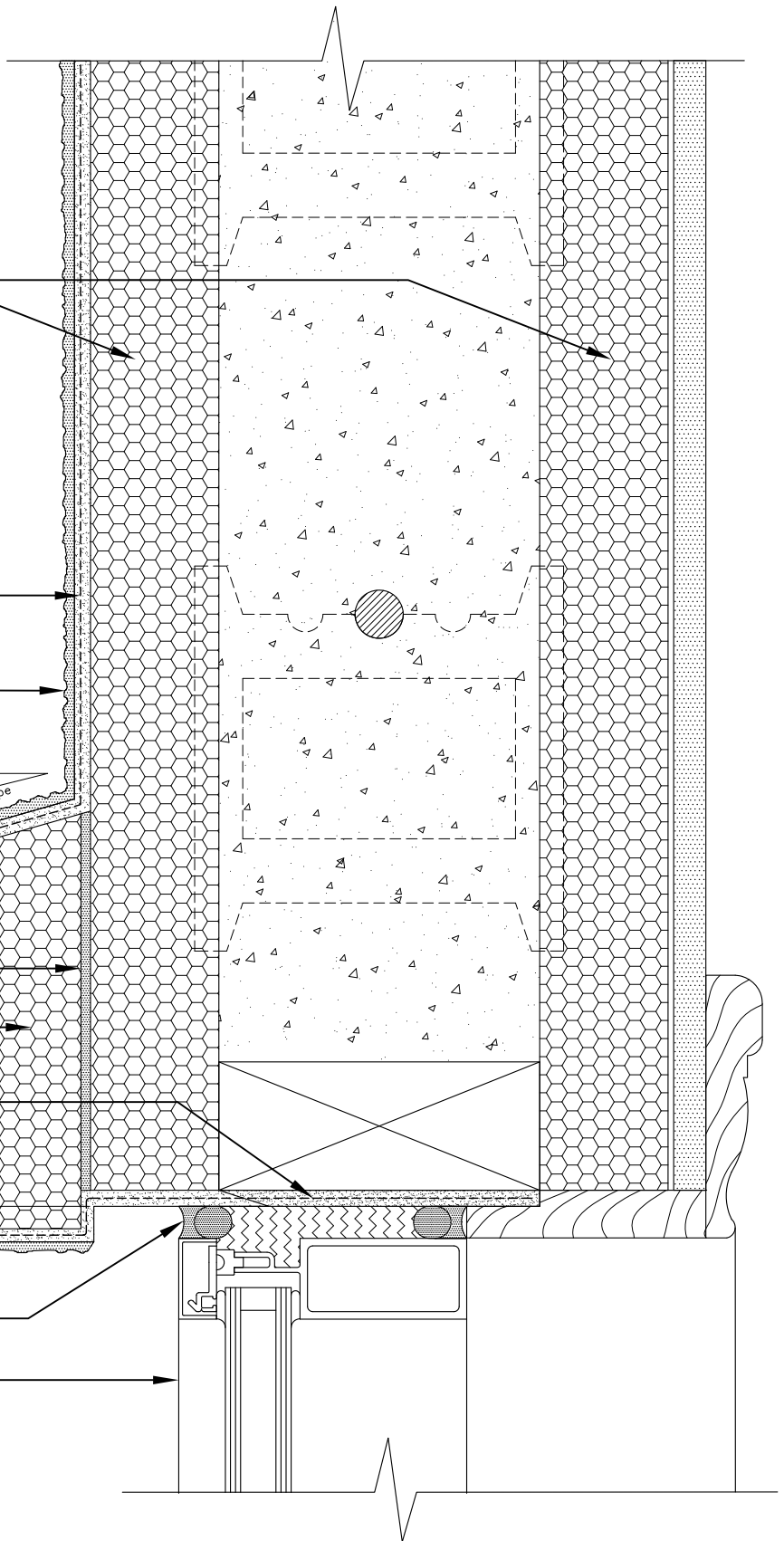
* EPS Trim

DuROCK Polar Bear applied onto Wood Blocking embedded with Fibre Mesh

Approx. 10mm

* Backer Rod and Sealant

* Window



(* By others)

DuROCK
 Alfacing International Limited
 101-B ROYTEC ROAD
 WOODBRIDGE, ONTARIO
 TEL : (905) 856-0133, FAX : (905) 856-9654
 www.durock.com
 ARCHITECTURAL FINISHING SYSTEMS

DuROCK FINISH OVER ICF
 (INSULATED CONCRETE FORMS)

DRAWING TITLE:

WINDOW HEADER

DISCLAIMER:

DuROCK has produced this detail as an architectural guide for the selection of DuRock products and systems. It must be modified and adapted for use in specific projects in particular where governing codes and standards may have additional requirements. DuROCK is not liable for design and workmanship associated with the use of this detail. Please refer to www.durock.com for latest revisions.

LAST REVISION: OCT 2014

ISSUED: MAY 2007

DRAWN BY: RIZ

SCALE: NTS

ICF Finish

01

- * Window
- * Backer Rod and Sealant (vented)
- * Refer to specifications for minimum slope

DuROCK Polar Bear applied onto Wood Blocking embedded with Fibre Mesh

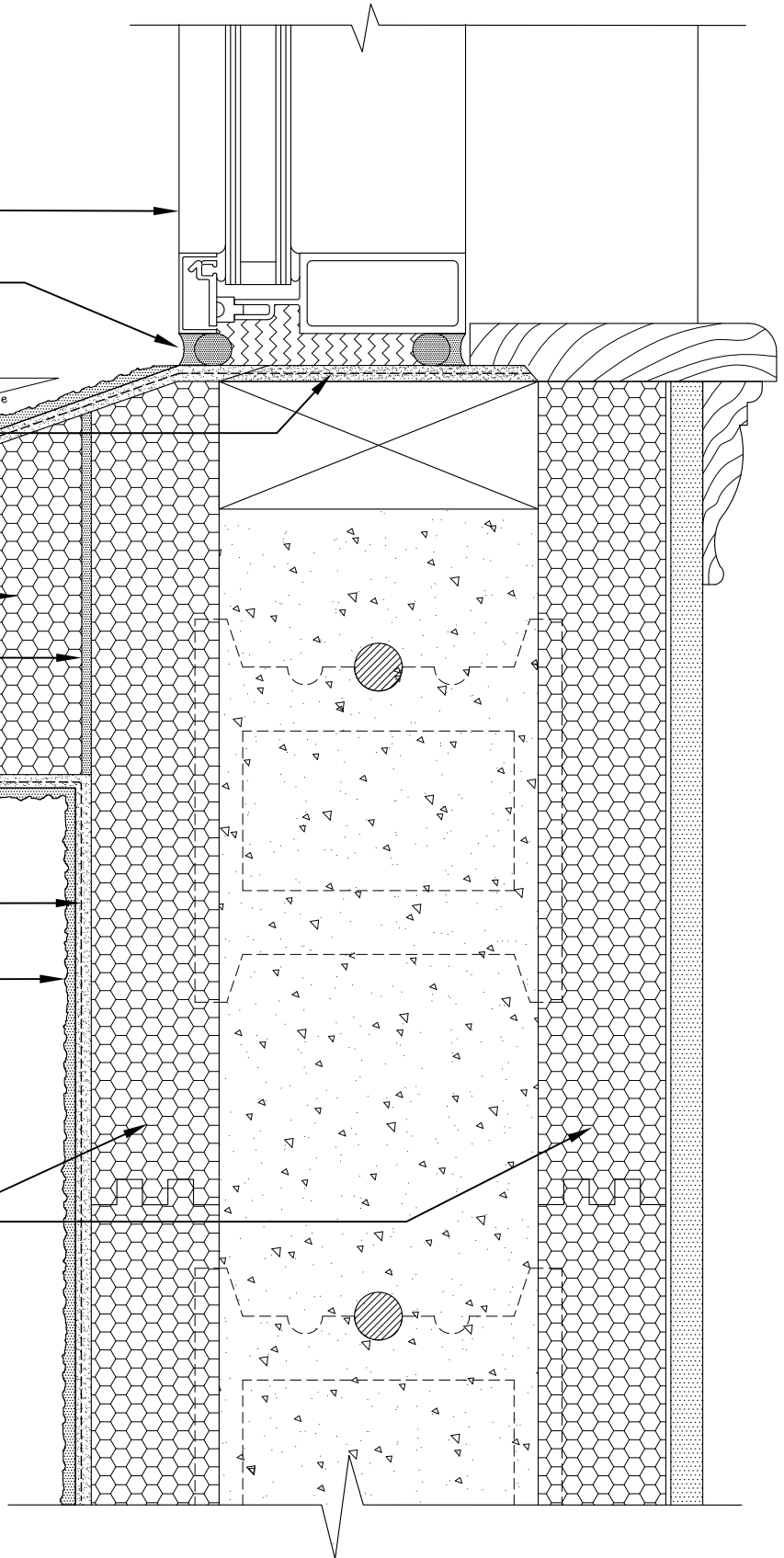
- * EPS Trim or EIFS Moulding

DuROCK Adhesive

DuROCK Fibre Mesh embedded in DuROCK Prep Coat

DuROCK Finish Coat

- * DuROCK approved Insulated Concrete Form (ICF) System



(* By others)

DuROCK

Alfacing International Limited

101-B ROYTEC ROAD
WOODBRIDGE, ONTARIO
TEL : (905) 856-0133, FAX : (905) 856-9654
www.durock.com

ARCHITECTURAL FINISHING SYSTEMS

DuROCK FINISH OVER ICF
(INSULATED CONCRETE FORMS)

DRAWING TITLE:

WINDOW SILL

DISCLAIMER:

DuROCK has produced this detail as an architectural guide for the selection of DuRock products and systems. It must be modified and adapted for use in specific projects in particular where governing codes and standards may have additional requirements. DuROCK is not liable for design and workmanship associated with the use of this detail. Please refer to www.durock.com for latest revisions.

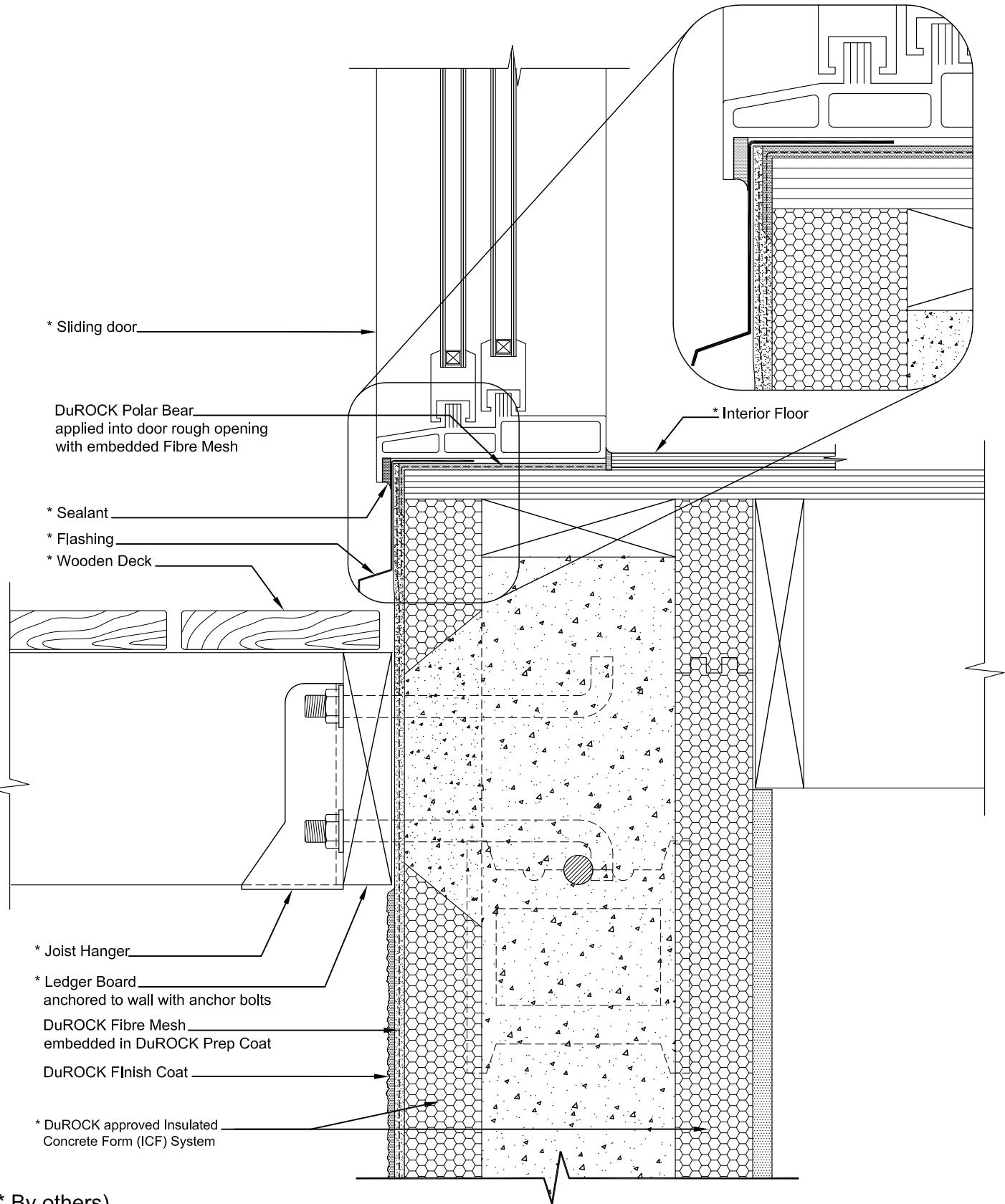
LAST REVISION: OCT 2014

ISSUED: MAY 2007

DRAWN BY: RIZ

SCALE: NTS

ICF Finish
02



(* By others)

DuROCK

Alfacing International Limited

101-B ROYTEC ROAD
WOODBRIIDGE, ONTARIO
TEL : (905) 856-0133, FAX : (905) 856-9654
www.durock.com

ARCHITECTURAL FINISHING SYSTEMS

DuROCK FINISH OVER ICF
(INSULATED CONCRETE FORMS)

DRAWING TITLE:

TERMINATION AT DECK

DISCLAIMER:

DuROCK has produced this detail as an architectural guide for the selection of DuRock products and systems. It must be modified and adapted for use in specific projects in particular where governing codes and standards may have additional requirements. DuROCK is not liable for design and workmanship associated with the use of this detail. Please refer to www.durock.com for latest revisions.

LAST REVISION: OCT 2014

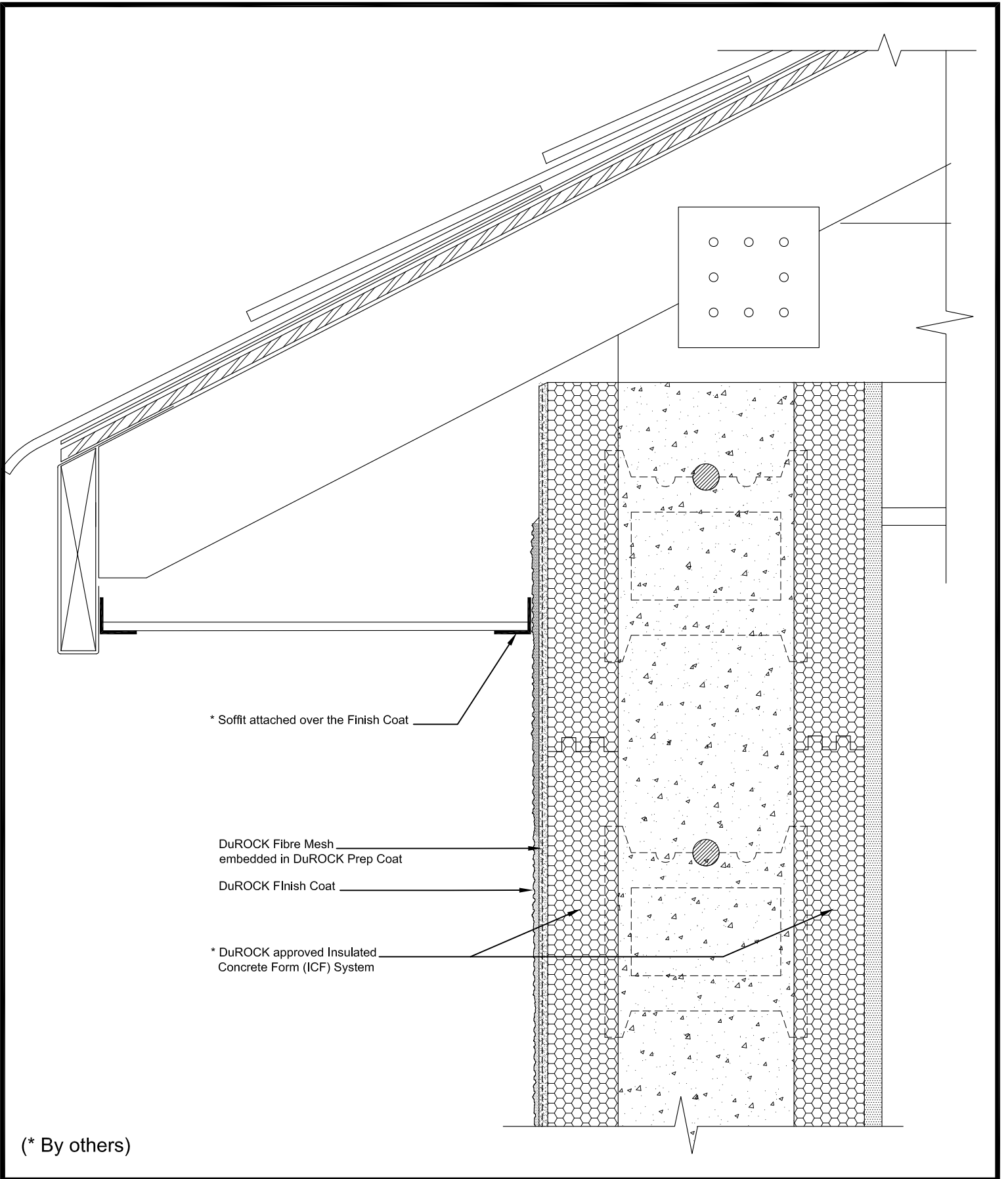
ISSUED: MAY 2007

DRAWN BY: RIZ

SCALE: NTS

ICF Finish

03



* Soffit attached over the Finish Coat

DuROCK Fibre Mesh
embedded in DuROCK Prep Coat

DuROCK Finish Coat

* DuROCK approved Insulated
Concrete Form (ICF) System

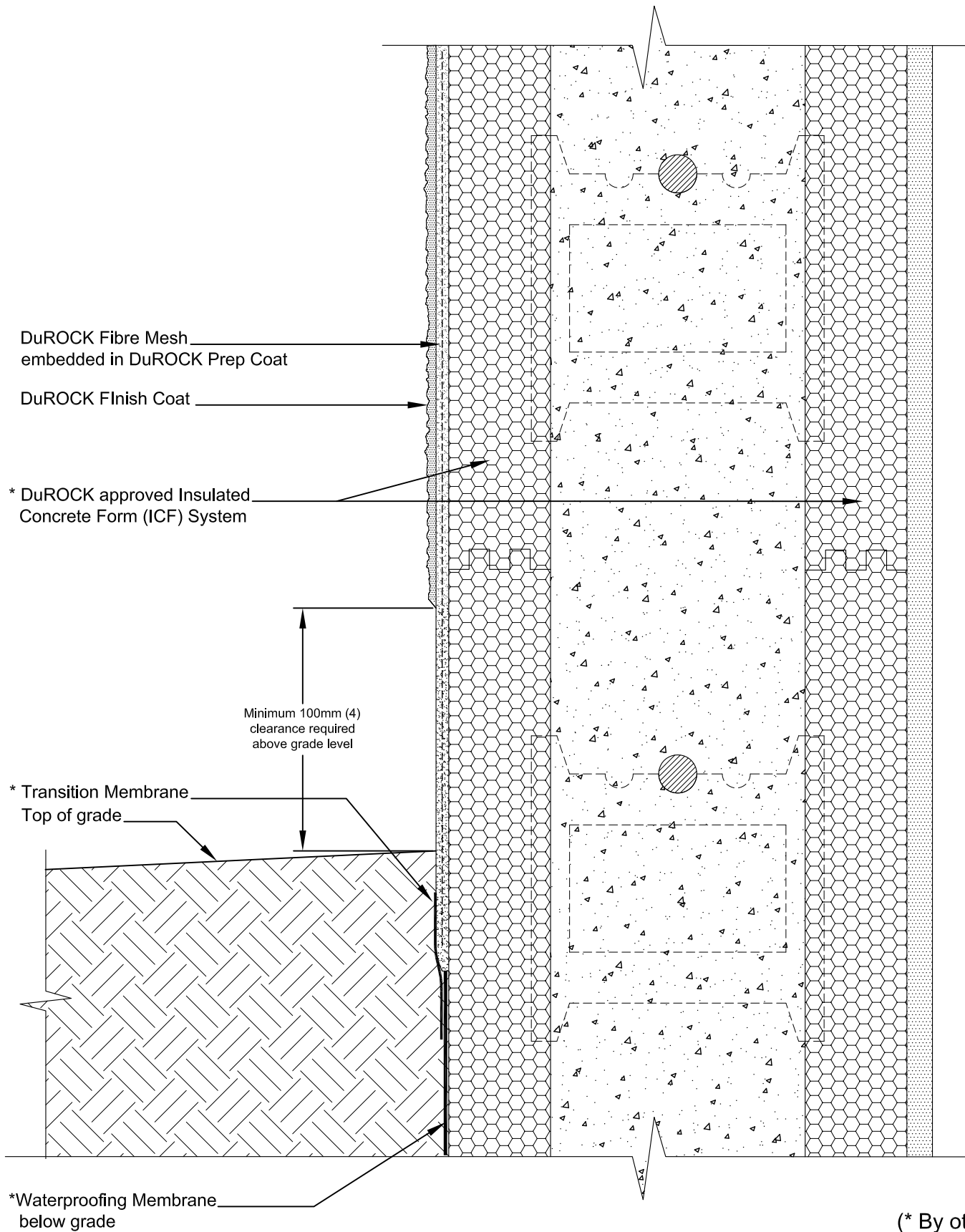
(* By others)

DuROCK
 Alfacing International Limited
 101-B ROYTEC ROAD
 WOODBRIDGE, ONTARIO
 TEL : (905) 856-0133, FAX : (905) 856-9654
 www.durock.com
 ARCHITECTURAL FINISHING SYSTEMS

DuROCK FINISH OVER ICF
 (INSULATED CONCRETE FORMS)
 DRAWING TITLE:
TERMINATION AT SOFFIT

DISCLAIMER:
 DuROCK has produced this detail as an architectural guide for the selection of DuRock products and systems. It must be modified and adapted for use in specific projects in particular where governing codes and standards may have additional requirements. DuROCK is not liable for design and workmanship associated with the use of this detail. Please refer to www.durock.com for latest revisions.

LAST REVISE: OCT 2014
 ISSUED: MAY 2007
 DRAWN BY: RIZ
 SCALE: NTS
ICF Finish
04



DuROCK Fibre Mesh
embedded in DuROCK Prep Coat

DuROCK Finish Coat

* DuROCK approved Insulated
Concrete Form (ICF) System

Minimum 100mm (4)
clearance required
above grade level

* Transition Membrane
Top of grade

*Waterproofing Membrane
below grade

(* By others)



Alfacing International Limited

101-B ROYTEC ROAD
WOODBRIDGE, ONTARIO
TEL : (905) 856-0133, FAX : (905) 856-9654
www.durock.com

ARCHITECTURAL FINISHING SYSTEMS

DuROCK FINISH OVER ICF
(INSULATED CONCRETE FORMS)

DRAWING TITLE:

TERMINATION AT GRADE

DISCLAIMER:

DuROCK has produced this detail as an architectural guide for the selection of DuRock products and systems. It must be modified and adapted for use in specific projects in particular where governing codes and standards may have additional requirements. DuROCK is not liable for design and workmanship associated with the use of this detail. Please refer to www.durock.com for latest revisions.

LAST REVISE: OCT 2014

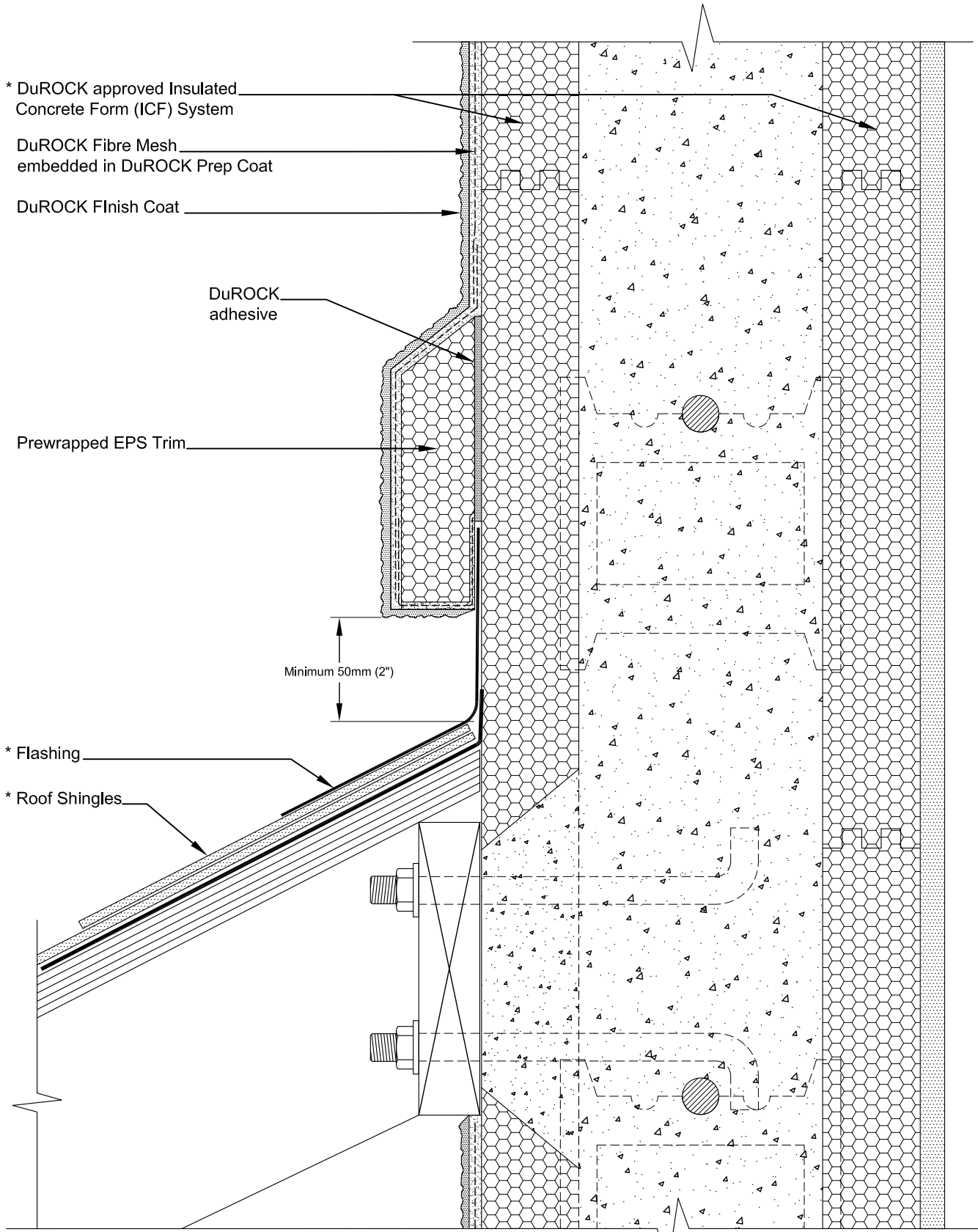
ISSUED: MAY 2007

DRAWN BY: RIZ

SCALE: NTS

ICF Finish

05



(* By others)



Alfacing International Limited

101-B ROYTEC ROAD
WOODBRIDGE, ONTARIO
TEL : (905) 856-0133, FAX : (905) 856-9654
www.durock.com

ARCHITECTURAL FINISHING SYSTEMS

DuROCK FINISH OVER ICF
(INSULATED CONCRETE FORMS)

DRAWING TITLE:

TERMINATION AT SLOPED ROOF

DISCLAIMER:

DuROCK has produced this detail as an architectural guide for the selection of DuRock products and systems. It must be modified and adapted for use in specific projects in particular where governing codes and standards may have additional requirements. DuROCK is not liable for design and workmanship associated with the use of this detail. Please refer to www.durock.com for latest revisions.

LAST REVISION: OCT 2014

ISSUED: MAY 2007

DRAWN BY: RIZ

SCALE: NTS

ICF Finish

06