

* Backer Rod and Sealant

* Sheathing

DuROCK Fibre Mesh
embedded in DuROCK Prep Coat

DuROCK Finish Coat

DuROCK EIFS at wall area

(* by others)

DuROCK
 Alfacing International Limited
 101-B ROYTEC ROAD
 WOODBRIDGE, ONTARIO
 TEL : (905) 856-0133, FAX : (905) 856-9654
 www.durock.com
 ARCHITECTURAL FINISHING SYSTEMS

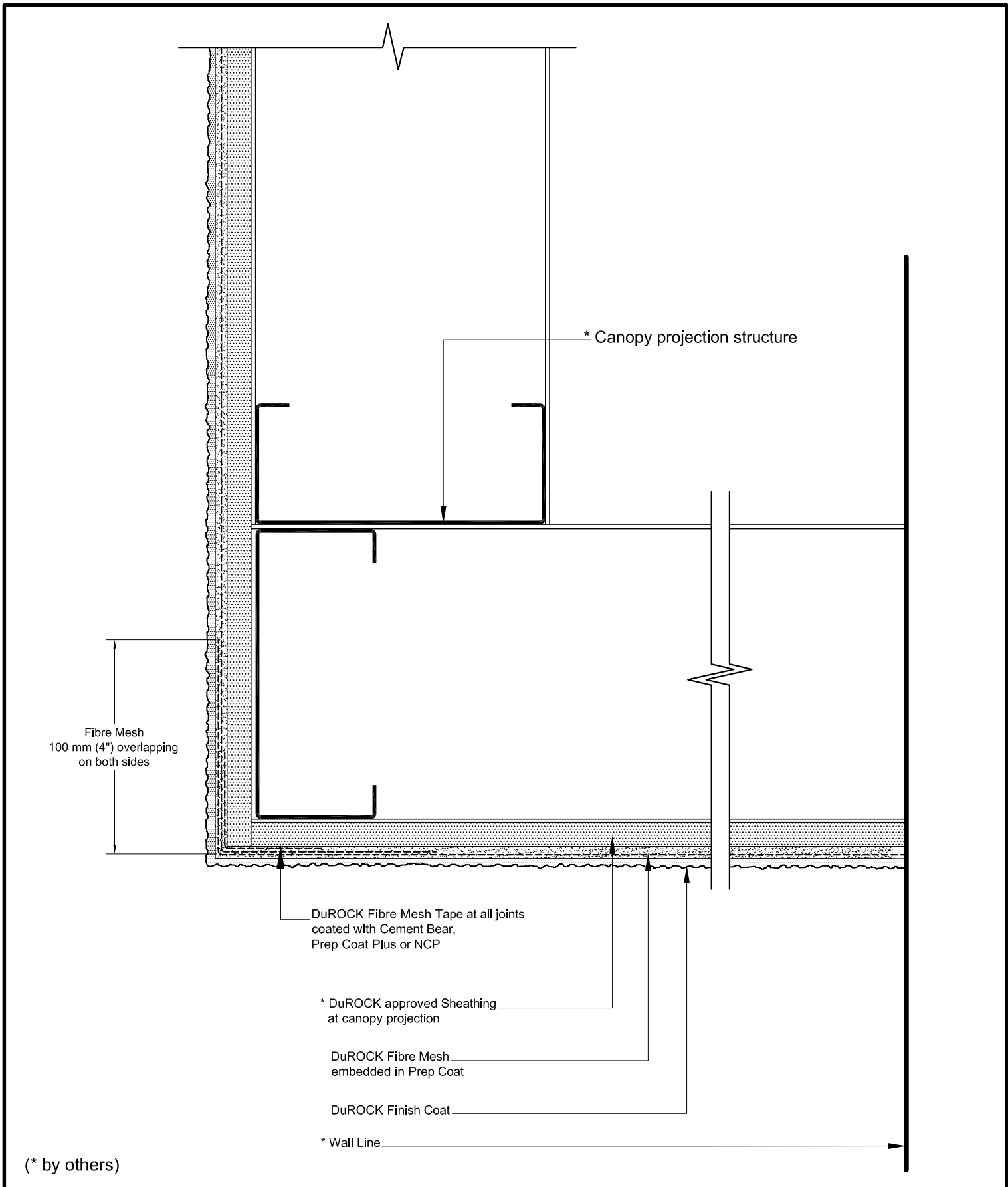
DEFS
 DIRECT APPLIED EXTERIOR FINISH SYSTEM

DRAWING TITLE:
DEFS APPLICATION AT SOFFIT
(VERTICAL SECTION)

DISCLAIMER:
 DuROCK has produced this detail as an architectural guide for the selection of DuRock products and systems. It must be modified and adapted for use in specific projects in particular where governing codes and standards may have additional requirements. DuROCK is not liable for design and workmanship associated with the use of this detail. Please refer to www.durock.com for latest revisions.

LAST REVISION: MAY 2010
 ISSUED: MAR 2007
 DRAWN BY: RIZ
 SCALE: NTS

DEFS
01



(* by others)

DuROCK

Alfacing International Limited

101-B ROYTEC ROAD
WOODBRIDGE, ONTARIO
TEL : (905) 856-0133, FAX : (905) 856-9654
www.durock.com

ARCHITECTURAL FINISHING SYSTEMS

DEFS
DIRECT APPLIED EXTERIOR FINISH SYSTEM

DRAWING TITLE:

**DEFS APPLICATION AT CANOPY
PROJECTION (VERTICAL SECTION)**

DISCLAIMER:
DuROCK has produced this detail as an architectural guide for the selection of DuRock products and systems. It must be modified and adapted for use in specific projects in particular where governing codes and standards may have additional requirements. DuROCK is not liable for design and workmanship associated with the use of this detail. Please refer to www.durock.com for latest revisions.

LAST REVISE: MAY 2010

ISSUED: MAR 2007

DRAWN BY: RIZ

SCALE: NTS

**DEFS
02**