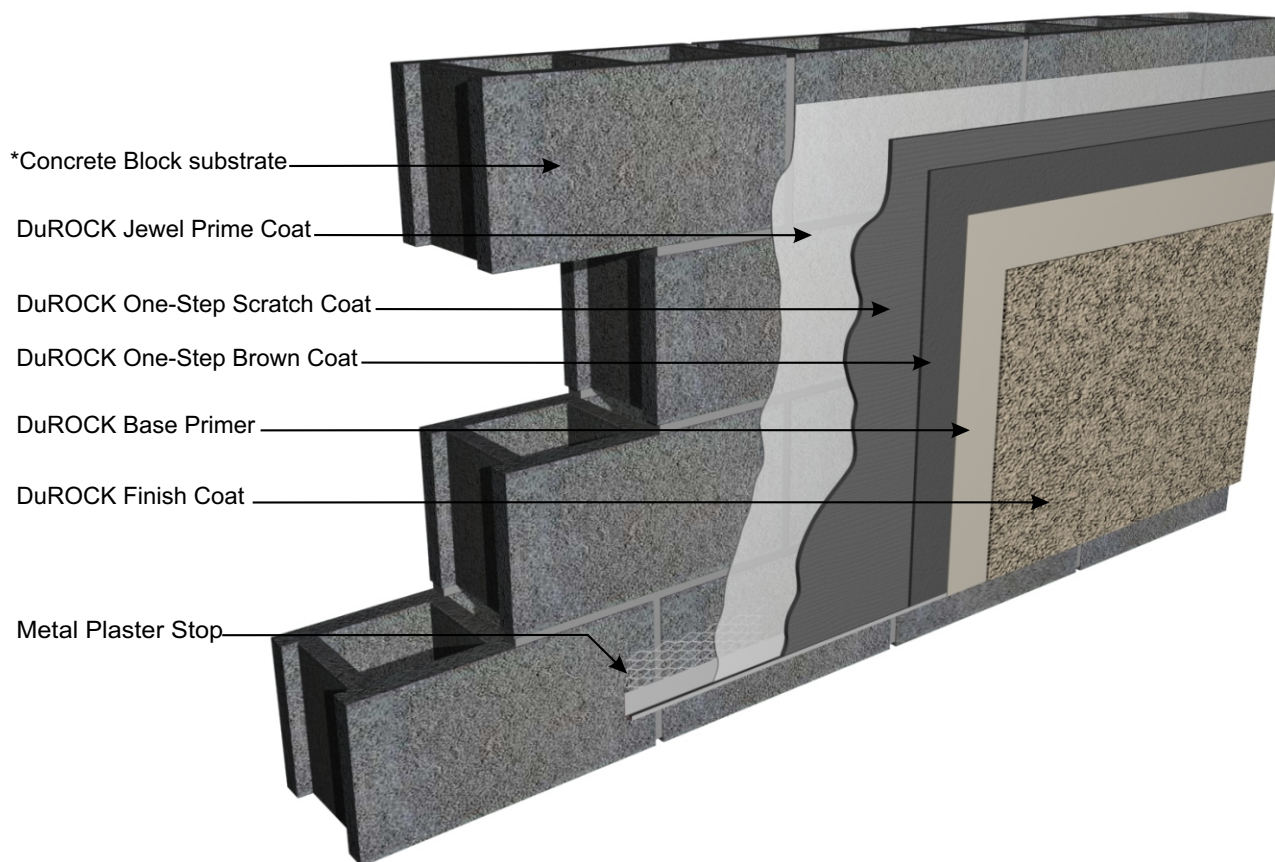


DuROCK Stucco Plus

Polymer-Enhanced Stucco System

DuROCK Stucco System for Mass Wall Substrates

Stucco Plus does not require metal lath when installed over concrete or masonry provided the surface is clean, dry, and free of any material such as paint, wax, or oil that may inhibit adhesion, and provided the substrate is conditioned with DuROCK Jewel Stone Primer prior to application of the base coat. Please refer to the system specification and appropriate details for further information.



(* by others)



Alfacing International Limited
101 B.ROYTEC ROAD, WOODBRIDGE, ON, L4L 8A9
TEL: (905) 856-0133, FAX: (905) 856-9654
www.durock.com

ARCHITECTURAL FINISHING SYSTEMS

This detail complements the corresponding system specification and illustrates the system configuration for the depicted construction. Visit www.durock.com for the latest revisions and contact DuROCK for project-specific details to suit conditions other than those depicted. DuRock assumes no liability for the architecture, design, engineering, or workmanship of any project.

STUCCO-PLUS

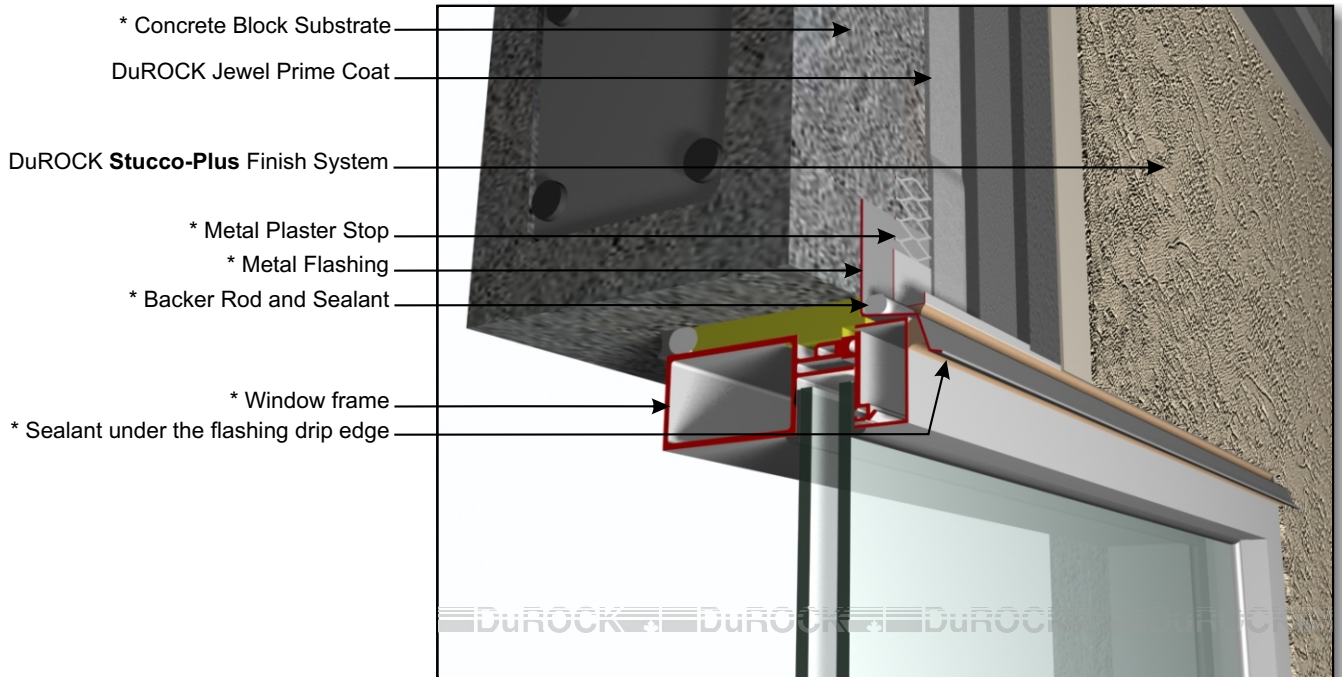
Revision 01: June 2017

Issued: Aug 2016

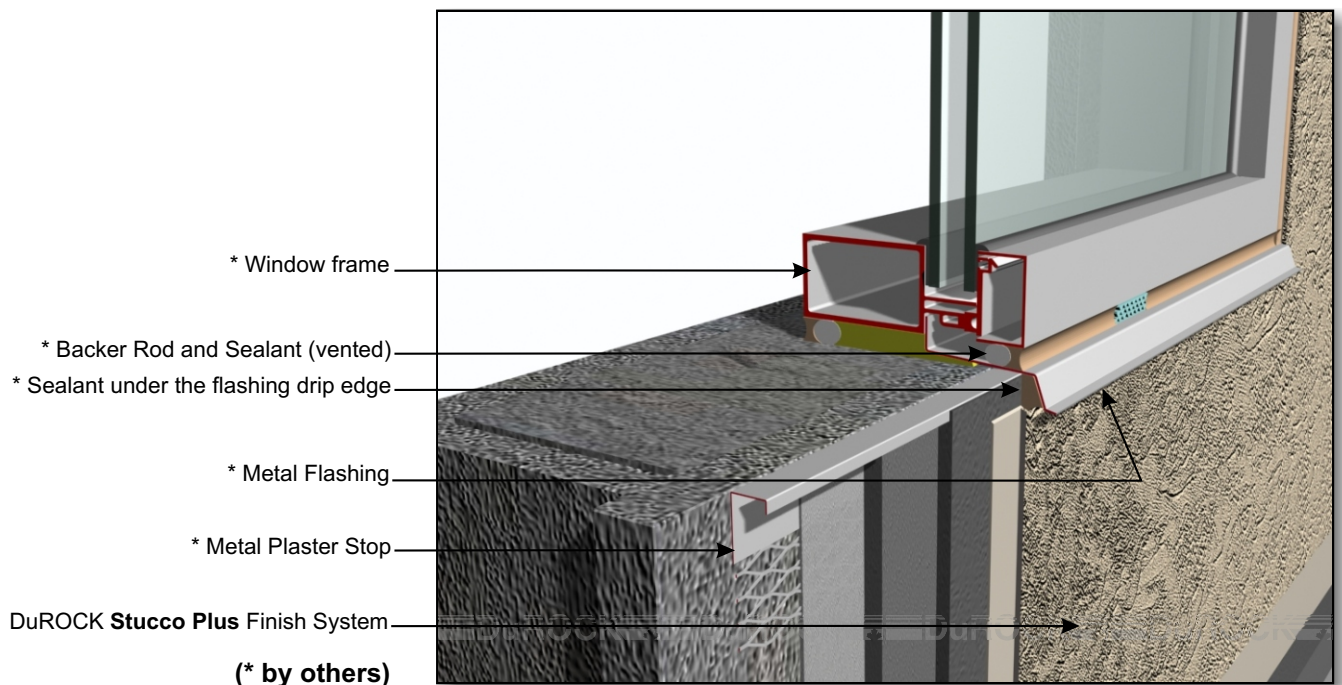
COVER

DuROCK Stucco Plus

Polymer-Enhanced Stucco System



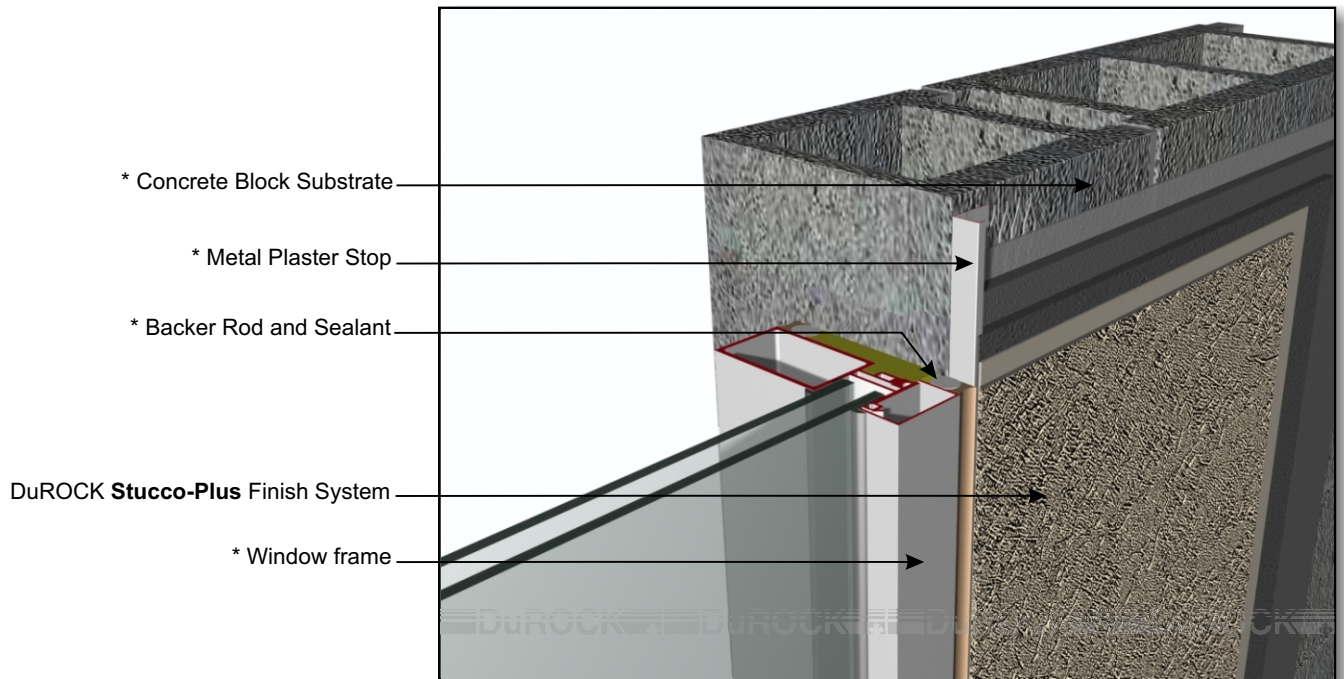
STUCCO PLUS (01)
WINDOW HEADER DETAIL



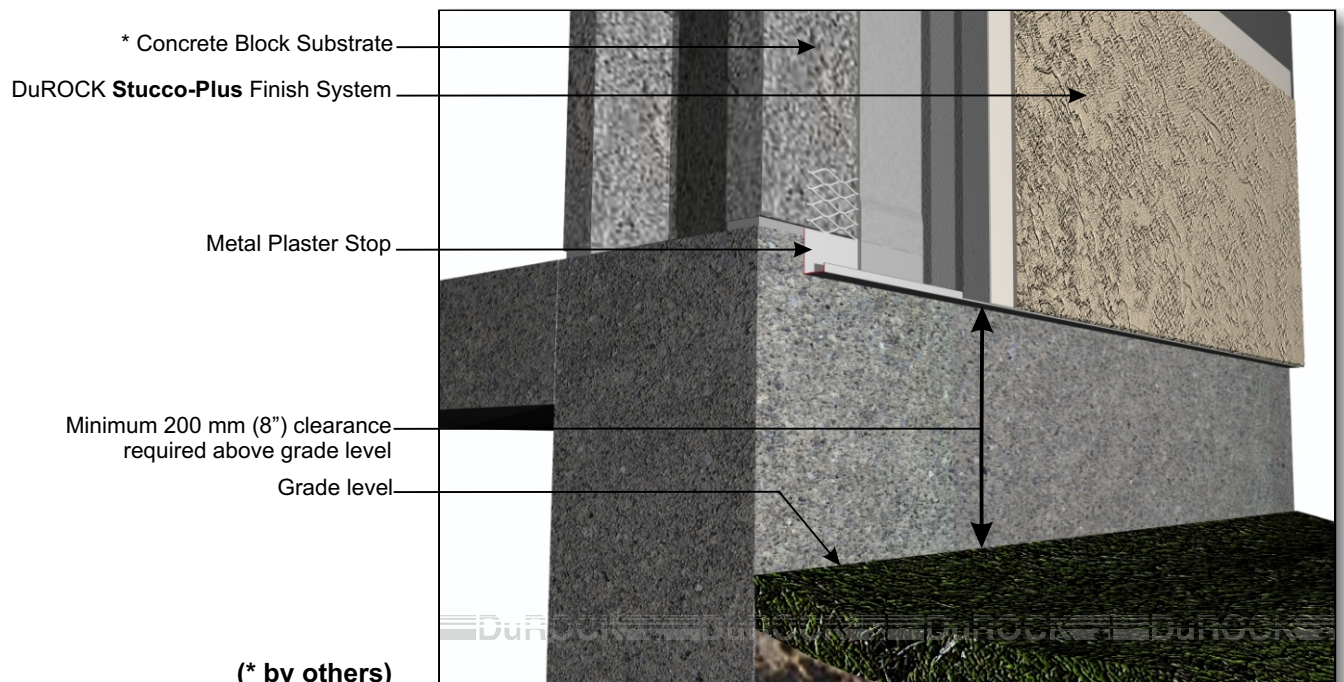
STUCCO PLUS (02)
WINDOW SILL DETAIL

DuROCK Stucco Plus

Polymer-Enhanced Stucco System



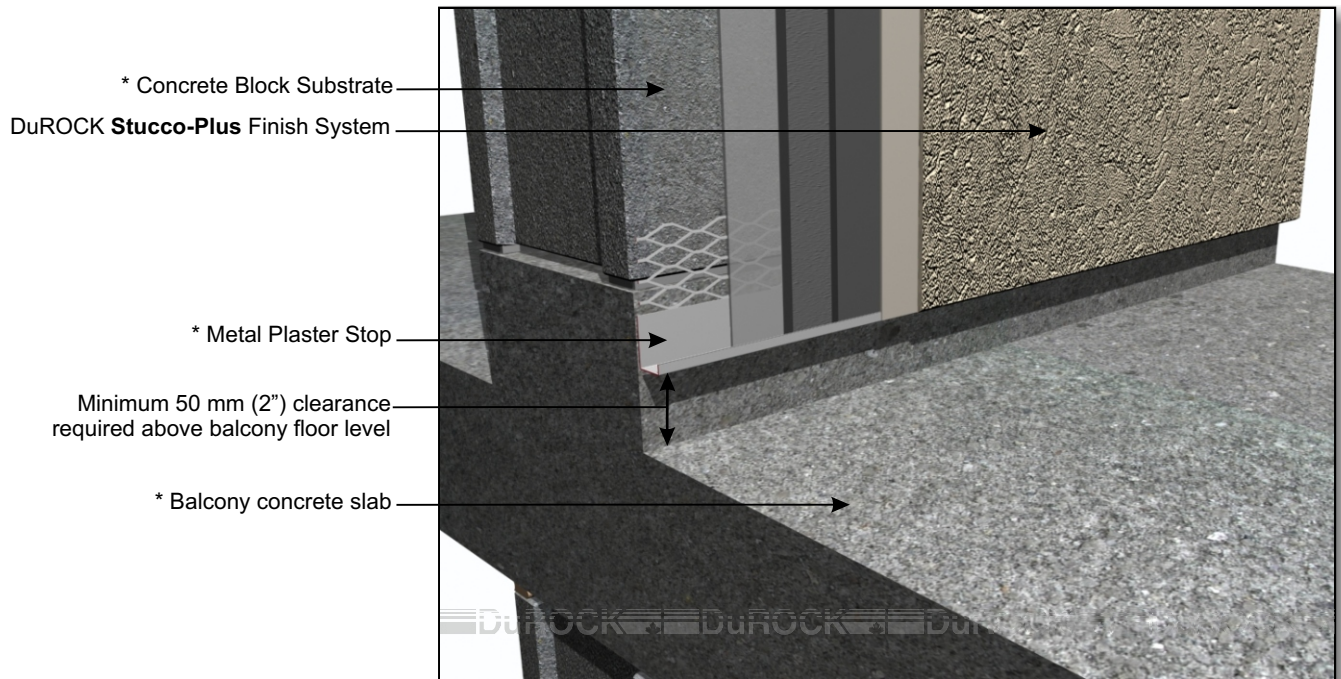
STUCCO PLUS (03)
WINDOW JAMB DETAIL



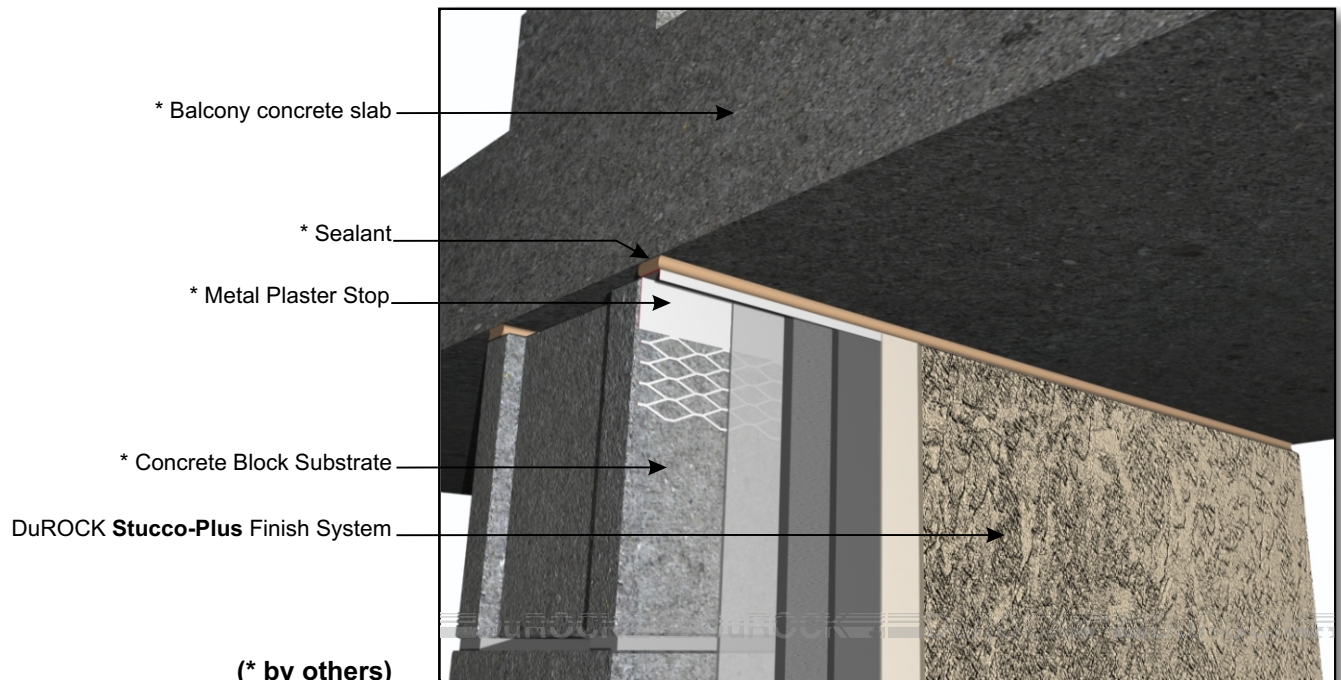
STUCCO PLUS (04)
TERMINATION AT GRADE

DuROCK Stucco Plus

Polymer-Enhanced Stucco System



STUCCO PLUS (05)
TERMINATION AT BALCONY (ABOVE SLAB)

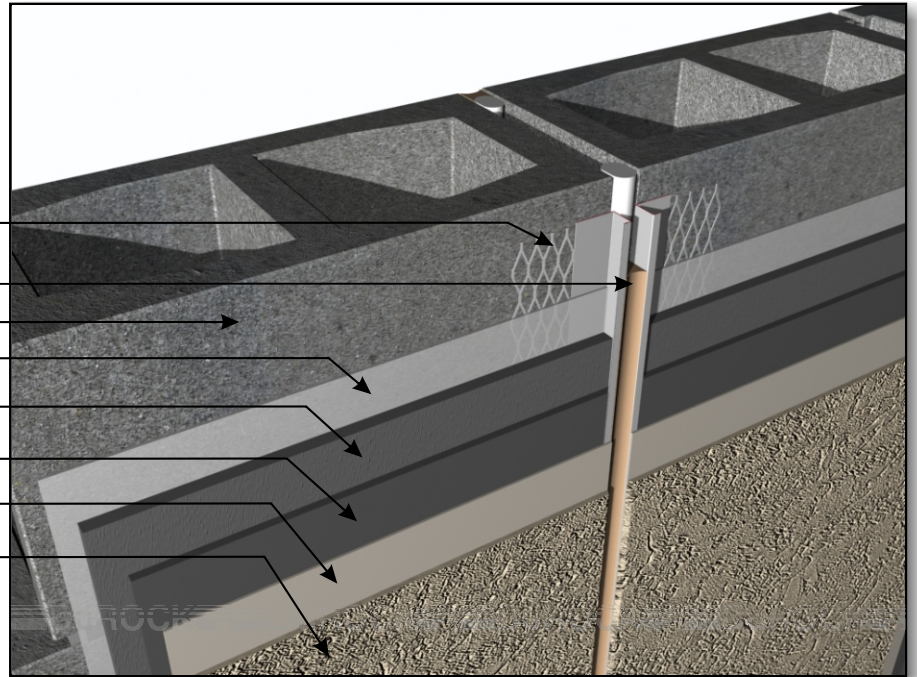


STUCCO PLUS (05A)
TERMINATION AT BALCONY (BELOW SLAB)

DuROCK Stucco Plus

Polymer-Enhanced Stucco System

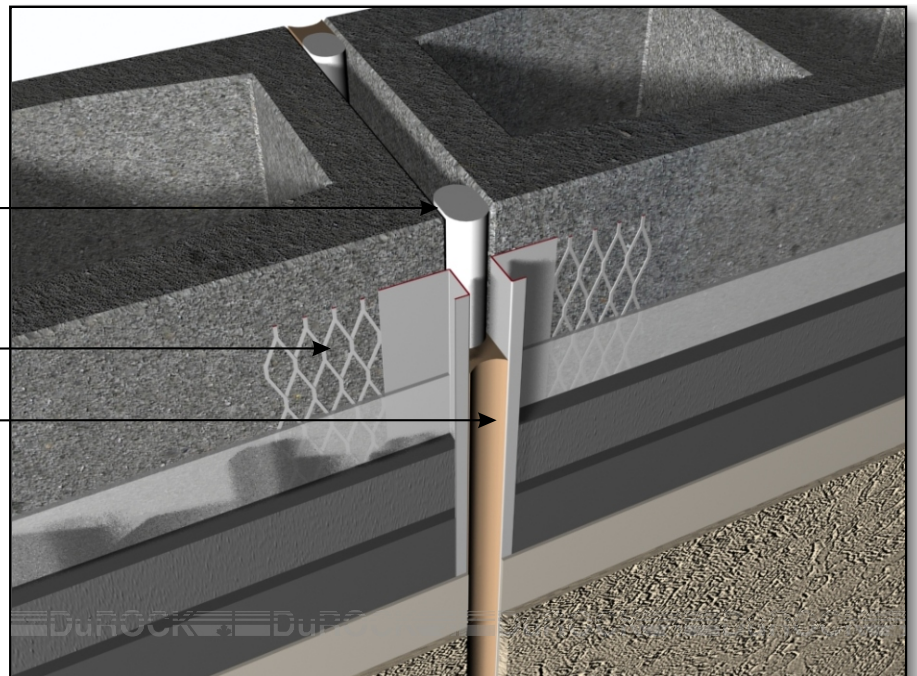
- * Metal Plaster Stop
at both edges of block wall joint
- * Backer Rod and Sealant
- * Concrete Block Substrate
- DuROCK Jewel Prime Coat
- DuROCK One-Step Scratch Coat
- DuROCK One-Step Brown Coat
- DuROCK Base Primer
- DuROCK Finish Coat



STUCCO PLUS (06)
VERTICAL JOINT (VIEW A)

- * Backer Rod at wall joint
- * Metal Plaster Stop
at both edges of block wall joint
- * Sealant

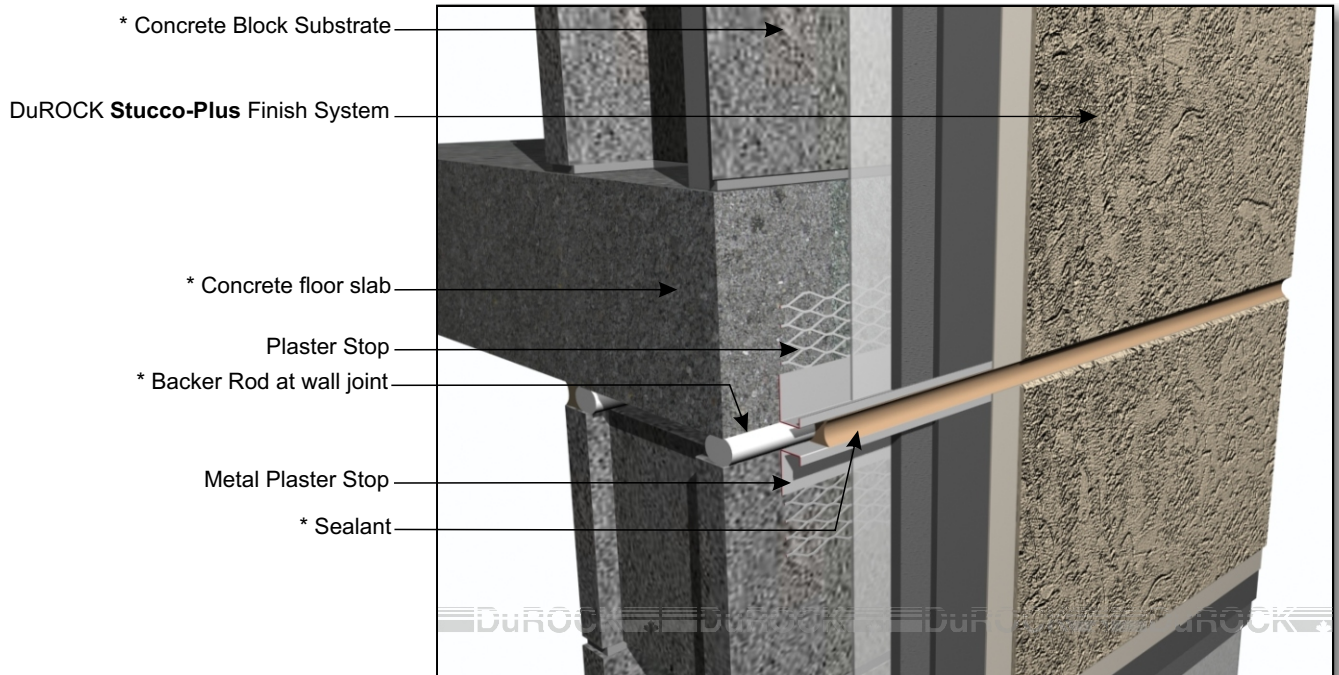
(* by others)



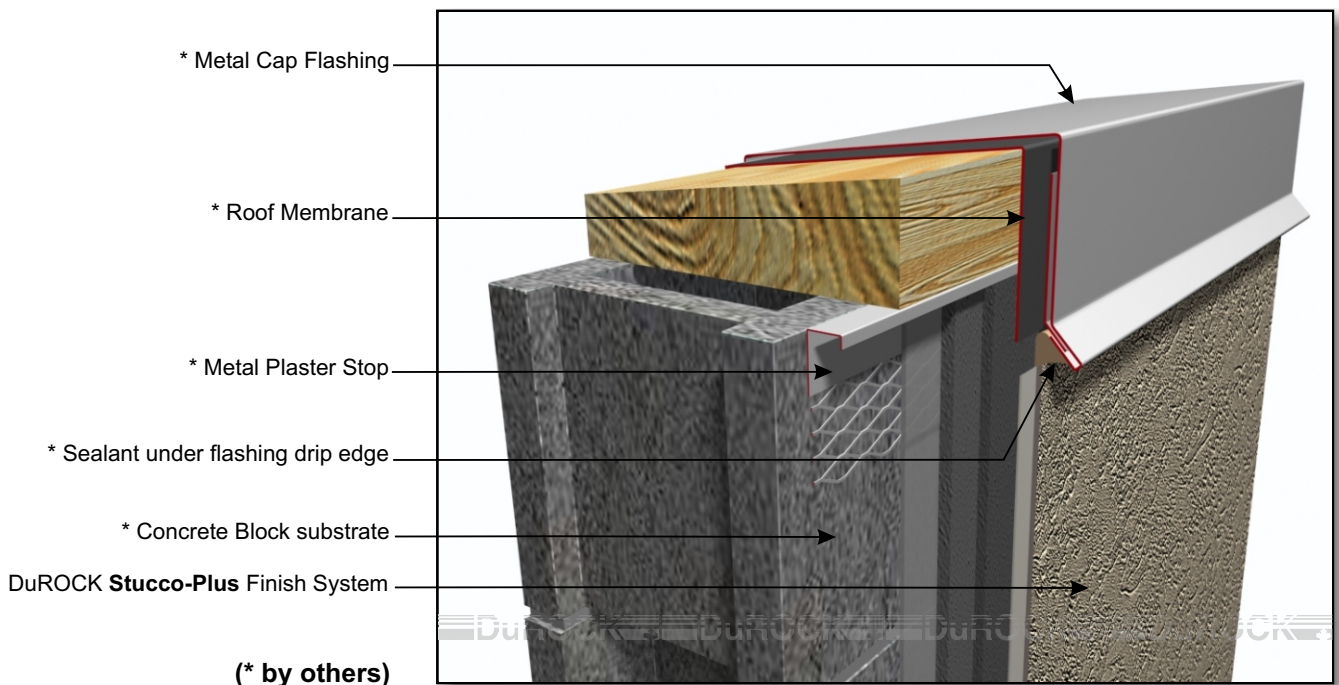
STUCCO PLUS (06A)
VERTICAL EXPANSION JOINT (VIEW B)

DuROCK Stucco Plus

Polymer-Enhanced Stucco System



STUCCO PLUS (07)
HORIZONTAL EXPANSION JOINT



STUCCO PLUS (08)
TERMINATION AT ROOF TOP PARAPET