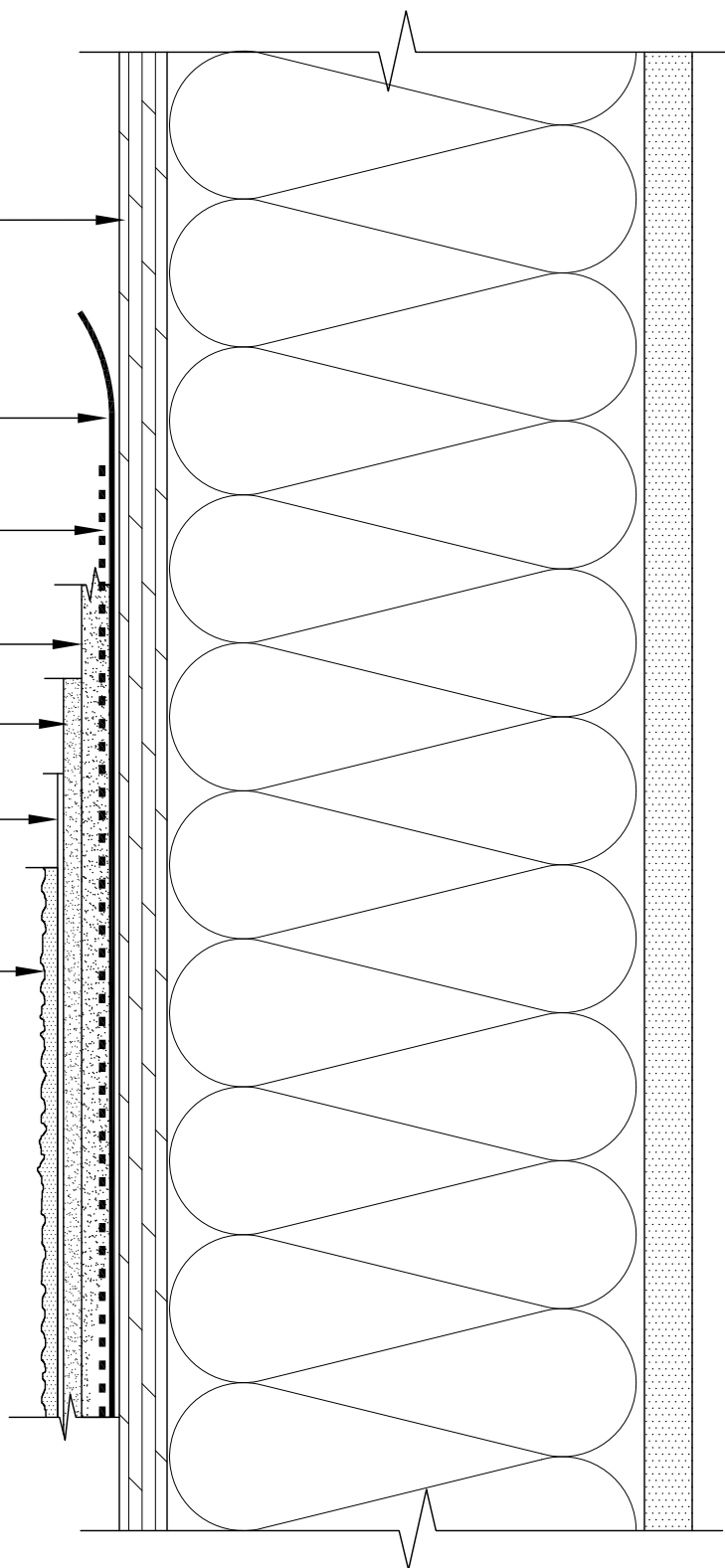


- * Wood Sheathing
- * Sheathing Membrane
- Metal Lath
(Mechanically fastened to wood sheathing)
- DuROCK One-Step Scratch Coat
- DuROCK One-Step Brown Coat
- DuROCK Base Primer
(matching to finish coat colour)
- DuROCK Finish Coat



(* by others)

DuROCK STUCCO-PLUS FOR SHEATHING SUBSTRATES

DRAWING TITLE:

STUCCO-PLUS STANDARD SECTION DETAIL

This detail complements the corresponding system specification and illustrates the system configuration for the depicted construction. Visit www.durock.com for the latest revisions and contact DuROCK for project-specific details to suit conditions other than those depicted. DuROCK assumes no liability for the architecture, design, engineering, or workmanship of any project.

DuROCK
Alfacing International Limited
101-B ROYTEC ROAD
WOODBIDGE, ONTARIO
TEL : (905) 856-0133, FAX : (905) 856-9654
www.durock.com
ARCHITECTURAL FINISHING SYSTEMS

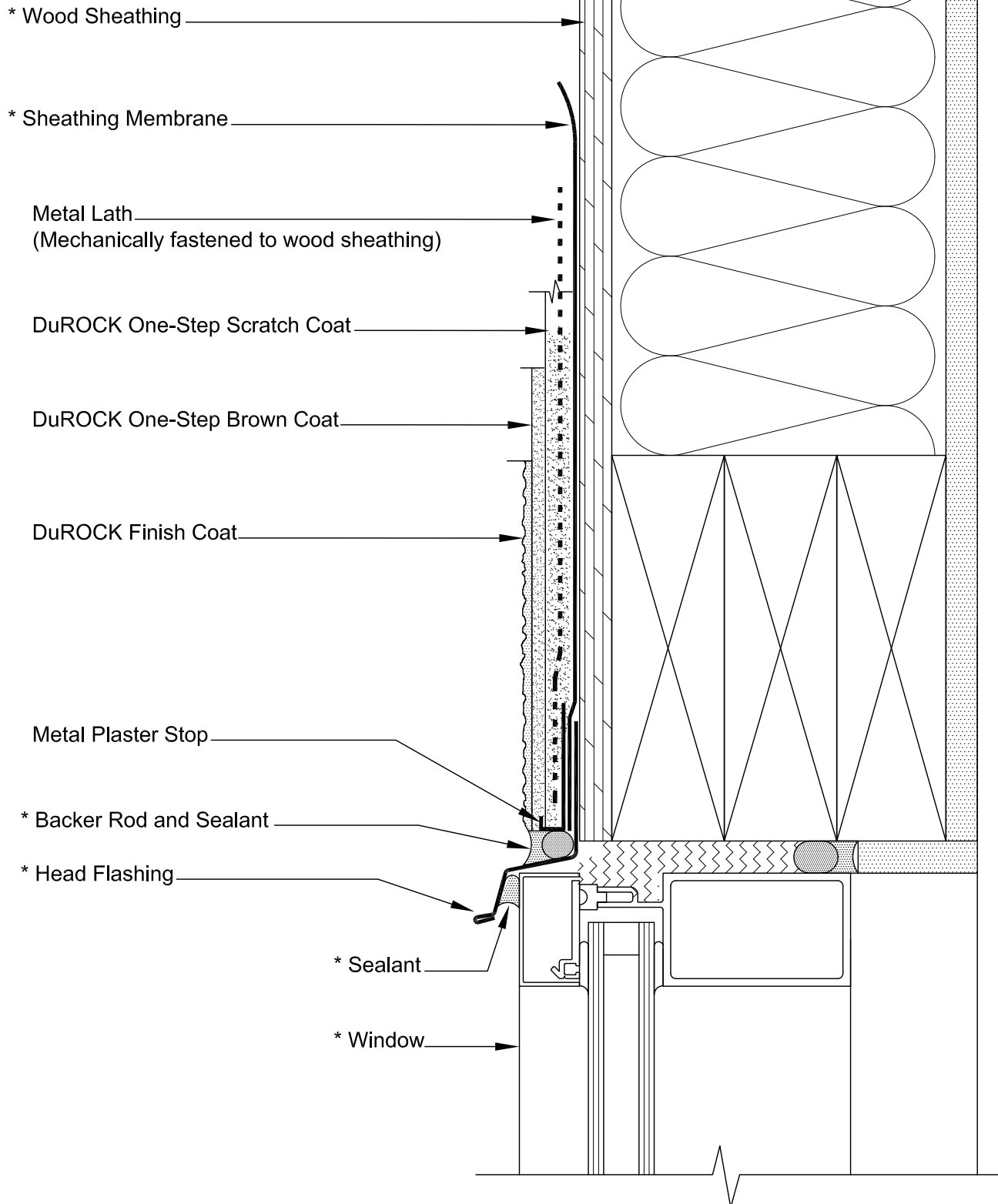
LAST REVISED: JUNE 2017

ISSUED: MAY 2007

DRAWN BY: RIZ

SCALE: NTS

STUCCO-PLUS
COVER



(* by others)

DuROCK STUCCO-PLUS FOR SHEATHING SUBSTRATES

DRAWING TITLE:

WINDOW HEADER DETAIL

This detail complements the corresponding system specification and illustrates the system configuration for the depicted construction. Visit www.durock.com for the latest revisions and contact DuROCK for project-specific details to suit conditions other than those depicted. DuROCK assumes no liability for the architecture, design, engineering, or workmanship of any project.

DuROCK
Alfacing International Limited
101-B ROYTEC ROAD
WOODBIDGE, ONTARIO
TEL : (905) 856-0133, FAX : (905) 856-9654
www.durock.com
ARCHITECTURAL FINISHING SYSTEMS

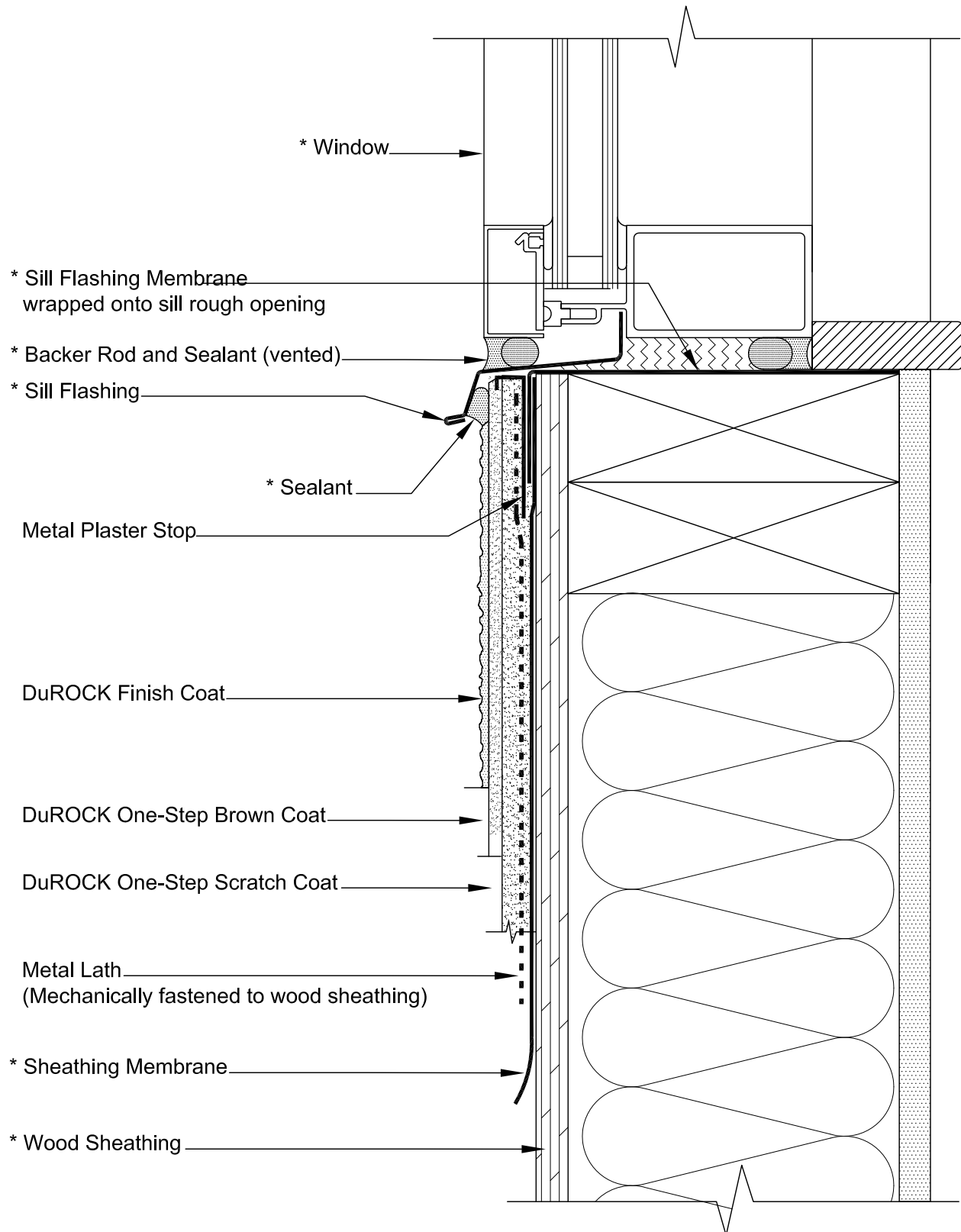
LAST REVISED: JUNE 2017

ISSUED: MAY 2007

DRAWN BY: RIZ

SCALE: NTS

STUCCO-PLUS
D01



(* by others)

DuROCK STUCCO-PLUS FOR SHEATHING SUBSTRATES

DRAWING TITLE:

WINDOW SILL DETAIL

This detail complements the corresponding system specification and illustrates the system configuration for the depicted construction. Visit www.durock.com for the latest revisions and contact DuROCK for project-specific details to suit conditions other than those depicted. DuROCK assumes no liability for the architecture, design, engineering, or workmanship of any project.

DuROCK
Alfacing International Limited
101-B ROYTEC ROAD
WOODBIDGE, ONTARIO
TEL : (905) 856-0133, FAX : (905) 856-9654
www.durock.com
ARCHITECTURAL FINISHING SYSTEMS

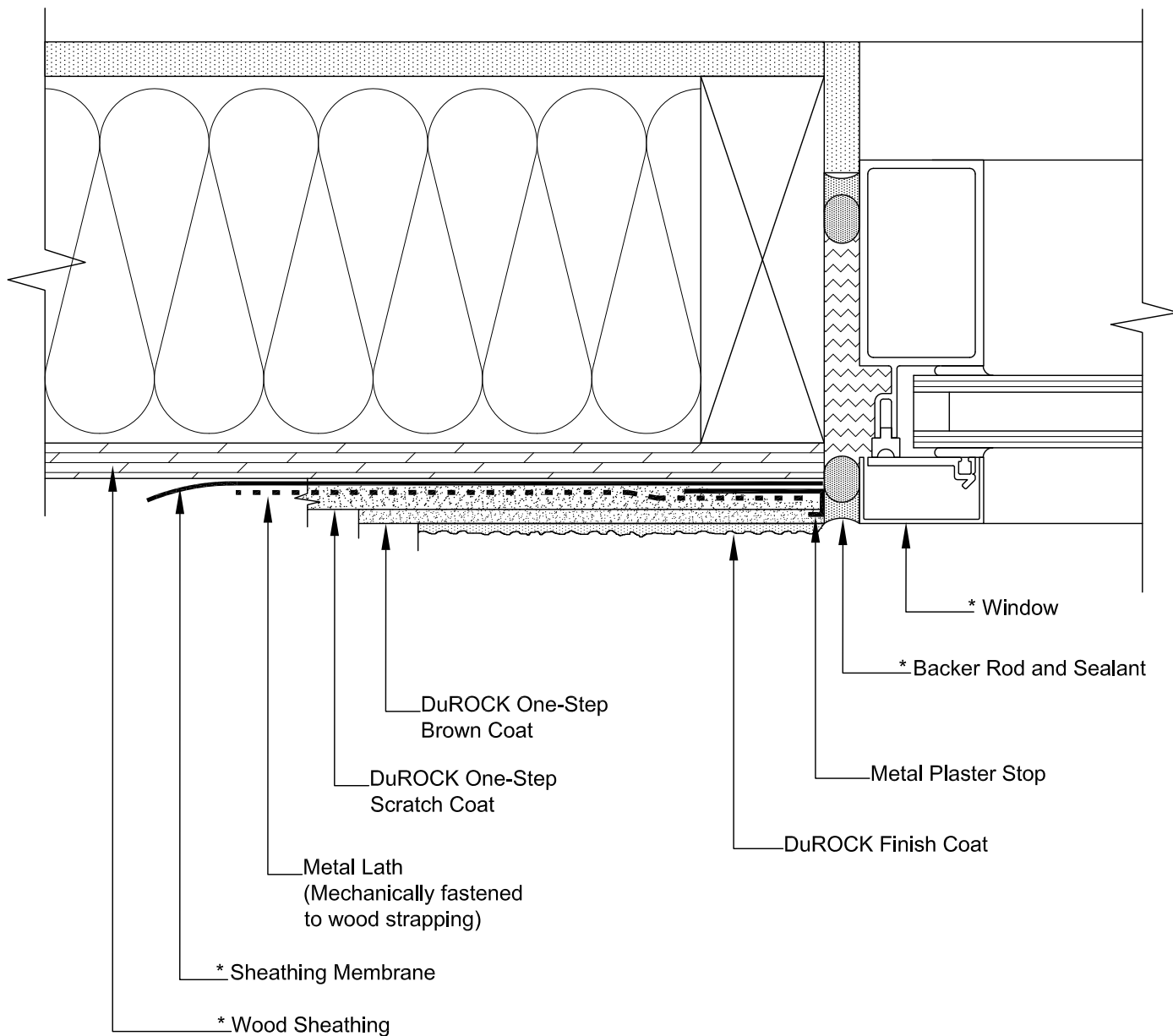
LAST REVISED: JUNE 2017

ISSUED: MAY 2007

DRAWN BY: RIZ

SCALE: NTS

STUCCO-PLUS
D02



(* by others)

DuROCK STUCCO-PLUS FOR SHEATHING SUBSTRATES

DRAWING TITLE:

WINDOW JAMB (PLAN DETAIL)

This detail complements the corresponding system specification and illustrates the system configuration for the depicted construction. Visit www.durock.com for the latest revisions and contact DuROCK for project-specific details to suit conditions other than those depicted. DuROCK assumes no liability for the architecture, design, engineering, or workmanship of any project.

DuROCK
Alfacing International Limited
101-B ROYTEC ROAD
WOODBIDGE, ONTARIO
TEL : (905) 856-0133, FAX : (905) 856-9654
www.durock.com
ARCHITECTURAL FINISHING SYSTEMS

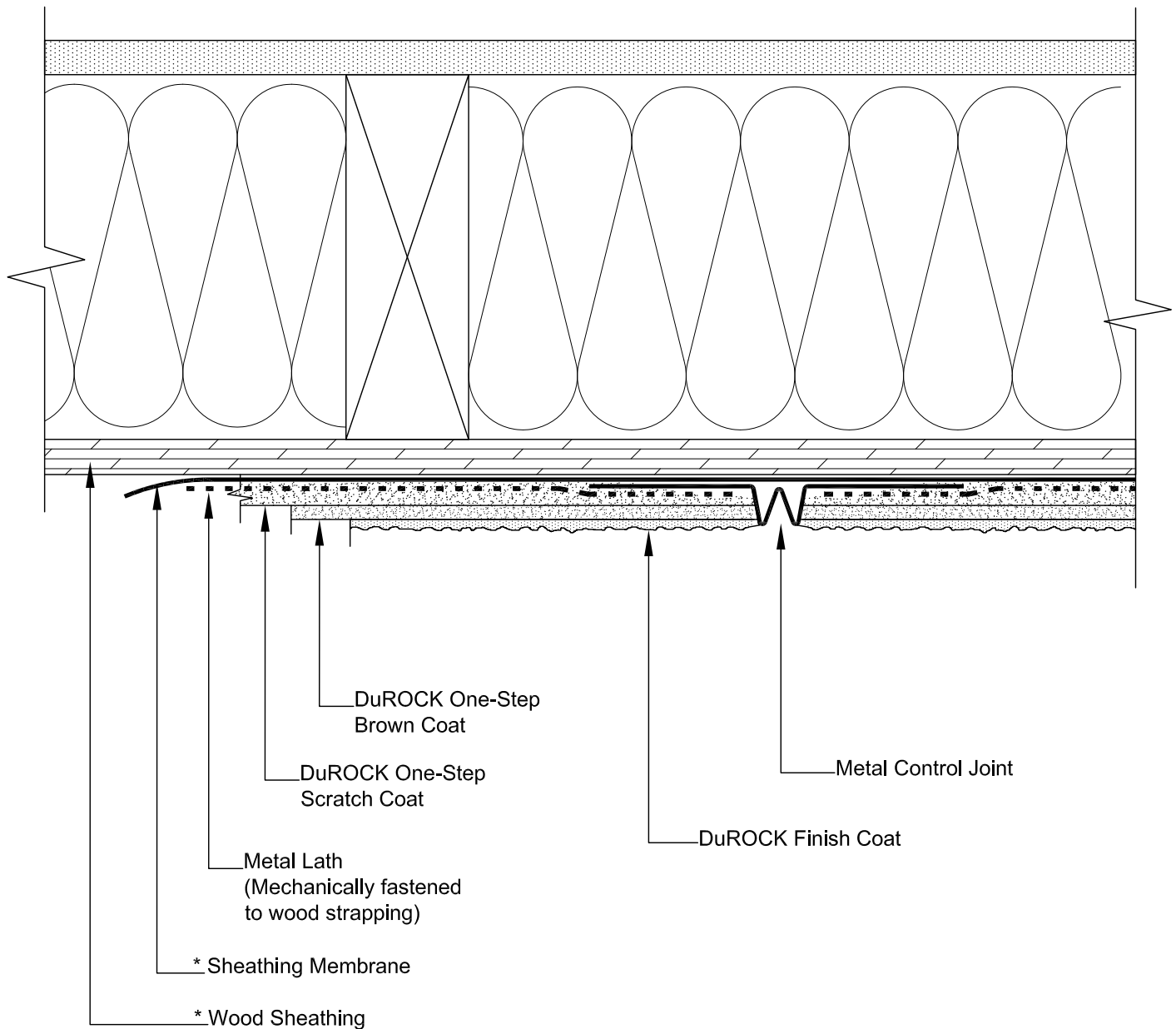
LAST REVISED: JUNE 2017

ISSUED: MAY 2007

DRAWN BY: RIZ

SCALE: NTS

STUCCO-PLUS
D03



(* by others)

DuROCK STUCCO-PLUS FOR SHEATHING SUBSTRATES

DRAWING TITLE:

CONTROL JOINT (PLAN DETAIL)

This detail complements the corresponding system specification and illustrates the system configuration for the depicted construction. Visit www.durock.com for the latest revisions and contact DuROCK for project-specific details to suit conditions other than those depicted. DuROCK assumes no liability for the architecture, design, engineering, or workmanship of any project.

DuROCK
Alfacing International Limited
101-B ROYTEC ROAD
WOODBIDGE, ONTARIO
TEL : (905) 856-0133, FAX : (905) 856-9654
www.durock.com
ARCHITECTURAL FINISHING SYSTEMS

LAST REVISED: JUNE 2017
ISSUED: MAY 2007
DRAWN BY: RIZ
SCALE: NTS
STUCCO-PLUS
D04

* Wood Sheathing

* Sheathing Membrane

Metal Lath
(Mechanically fastened to wood sheathing)

DuROCK One-Step Scratch Coat

DuROCK One-Step Brown Coat

DuROCK Finish Coat

Metal Plaster Stop

* Backer Rod and Sealant

* Metal Flashing

Minimum 200mm (8")
clearance required
above grade level

T.O. GRADE

(* by others)

DuROCK STUCCO-PLUS FOR SHEATHING SUBSTRATES

DRAWING TITLE:

TERMINATION AT GRADE

This detail complements the corresponding system specification and illustrates the system configuration for the depicted construction. Visit www.durock.com for the latest revisions and contact DuROCK for project-specific details to suit conditions other than those depicted. DuROCK assumes no liability for the architecture, design, engineering, or workmanship of any project.

DuROCK
Alfacing International Limited
101-B ROYTEC ROAD
WOODBIDGE, ONTARIO
TEL : (905) 856-0133, FAX : (905) 856-9654
www.durock.com
ARCHITECTURAL FINISHING SYSTEMS

LAST REVISED: JUNE 2017

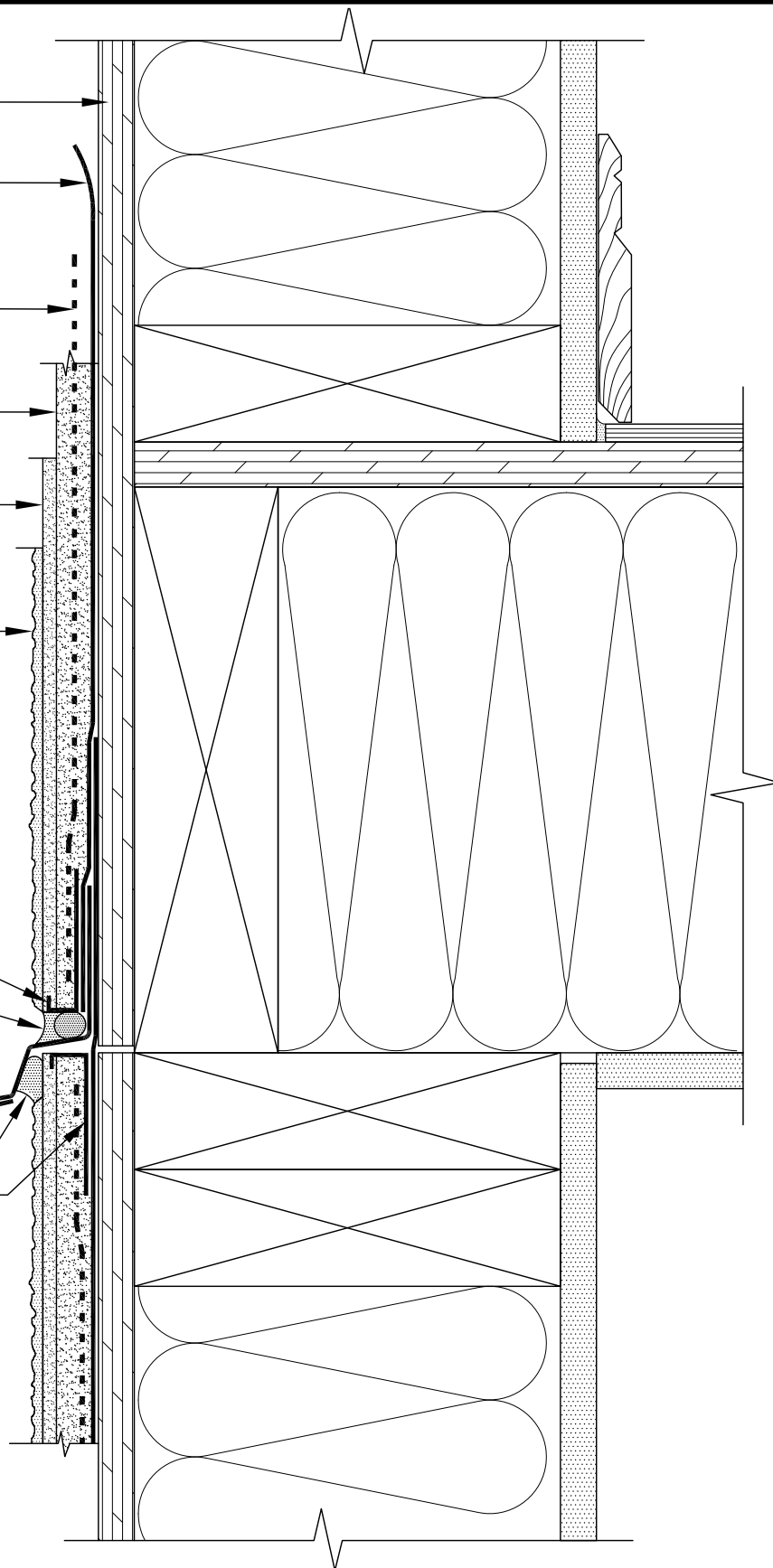
ISSUED: MAY 2007

DRAWN BY: RIZ

SCALE: NTS

STUCCO-PLUS
D05

- * Wood Sheathing
- * Sheathing Membrane
- Metal Lath
(Mechanically fastened to wood sheathing)
- DuROCK One-Step Scratch Coat
- DuROCK One-Step Brown Coat
- DuROCK Finish Coat
- Metal Plaster Stop
- * Backer Rod and Sealant
- * Metal Flashing
- * Sealant under the flashing drip edge
- Metal Plaster Stop



(* by others)

DuROCK STUCCO-PLUS FOR SHEATHING SUBSTRATES

DRAWING TITLE:

HORIZONTAL EXPANSION JOINT

This detail complements the corresponding system specification and illustrates the system configuration for the depicted construction. Visit www.durock.com for the latest revisions and contact DuROCK for project-specific details to suit conditions other than those depicted. DuROCK assumes no liability for the architecture, design, engineering, or workmanship of any project.

DuROCK
Alfacing International Limited
101-B ROYTEC ROAD
WOODBIDGE, ONTARIO
TEL : (905) 856-0133, FAX : (905) 856-9654
www.durock.com
ARCHITECTURAL FINISHING SYSTEMS

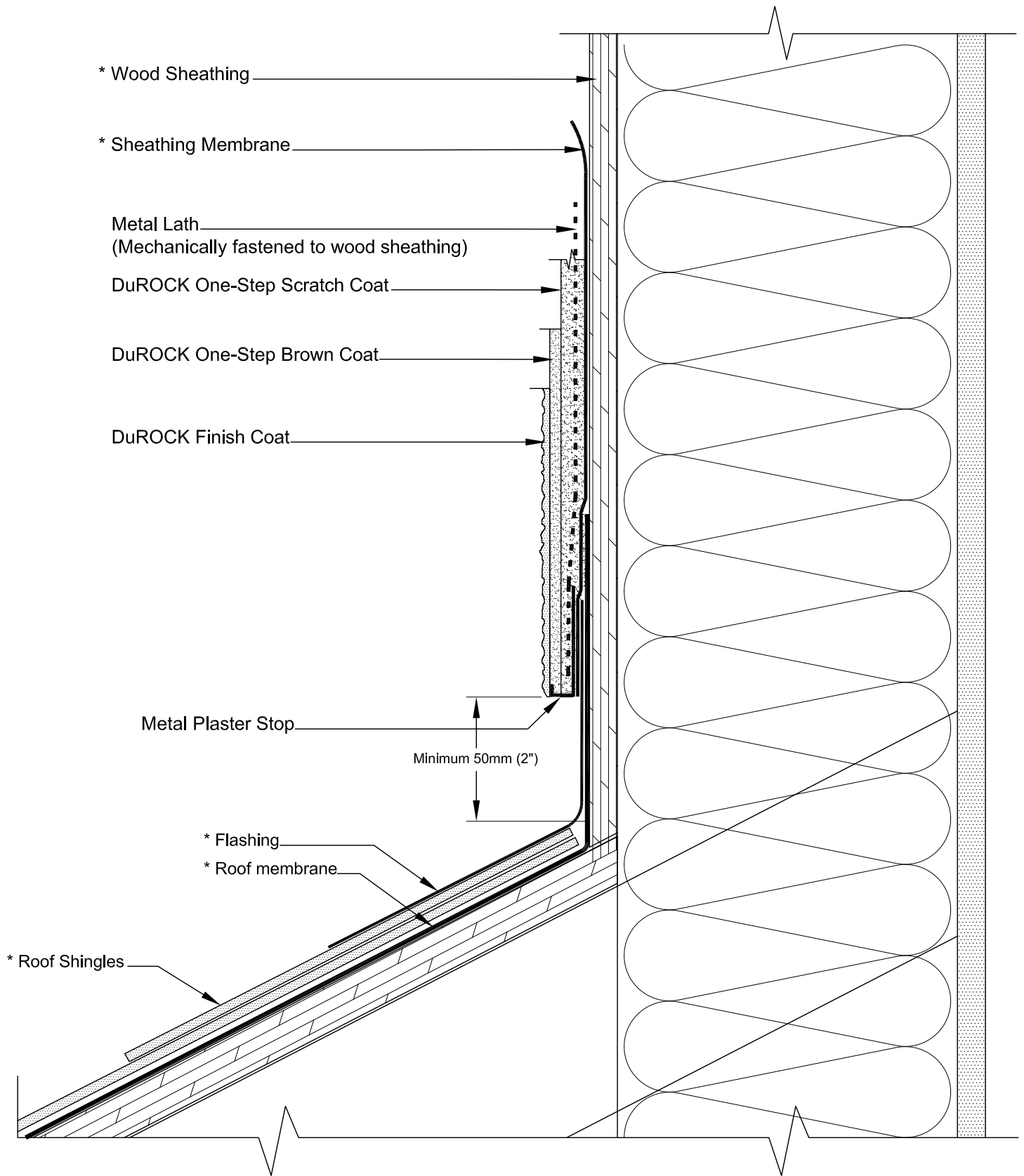
LAST REVISED: JUNE 2017

ISSUED: MAY 2007

DRAWN BY: RIZ

SCALE: NTS

STUCCO-PLUS
D06



DuROCK STUCCO-PLUS FOR SHEATHING SUBSTRATES

DRAWING TITLE:

TERMINATION AT SLOPED ROOF

This detail complements the corresponding system specification and illustrates the system configuration for the depicted construction. Visit www.durock.com for the latest revisions and contact DuROCK for project-specific details to suit conditions other than those depicted. DuROCK assumes no liability for the architecture, design, engineering, or workmanship of any project.

DuROCK
Alfacing International Limited
101-B ROYTEC ROAD
WOODBIDGE, ONTARIO
TEL : (905) 856-0133, FAX : (905) 856-9654
www.durock.com
ARCHITECTURAL FINISHING SYSTEMS

LAST REVISED: JUNE 2017

ISSUED: MAY 2007

DRAWN BY: RIZ

SCALE: NTS

STUCCO-PLUS
D07