

\* Concrete Block Wall

DuROCK Jewel Prime Coat

DuROCK One-Step Scratch Coat

DuROCK One-Step Brown Coat

DuROCK Finish Coat

Metal Plaster Stop

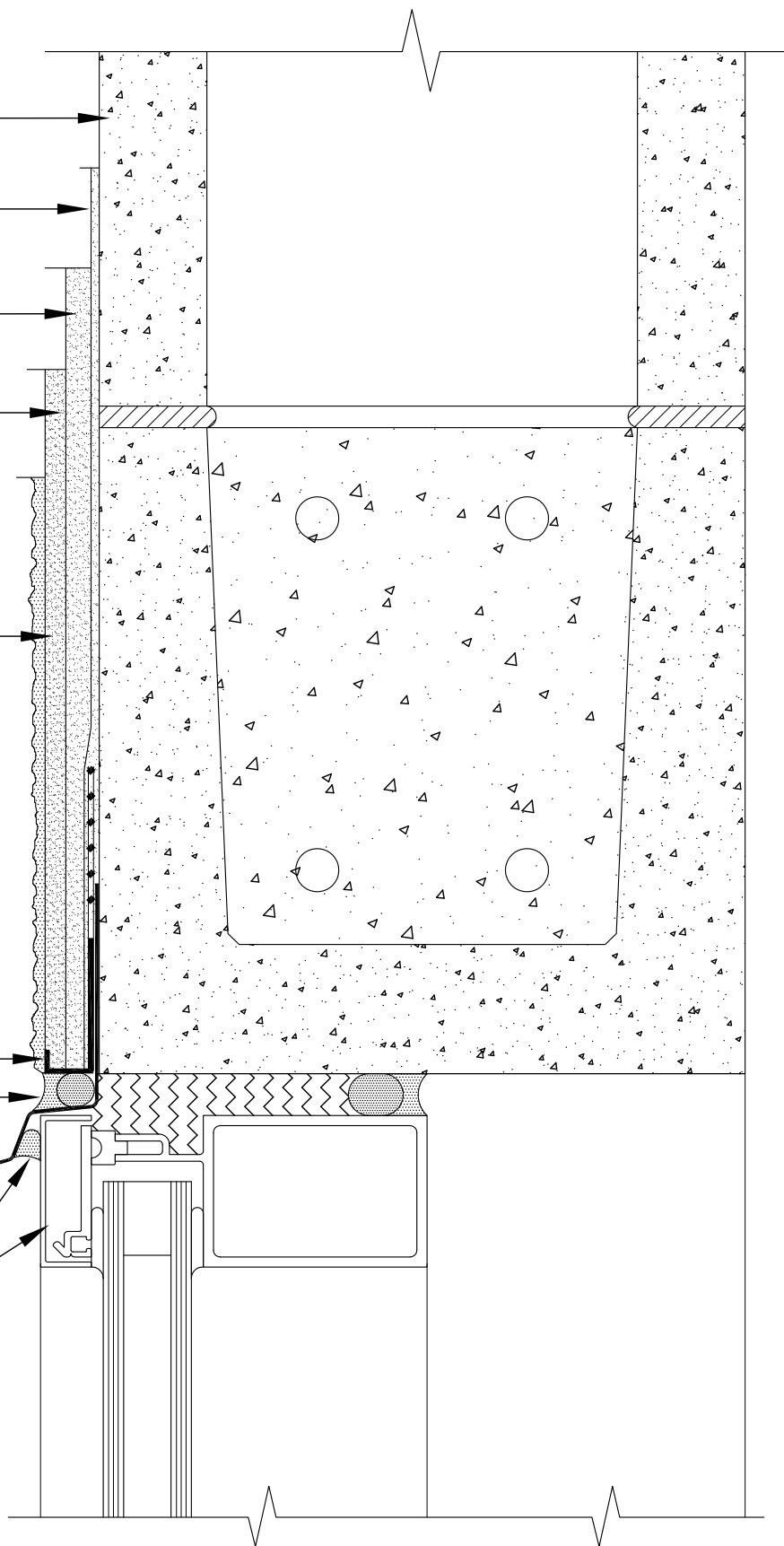
\* Backer Rod and Sealant

\* Metal Flashing

\* Sealant under flashing drip edge

\* Window frame

(\* by others)



## STUCCO-PLUS

(STUCCO-PLUS OVER CONCRETE BLOCK SUBSTRATE)

DRAWING TITLE:

## WINDOW HEADER DETAIL

This detail complements the corresponding system specification and illustrates the system configuration for the depicted construction. Visit [www.durock.com](http://www.durock.com) for the latest revisions and contact DuROCK for project-specific details to suit conditions other than those depicted. DuROCK assumes no liability for the architecture, design, engineering, or workmanship of any project.

**DuROCK**  
Alfacing International Limited  
101-B ROYTEC ROAD  
WOODBIDGE, ONTARIO  
TEL : (905) 856-0133, FAX : (905) 856-9654  
[www.durock.com](http://www.durock.com)  
ARCHITECTURAL FINISHING SYSTEMS

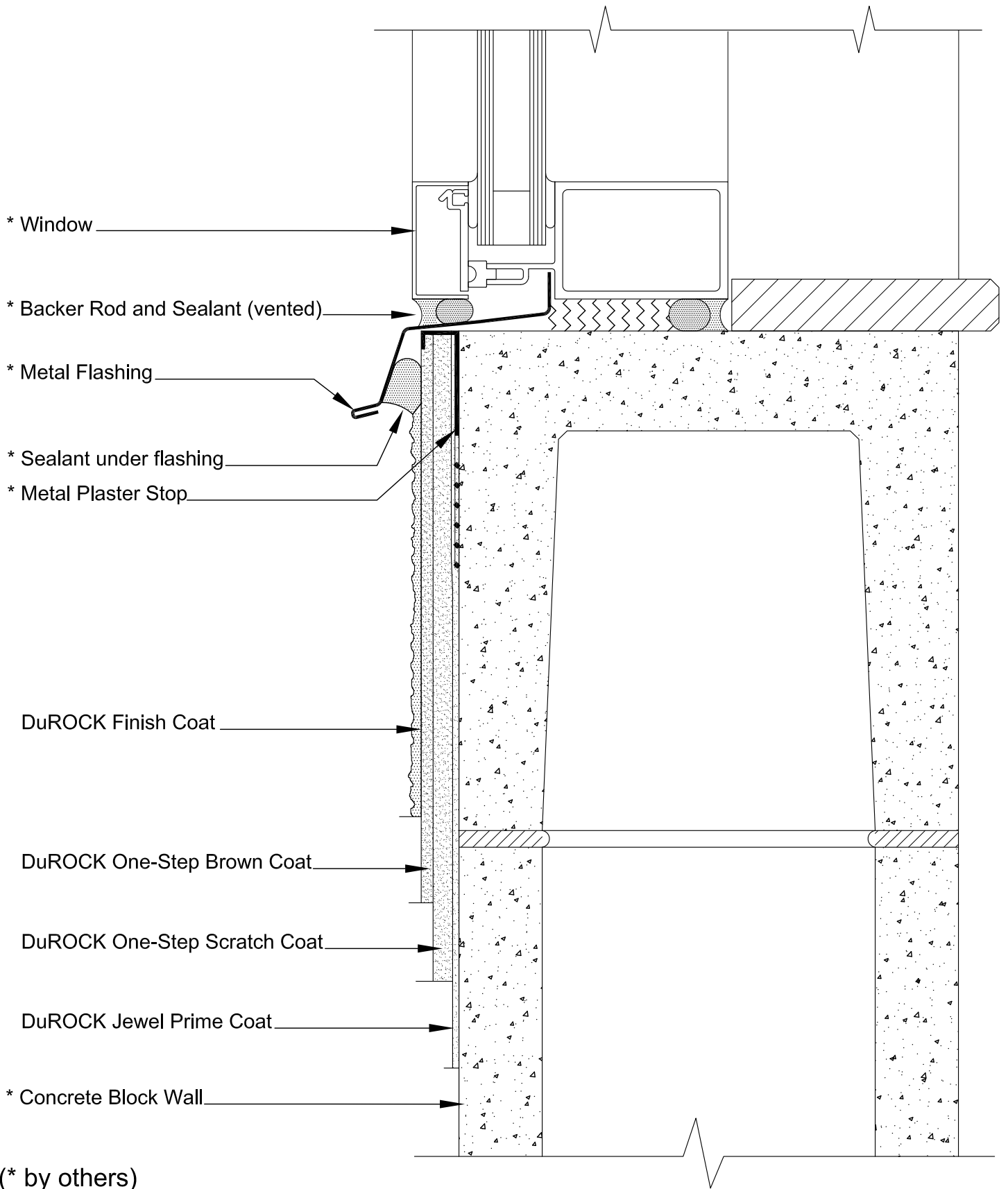
LAST REVISED: JUNE 2017

ISSUED: DEC 2016

DRAWN BY: RIZ

SCALE: NTS

STUCCO-PLUS  
**D01**



**STUCCO-PLUS**  
(STUCCO-PLUS OVER CONCRETE BLOCK SUBSTRATE)

DRAWING TITLE:

**WINDOW SILL DETAIL**

This detail complements the corresponding system specification and illustrates the system configuration for the depicted construction. Visit [www.durock.com](http://www.durock.com) for the latest revisions and contact DuROCK for project-specific details to suit conditions other than those depicted. DuROCK assumes no liability for the architecture, design, engineering, or workmanship of any project.

**DuROCK**  
Alfacing International Limited  
101-B ROYTEC ROAD  
WOODBIDGE, ONTARIO  
TEL : (905) 856-0133, FAX : (905) 856-9654  
[www.durock.com](http://www.durock.com)  
ARCHITECTURAL FINISHING SYSTEMS

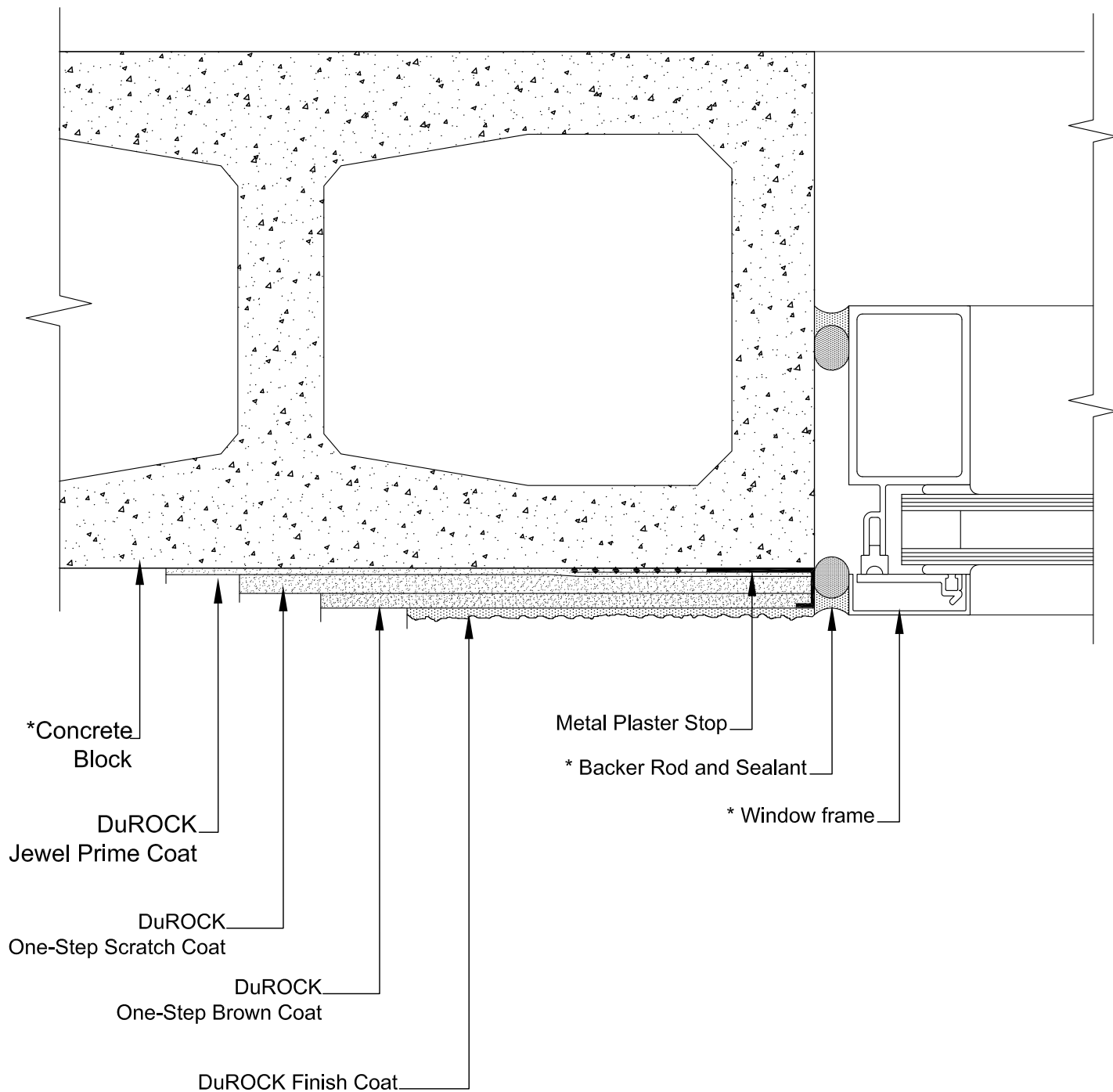
LAST REVISED: JUNE 2017

ISSUED: DEC 2016

DRAWN BY: RIZ

SCALE: NTS

**STUCCO-PLUS**  
**D02**



(\* by others)

## STUCCO-PLUS

(STUCCO-PLUS OVER CONCRETE BLOCK SUBSTRATE)

DRAWING TITLE:

## WINDOW JAMB (PLAN DETAIL)

This detail complements the corresponding system specification and illustrates the system configuration for the depicted construction. Visit [www.durock.com](http://www.durock.com) for the latest revisions and contact DuROCK for project-specific details to suit conditions other than those depicted. DuROCK assumes no liability for the architecture, design, engineering, or workmanship of any project.

**DuROCK**  
**Alfacing International Limited**  
 101-B ROYTEC ROAD  
 WOODBRIDGE, ONTARIO  
 TEL : (905) 856-0133, FAX : (905) 856-9654  
[www.durock.com](http://www.durock.com)  
 ARCHITECTURAL FINISHING SYSTEMS

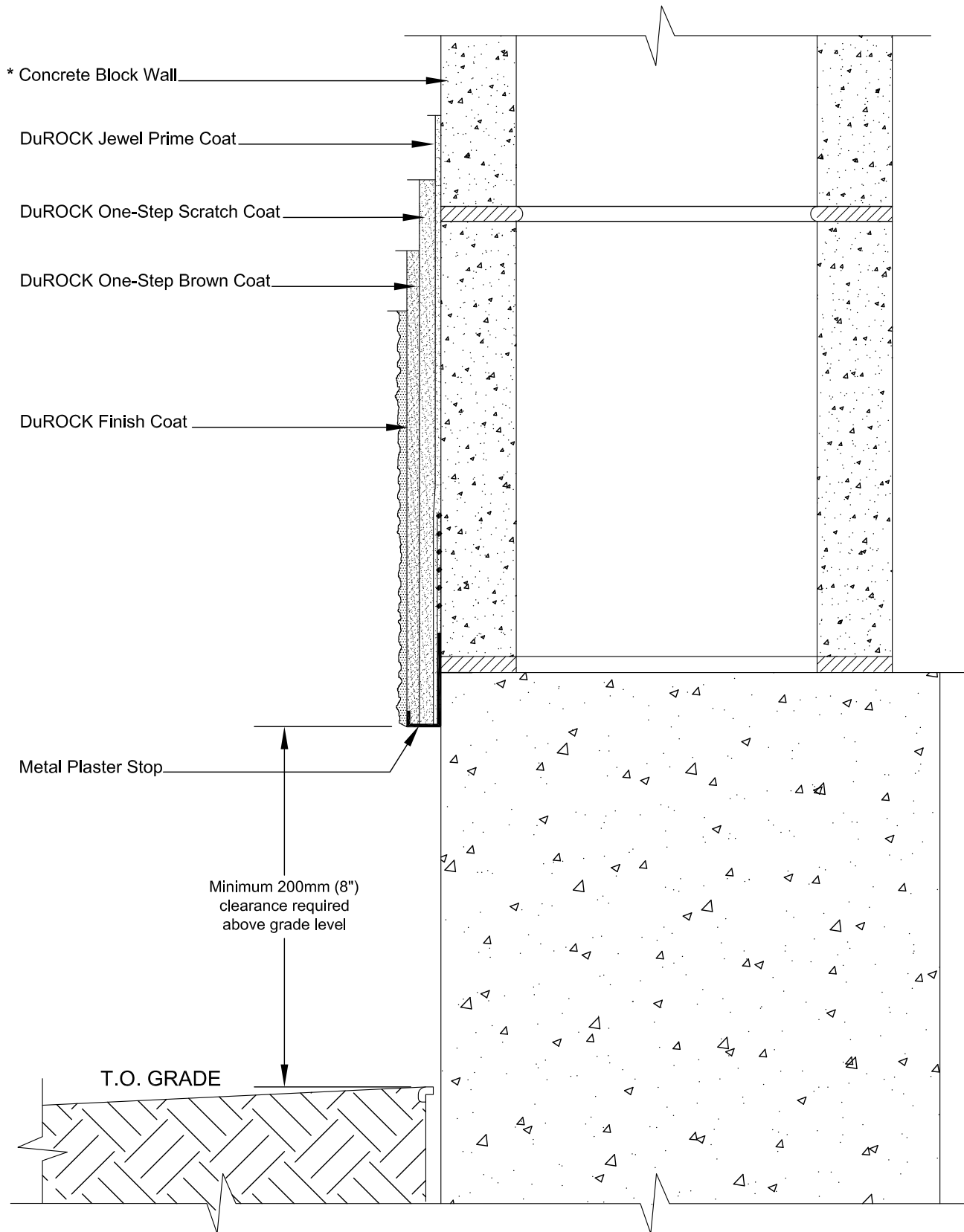
LAST REVISED: JUNE 2017

ISSUED: DEC 2016

DRAWN BY: RIZ

SCALE: NTS

STUCCO-PLUS  
**D03**



(\* by others)

## STUCCO-PLUS

(STUCCO-PLUS OVER CONCRETE BLOCK SUBSTRATE)

DRAWING TITLE:

## TERMINATION AT GRADE

This detail complements the corresponding system specification and illustrates the system configuration for the depicted construction. Visit [www.durock.com](http://www.durock.com) for the latest revisions and contact DuROCK for project-specific details to suit conditions other than those depicted. DuROCK assumes no liability for the architecture, design, engineering, or workmanship of any project.

**DuROCK**

Alfacing International Limited

101-B ROYTEC ROAD  
WOODBRIDGE, ONTARIO  
TEL : (905) 856-0133, FAX : (905) 856-9654  
[www.durock.com](http://www.durock.com)

ARCHITECTURAL FINISHING SYSTEMS

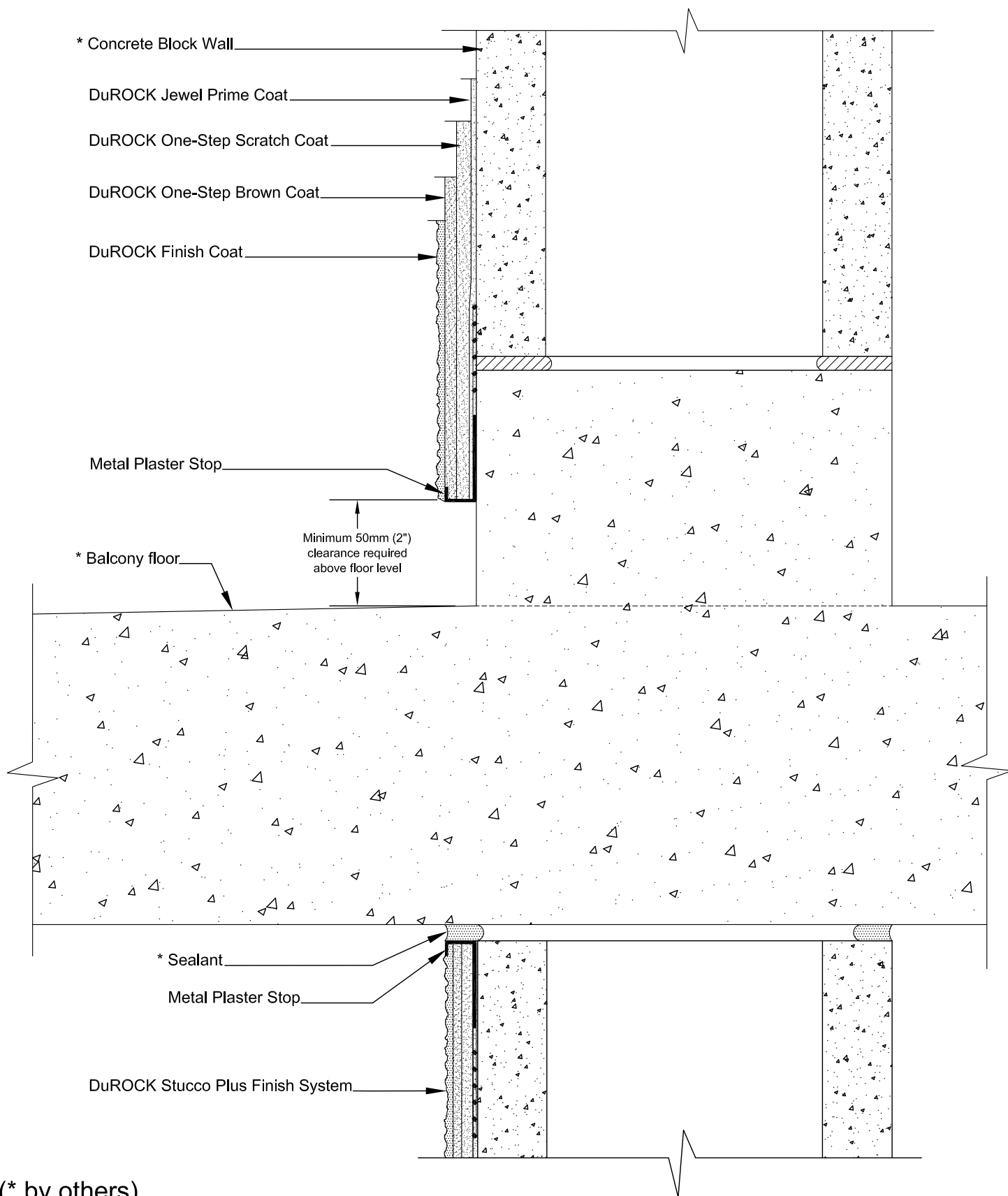
LAST REVISED: JUNE 2017

ISSUED: DEC 2016

DRAWN BY: RIZ

SCALE: NTS

STUCCO-PLUS  
**D04**



(\* by others)

## STUCCO-PLUS

(STUCCO-PLUS OVER CONCRETE BLOCK SUBSTRATE)

DRAWING TITLE:

## TERMINATION AT BALCONY SLAB

This detail complements the corresponding system specification and illustrates the system configuration for the depicted construction. Visit [www.durock.com](http://www.durock.com) for the latest revisions and contact DuROCK for project-specific details to suit conditions other than those depicted. DuROCK assumes no liability for the architecture, design, engineering, or workmanship of any project.

**DuROCK**  
**Alfacing International Limited**  
 101-B ROYTEC ROAD  
 WOODBRIDGE, ONTARIO  
 TEL : (905) 856-0133, FAX : (905) 856-9654  
[www.durock.com](http://www.durock.com)  
 ARCHITECTURAL FINISHING SYSTEMS

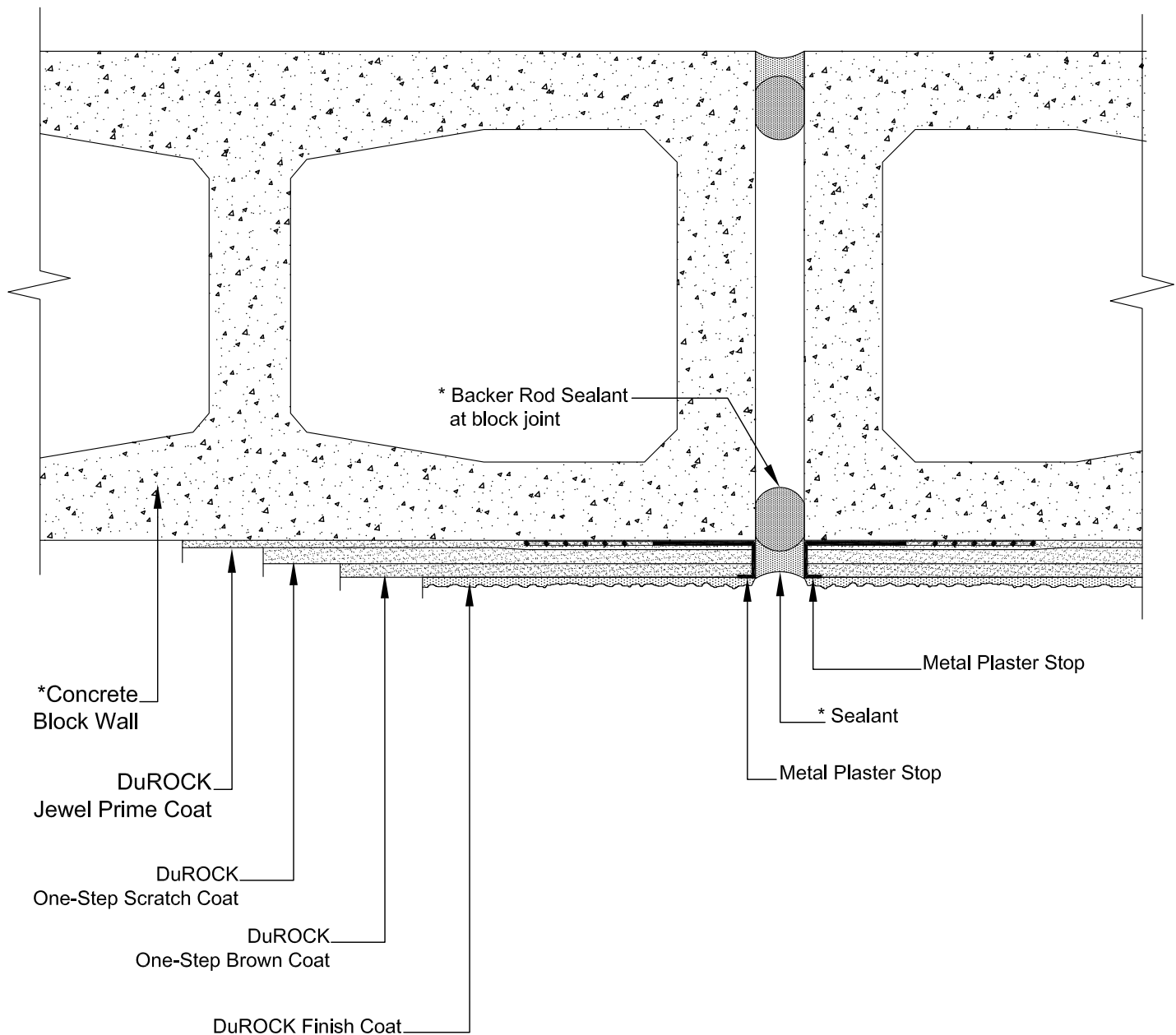
LAST REVISED: JUNE 2017

ISSUED: DEC 2016

DRAWN BY: RIZ

SCALE: NTS

STUCCO-PLUS  
**D05**



(\* by others)

## STUCCO-PLUS

(STUCCO-PLUS OVER CONCRETE BLOCK SUBSTRATE)

DRAWING TITLE:

## VERTICAL EXPANSION JOINT

(PLAN DETAIL)

This detail complements the corresponding system specification and illustrates the system configuration for the depicted construction. Visit [www.durock.com](http://www.durock.com) for the latest revisions and contact DuROCK for project-specific details to suit conditions other than those depicted. DuROCK assumes no liability for the architecture, design, engineering, or workmanship of any project.

**DuROCK**

Alfacing International Limited

101-B ROYTEC ROAD  
WOODBRIDGE, ONTARIO  
TEL : (905) 856-0133, FAX : (905) 856-9654  
[www.durock.com](http://www.durock.com)

ARCHITECTURAL FINISHING SYSTEMS

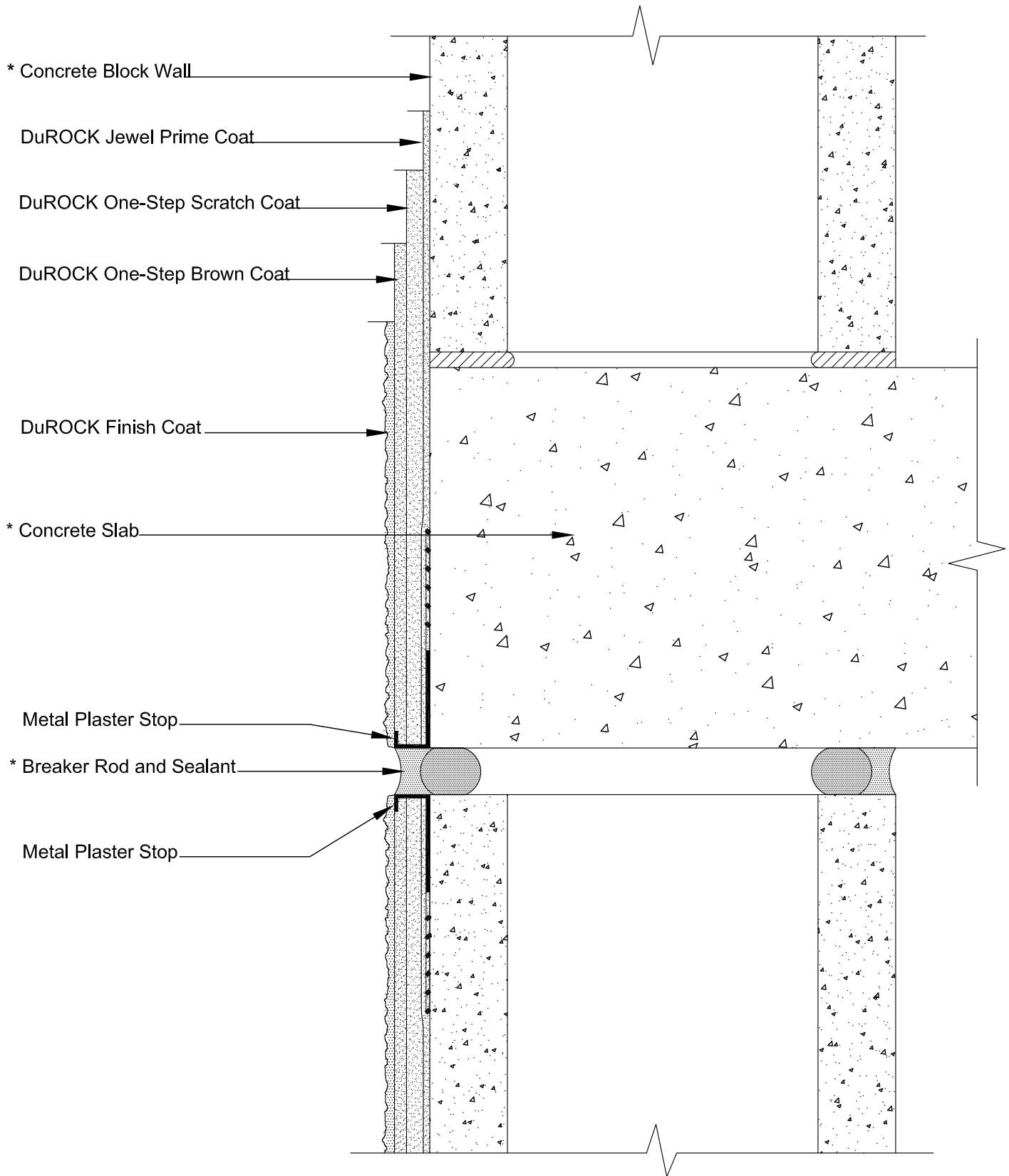
LAST REVISED: JUNE 2017

ISSUED: DEC 2016

DRAWN BY: RIZ

SCALE: NTS

STUCCO-PLUS  
**D06**



(\* by others)

## STUCCO-PLUS

(STUCCO-PLUS OVER CONCRETE BLOCK SUBSTRATE)

DRAWING TITLE:

## HORIZONTAL EXPANSION JOINT

This detail complements the corresponding system specification and illustrates the system configuration for the depicted construction. Visit [www.durock.com](http://www.durock.com) for the latest revisions and contact DuROCK for project-specific details to suit conditions other than those depicted. DuROCK assumes no liability for the architecture, design, engineering, or workmanship of any project.

**DuROCK**  
**Alfacing International Limited**  
 101-B ROYTEC ROAD  
 WOODBRIDGE, ONTARIO  
 TEL : (905) 856-0133, FAX : (905) 856-9654  
[www.durock.com](http://www.durock.com)  
 ARCHITECTURAL FINISHING SYSTEMS

LAST REVISED: JUNE 2017

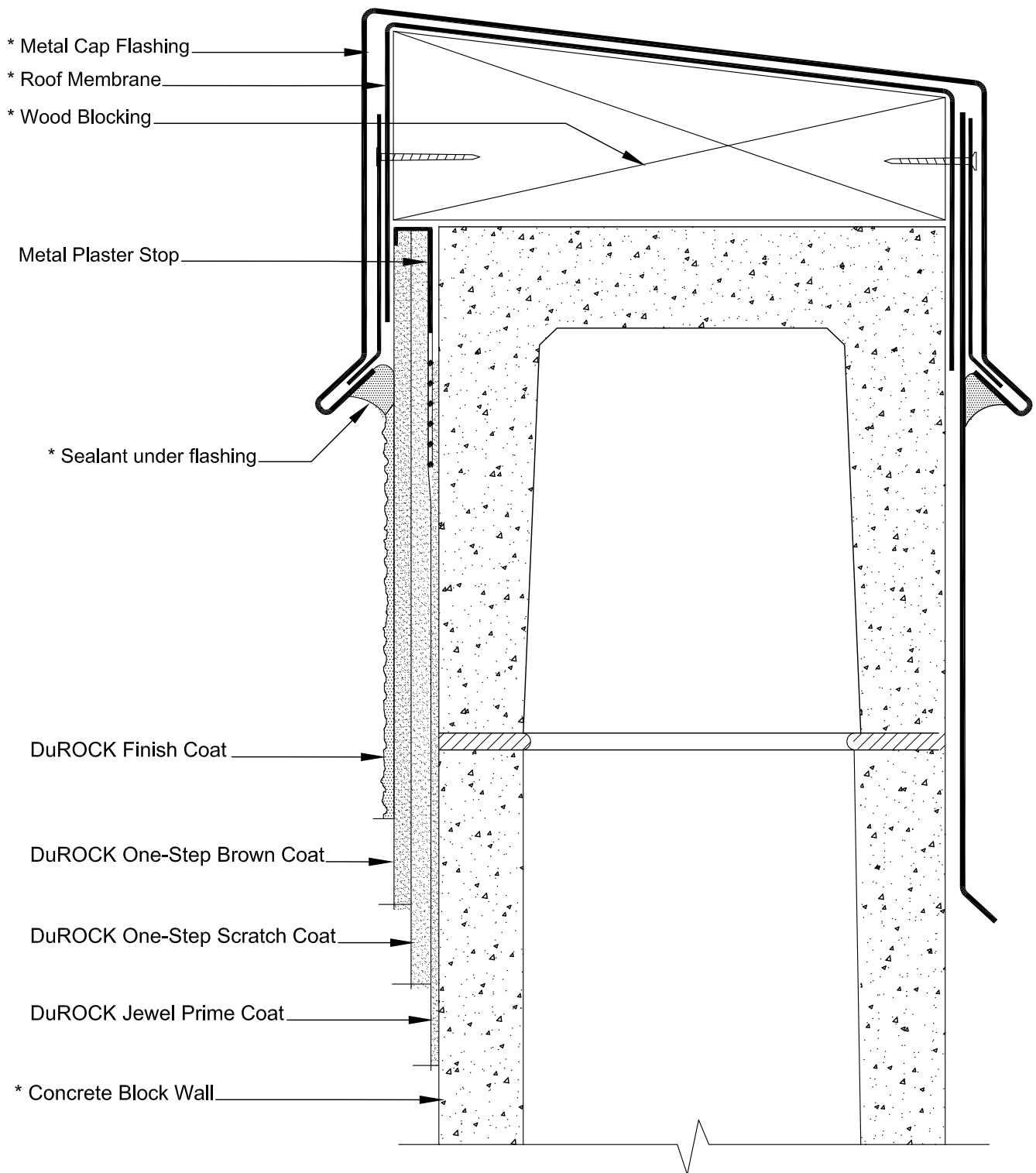
ISSUED: DEC 2016

DRAWN BY: RIZ

SCALE: NTS

STUCCO-PLUS

**D07**



(\* by others)

## STUCCO-PLUS

(STUCCO-PLUS OVER CONCRETE BLOCK SUBSTRATE)

DRAWING TITLE:

### TERMINATION AT ROOF PARAPET

This detail complements the corresponding system specification and illustrates the system configuration for the depicted construction. Visit [www.durock.com](http://www.durock.com) for the latest revisions and contact DuROCK for project-specific details to suit conditions other than those depicted. DuROCK assumes no liability for the architecture, design, engineering, or workmanship of any project.

**DuROCK**  
**Alfacing International Limited**  
 101-B ROYTEC ROAD  
 WOODBRIDGE, ONTARIO  
 TEL : (905) 856-0133, FAX : (905) 856-9654  
[www.durock.com](http://www.durock.com)  
 ARCHITECTURAL FINISHING SYSTEMS

LAST REVISED: JUNE 2017

ISSUED: DEC 2016

DRAWN BY: RIZ

SCALE: NTS

**STUCCO-PLUS**  
**D08**