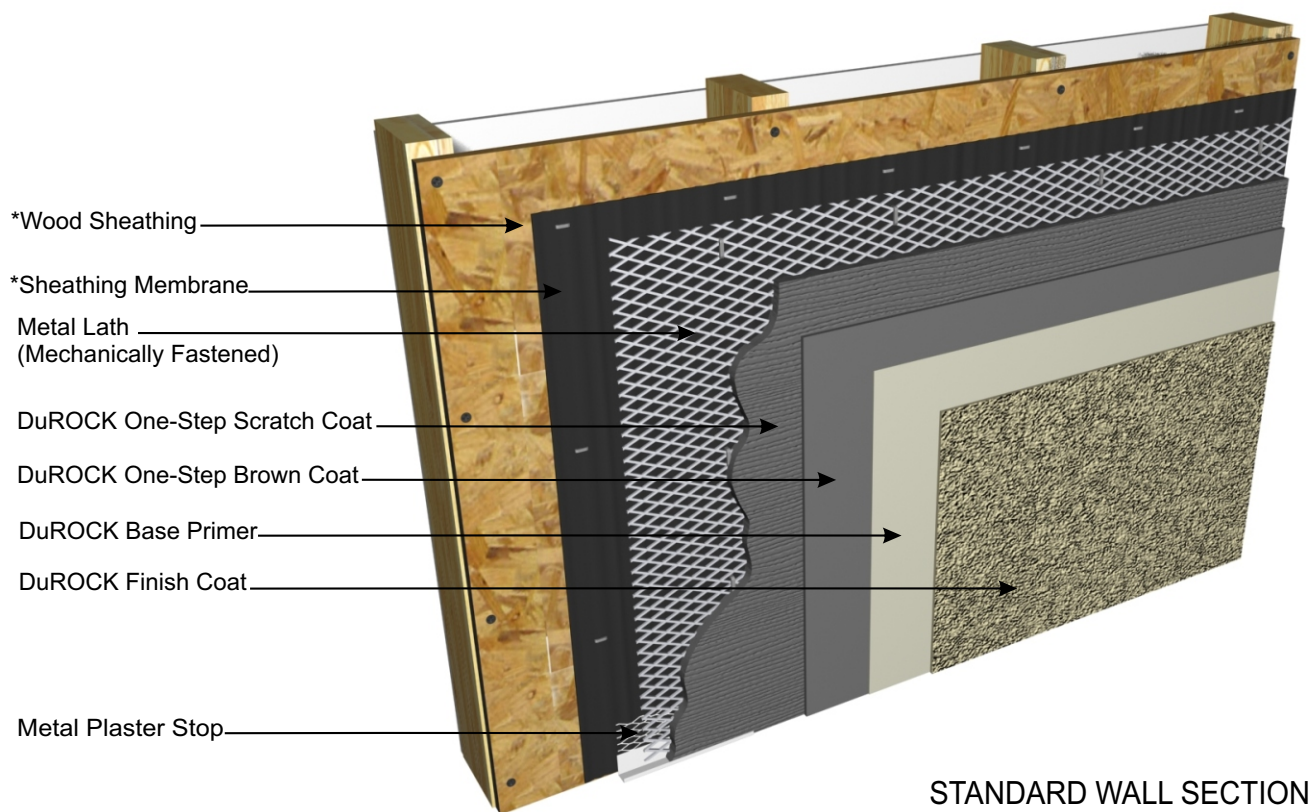


DuROCK Stucco Plus

Polymer-Enhanced Stucco System

DuROCK Stucco Plus for Sheathing Substrates

Stucco Plus incorporates a polymer-enhanced, fibre-reinforced base coat for superior adhesive and cohesive strength, as well as a polymer-based finish which is available in a variety of textures and infinite colours. The stucco base coat is supported by and reinforced with mechanically attached metal lath. Please refer to the system specification and appropriate details for further information.



(* by others)



Alfacing International Limited
101 B.ROYTEC ROAD, WOODBRIDGE, ON, L4L 8A9
TEL: (905) 856-0133, FAX: (905) 856-9654
www.durock.com

ARCHITECTURAL FINISHING SYSTEMS

This detail complements the corresponding system specification and illustrates the system configuration for the depicted construction. Visit www.durock.com for the latest revisions and contact DuRock for project-specific details to suit conditions other than those depicted. DuRock assumes no liability for the architecture, design, engineering, or workmanship of any project.

STUCCO PLUS

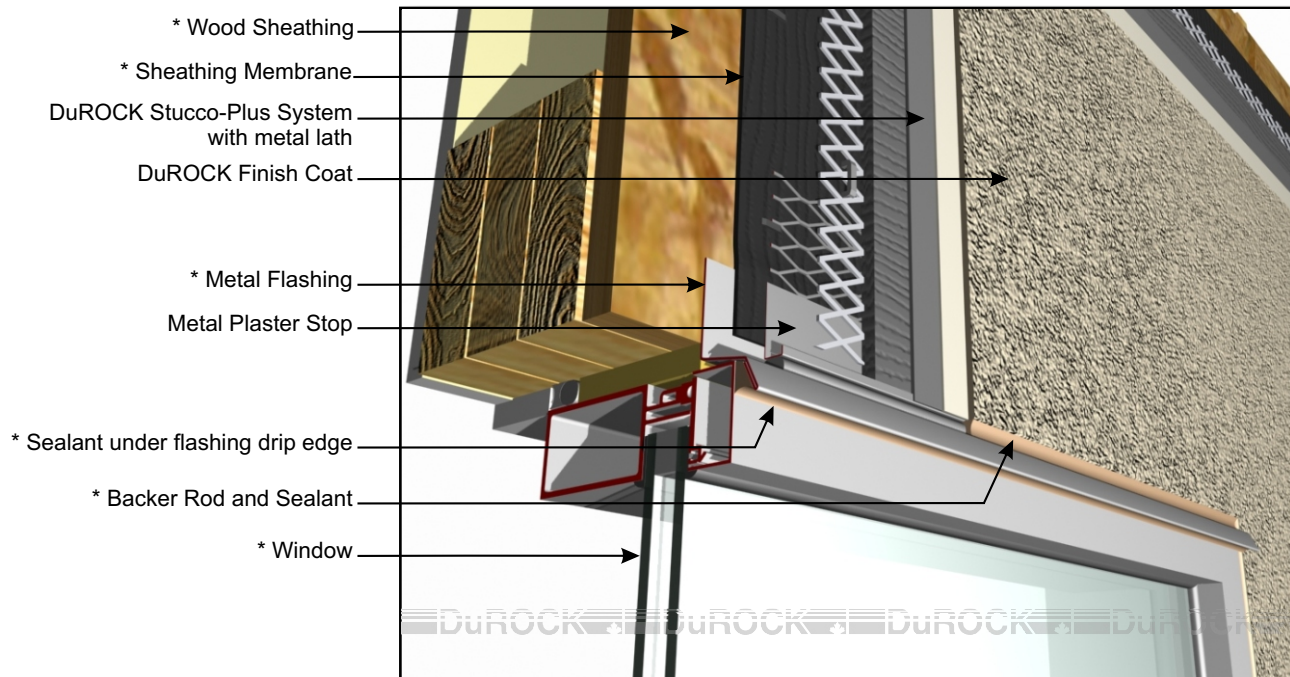
Revision 01: June 2017

Issued: Aug 2006

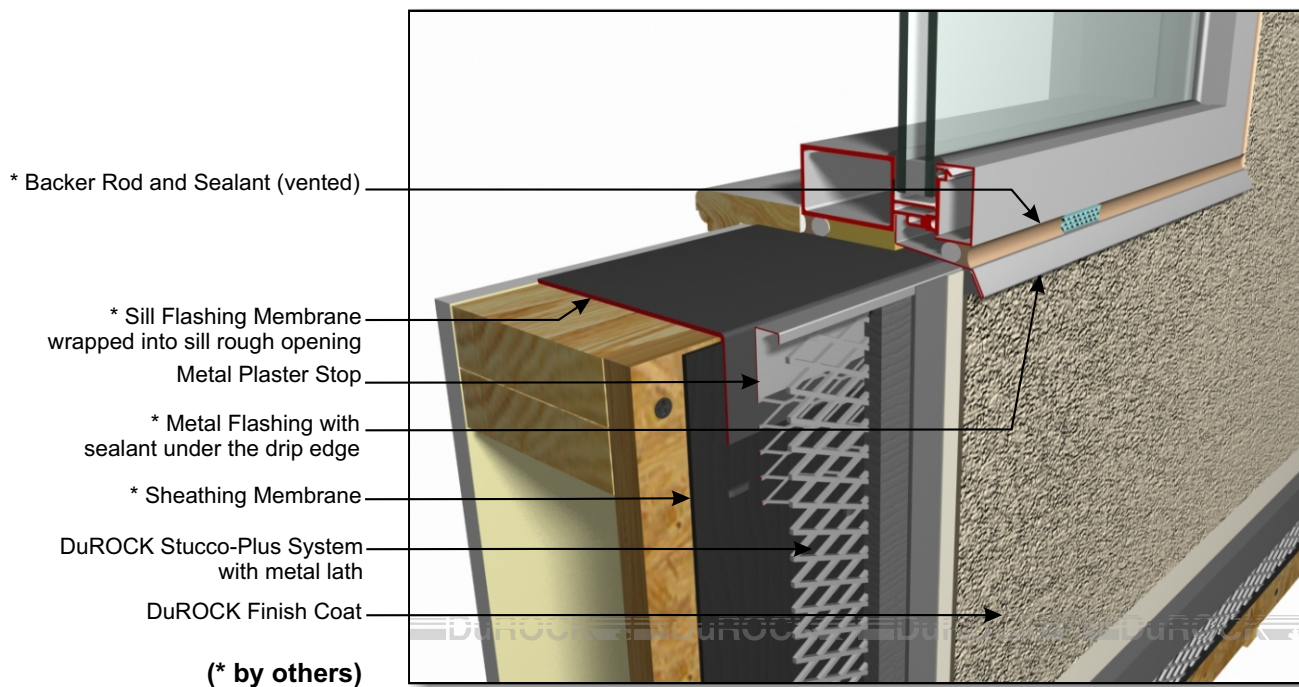
COVER

DuROCK Stucco Plus

Polymer-Enhanced Stucco System



STUCCO PLUS (01) WINDOW HEADER

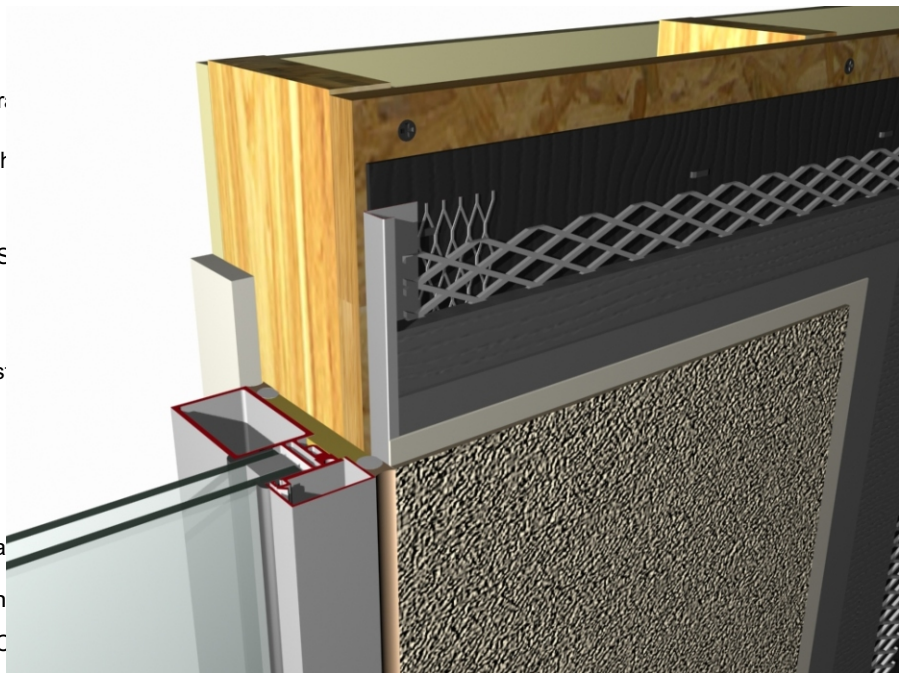


STUCCO PLUS (02) WINDOW SILL

DuROCK Stucco Plus

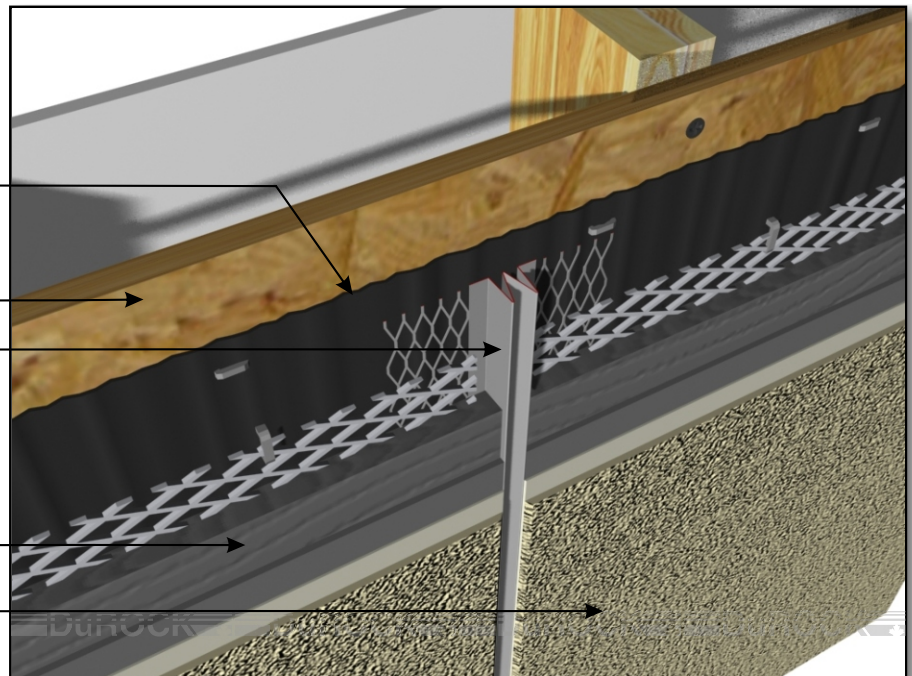
Polymer-Enhanced Stucco System

- * Sheathing Membr.
- * Wood Sheath
- Metal Plaster S
- DuROCK Stucco-Plus Sys
with metal
- * Backer Rod and Sea
- * Win
- DuROCK Finish C



STUCCO PLUS (03) WINDOW JAMB

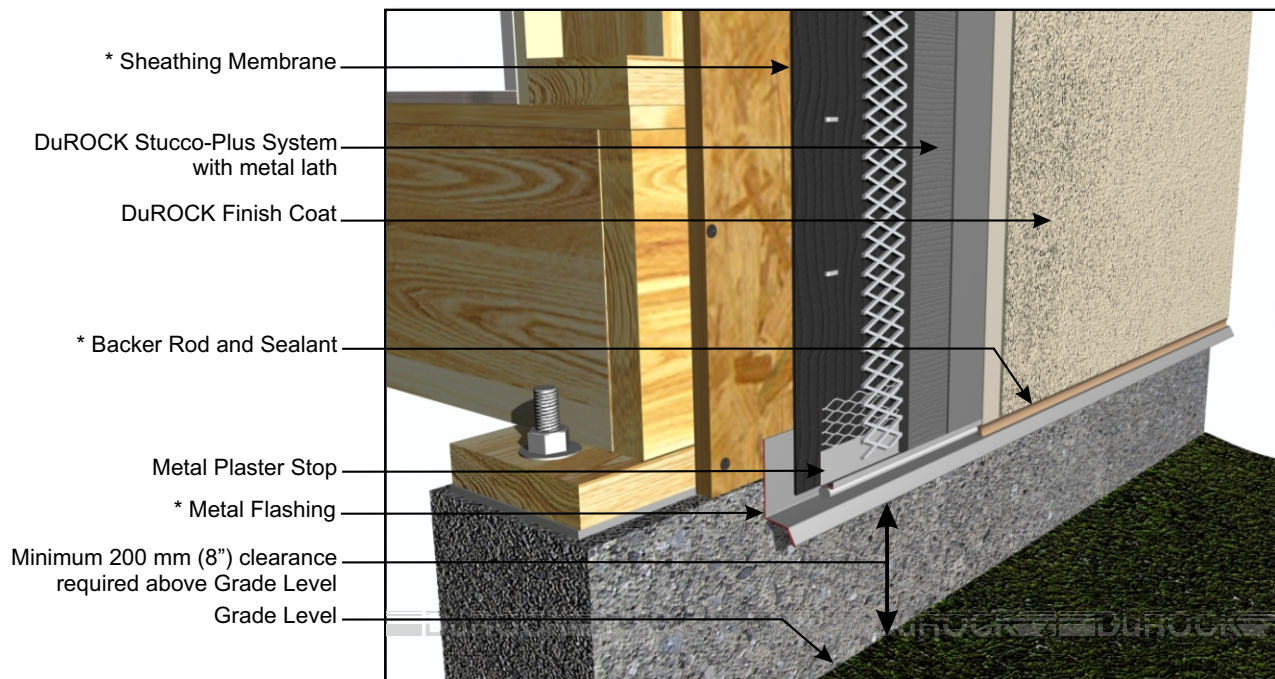
- * Sheathing Membrane
- * Wood Sheathing
- * Metal Control Joint
- DuROCK Stucco-Plus System
with metal lath
- DuROCK Finish Coat
- (* by others)



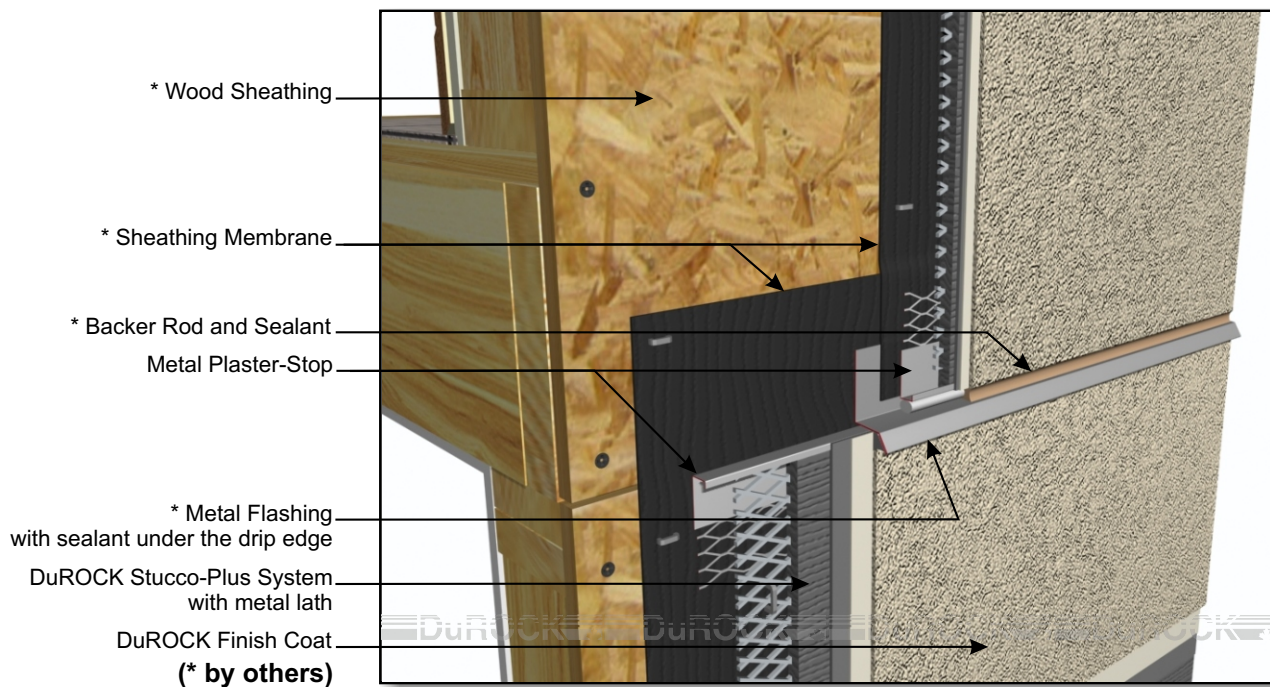
STUCCO PLUS (04) CONTROL JOINT

DuROCK Stucco Plus

Polymer-Enhanced Stucco System



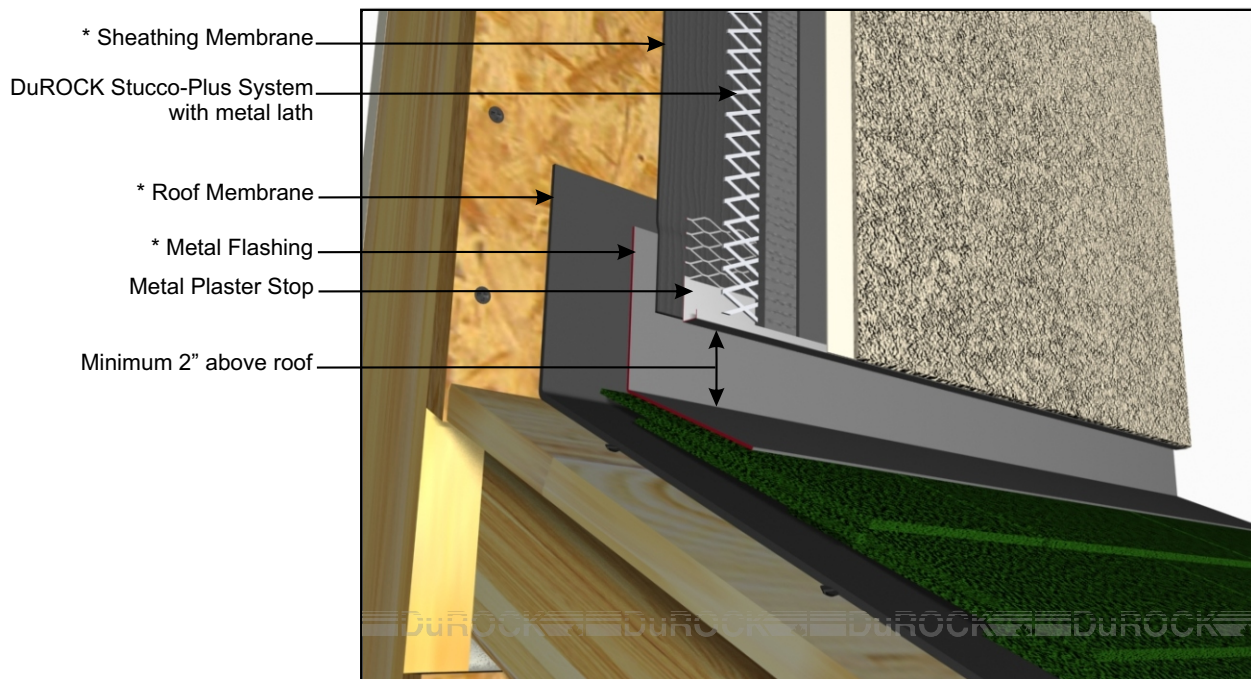
STUCCO PLUS (05) TERMINATION AT GRADE



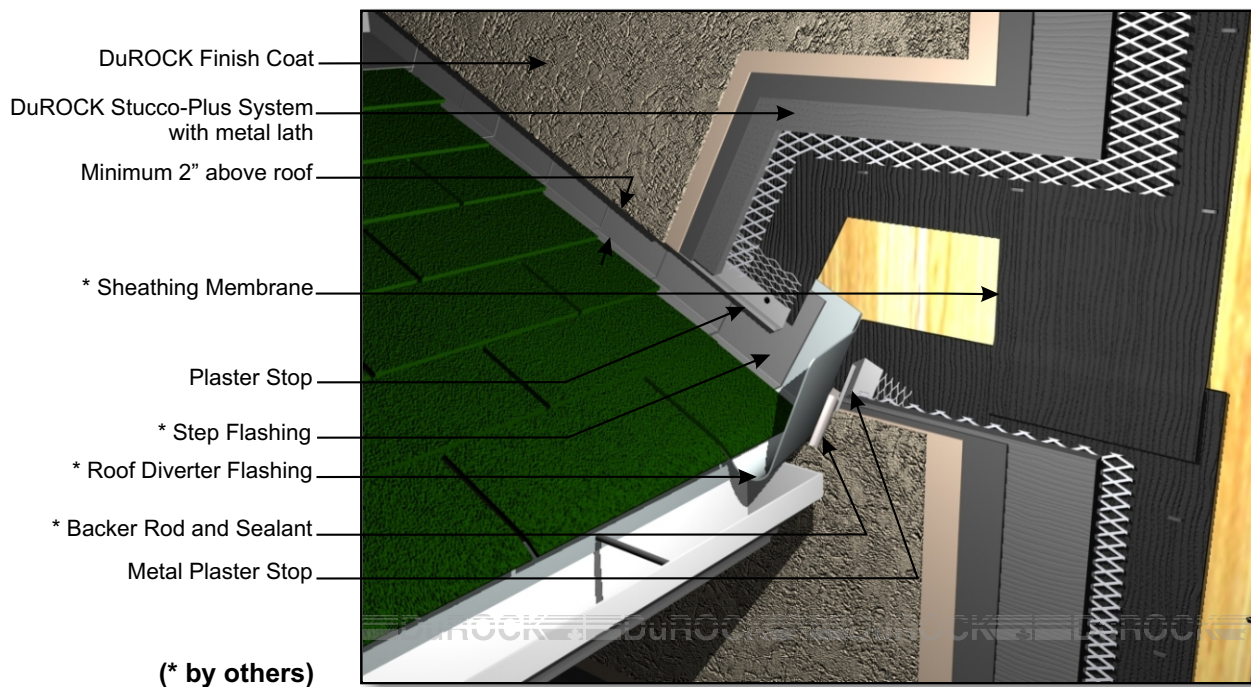
STUCCO PLUS (06) HORIZONTAL EXPANSION JOINT

DuROCK Stucco Plus

Polymer-Enhanced Stucco System



STUCCO PLUS (07) TERMINATION AT SLOPED ROOF



STUCCO PLUS (07A) SLOPED ROOF DIVERTER FLASHING