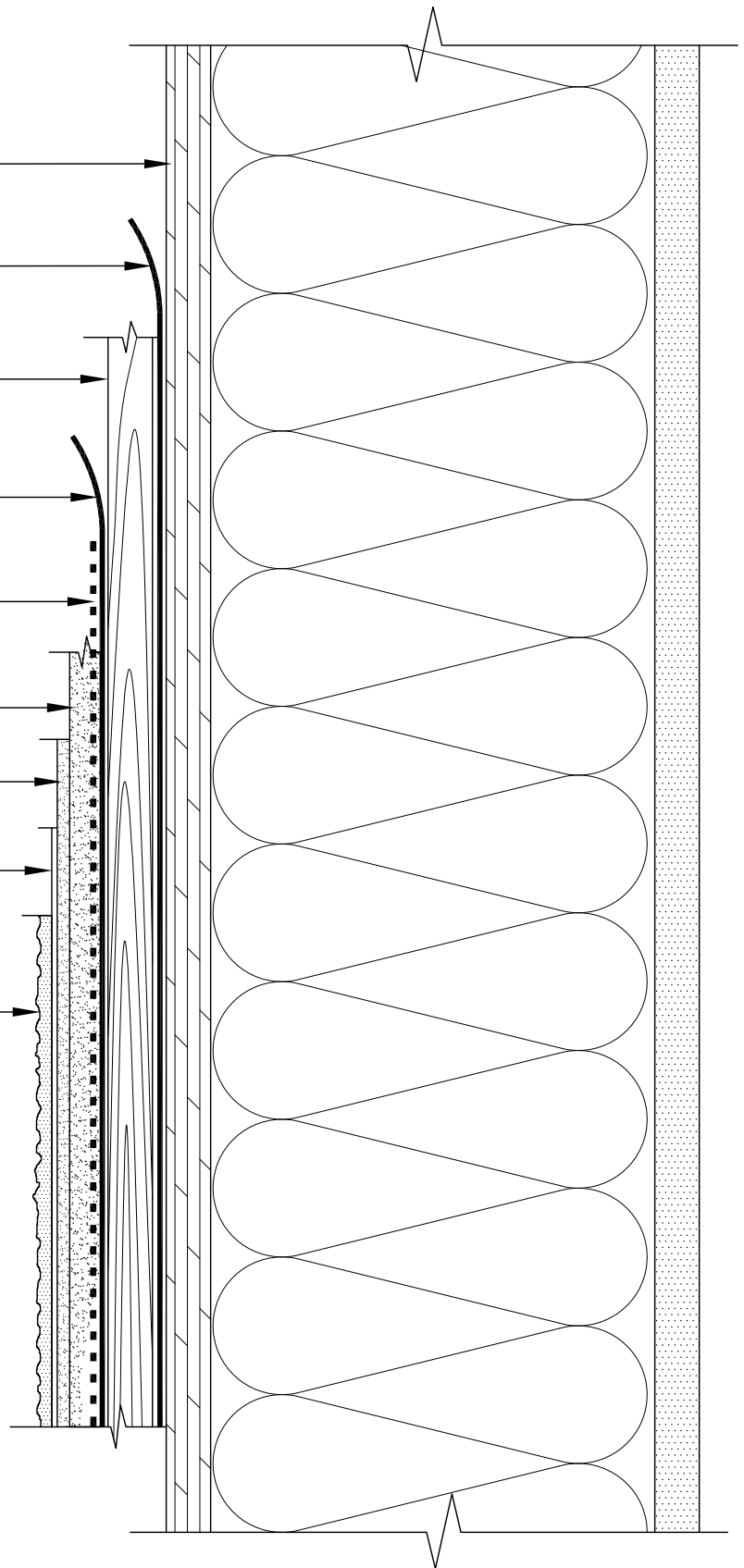


- * Wood Sheathing
- * Sheathing Membrane, layer 1
- * Wood Strapping
(spaced vertically at 8" OC.)
- * Sheathing Membrane, layer 2
over the wood strapping
- Metal Lath
(Mechanically fastened to wood strapping)
- DuROCK One-Step Scratch Coat
- DuROCK One-Step Brown Coat
- DuROCK Base Primer
(matching to finish coat colour)
- DuROCK Finish Coat



(* by others)

STUCCO-PLUS RS
POLYMER-ENHANCED RAIN-SCREEN STUCCO SYSTEM

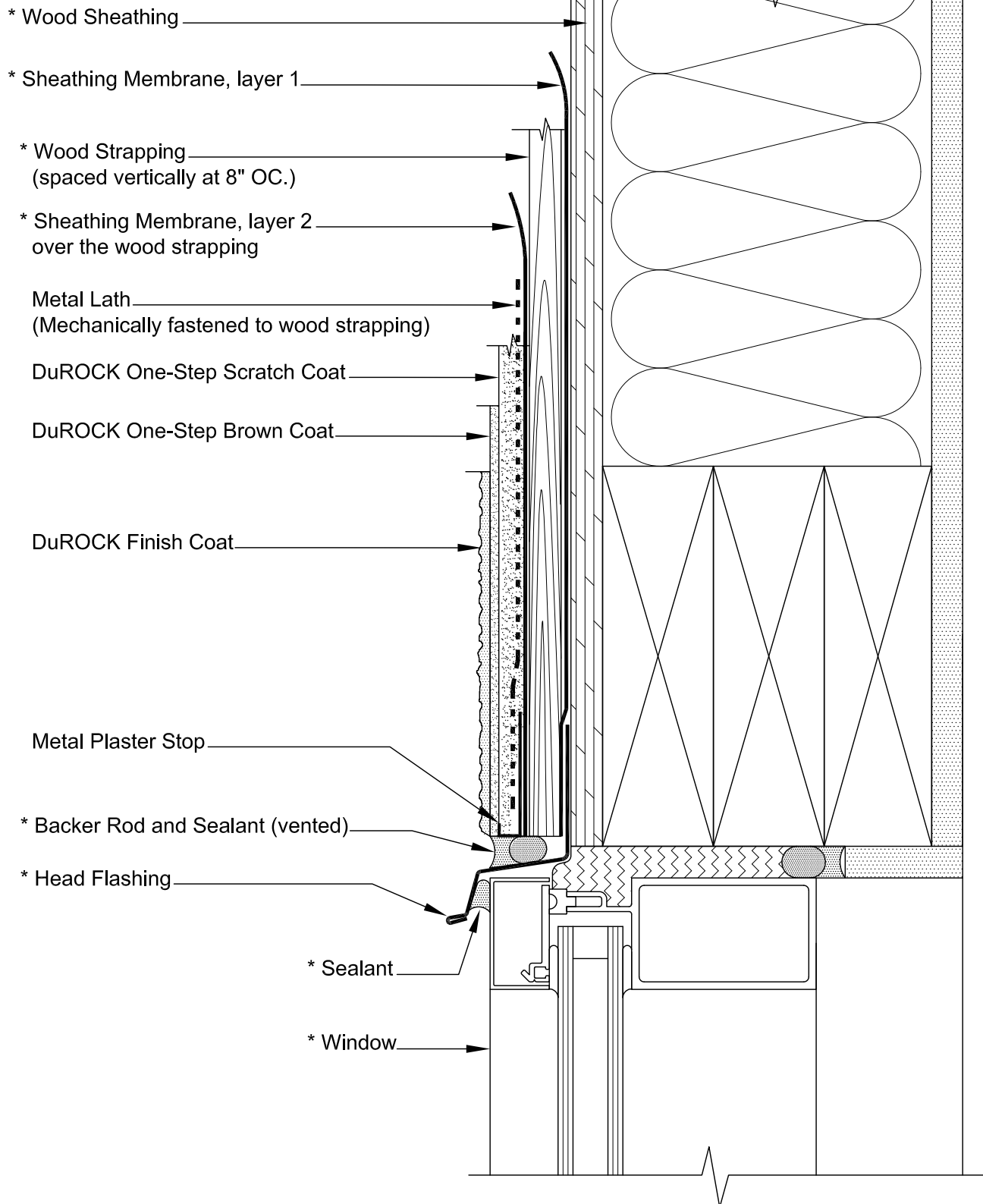
DRAWING TITLE:

STUCCO-PLUS RS
STANDARD SECTION DETAIL

This detail complements the corresponding system specification and illustrates the system configuration for the depicted construction. Visit www.durock.com for the latest revisions and contact DuROCK for project-specific details to suit conditions other than those depicted. DuROCK assumes no liability for the architecture, design, engineering, or workmanship of any project.

DuROCK
Alfacing International Limited
101-B ROYTEC ROAD
WOODBIDGE, ONTARIO
TEL : (905) 856-0133, FAX : (905) 856-9654
www.durock.com
ARCHITECTURAL FINISHING SYSTEMS

LAST REVISE: JUNE 2017
ISSUED: MAY 2007
DRAWN BY: RIZ
SCALE: NTS
STUCCO-PLUS RS
COVER



(* by others)

STUCCO-PLUS RS

POLYMER-ENHANCED RAIN-SCREEN STUCCO SYSTEM

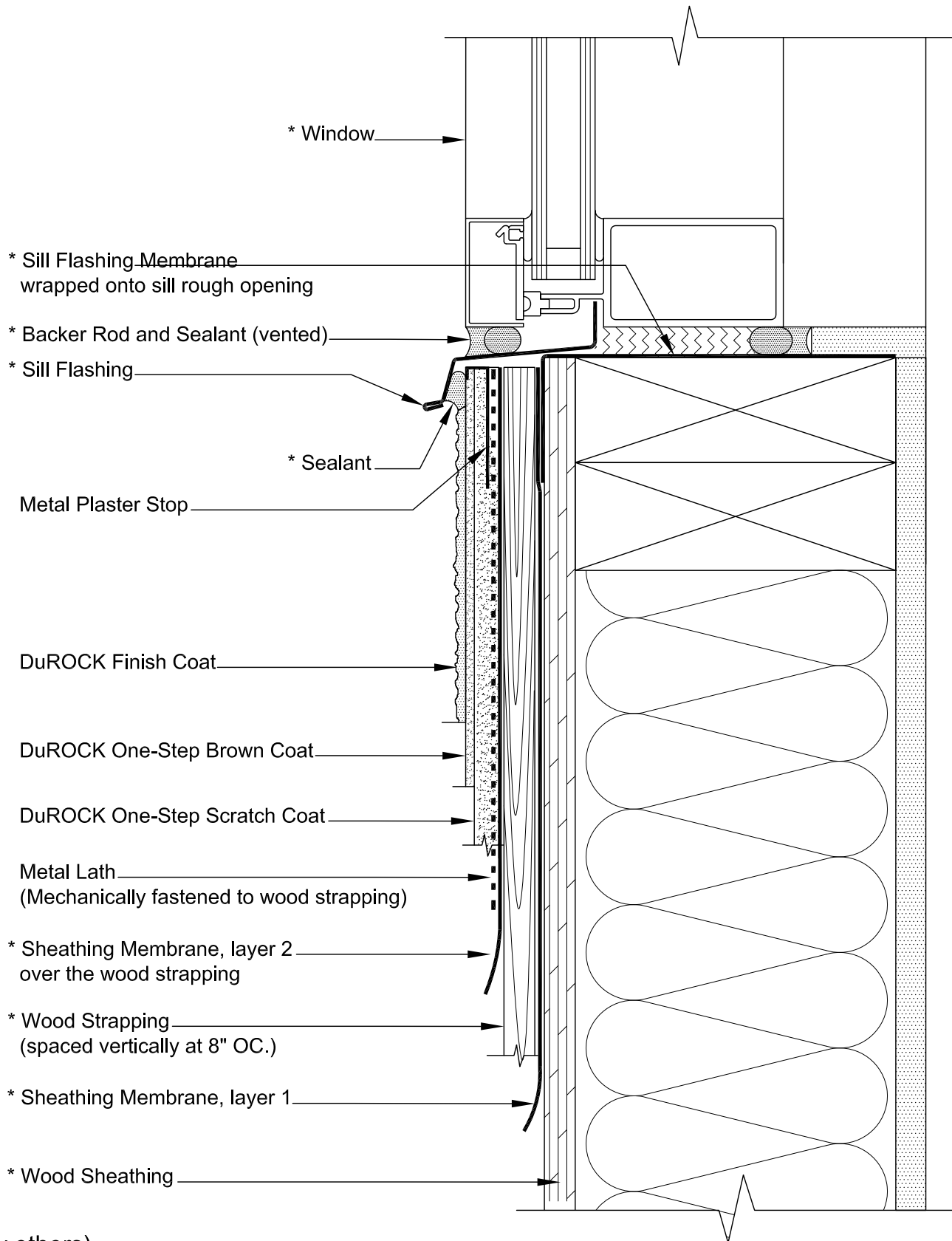
DRAWING TITLE:

WINDOW HEADER DETAIL

This detail complements the corresponding system specification and illustrates the system configuration for the depicted construction. Visit www.durock.com for the latest revisions and contact DuROCK for project-specific details to suit conditions other than those depicted. DuROCK assumes no liability for the architecture, design, engineering, or workmanship of any project.

DuROCK
Alfacing International Limited
 101-B ROYTEC ROAD
 WOODBRIDGE, ONTARIO
 TEL : (905) 856-0133, FAX : (905) 856-9654
www.durock.com
 ARCHITECTURAL FINISHING SYSTEMS

LAST REVISED: JUN 2017
 ISSUED: MAY 2007
 DRAWN BY: RIZ
 SCALE: NTS
 STUCCO-PLUS RS
D01



(* by others)

STUCCO-PLUS RS
POLYMER-ENHANCED RAIN-SCREEN STUCCO SYSTEM

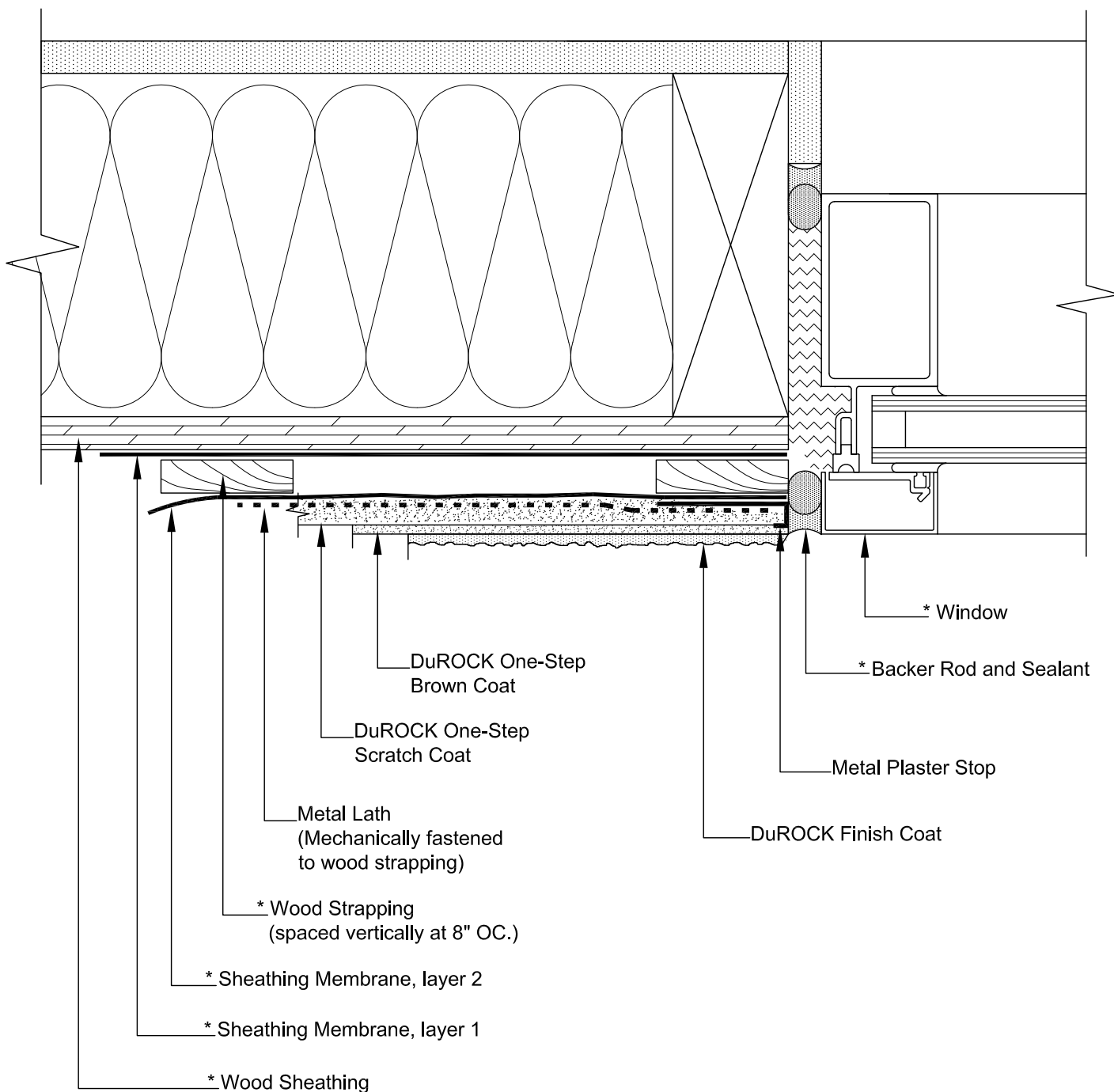
DRAWING TITLE:

WINDOW SILL DETAIL

This detail complements the corresponding system specification and illustrates the system configuration for the depicted construction. Visit www.durock.com for the latest revisions and contact DuROCK for project-specific details to suit conditions other than those depicted. DuROCK assumes no liability for the architecture, design, engineering, or workmanship of any project.

DuROCK
Alfacing International Limited
101-B ROYTEC ROAD
WOODBIDGE, ONTARIO
TEL : (905) 856-0133, FAX : (905) 856-9654
www.durock.com
ARCHITECTURAL FINISHING SYSTEMS

LAST REVISED: JUN 2017
ISSUED: MAY 2007
DRAWN BY: RIZ
SCALE: NTS
STUCCO-PLUS RS
D02



(* by others)

STUCCO-PLUS RS

POLYMER-ENHANCED RAIN-SCREEN STUCCO SYSTEM

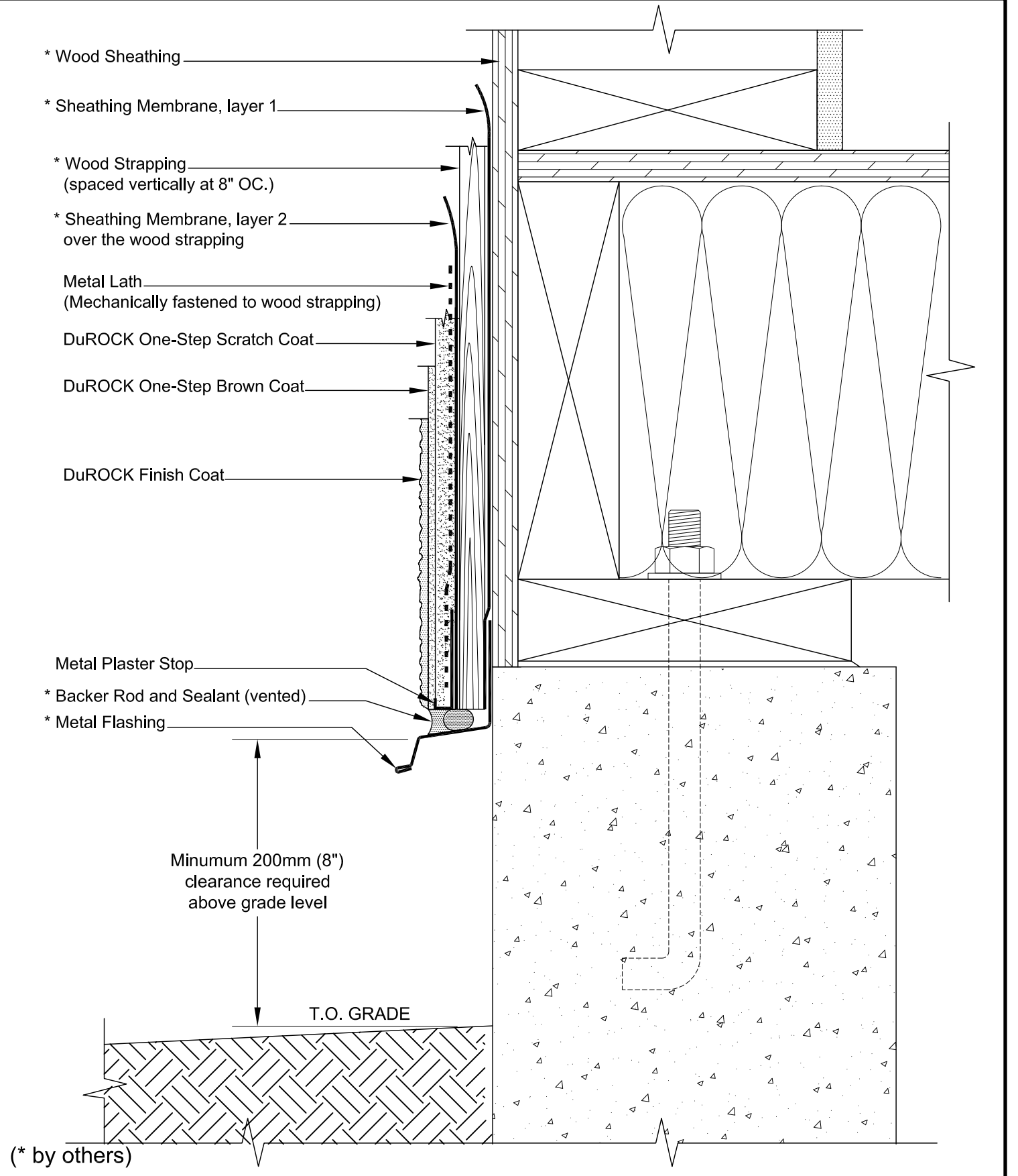
DRAWING TITLE:

WINDOW JAMB (PLAN DETAIL)

This detail complements the corresponding system specification and illustrates the system configuration for the depicted construction. Visit www.durock.com for the latest revisions and contact DuROCK for project-specific details to suit conditions other than those depicted. DuROCK assumes no liability for the architecture, design, engineering, or workmanship of any project.

DuROCK
Alfacing International Limited
 101-B ROYTEC ROAD
 WOODBRIDGE, ONTARIO
 TEL : (905) 856-0133, FAX : (905) 856-9654
www.durock.com
 ARCHITECTURAL FINISHING SYSTEMS

LAST REVISED: JUN 2017
 ISSUED: MAY 2007
 DRAWN BY: RIZ
 SCALE: NTS
 STUCCO-PLUS RS
D03



STUCCO-PLUS RS
POLYMER-ENHANCED RAIN-SCREEN STUCCO SYSTEM

DRAWING TITLE:

TERMINATION AT GRADE

This detail complements the corresponding system specification and illustrates the system configuration for the depicted construction. Visit www.durock.com for the latest revisions and contact DuROCK for project-specific details to suit conditions other than those depicted. DuROCK assumes no liability for the architecture, design, engineering, or workmanship of any project.

DuROCK
Alfacing International Limited
101-B ROYTEC ROAD
WOODBIDGE, ONTARIO
TEL : (905) 856-0133, FAX : (905) 856-9654
www.durock.com
ARCHITECTURAL FINISHING SYSTEMS

LAST REVISED: JUN 2017
ISSUED: MAY 2007
DRAWN BY: RIZ
SCALE: NTS
STUCCO-PLUS RS
D04

- * Wood Sheathing
- * Sheathing Membrane, layer 1
- * Wood Strapping
(spaced vertically at 8" OC.)
- * Sheathing Membrane, layer 2
over the wood strapping
- Metal Lath
(Mechanically fastened to wood strapping)
- DuROCK One-Step Scratch Coat
- DuROCK One-Step Brown Coat
- DuROCK Finish Coat
- Metal Plaster Stop
- * Backer Rod and Sealant (vented)
- * Metal Flashing
- * Sealant under the flashing drip edge
- Metal Plaster Stop

(* by others)

STUCCO-PLUS RS

POLYMER-ENHANCED RAIN-SCREEN STUCCO SYSTEM

DRAWING TITLE:

HORIZONTAL EXPANSION JOINT

This detail complements the corresponding system specification and illustrates the system configuration for the depicted construction. Visit www.durock.com for the latest revisions and contact DuROCK for project-specific details to suit conditions other than those depicted. DuROCK assumes no liability for the architecture, design, engineering, or workmanship of any project.

DuROCK
Alfacing International Limited
 101-B ROYTEC ROAD
 WOODBRIDGE, ONTARIO
 TEL : (905) 856-0133, FAX : (905) 856-9654
www.durock.com
 ARCHITECTURAL FINISHING SYSTEMS

LAST REVISED: JUN 2017

ISSUED: MAY 2007

DRAWN BY: RIZ

SCALE: NTS

STUCCO-PLUS RS

D05