

# DuROCK Stucco Plus

## Polymer-Enhanced Stucco System

### DuROCK Stucco Plus Rainscreen System

Stucco Plus RS is Stucco Plus with a rainscreen. The rainscreen incorporates a drained air space that separates the cladding system from the supporting construction. The Stucco Plus RS details illustrate a drained air space created through the use of wood strapping. Please refer to the system specification and appropriate details for further information.

\*Sheathing Membrane  
over the wood strapping

\*Wood Sheathing

\*Wood strapping  
(Spaced vertically at 8" OC.)

\*Sheathing Membrane

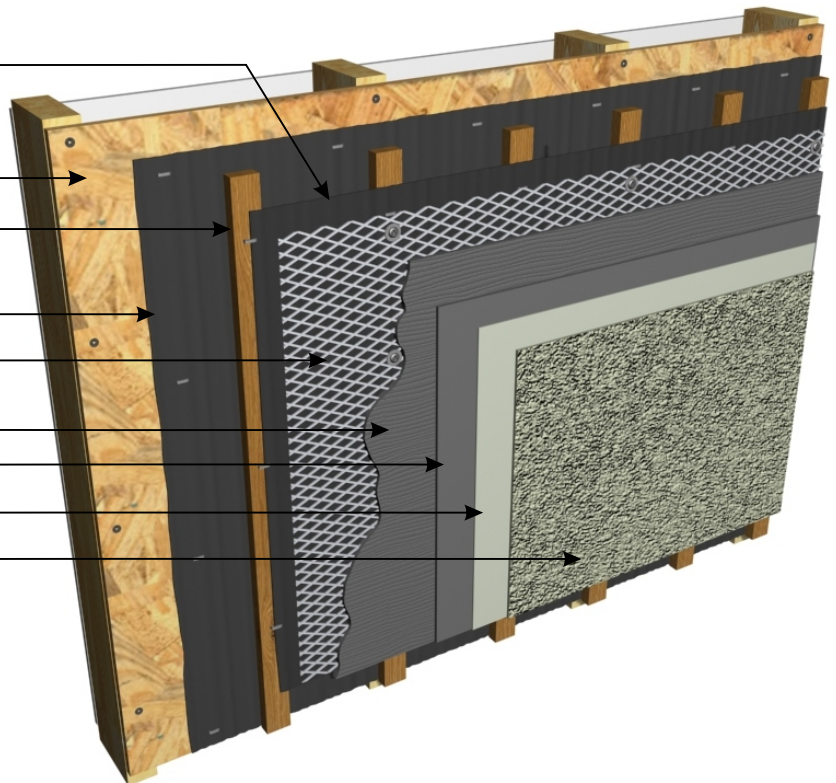
Metal Lath  
(Mechanically Fastened)

DuROCK One-Step Scratch Coat

DuROCK One-Step Brown Coat

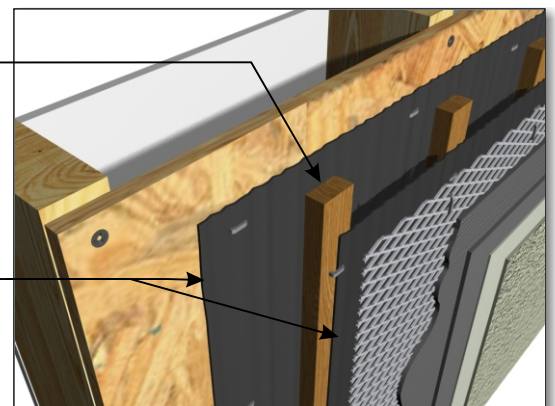
DuROCK Base Primer

DuROCK Finish Coat



\*Wood strapping  
(Spaced vertically at 8" OC.)

Two layers of Sheathing Membrane,  
1st. layer over the sheathing and  
2nd. Layer over the wood strapping.



(\* by others)



Alfacing International Limited  
101 B.ROYTEC ROAD, WOODBRIDGE, ON, L4L 8A9  
TEL: (905) 856-0133, FAX: (905) 856-9654  
[www.durock.com](http://www.durock.com)

ARCHITECTURAL FINISHING SYSTEMS

This detail complements the corresponding system specification and illustrates the system configuration for the depicted construction. Visit [www.durock.com](http://www.durock.com) for the latest revisions and contact DuROCK for project-specific details to suit conditions other than those depicted. DuRock assumes no liability for the architecture, design, engineering, or workmanship of any project.

STUCCO PLUS RS

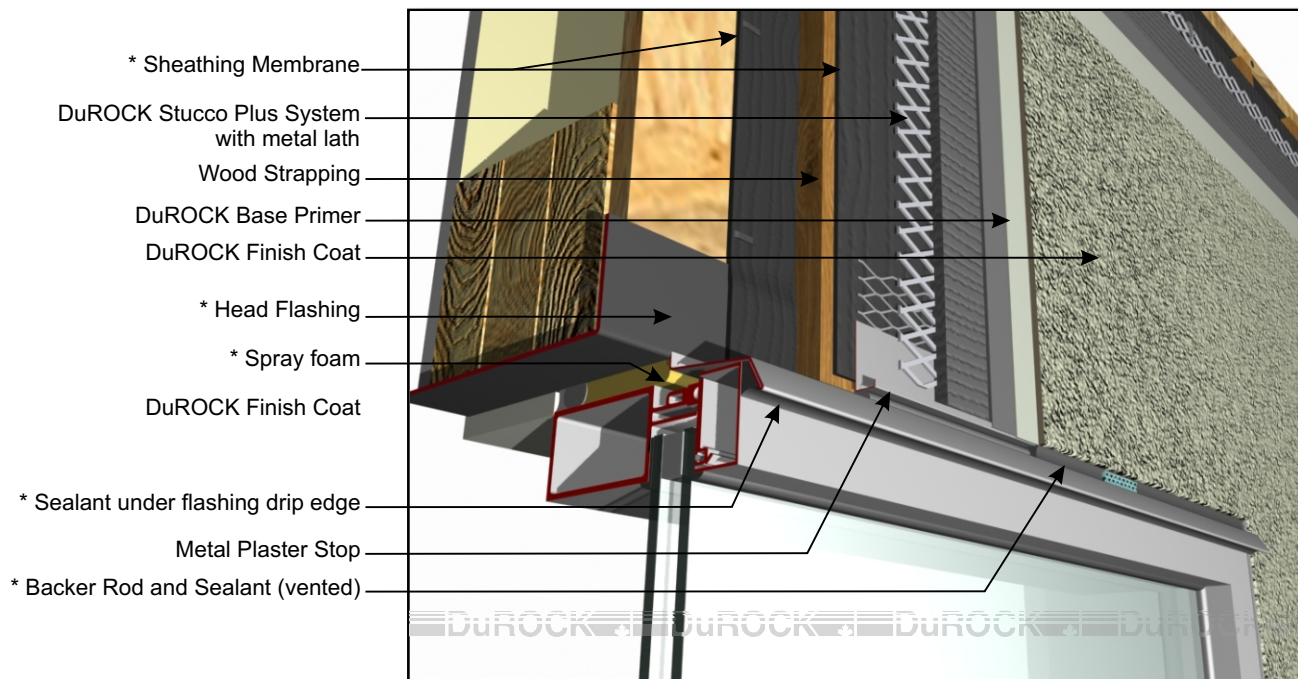
Revision 01: June 2017

Issued: Aug 2006

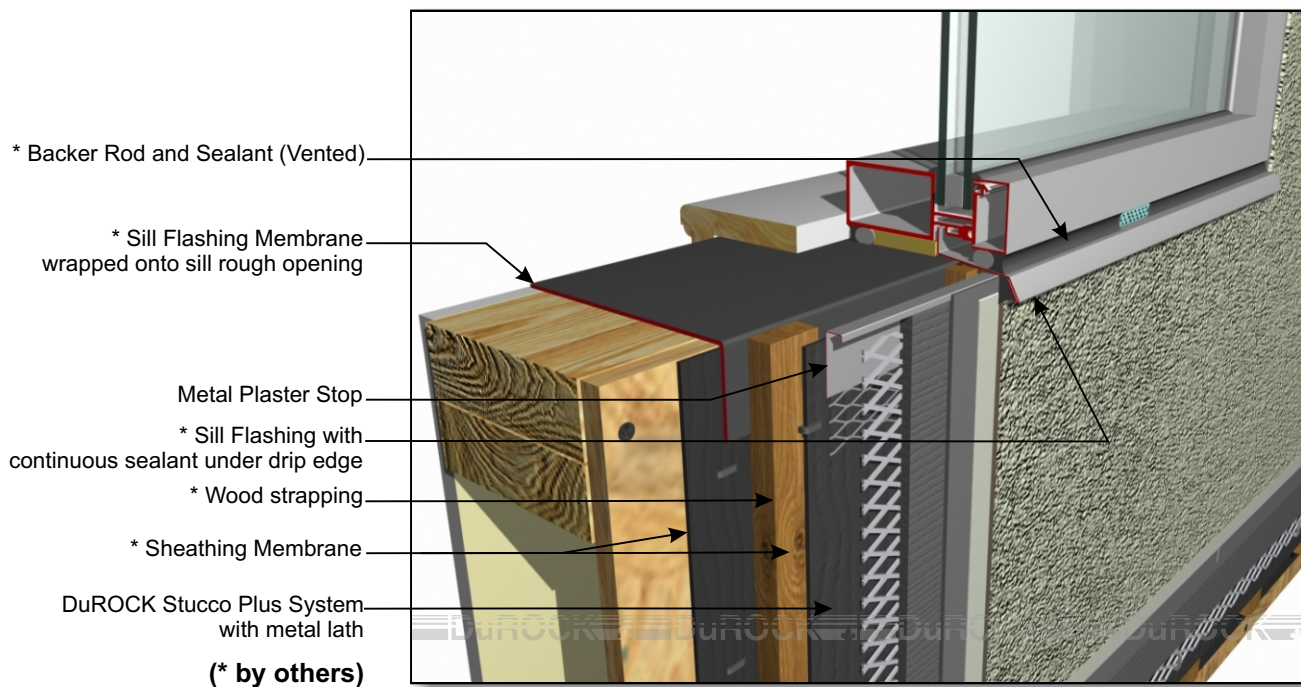
**COVER**

# DuROCK Stucco Plus

## Polymer-Enhanced Stucco System



**STUCCO PLUS RS (01) WINDOW HEADER**

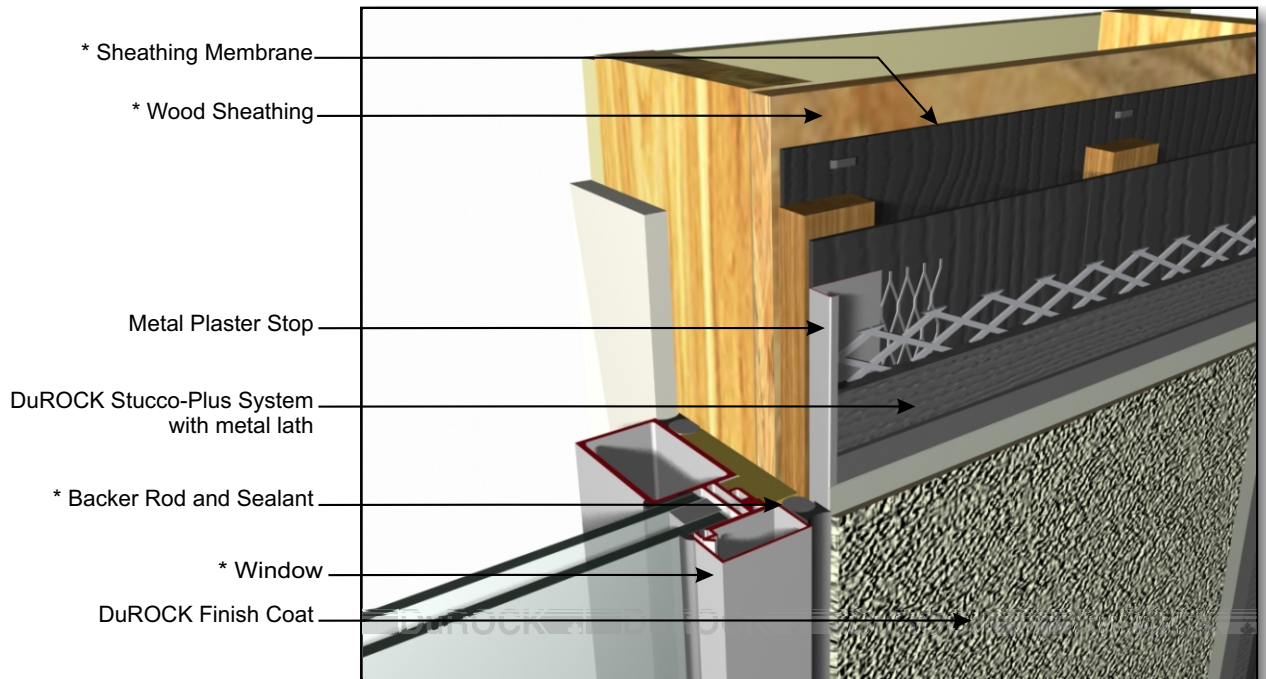


**STUCCO PLUS RS (02) WINDOW SILL**

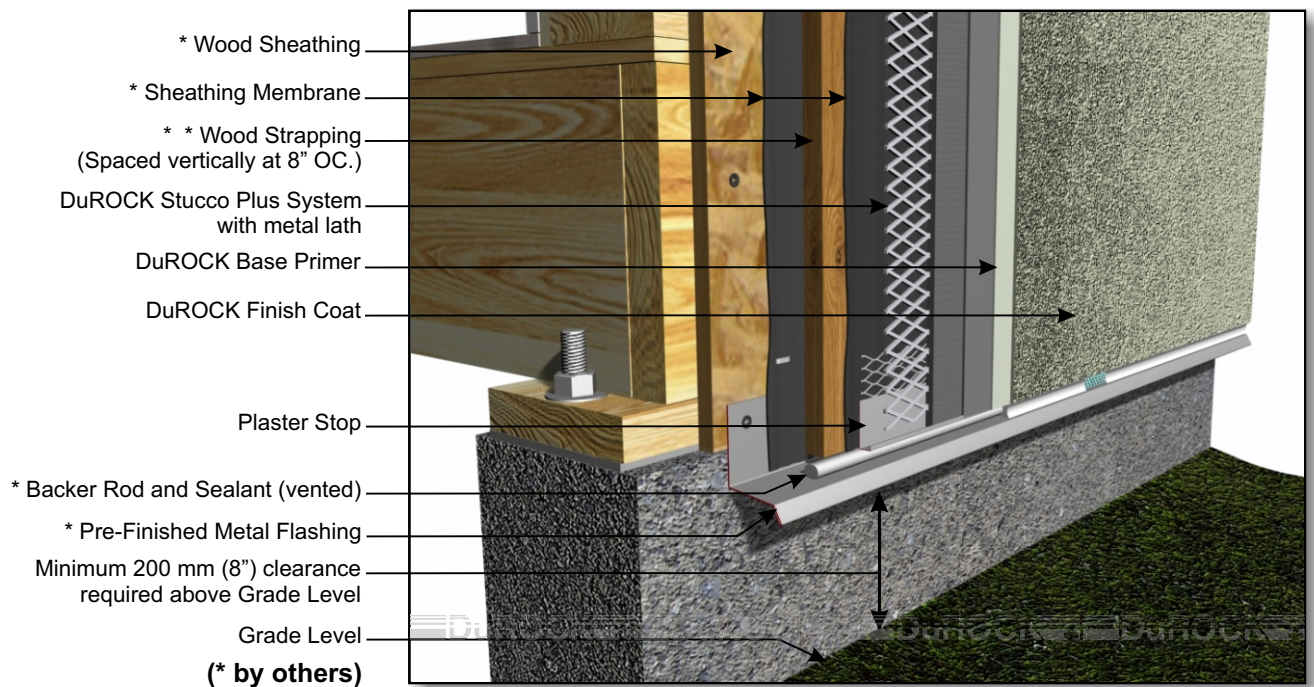


# DuROCK Stucco Plus

## Polymer-Enhanced Stucco System



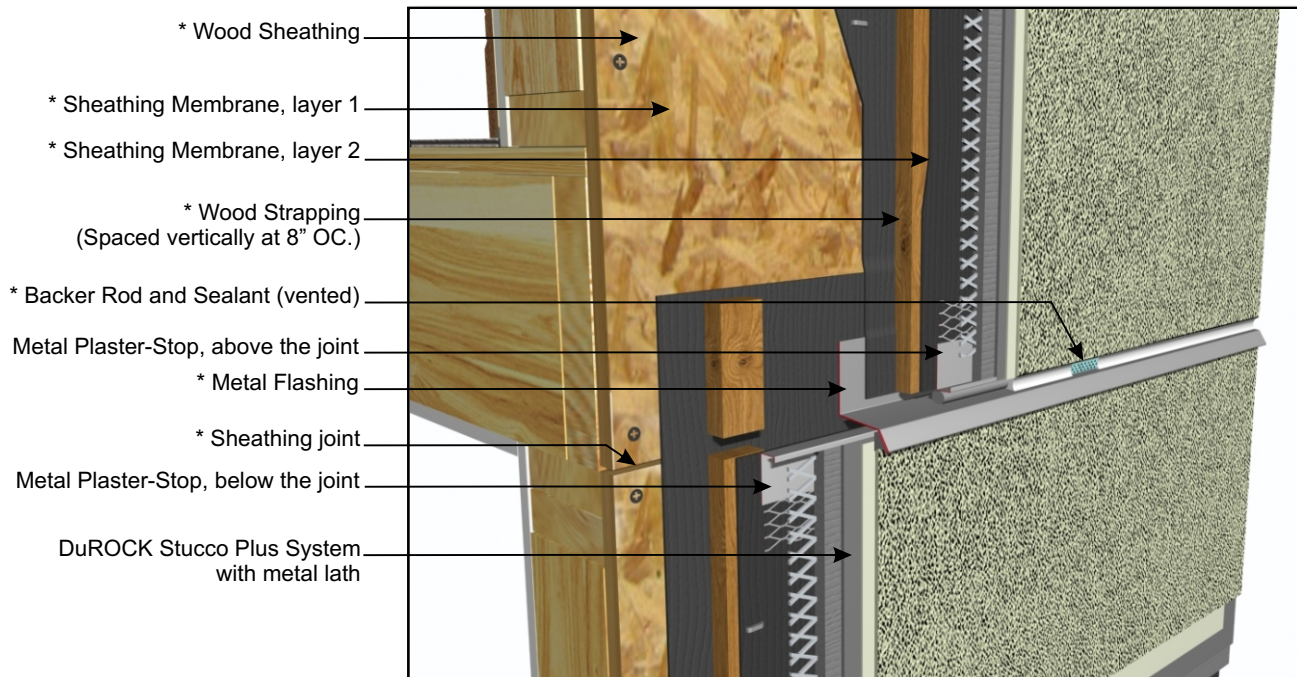
**STUCCO PLUS RS (03) WINDOW JAMB**



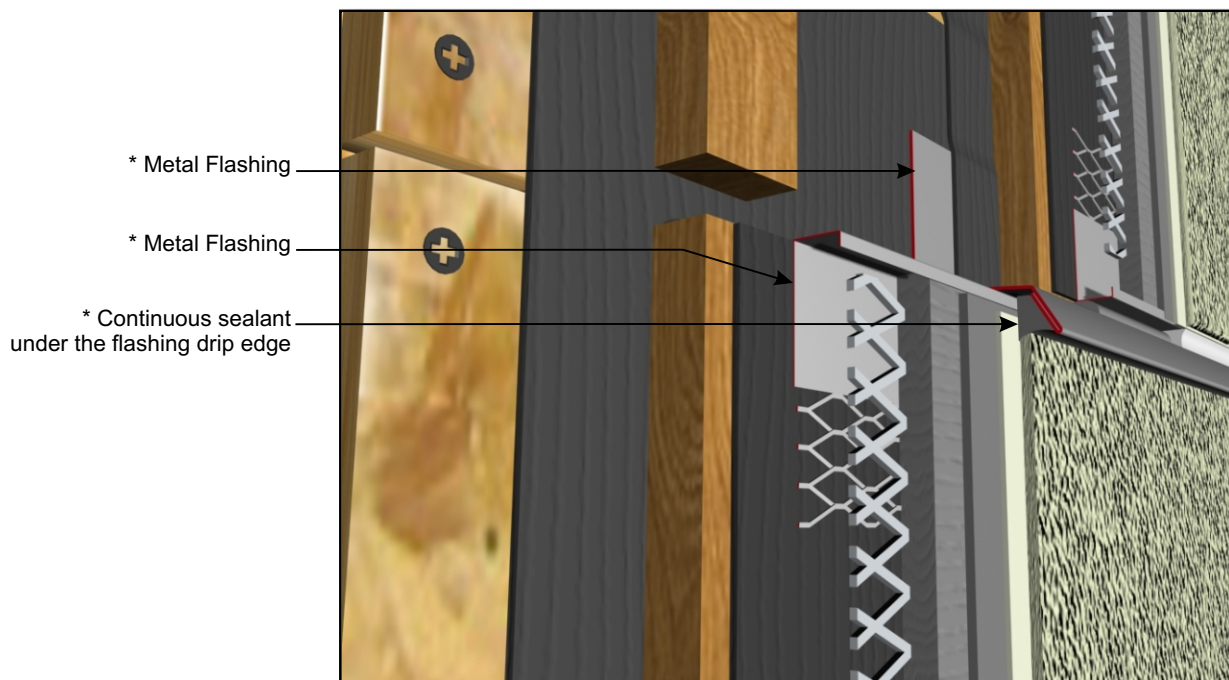
**STUCCO PLUS RS (04) TERMINATION AT GRADE**

# DuROCK Stucco Plus

## Polymer-Enhanced Stucco System



**STUCCO PLUS RS (05)**  
HORIZONTAL EXPANSION JOINT (VIEW A)



(\* by others)

**STUCCO PLUS RS (05A)**  
HORIZONTAL EXPANSION JOINT (VIEW B)