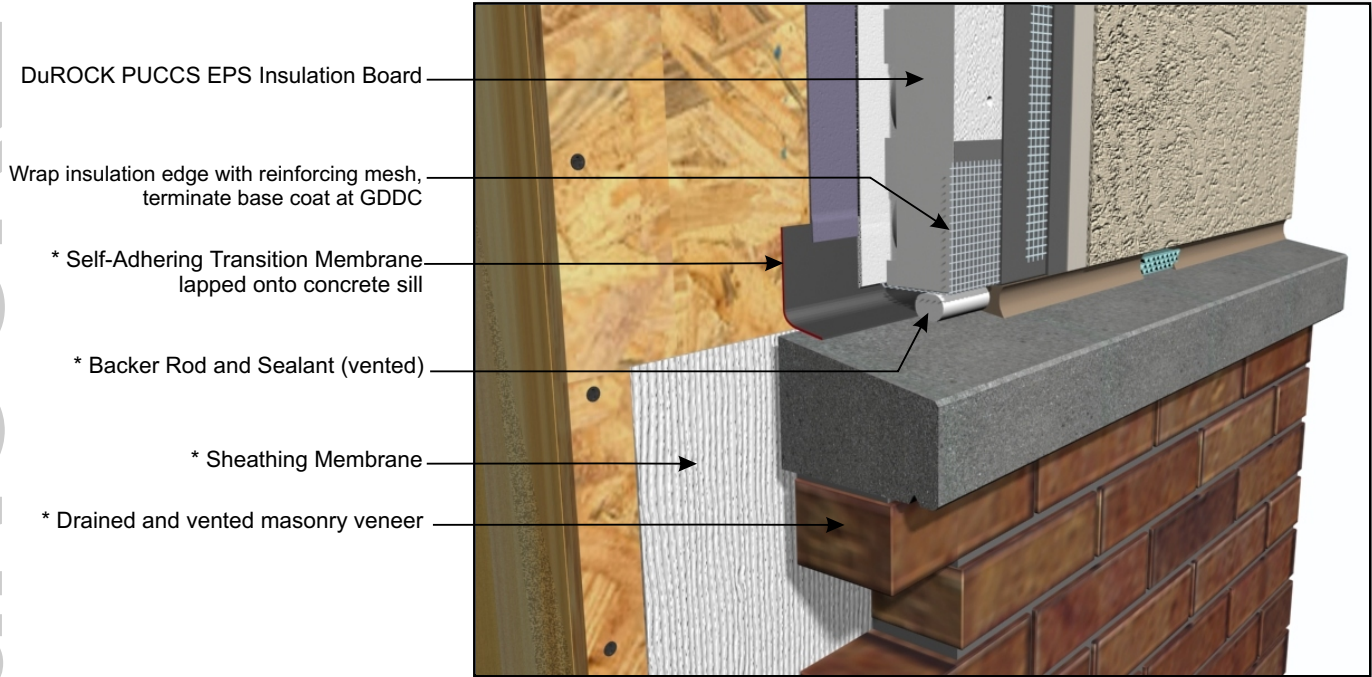


DuROCK PUCCS EIFS

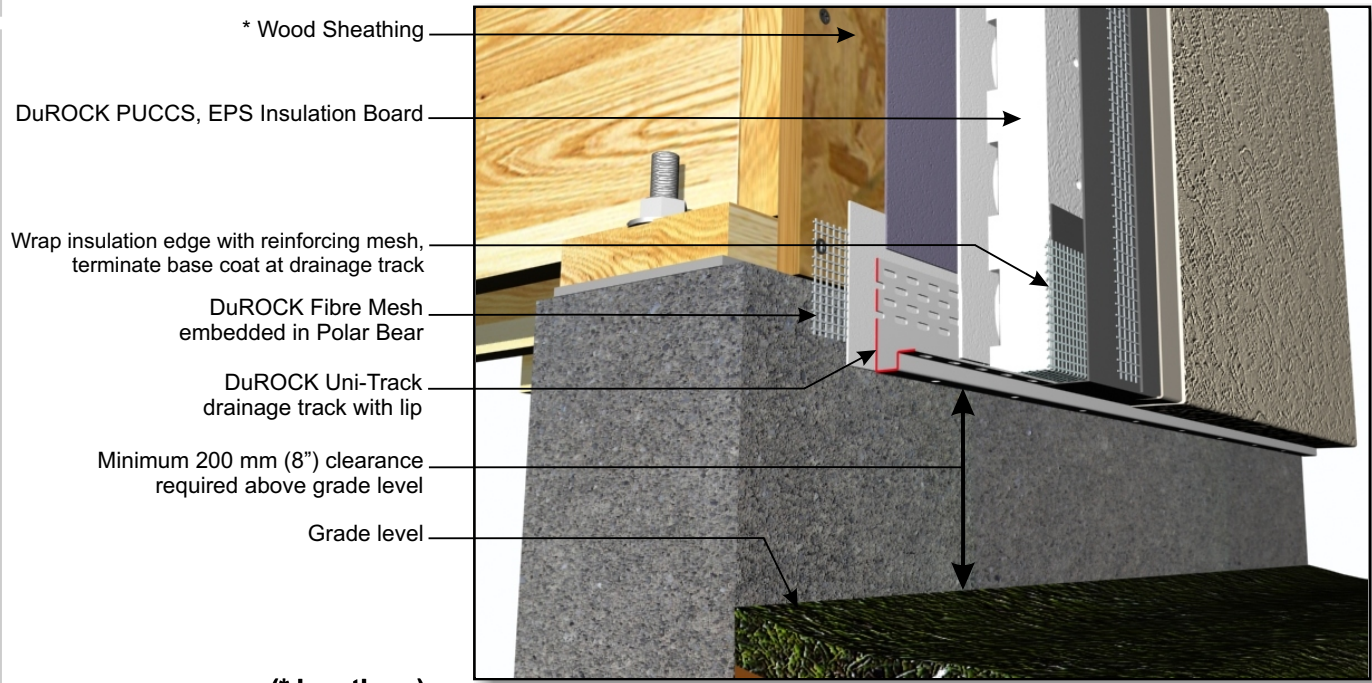
Exterior Insulation Finish System for Low Rise Residential Construction

ARCHITECTURAL FINISHING SYSTEMS



- DuROCK PUCCS EPS Insulation Board
- Wrap insulation edge with reinforcing mesh, terminate base coat at GDDC
- * Self-Adhering Transition Membrane lapped onto concrete sill
- * Backer Rod and Sealant (vented)
- * Sheathing Membrane
- * Drained and vented masonry veneer

PUCCS-LRRC (13)
TERMINATION AT CONCRETE SILL WITH MEMBRANE (DRAINED)



- * Wood Sheathing
- DuROCK PUCCS, EPS Insulation Board
- Wrap insulation edge with reinforcing mesh, terminate base coat at drainage track
- DuROCK Fibre Mesh embedded in Polar Bear
- DuROCK Uni-Track drainage track with lip
- Minimum 200 mm (8") clearance required above grade level
- Grade level

(* by others)

PUCCS-LRRC (14)
TERMINATION AT GRADE