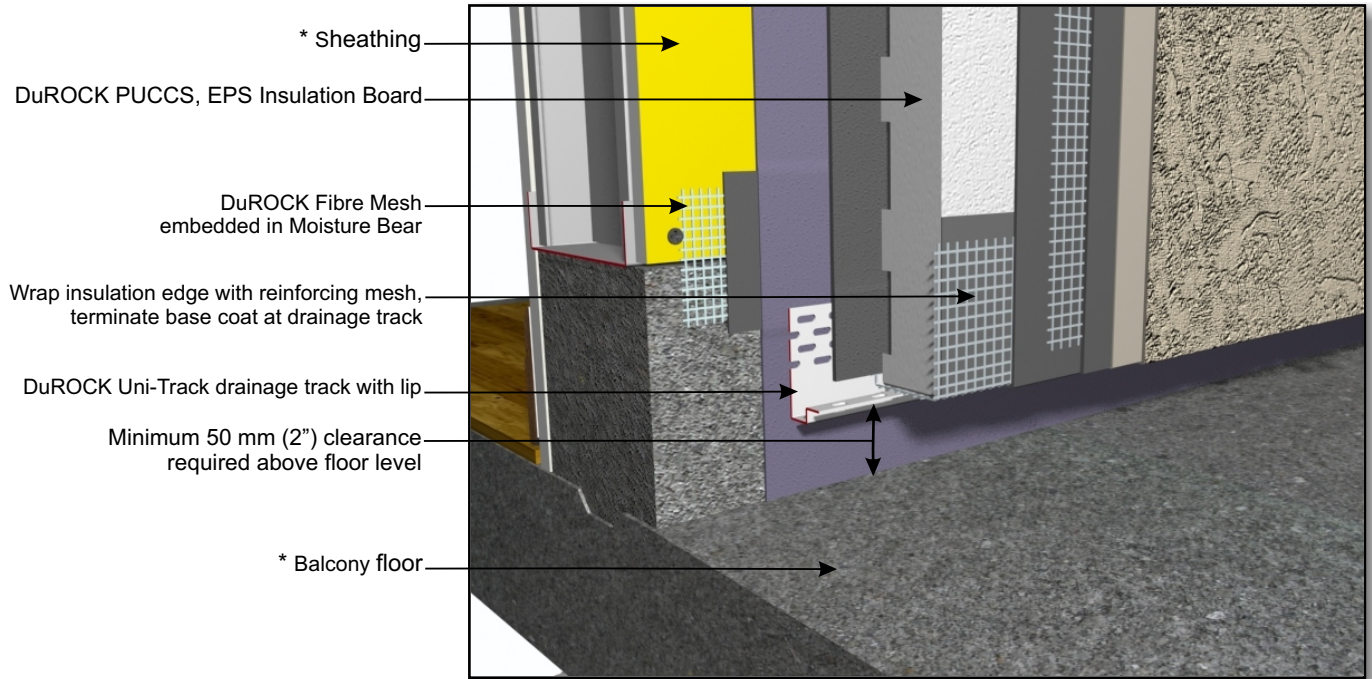


# DuROCK PUCCS EIFS

## Exterior Insulation Finish System for Commercial and High Rise Construction

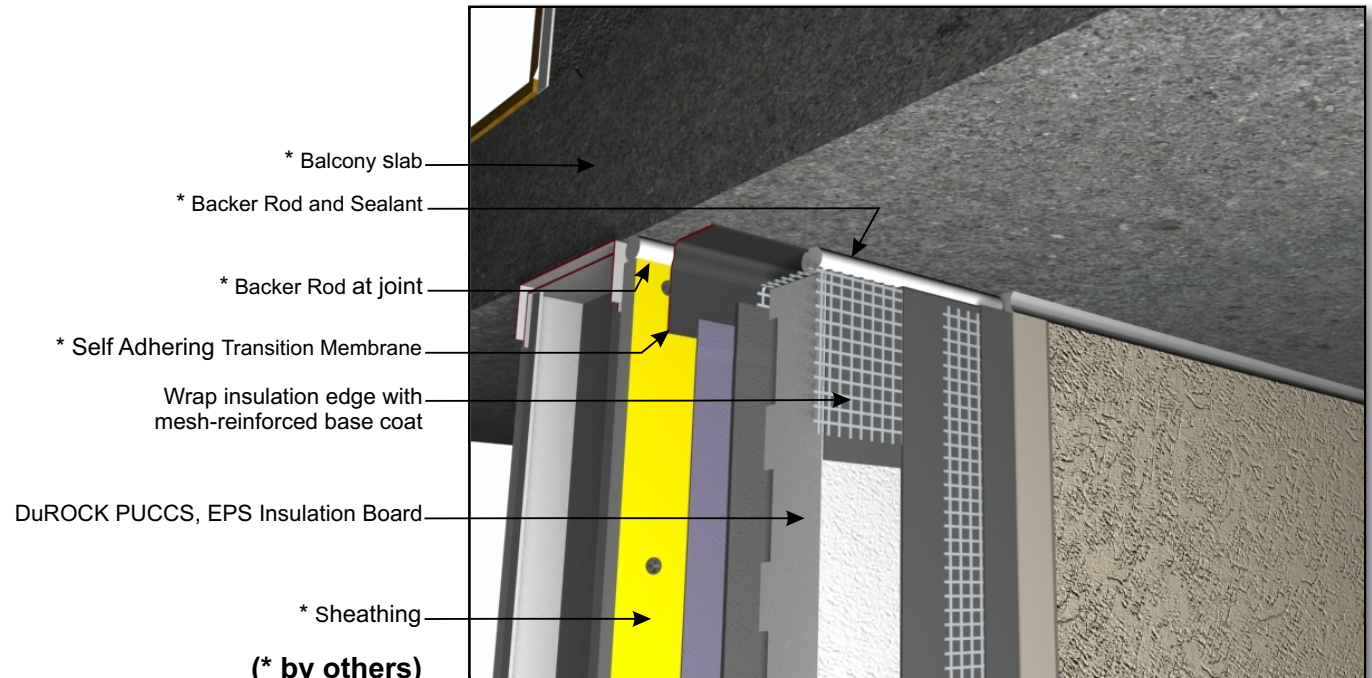


**DuROCK**  
 ARCHITECTURAL FINISHING SYSTEMS



- \* Sheathing
- DuROCK PUCCS, EPS Insulation Board
- DuROCK Fibre Mesh embedded in Moisture Bear
- Wrap insulation edge with reinforcing mesh, terminate base coat at drainage track
- DuROCK Uni-Track drainage track with lip
- Minimum 50 mm (2") clearance required above floor level
- \* Balcony floor

**CHRC D09, TERMINATION AT BALCONY (ABOVE SLAB)**



- \* Balcony Slab
- \* Backer Rod and Sealant
- \* Backer Rod at joint
- \* Self Adhering Transition Membrane
- Wrap insulation edge with mesh-reinforced base coat
- DuROCK PUCCS, EPS Insulation Board
- \* Sheathing
- (\* by others)

**CHRC D09-A, TERMINATION AT BALCONY (BELOW SLAB)**