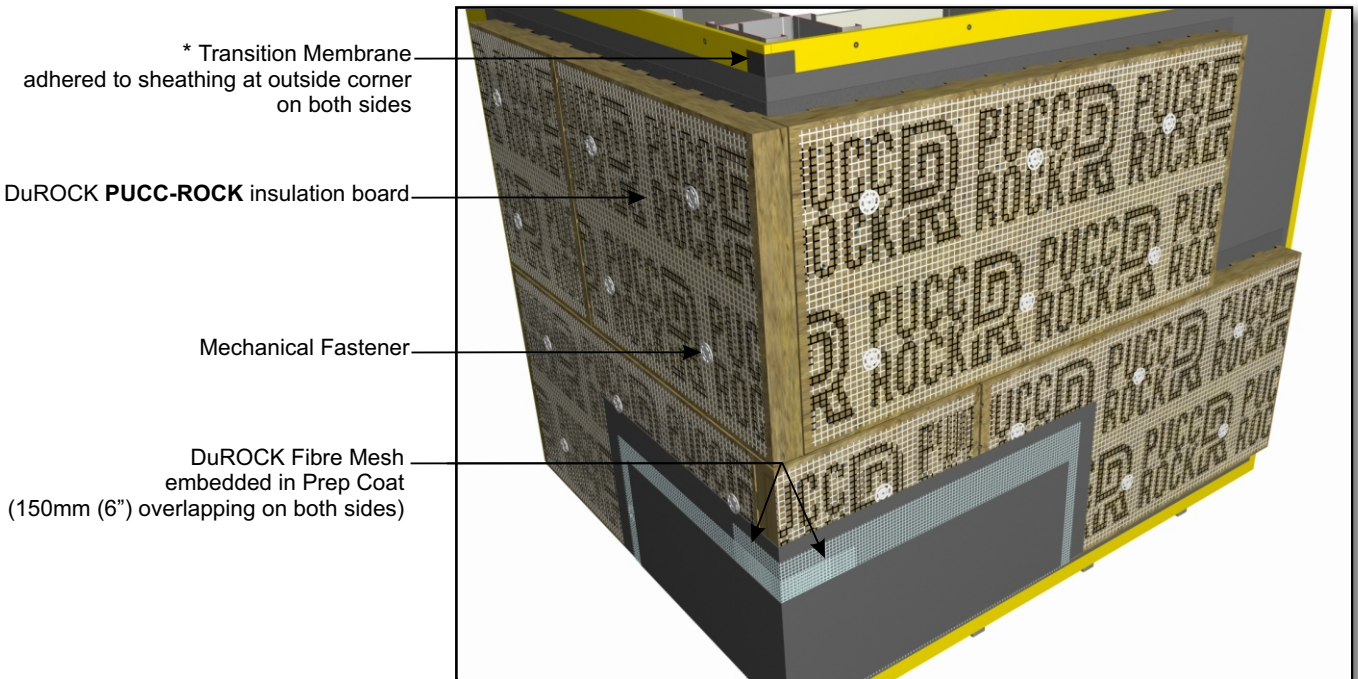


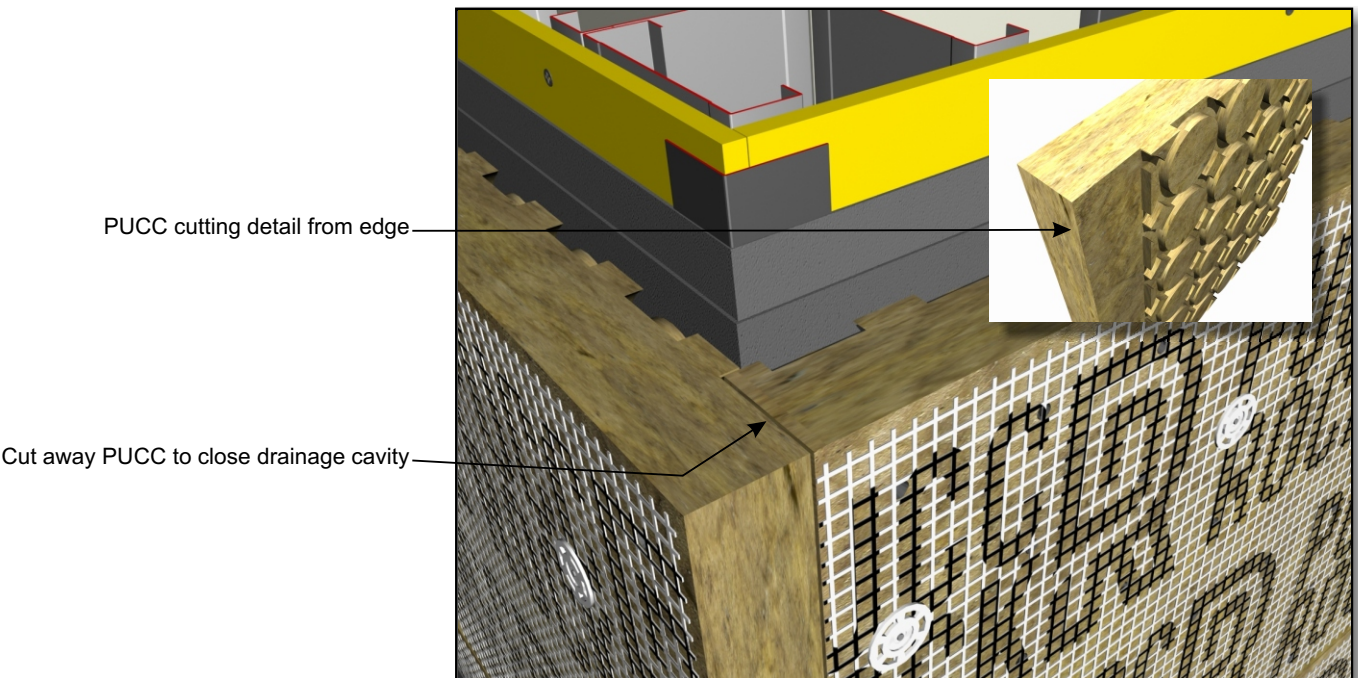
**PUCCS NC Non-Combustible EIFS Cladding
 with PUCC-ROCK GDDC Mineral Wool Insulation**

DuROCK
 ARCHITECTURAL FINISHING SYSTEMS



- * Transition Membrane adhered to sheathing at outside corner on both sides
- DuROCK **PUCC-ROCK** insulation board
- Mechanical Fastener
- DuROCK Fibre Mesh embedded in Prep Coat (150mm (6")) overlapping on both sides

D10, PUCC-ROCK OUTSIDE CORNER INTERLOCKING DETAIL



- Pucc cutting detail from edge
- Cut away Pucc to close drainage cavity

D10-A, PUCC-ROCK OUTSIDE CORNER JOINT

(* by others)