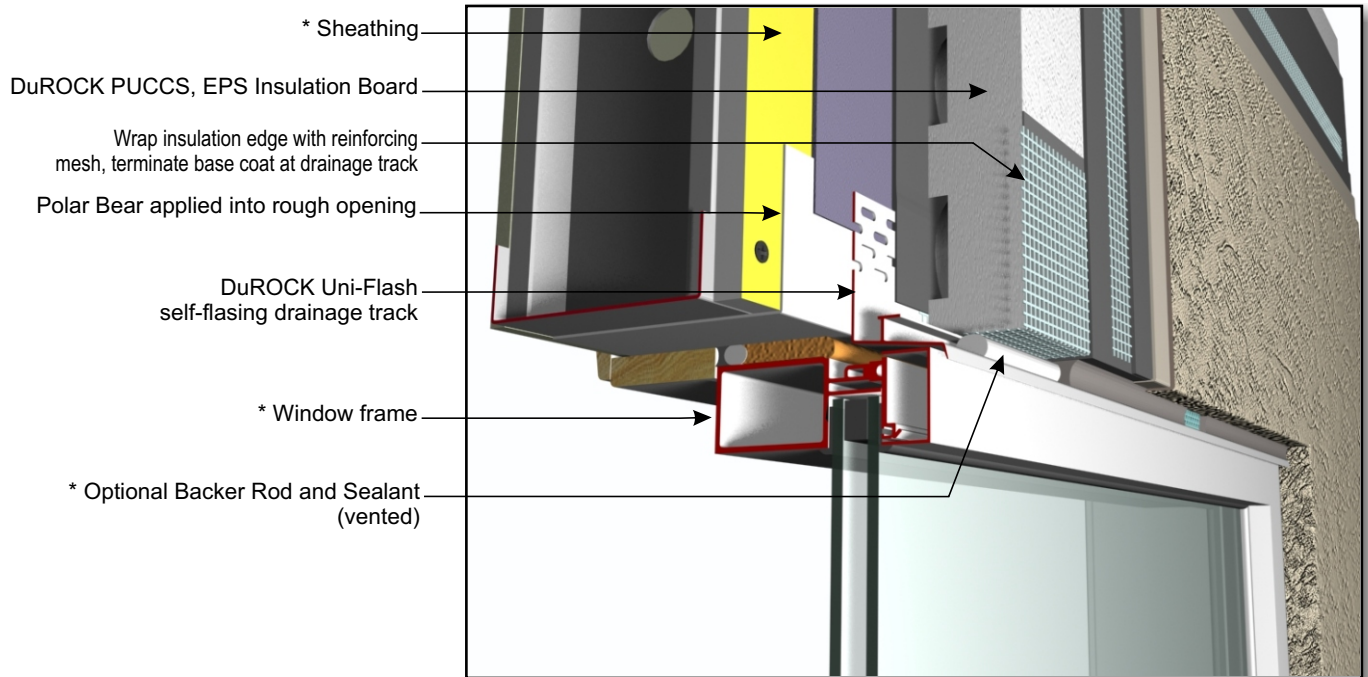


# DuROCK PUCCS EIFS

## Exterior Insulation Finish System for Commercial and High Rise Construction

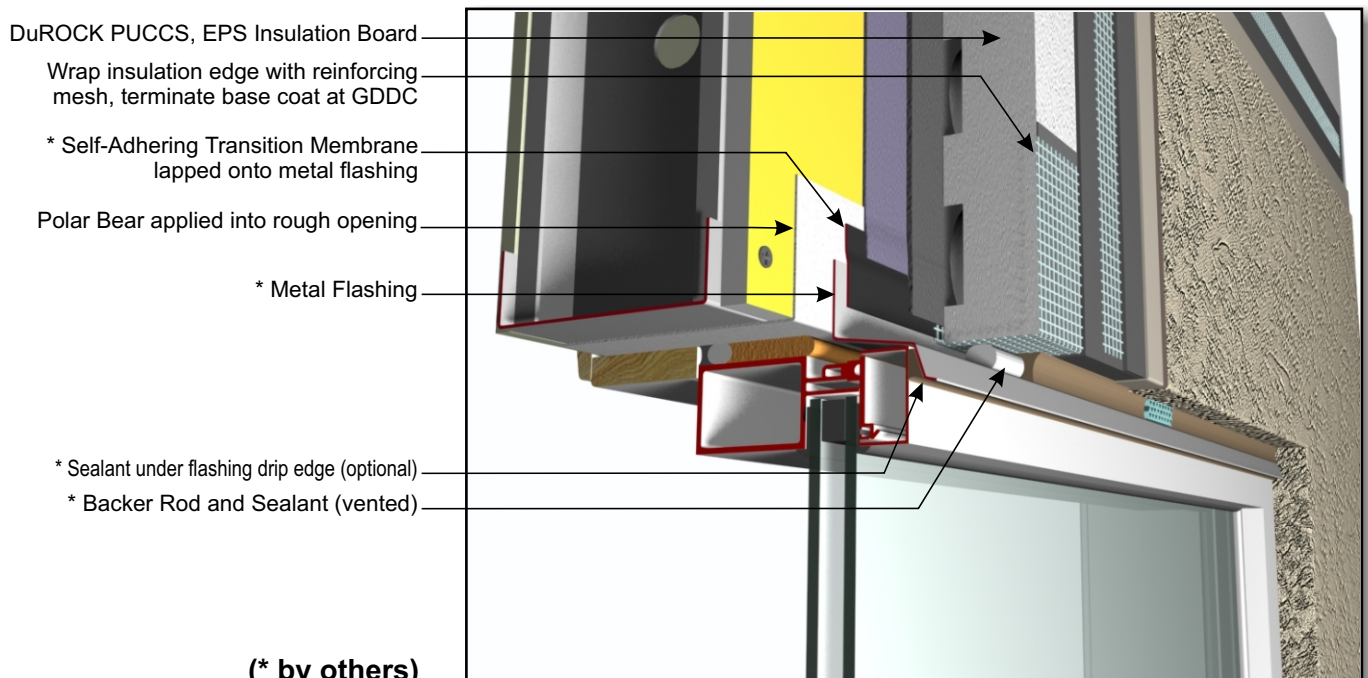


**DuROCK**  
 ARCHITECTURAL FINISHING SYSTEMS



- \* Sheathing
- DuROCK PUCCS, EPS Insulation Board
- Wrap insulation edge with reinforcing mesh, terminate base coat at drainage track
- Polar Bear applied into rough opening
- DuROCK Uni-Flash self-flashing drainage track
- \* Window frame
- \* Optional Backer Rod and Sealant (vented)

**CHRC D01, WINDOW HEADER WITH DuROCK UNI-FLASH**



- DuROCK PUCCS, EPS Insulation Board
- Wrap insulation edge with reinforcing mesh, terminate base coat at GDDC
- \* Self-Adhering Transition Membrane lapped onto metal flashing
- Polar Bear applied into rough opening
- \* Metal Flashing
- \* Sealant under flashing drip edge (optional)
- \* Backer Rod and Sealant (vented)

(\* by others)

**CHRC D02, WINDOW HEADER WITH METAL FLASHING**