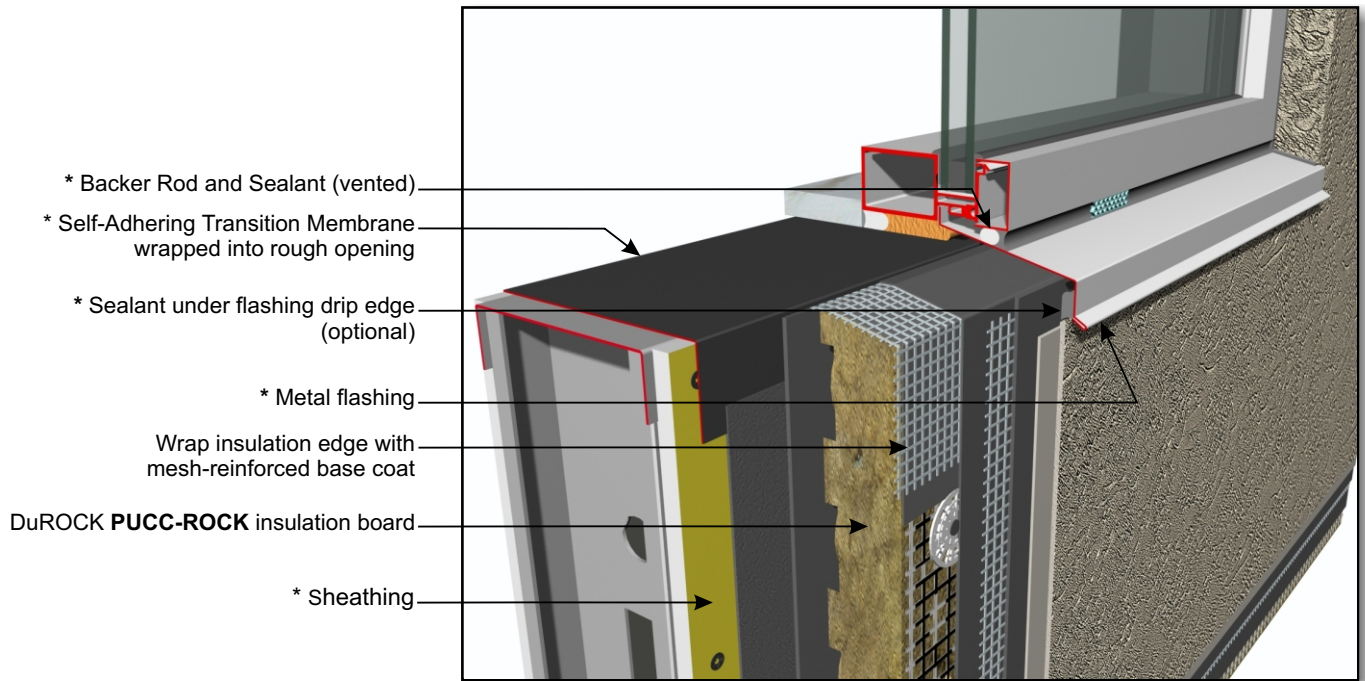


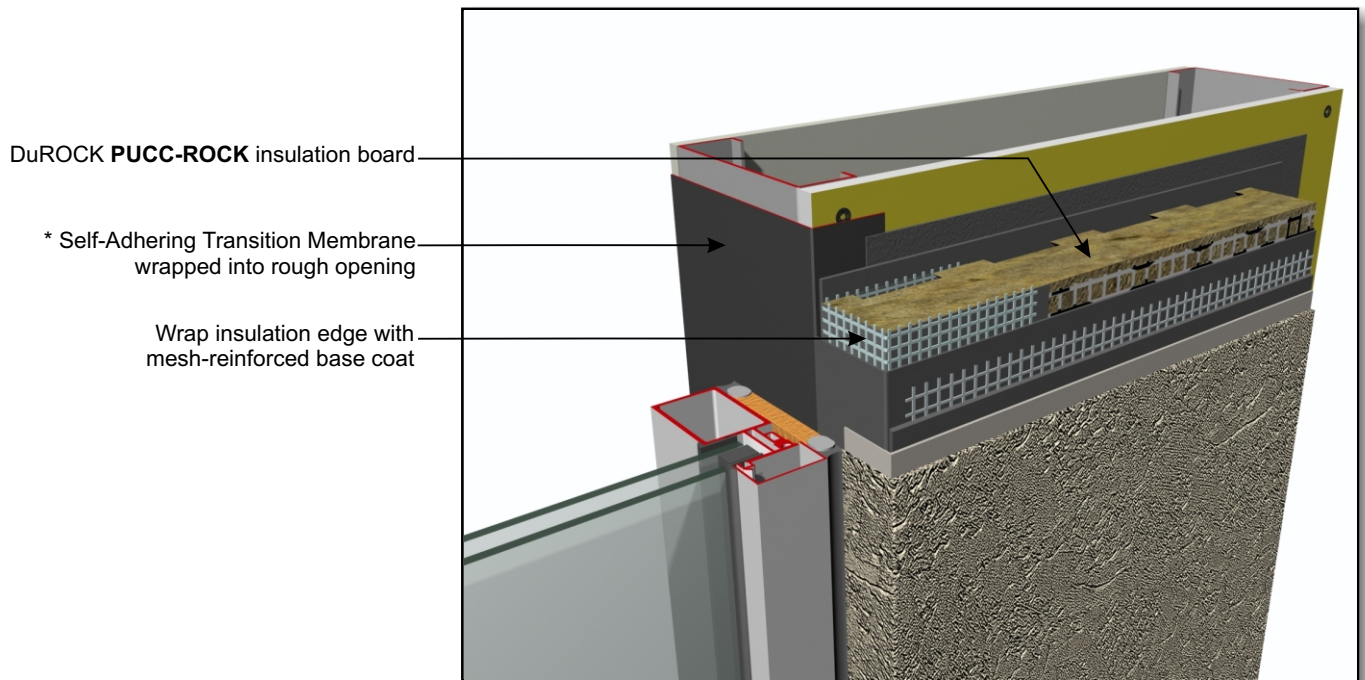
**PUCCS NC Non-Combustible EIFS Cladding  
with PUCC-ROCK GDDC Mineral Wool Insulation**

**DuROCK**  
 ARCHITECTURAL FINISHING SYSTEMS



- \* Backer Rod and Sealant (vented)
- \* Self-Adhering Transition Membrane wrapped into rough opening
- \* Sealant under flashing drip edge (optional)
- \* Metal flashing
- Wrap insulation edge with mesh-reinforced base coat
- DuROCK **PUCC-ROCK** insulation board
- \* Sheathing

**D03, TERMINATION AT WINDOW SILL**



- DuROCK **PUCC-ROCK** insulation board
- \* Self-Adhering Transition Membrane wrapped into rough opening
- Wrap insulation edge with mesh-reinforced base coat

**D04, TERMINATION AT WINDOW JAMB**

(\* by others)