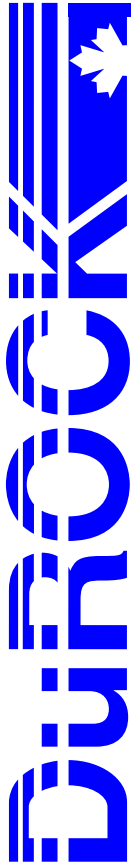


DuROCK PUCCS EIFS

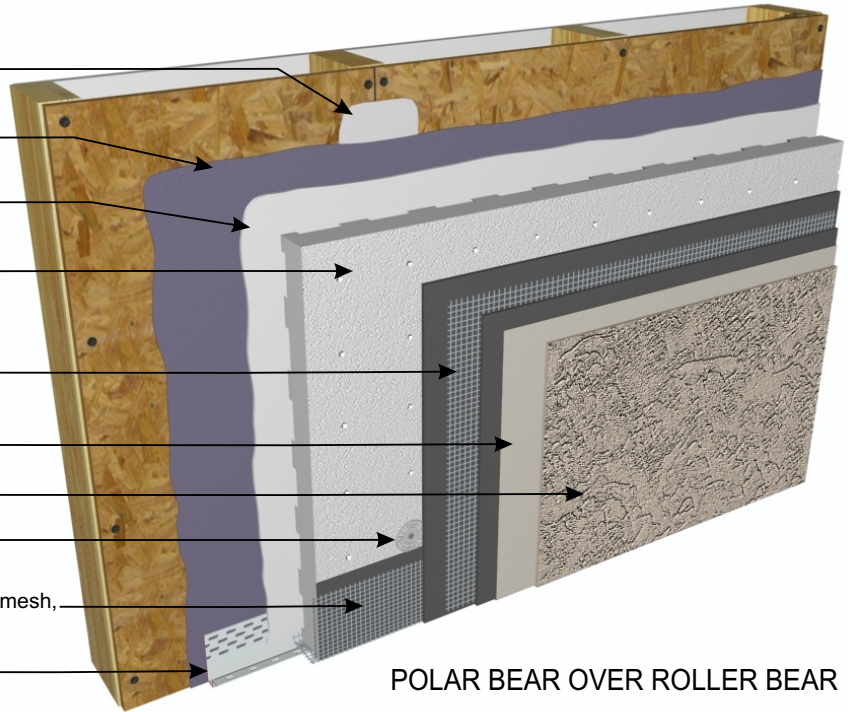
Exterior Insulation Finish System for Low Rise Residential Construction



CCMC No. 12969-R

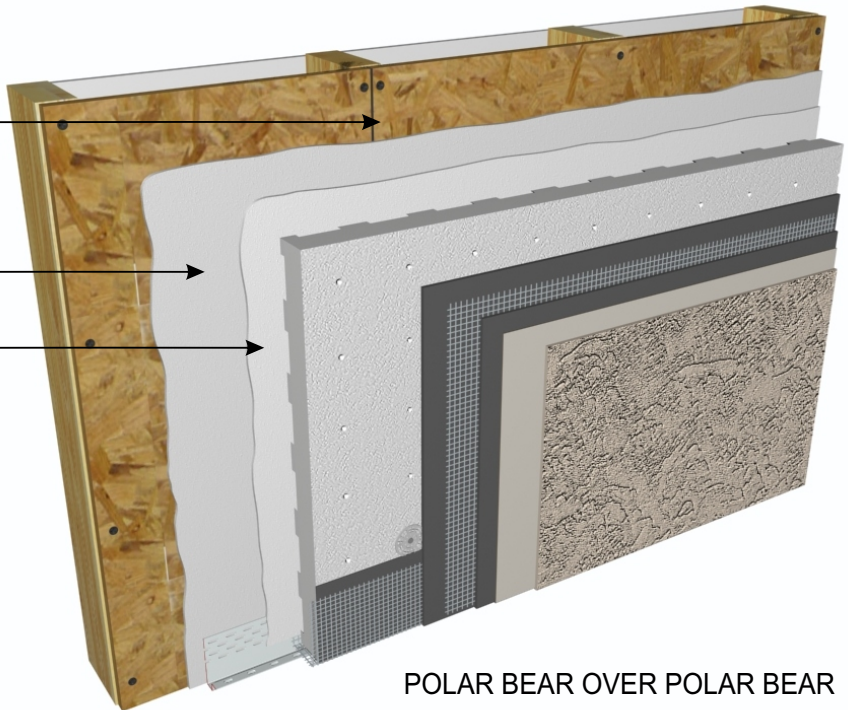


- DuROCK Polar Bear joint treatment
- DuROCK Roller Bear Moisture Barrier
- DuROCK Polar Bear Moisture Barrier/Adhesive
- PUCCS EPS Insulation with 10mm Geometrically Defined Drainage Cavity (GDDC)
- DuROCK Reinforcing Mesh embedded in Prep Coat
- DuROCK Base Primer (optional)
- DuROCK Finish Coat
- DuROCK Mechanical Fastener
- Wrap insulation edge with reinforcing mesh, terminate base coat at drainage track
- DuROCK Uni-Track drainage track with lip



POLAR BEAR OVER ROLLER BEAR

- No joint treatment required
- DuROCK Polar Bear Air/Moisture Barrier
- DuROCK Polar Bear Moisture Barrier/Adhesive



POLAR BEAR OVER POLAR BEAR

Note: For clarity of illustration all details depict Roller Bear as the first coat moisture barrier and Polar Bear as the second coat moisture barrier/adhesive.