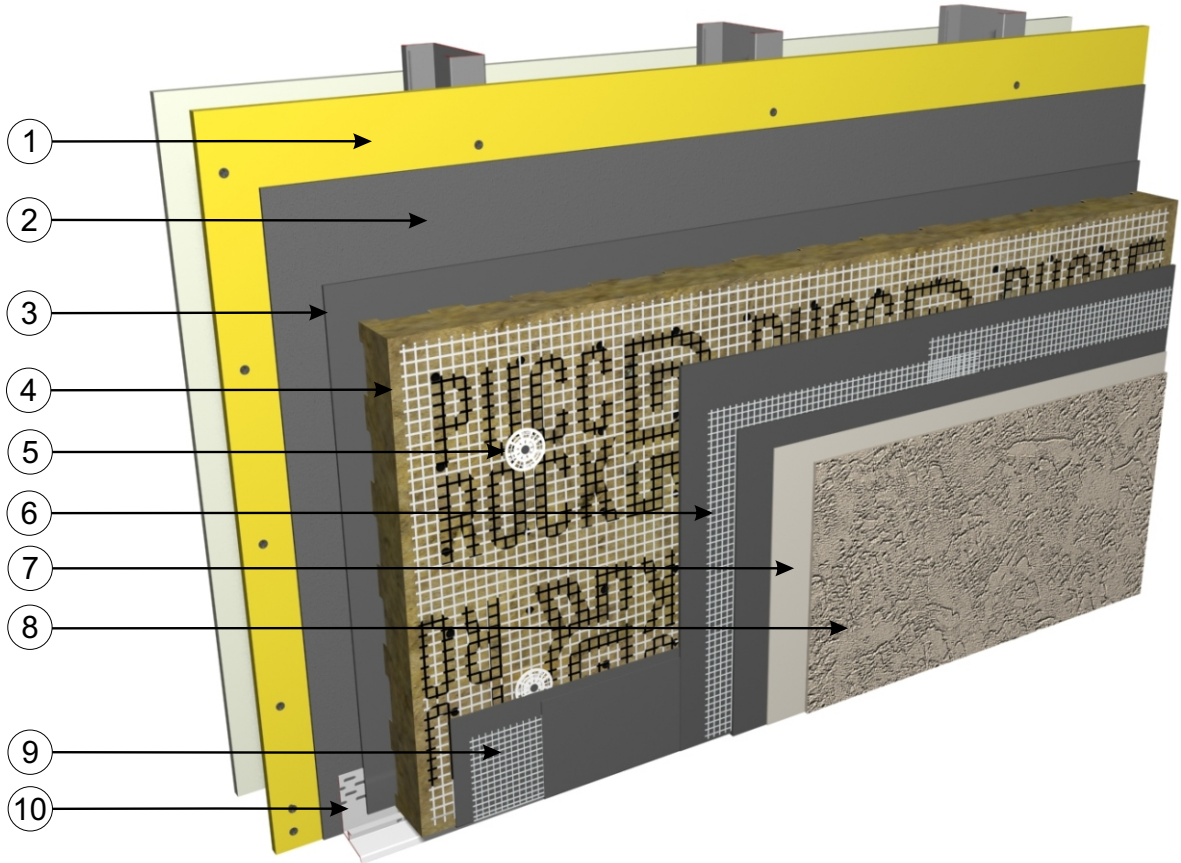


(PATENT PENDING)



PUCCS NC STANDARD WALL SECTION



- ① *Sheathing
- ② DuROCK Air/Moisture Barrier
- ③ DuROCK Moisture Barrier/Adhesive
- ④ DuROCK **PUC-ROCK** Mineral Wool Insulation Board with integral reinforcing mesh
- ⑤ Mechanical Fastener through the dimple in the centre of the PUC and into the framing
- ⑥ DuROCK 5oz. Reinforcing Mesh embedded in DuROCK Base Coat
- ⑦ DuROCK Base Primer
- ⑧ DuROCK Finish Coat
- ⑨ Back-Wrapped Starter Mesh
- ⑩ DuROCK Uni-Flash self-flashing drainage track

(* by others)

DuROCK
ARCHITECTURAL FINISHING SYSTEMS



Alfacing International Limited
101 B.ROYTEC ROAD, WOODBRIDGE, ON, L4L 8A9
TEL: (905) 856-0133, FAX: (905) 856-9654
www.durock.com

ARCHITECTURAL FINISHING SYSTEMS

This detail complements the corresponding system specification and illustrates the system configuration for the depicted construction. Visit www.durock.com for the latest revisions and contact DuRock for project-specific details to suit conditions other than those depicted. DuRock assumes no liability for the architecture, design, engineering, or workmanship of any project.

PUCCS-NC
Revision 01: Nov 2019
Issued: Jan 2019
COVER