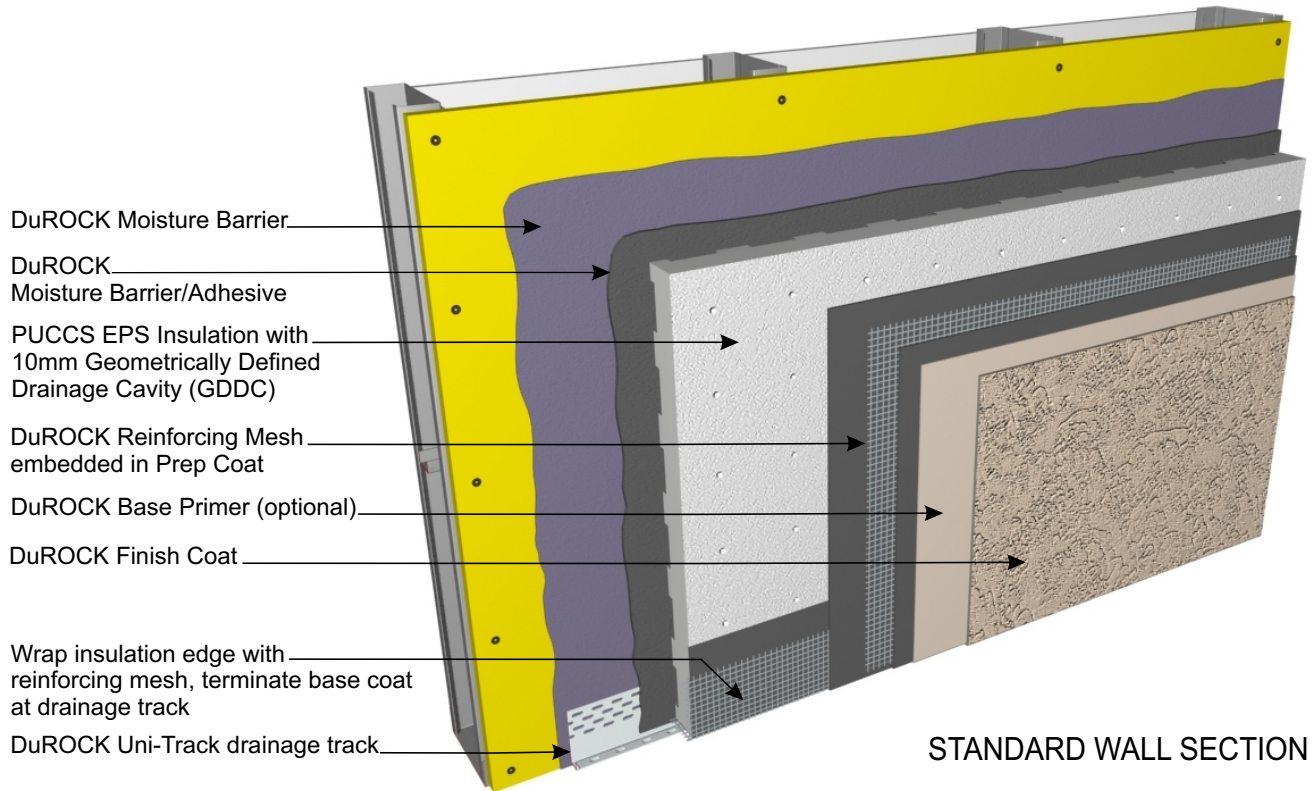


# DuROCK PUCCS EIFS

## Exterior Insulation Finish System for Commercial and High Rise Construction

**PUCCS**™  
Pressure-Utilized Compartmented Cavity System  
**CCMC No. 12969-R**

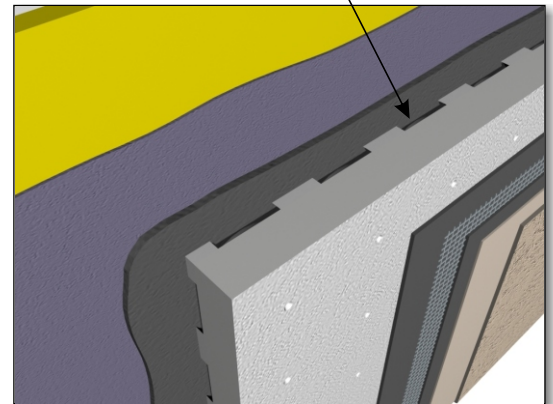
**DuROCK**  
ARCHITECTURAL FINISHING SYSTEMS



PUCCS is continuous insulation cladding that includes a Geometrically Defined Drainage Cavity (GDDC) that is 10 mm deep and 37% open. PUCCS has been evaluated by CCMC for compliance with the National Building Code of Canada, PUCCS complies with the CAN/ULC-S716.1 EIFS Materials and Systems test standard, and PUCCS satisfies the fire protection test requirements in National Building Code of Canada Article 3.1.5.5 when tested in accordance with CAN/ULC-S134 and in Article 3.2.3.8 when tested in accordance with CAN/ULC-S101

For clarity of illustration all details depict Roller Bear as the first coat moisture barrier and Cement Bear as the second coat moisture barrier. Please refer to the following page for alternative moisture barrier combinations.

Moisture drainage through 10mm Geometrically Defined Drainage Cavity (GDDC)



Alfacing International Limited  
101 B.ROYTEC ROAD, WOODBRIDGE, ON. L4L 8A9  
TEL: (905) 856-0133, FAX: (905) 856-9654  
[www.durock.com](http://www.durock.com)

ARCHITECTURAL FINISHING SYSTEMS

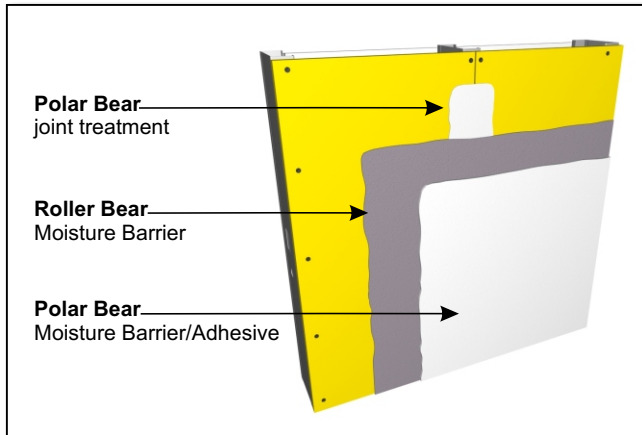
This detail complements the corresponding system specification and illustrates the system configuration for the depicted construction. Visit [www.durock.com](http://www.durock.com) for the latest revisions and contact DuROCK for project-specific details to suit conditions other than those depicted. DuROCK assumes no liability for the architecture, design, engineering, or workmanship of any project.

**PUCCS-CHRC**

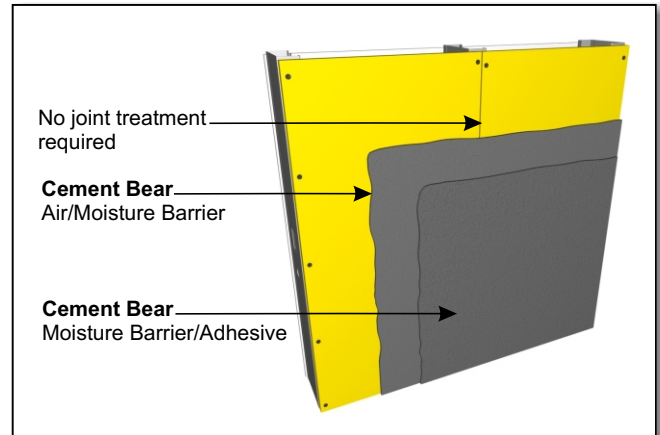
Last revise: Dec 2018

Issued: Mar 2006

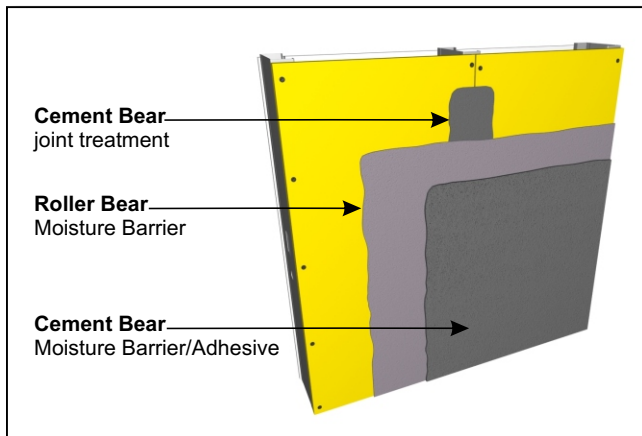
**COVER**



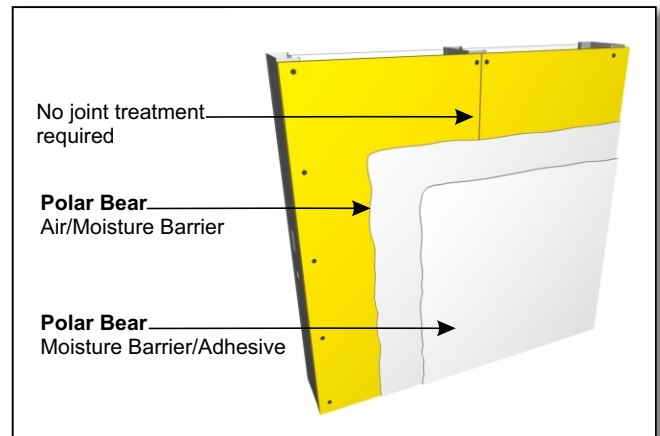
**01, POLAR BEAR OVER ROLLER BEAR**



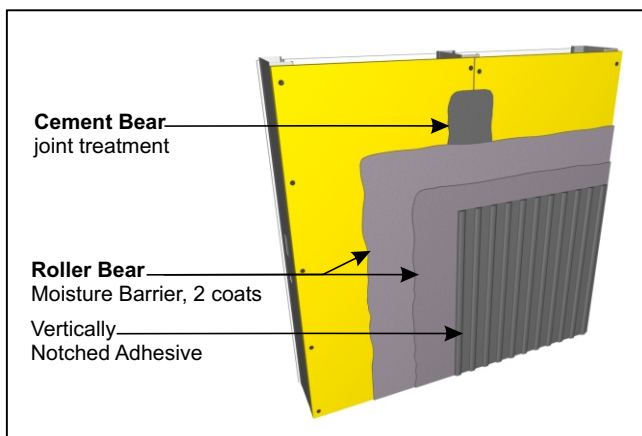
**04, CEMENT BEAR OVER CEMENT BEAR**



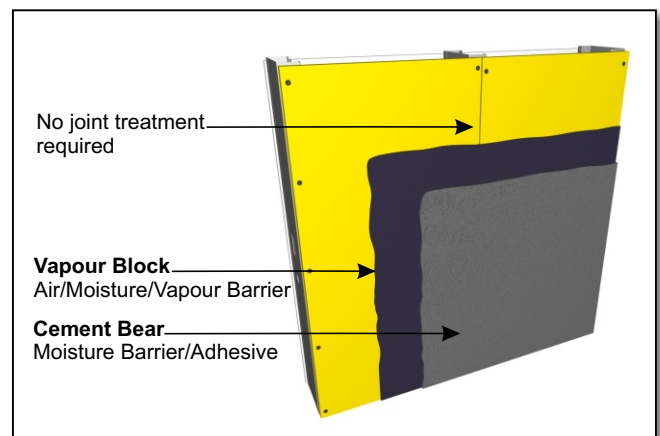
**02, CEMENT BEAR OVER ROLLER BEAR**



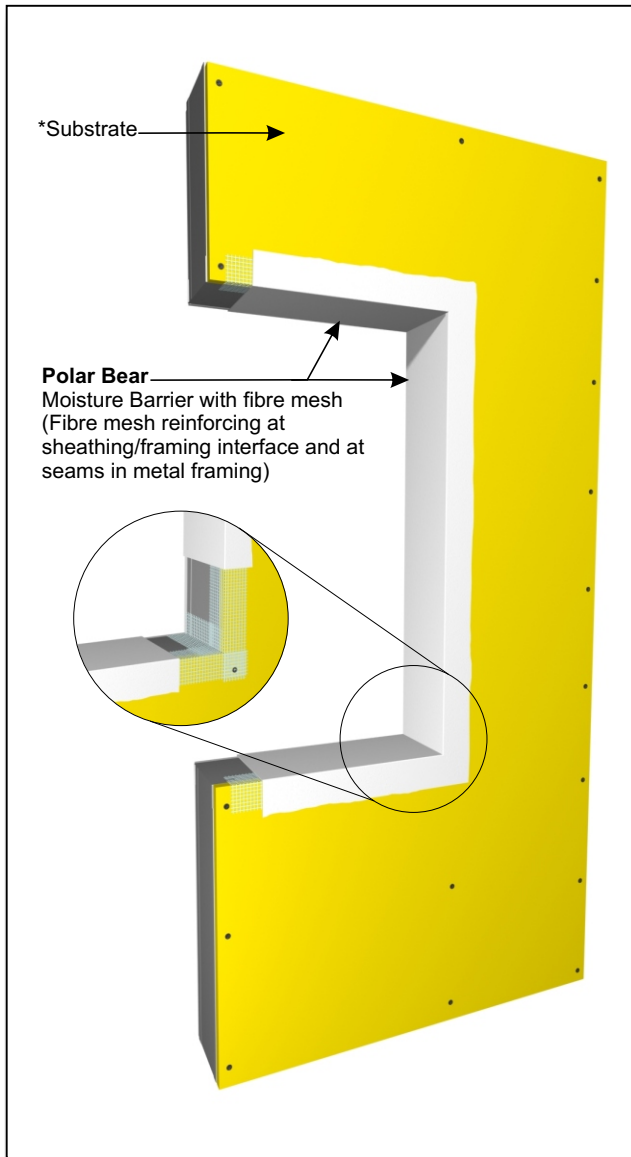
**05, POLAR BEAR OVER POLAR BEAR**



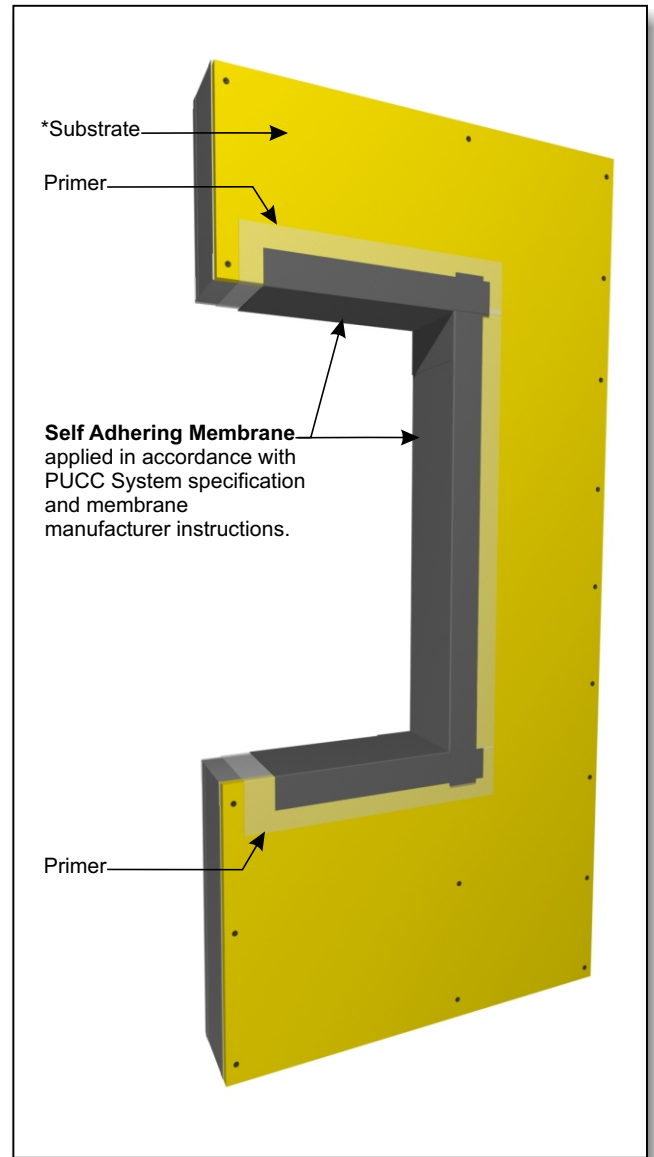
**03, ROLLER BEAR OVER ROLLER BEAR**



**06, CEMENT BEAR OVER VAPOUR BLOCK**



**POLAR BEAR AIR/MOISTURE BARRIER  
ONTO WINDOW ROUGH OPENING**



**SELF ADHERING MEMBRANE  
ONTO WINDOW ROUGH OPENING**

Either alternative opening treatment may be used in conjunction with any of the moisture barrier/adhesive combinations. Refer to PUCC System specifications for further information.

For clarity of illustration all details depict Polar Bear only.

(\* by others)

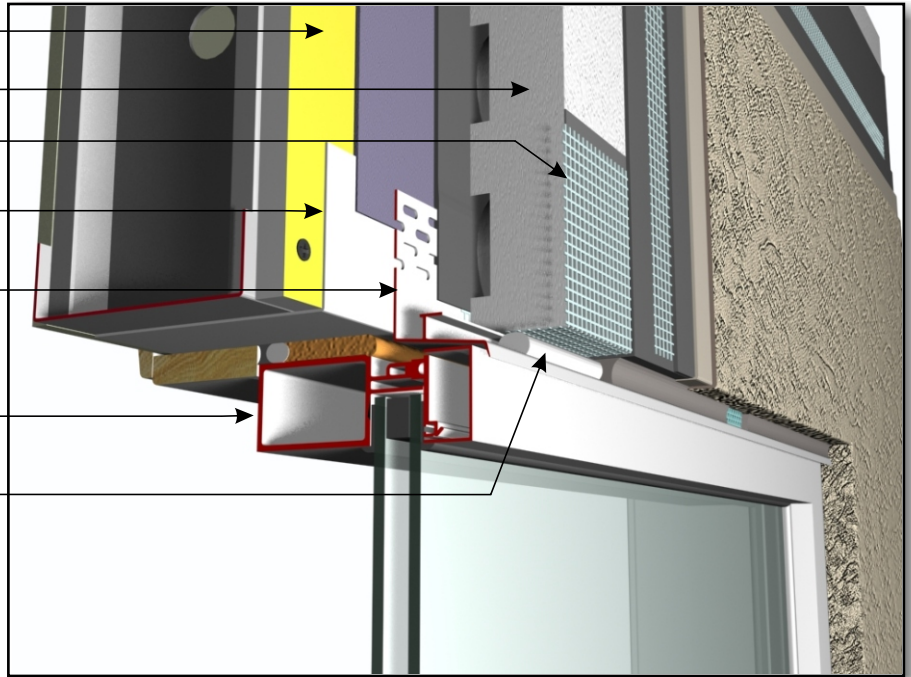


# DuROCK PUCCS EIFS

## Exterior Insulation Finish System for Commercial and High Rise Construction

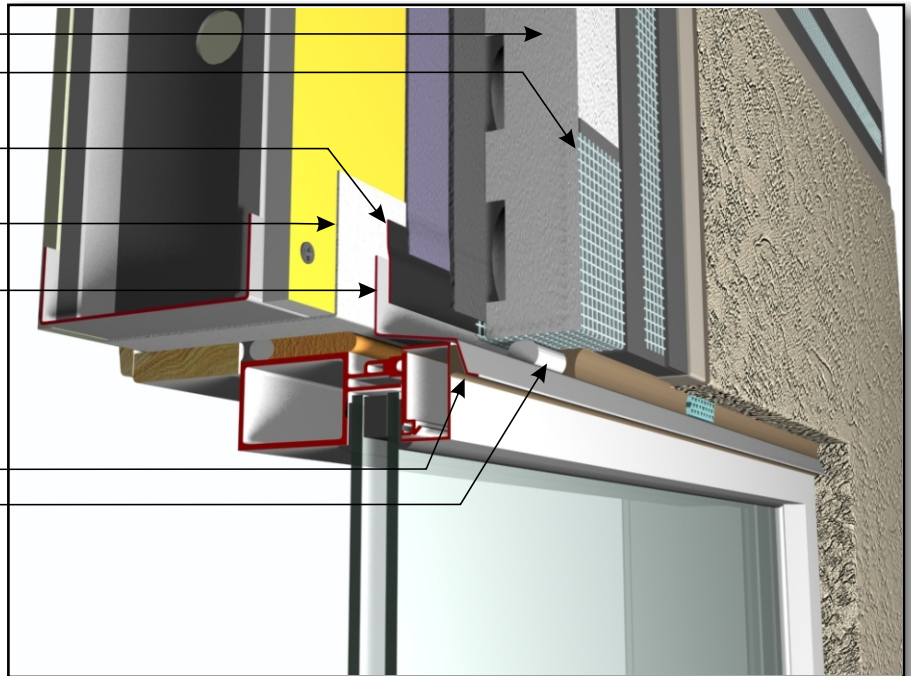


- \* Sheathing
- DuROCK PUCCS, EPS Insulation Board
- Wrap insulation edge with reinforcing mesh, terminate base coat at drainage track
- Polar Bear applied into rough opening
- DuROCK Uni-Flash self-flashing drainage track
- \* Window frame
- \* Optional Backer Rod and Sealant (vented)



**CHRC D01, WINDOW HEADER WITH DuROCK UNI-FLASH**

- DuROCK PUCCS, EPS Insulation Board
- Wrap insulation edge with reinforcing mesh, terminate base coat at GDDC
- \* Self-Adhering Transition Membrane lapped onto metal flashing
- Polar Bear applied into rough opening
- \* Metal Flashing
- \* Sealant under flashing drip edge (optional)
- \* Backer Rod and Sealant (vented)

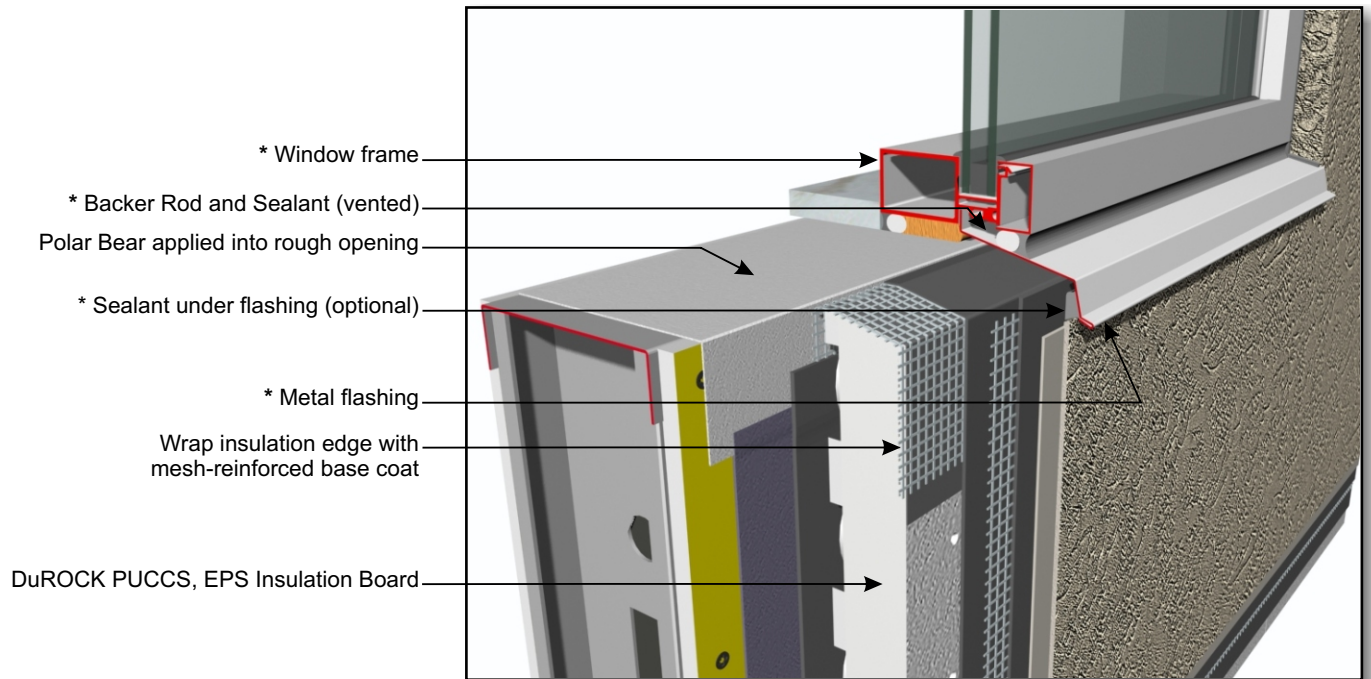


(\* by others)

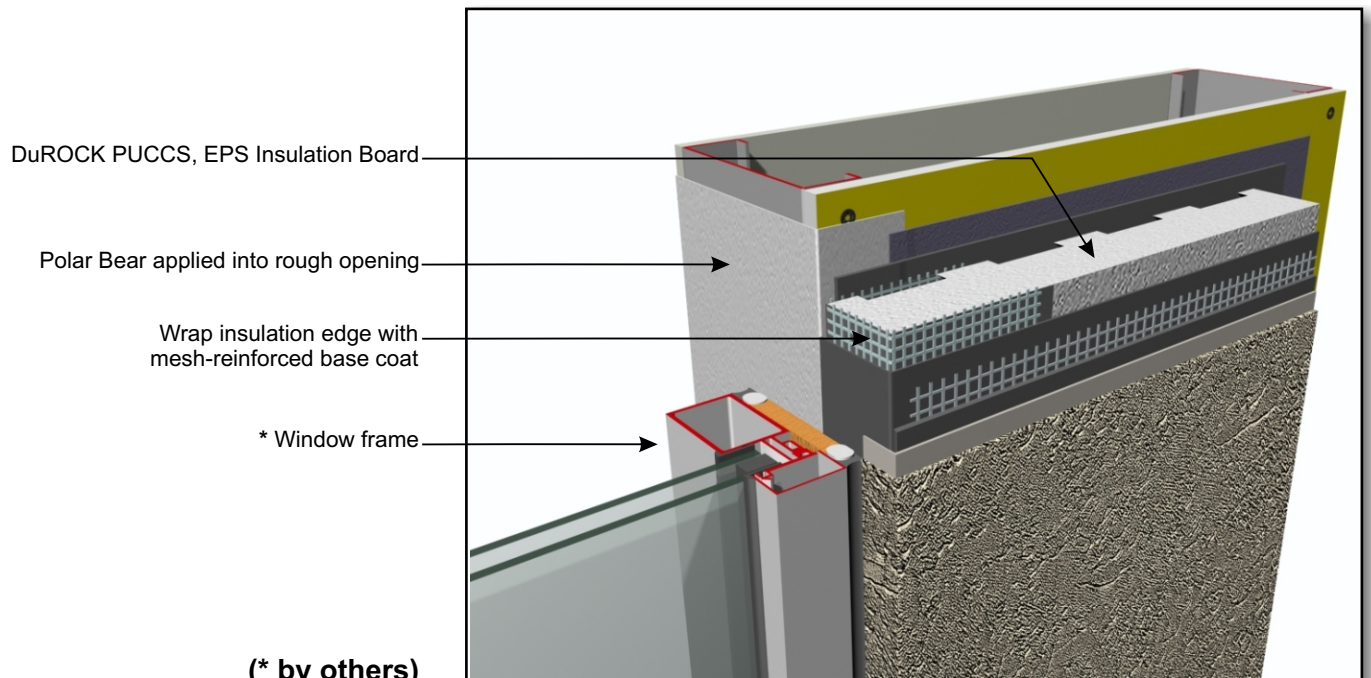
**CHRC D02, WINDOW HEADER WITH METAL FLASHING**

# DuROCK PUCCS EIFS

## Exterior Insulation Finish System for Commercial and High Rise Construction



**CHRC D03, WINDOW SILL**

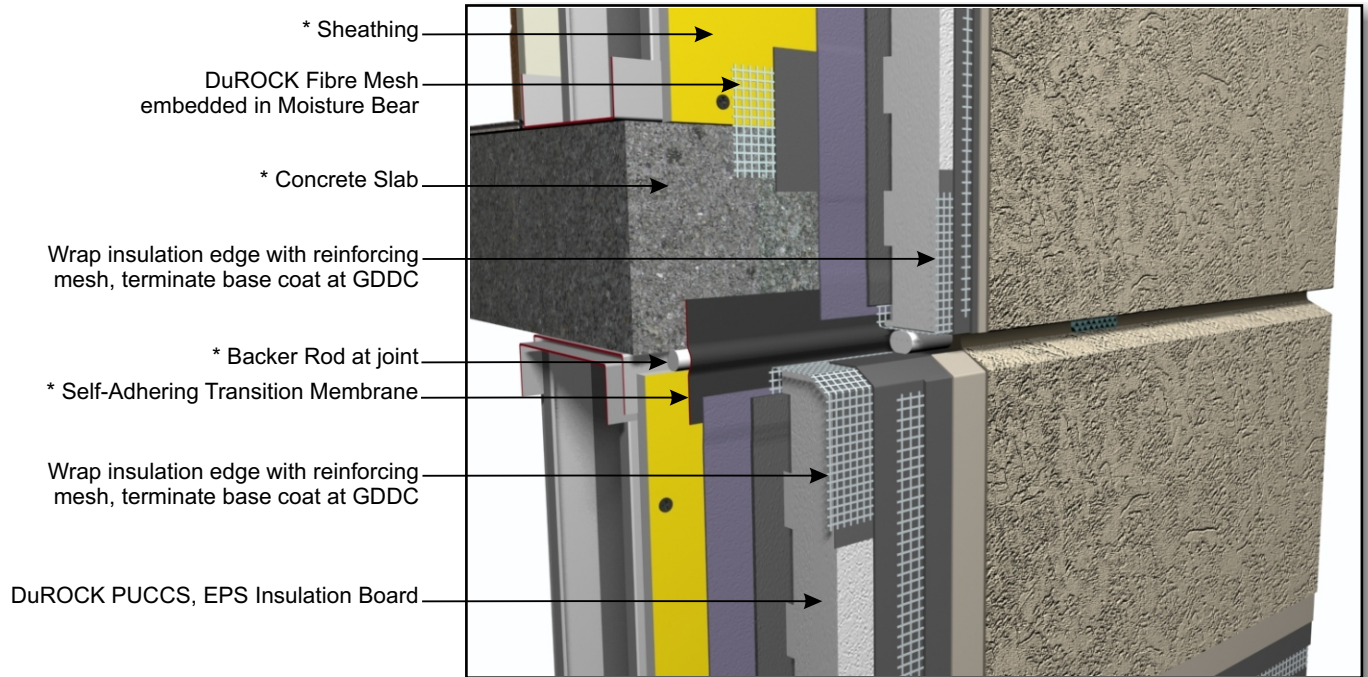


**CHRC D04, WINDOW JAMB**

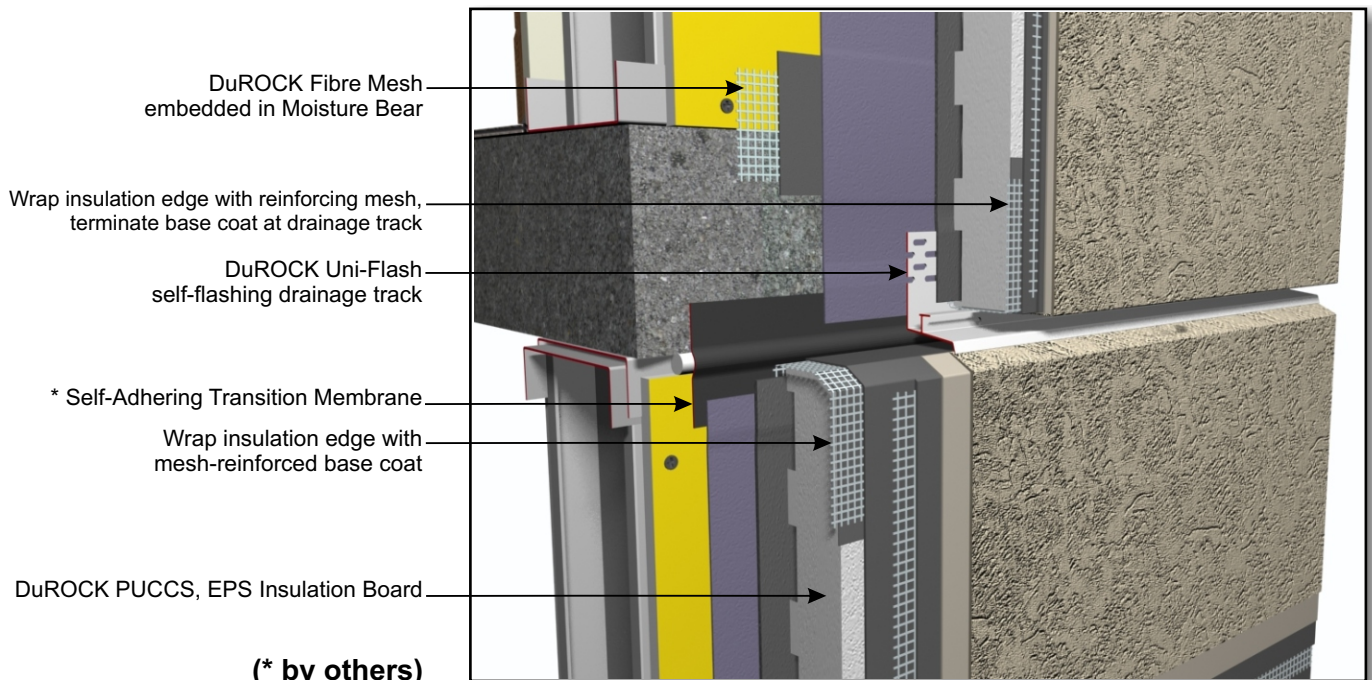


# DuROCK PUCCS EIFS

## Exterior Insulation Finish System for Commercial and High Rise Construction



**CHREC D05, SEALED HORIZONTAL EXPANSION JOINT**

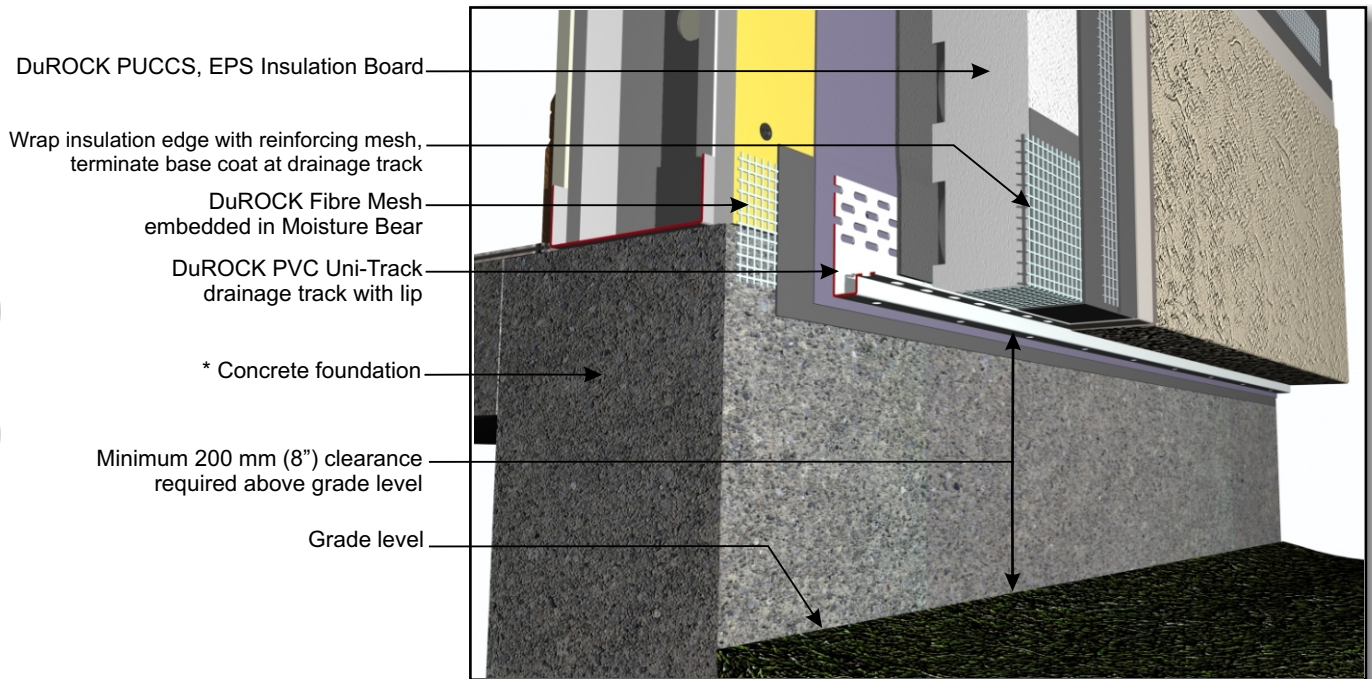


**CHRC D06, DRAINED HORIZONTAL EXPANSION JOINT**

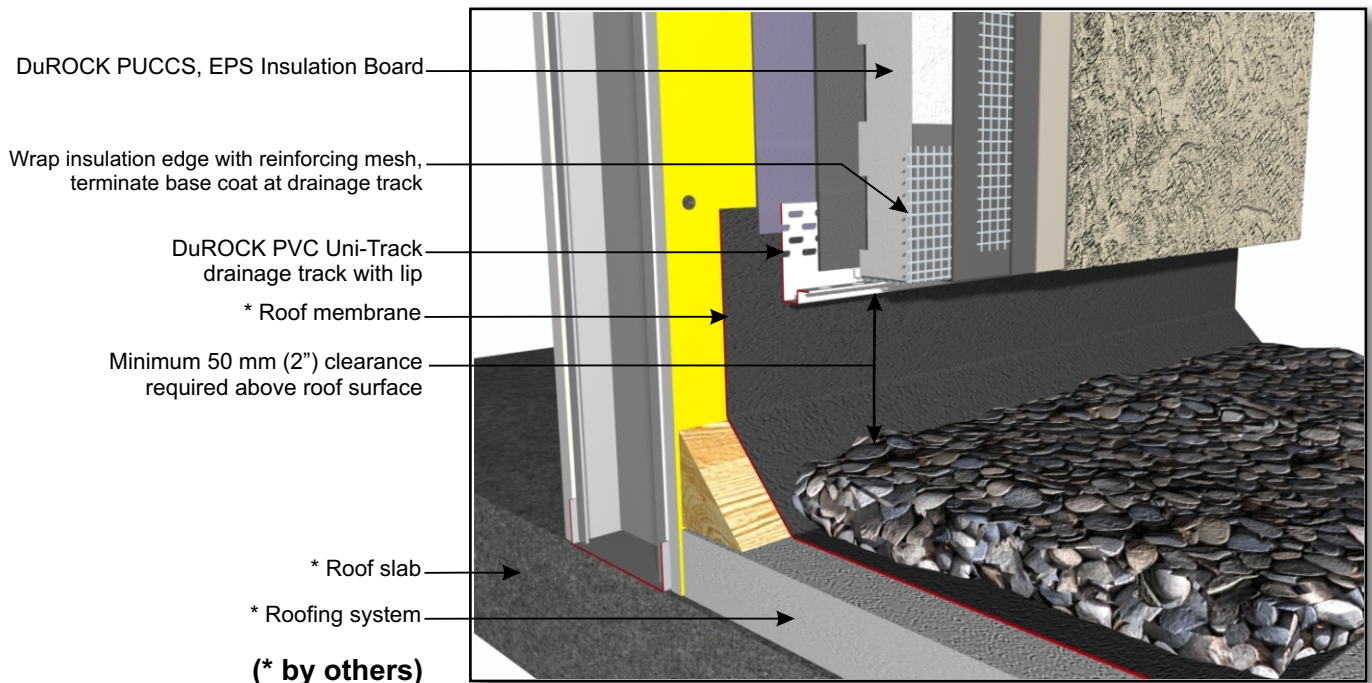


# DuROCK PUCCS EIFS

## Exterior Insulation Finish System for Commercial and High Rise Construction



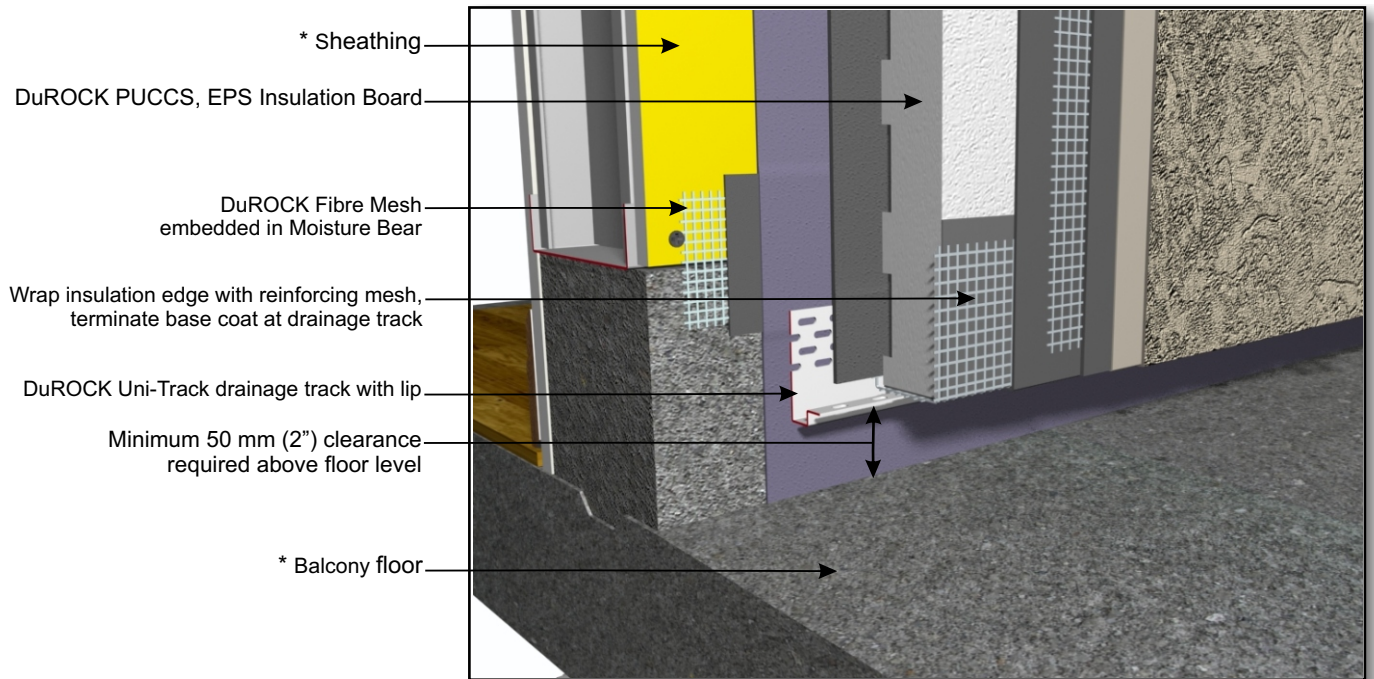
**CHRC D07, EIFS TERMINATION AT GRADE**



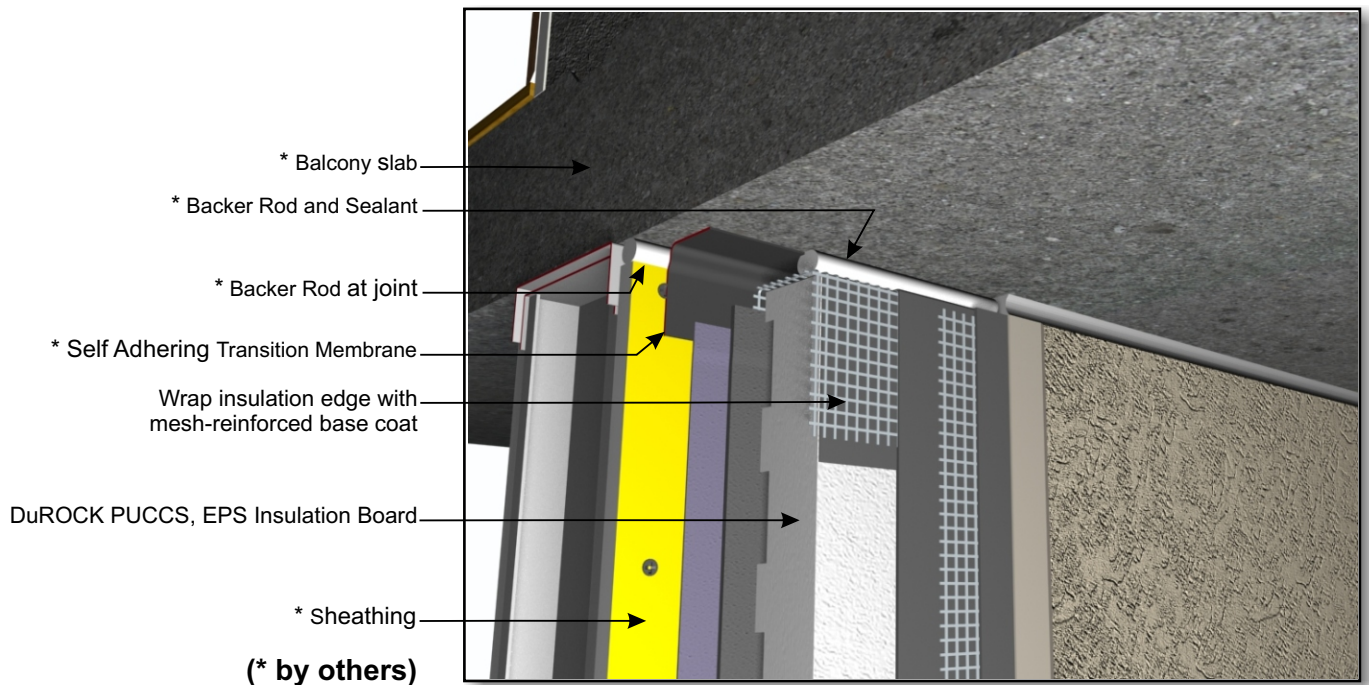
**CHRC D08, EIFS TERMINATION AT FLAT ROOF**

# DuROCK PUCCS EIFS

## Exterior Insulation Finish System for Commercial and High Rise Construction



**CHRC D09, TERMINATION AT BALCONY (ABOVE SLAB)**

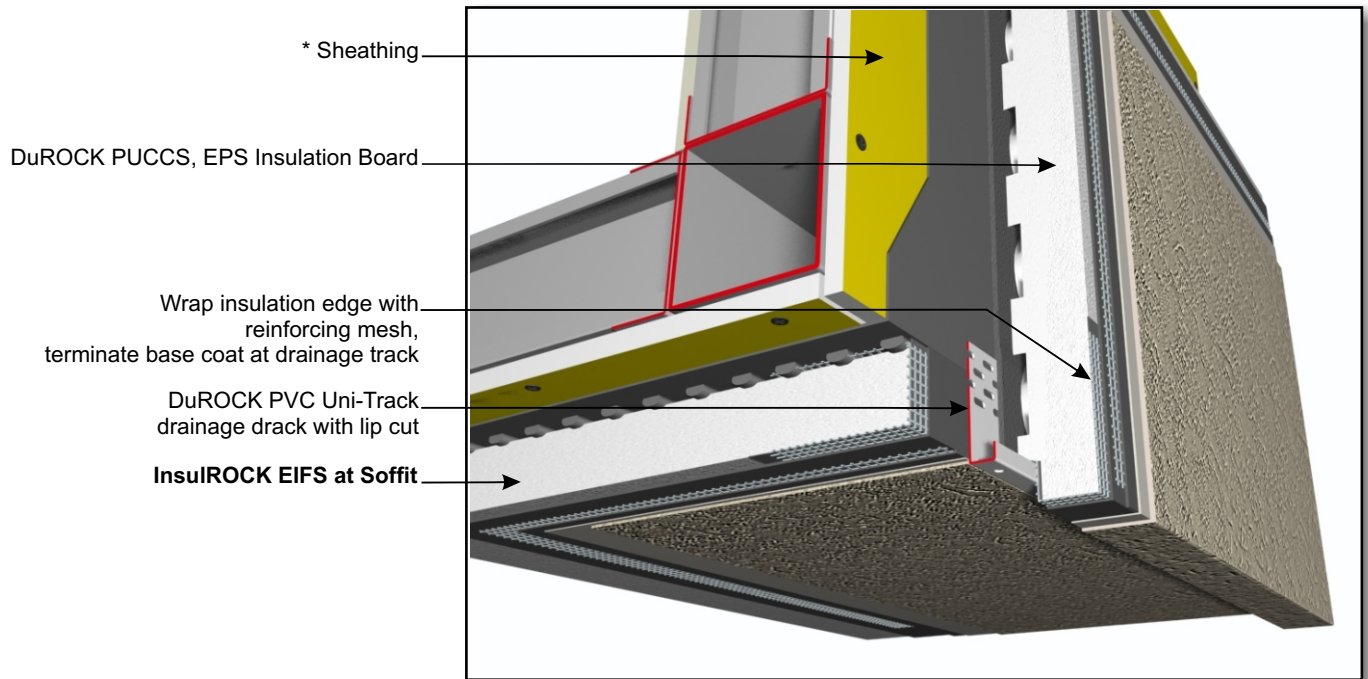


**CHRC D09-A, TERMINATION AT BALCONY (BELOW SLAB)**

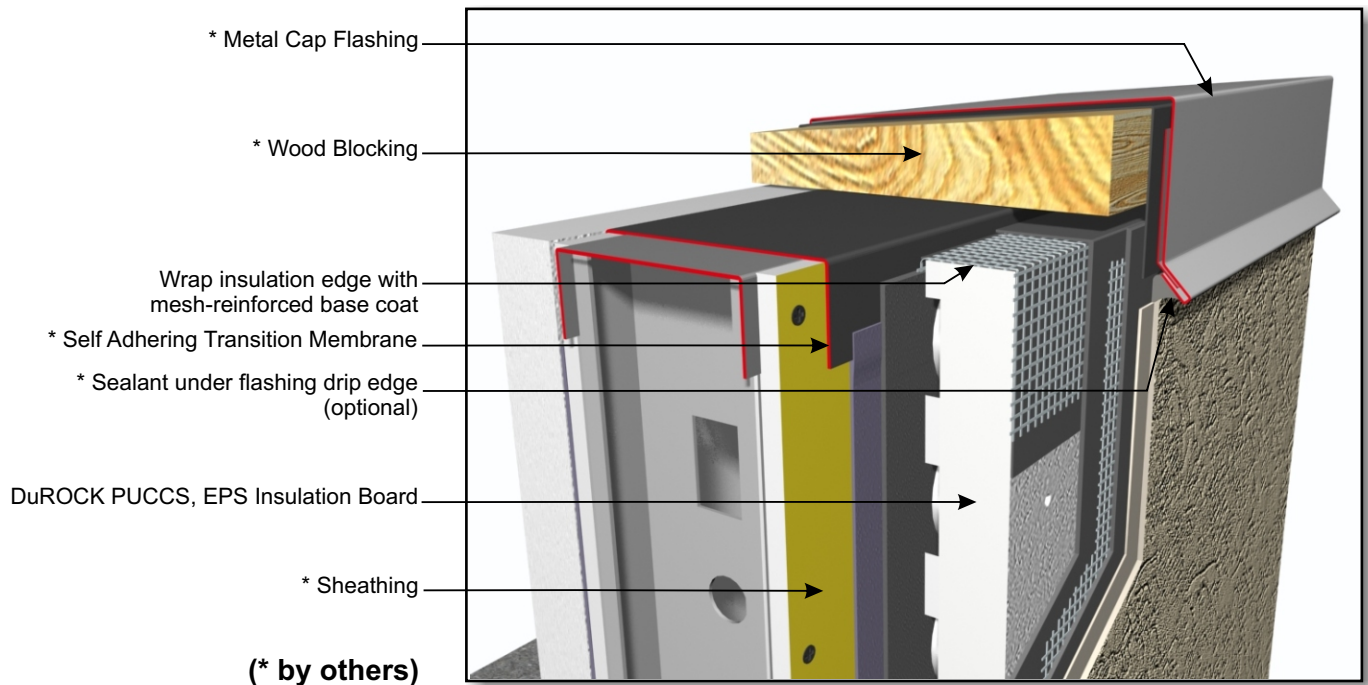


# DuROCK PUCCS EIFS

## Exterior Insulation Finish System for Commercial and High Rise Construction



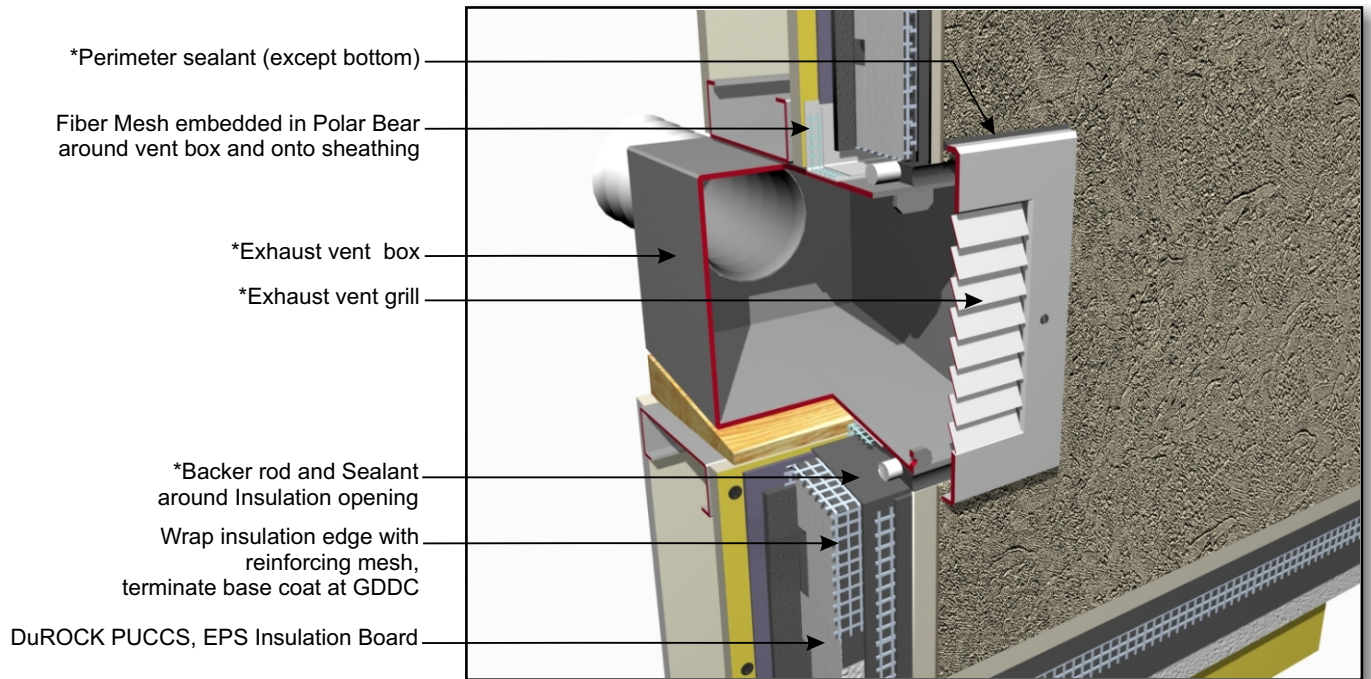
**CHRC D10, TERMINATION AT EIFS SOFFIT**



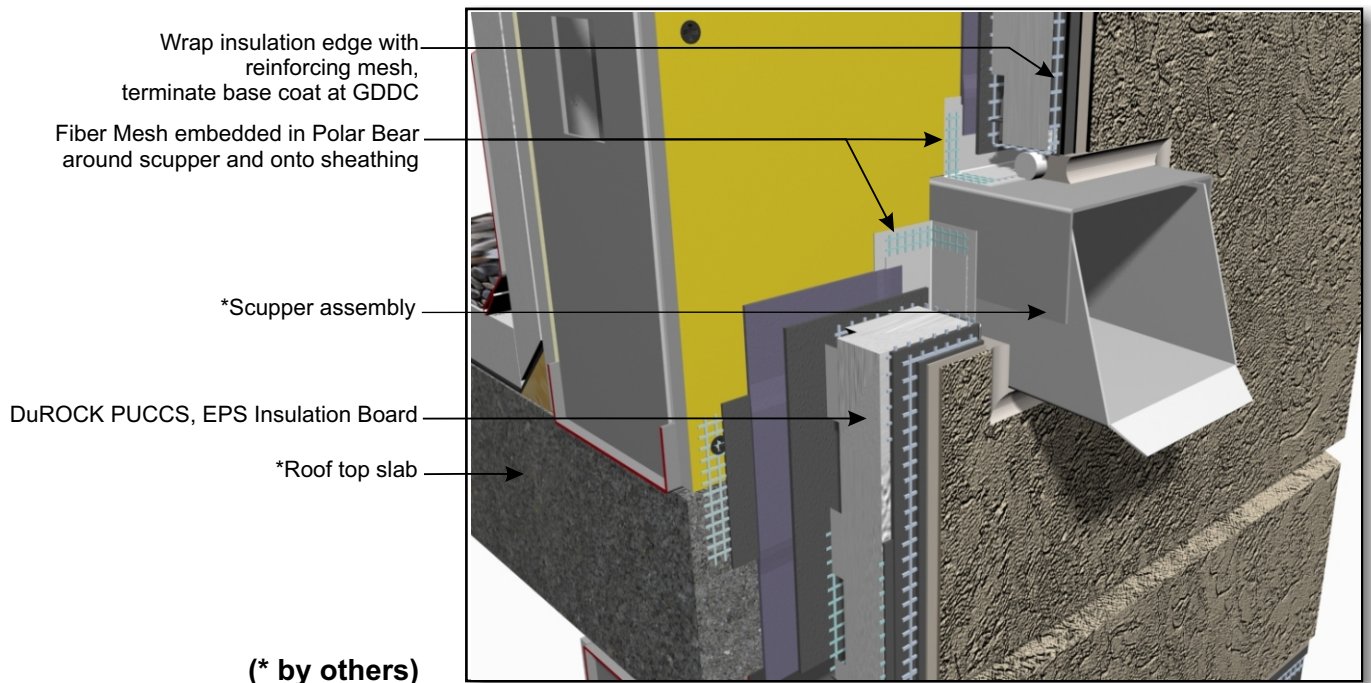
**CHRC D11, ROOF TOP PARAPET**

# DuROCK PUCCS EIFS

## Exterior Insulation Finish System for Commercial and High Rise Construction



**CHRC D12, WALL EXHAUST PENETRATION**

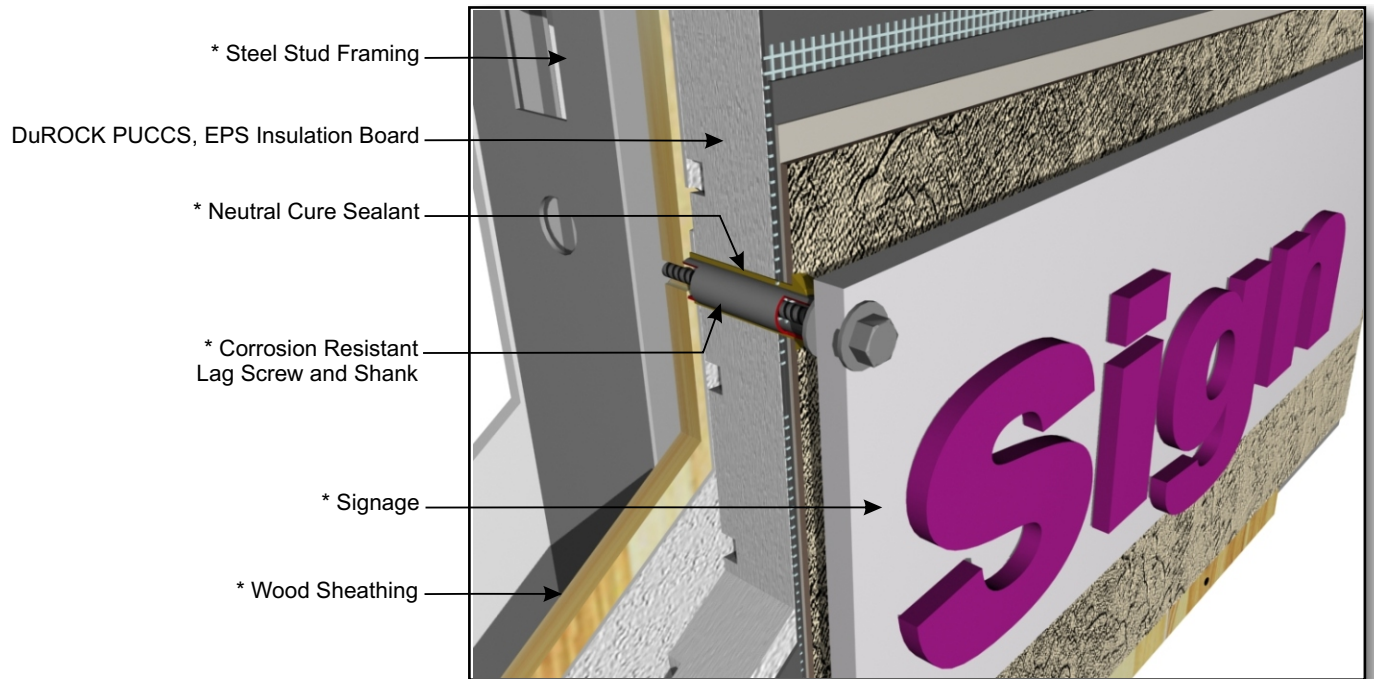


**CHRC D13, SCUPPER PENETRATION**

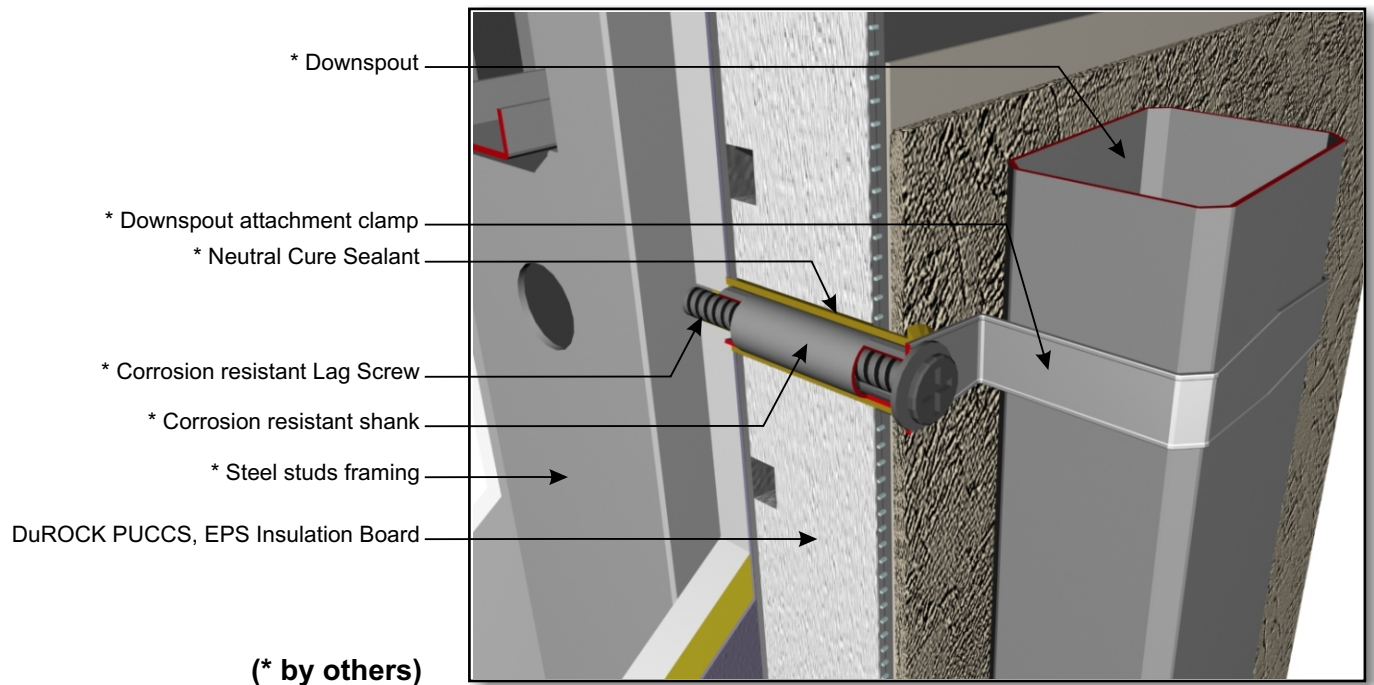


# DuROCK PUCCS EIFS

## Exterior Insulation Finish System for Commercial and High Rise Construction



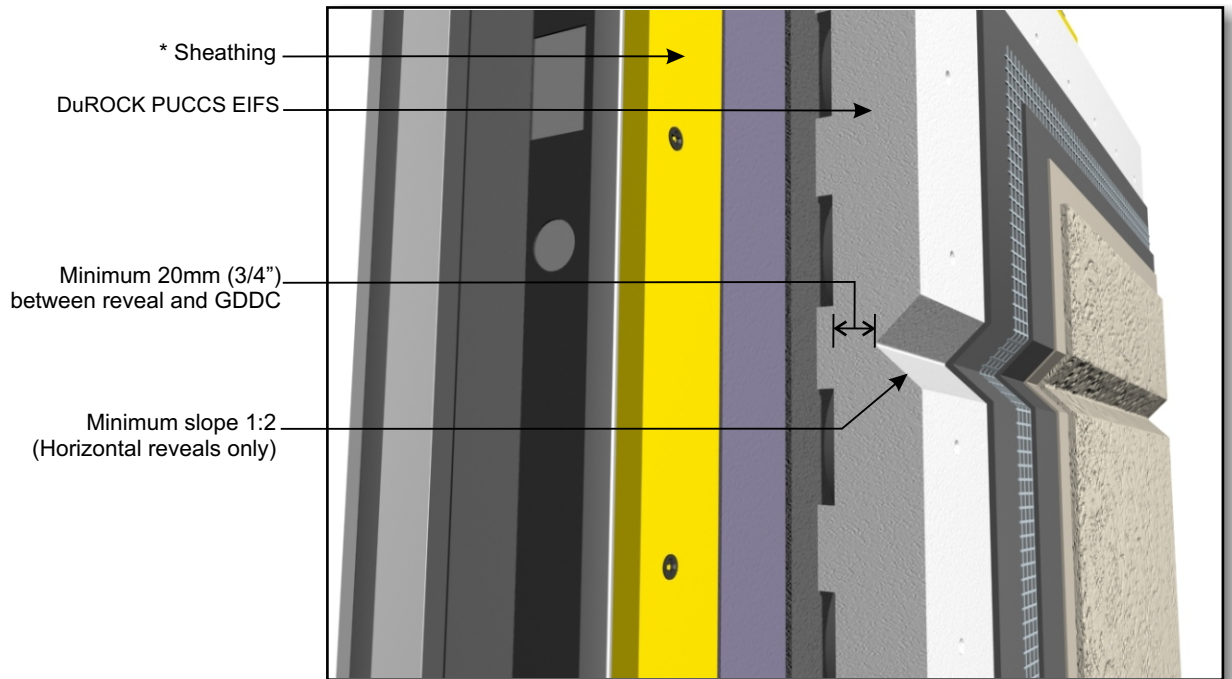
**CHRC D14, SIGNAGE ATTACHMENT**



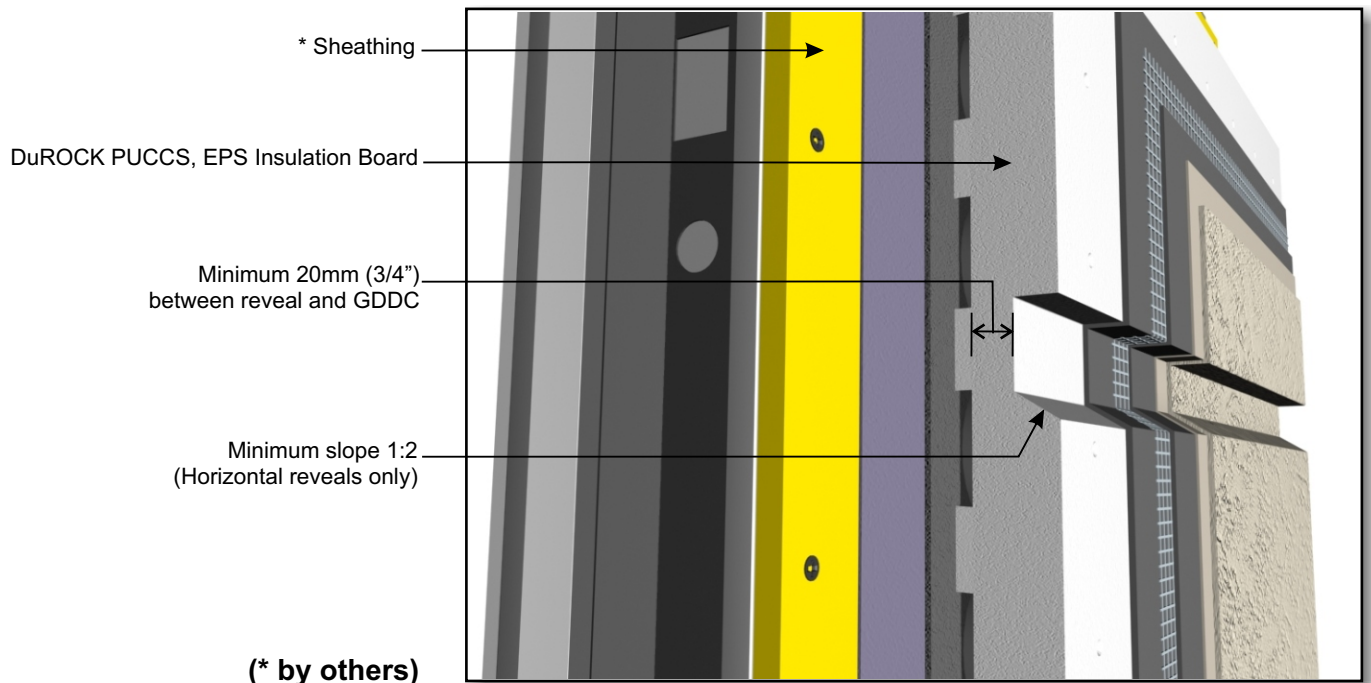
**CHRC D14-A, DOWN SPOUT ATTACHMENT**

# DuROCK PUCCS EIFS

## Exterior Insulation Finish System for Commercial and High Rise Construction



**CHRC D15, AESTHETIC REVEAL (TYPE A)**



**CHRC D15-A, AESTHETIC REVEAL (TYPE B)**

ARCHITECTURAL FINISHING SYSTEMS