

* Wood Sheathing

DuROCK Roller Bear or Polar Bear
Moisture Barrier

DuROCK Polar Bear Moisture Barrier/Adhesive

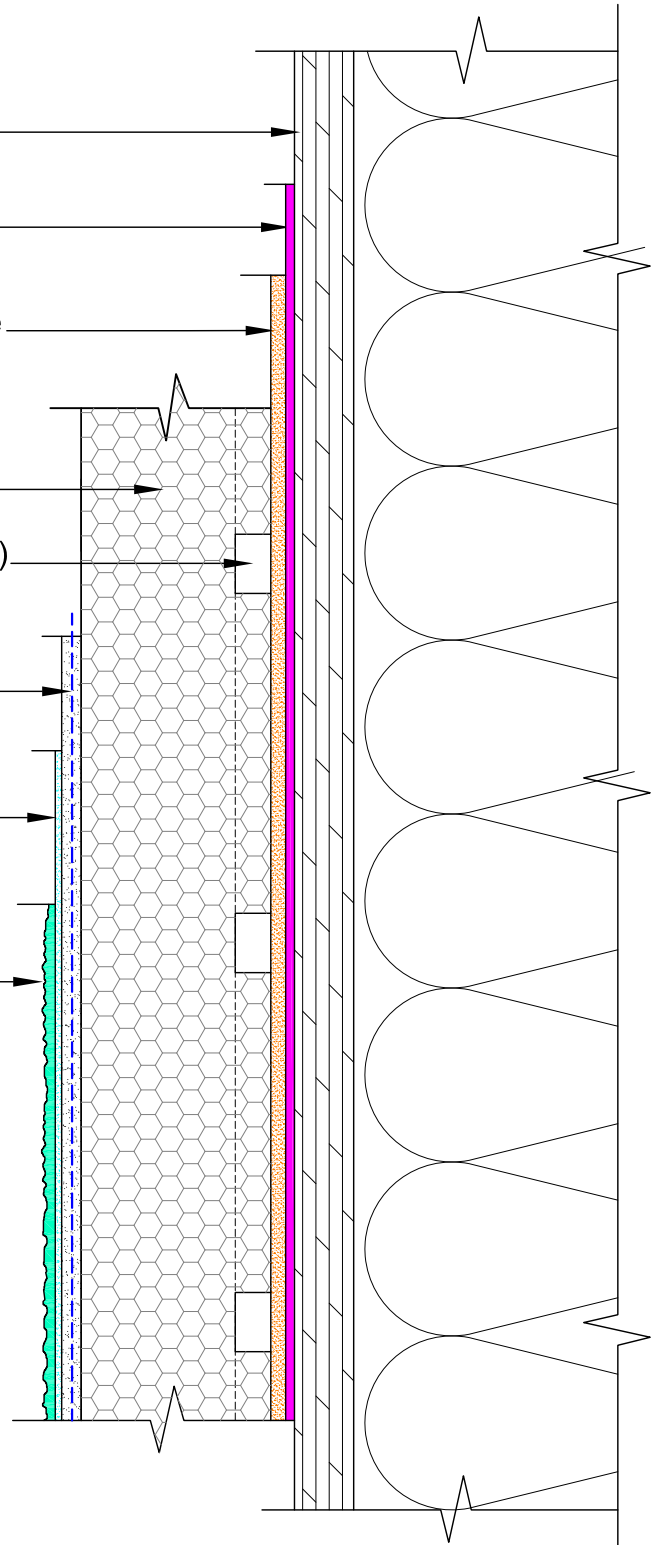
DuROCK PUCCS, EPS Insulation Board

Geometrically Defined Drainage Cavity (GDDC)
at the back of insulation board

DuROCK 5oz. Reinforcing Fibre Mesh
embedded in Prep Coat

DuROCK Base Primer (optional)

DuROCK Finish Coat



(* by others)

DuROCK SYSTEM:

PUCCS-LLRC

(FOR LOW-RISE RESIDENTIAL CONSTRUCTION)

DRAWING TITLE:

STANDARD SECTION DETAIL

This detail complements the corresponding system specification and illustrates the system configuration for the depicted construction. Visit www.durock.com for the latest revisions and contact DuROCK for project-specific details to suit conditions other than those depicted. DuROCK assumes no liability for the architecture, design, engineering, or workmanship of any project.

DuROCK

Alfacing International Limited

101-B ROYTEC ROAD
WOODBIDGE, ONTARIO
TEL : (905) 856-0133, FAX : (905) 856-9654
www.durock.com

ARCHITECTURAL FINISHING SYSTEMS

LAST REVISION: JAN 2019

ISSUED: MAR 2007

DRAWN: RIZ

SCALE: NTS

**PUCCS-LLRC
COVER**

* Wood Sheathing

DuROCK Roller Bear or Polar Bear Moisture Barrier

DuROCK Polar Bear Moisture Barrier/Adhesive

DuROCK PUCCS, EPS Insulation Board
with 10mm (GDDC) Geometrically Defined
Drainage Cavity

DuROCK Reinforcing Mesh
embedded in DuROCK Prep Coat

DuROCK Finish Coat

Min slope 1:2

* Decorative moulding

Wrap insulation edge with
reinforcing mesh, terminate
base coat at drainage track

* Optional Backer Rod and Sealant (vented)

DuROCK Uni-Flash
self-flashing drainage track

* Window

DuROCK Polar Bear
applied continuously inside
the opening extending a
minimum of 50mm (2")
onto the sheathing

(* by others)

DuROCK SYSTEM:

PUCCS-LLRC

(FOR LOW-RISE RESIDENTIAL CONSTRUCTION)

DRAWING TITLE:

**WINDOW HEADER WITH
DuROCK PVC UNI-FLASH**

This detail complements the corresponding system specification and illustrates the system configuration for the depicted construction. Visit www.durock.com for the latest revisions and contact DuROCK for project-specific details to suit conditions other than those depicted. DuROCK assumes no liability for the architecture, design, engineering, or workmanship of any project.

DuROCK
Alfacing International Limited
101-B ROYTEC ROAD
WOODBIDGE, ONTARIO
TEL : (905) 856-0133, FAX : (905) 856-9654
www.durock.com
ARCHITECTURAL FINISHING SYSTEMS

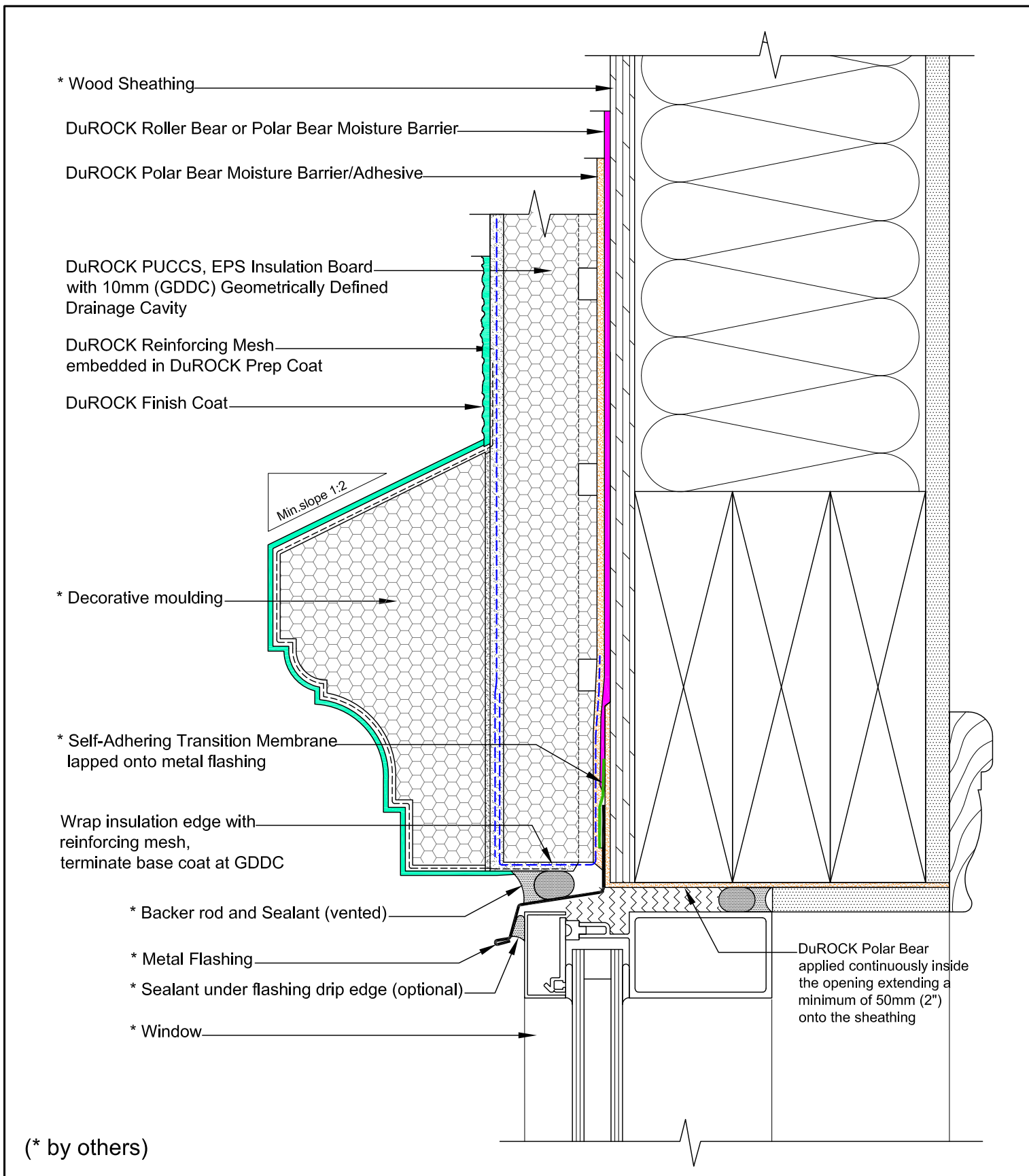
LAST REVISE: MAR 2020

ISSUED: MAR 2007

DRAWN: RIZ

SCALE: NTS

**PUCCS-LLRC
D-01**



DuROCK SYSTEM:

PUCCS-LLRC

(FOR LOW-RISE RESIDENTIAL CONSTRUCTION)

DRAWING TITLE:

WINDOW HEADER WITH METAL FLASHING

This detail complements the corresponding system specification and illustrates the system configuration for the depicted construction. Visit www.durock.com for the latest revisions and contact DuROCK for project-specific details to suit conditions other than those depicted. DuROCK assumes no liability for the architecture, design, engineering, or workmanship of any project.

DuROCK

Alfacing International Limited

101-B ROYTEC ROAD
WOODBRIDGE, ONTARIO
TEL : (905) 856-0133, FAX : (905) 856-9654
www.durock.com

ARCHITECTURAL FINISHING SYSTEMS

LAST REVISE: JAN 2019

ISSUED: MAR 2007

DRAWN: RIZ

SCALE: NTS

PUCCS-LLRC
D-02

* Window

DuROCK Polar Bear applied continuously inside the opening extending a minimum of 50mm (2") onto the sheathing

* Backer Rod and Sealant (vented)

Wrap insulation edge with mesh-reinforced base coat

Seal drainage cavity with base coat or adhesive

* Decorative moulding

DuROCK Finish Coat

DuROCK Reinforcing Mesh embedded in DuROCK Prep Coat

DuROCK PUCCS, EPS Insulation Board with 10mm (GDDC) Geometrically Defined Drainage Cavity

DuROCK Polar Bear Moisture Barrier/Adhesive

DuROCK Roller Bear or Polar Bear Air/Moisture Barrier

* Wood Sheathing

Min. slope 1:2

(* by others)

DuROCK SYSTEM:

PUCCS-LLRC

(FOR LOW-RISE RESIDENTIAL CONSTRUCTION)

DRAWING TITLE:

WINDOW SILL WITHOUT FLASHING

This detail complements the corresponding system specification and illustrates the system configuration for the depicted construction. Visit www.durock.com for the latest revisions and contact DuROCK for project-specific details to suit conditions other than those depicted. DuROCK assumes no liability for the architecture, design, engineering, or workmanship of any project.

DuROCK

Alfacing International Limited

101-B ROYTEC ROAD
WOODBRIDGE, ONTARIO
TEL : (905) 856-0133, FAX : (905) 856-9654
www.durock.com

ARCHITECTURAL FINISHING SYSTEMS

LAST REVISE: MAR 2020

ISSUED: MAR 2007

DRAWN: RIZ

SCALE: NTS

PUCCS-LLRC

D-03

* Window

DuROCK Polar Bear applied continuously inside the opening extending a minimum of 50mm (2") onto the sheathing

* Backer Rod and Sealant (vented)

* Metal Flashing

Wrap insulation edge with mesh-reinforced base coat

Seal drainage cavity with base coat or adhesive

* Decorative moulding

DuROCK Finish Coat

DuROCK Reinforcing Mesh embedded in DuROCK Prep Coat

DuROCK PUCCS, EPS Insulation Board with 10mm (GDDC) Geometrically Defined Drainage Cavity

DuROCK Polar Bear Moisture Barrier/Adhesive

DuROCK Roller Bear or Polar Bear Air/Moisture Barrier

* Wood Sheathing

Min slope 1:2

(* by others)

DuROCK SYSTEM:

PUCCS-LLRC

(FOR LOW-RISE RESIDENTIAL CONSTRUCTION)

DRAWING TITLE:

WINDOW SILL WITH FLASHING

This detail complements the corresponding system specification and illustrates the system configuration for the depicted construction. Visit www.durock.com for the latest revisions and contact DuROCK for project-specific details to suit conditions other than those depicted. DuROCK assumes no liability for the architecture, design, engineering, or workmanship of any project.

DuROCK

Alfacing International Limited

101-B ROYTEC ROAD
WOODBRIDGE, ONTARIO
TEL : (905) 856-0133, FAX : (905) 856-9654
www.durock.com

ARCHITECTURAL FINISHING SYSTEMS

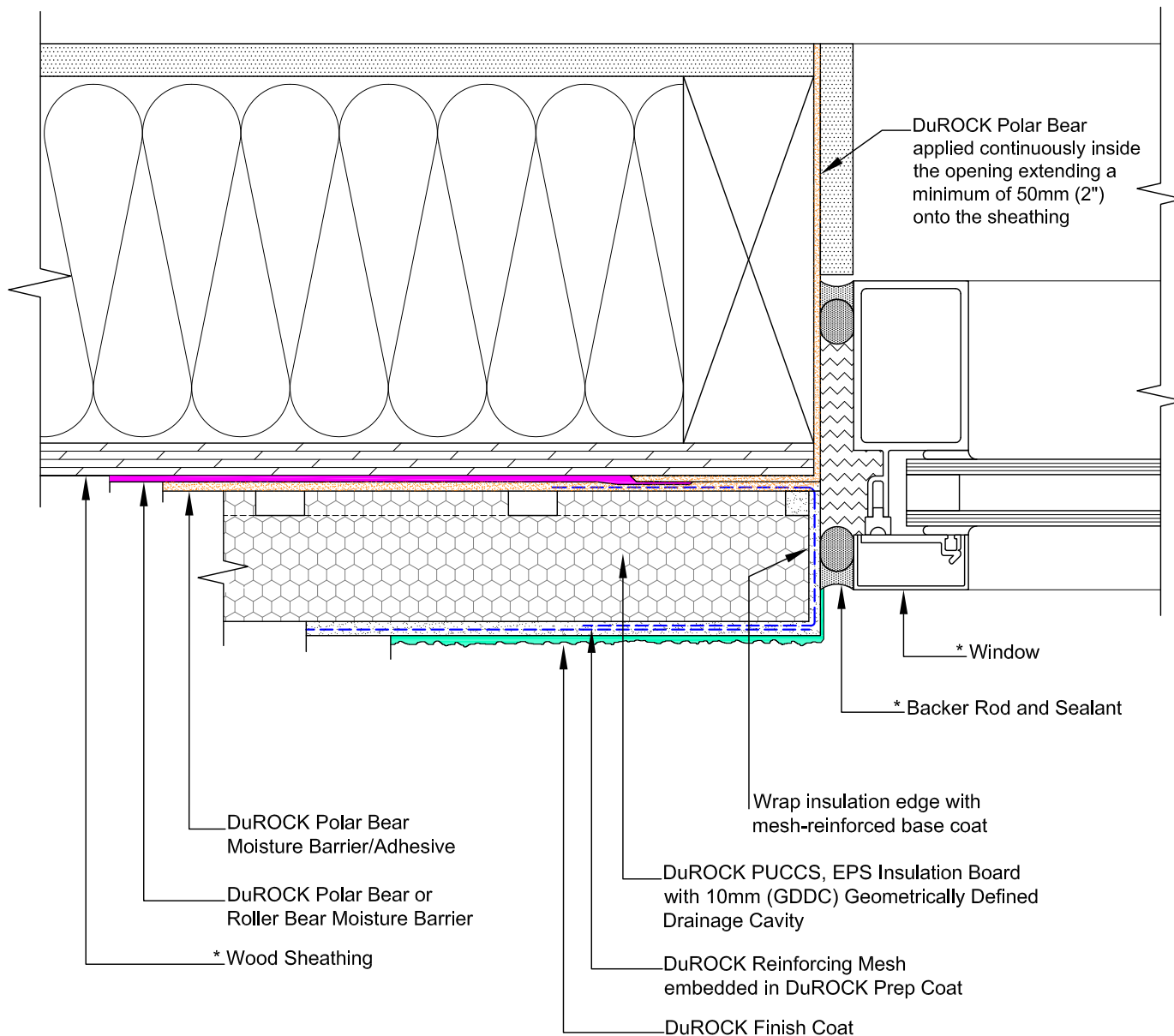
LAST REVISE: MAR 2020

ISSUED: MAR 2007

DRAWN: RIZ

SCALE: NTS

PUCCS-LLRC
D-04



(* by others)

DuROCK SYSTEM:

Puccs-LLRC

(FOR LOW-RISE RESIDENTIAL CONSTRUCTION)

DRAWING TITLE:

WINDOW JAMB

This detail complements the corresponding system specification and illustrates the system configuration for the depicted construction. Visit www.durock.com for the latest revisions and contact DuROCK for project-specific details to suit conditions other than those depicted. DuROCK assumes no liability for the architecture, design, engineering, or workmanship of any project.

DuROCK

Alfacing International Limited

101-B ROYTEC ROAD
WOODBRIDGE, ONTARIO
TEL : (905) 856-0133, FAX : (905) 856-9654
www.durock.com

ARCHITECTURAL FINISHING SYSTEMS

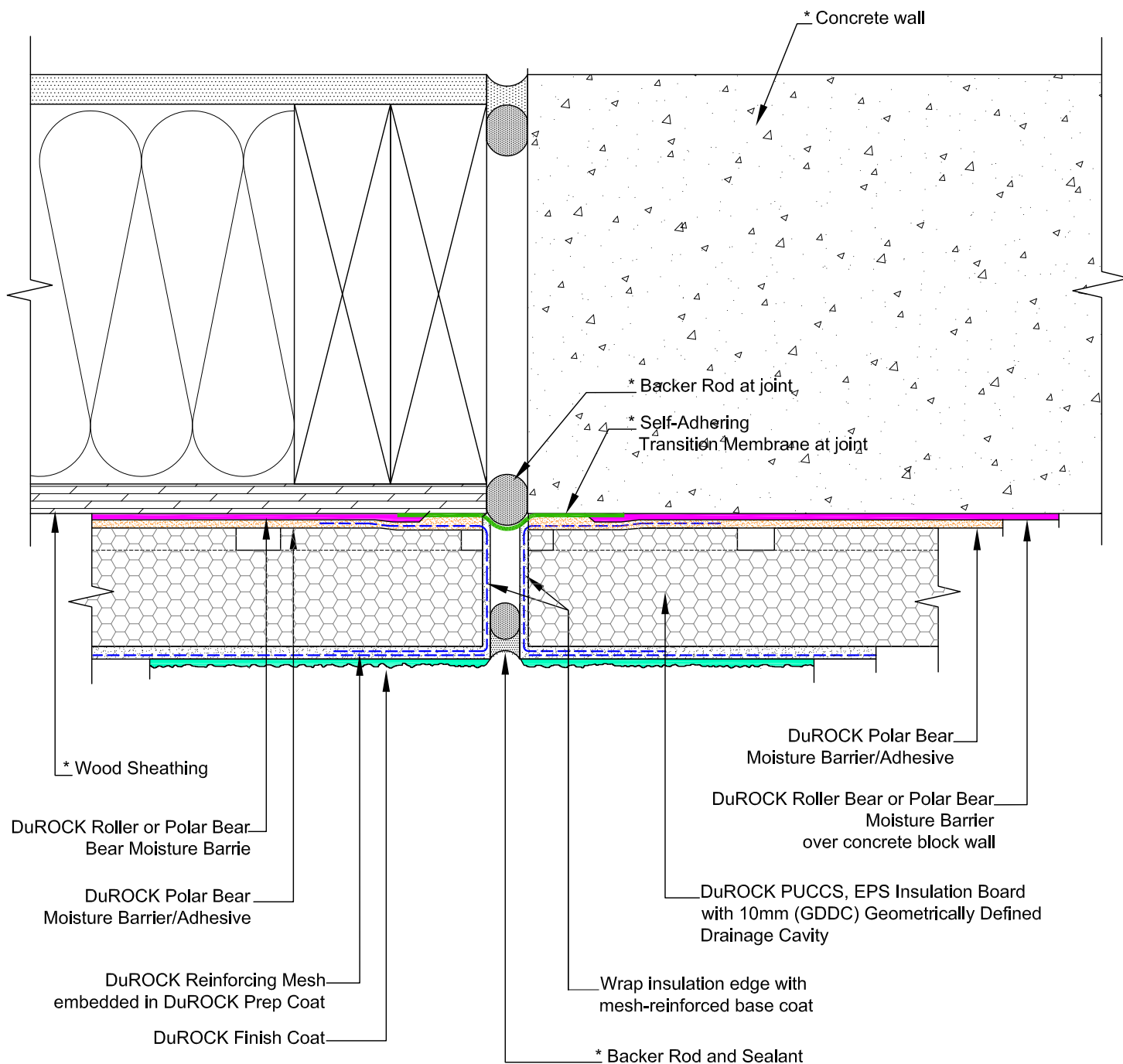
LAST REVISE: MAR 2020

ISSUED: MAR 2007

DRAWN: RIZ

SCALE: NTS

Puccs-LLRC
D-05



(* by others)

DuROCK SYSTEM:

Puccs-LLRC

(FOR LOW-RISE RESIDENTIAL CONSTRUCTION)

DRAWING TITLE:

VERTICAL EXPANSION JOINT, JUNCTION WITH CONCRETE WALL (PLAN DETAIL)

This detail complements the corresponding system specification and illustrates the system configuration for the depicted construction. Visit www.durock.com for the latest revisions and contact DuROCK for project-specific details to suit conditions other than those depicted. DuROCK assumes no liability for the architecture, design, engineering, or workmanship of any project.

DuROCK

Alfacing International Limited

101-B ROYTEC ROAD
WOODBRIDGE, ONTARIO
TEL : (905) 856-0133, FAX : (905) 856-9654
www.durock.com

ARCHITECTURAL FINISHING SYSTEMS

LAST REVISION: JAN 2019

ISSUED: MAR 2007

DRAWN: RIZ

SCALE: NTS

Puccs-LLRC
D-06

* Wood Sheathing

DuROCK Roller Bear or Polar Bear Moisture Barrier

DuROCK Polar Bear Moisture Barrier/Adhesive

DuROCK PUCCS, EPS Insulation Board
with 10mm (GDDC) Geometrically Defined
Drainage Cavity

DuROCK Reinforcing Mesh
embedded in DuROCK Prep Coat

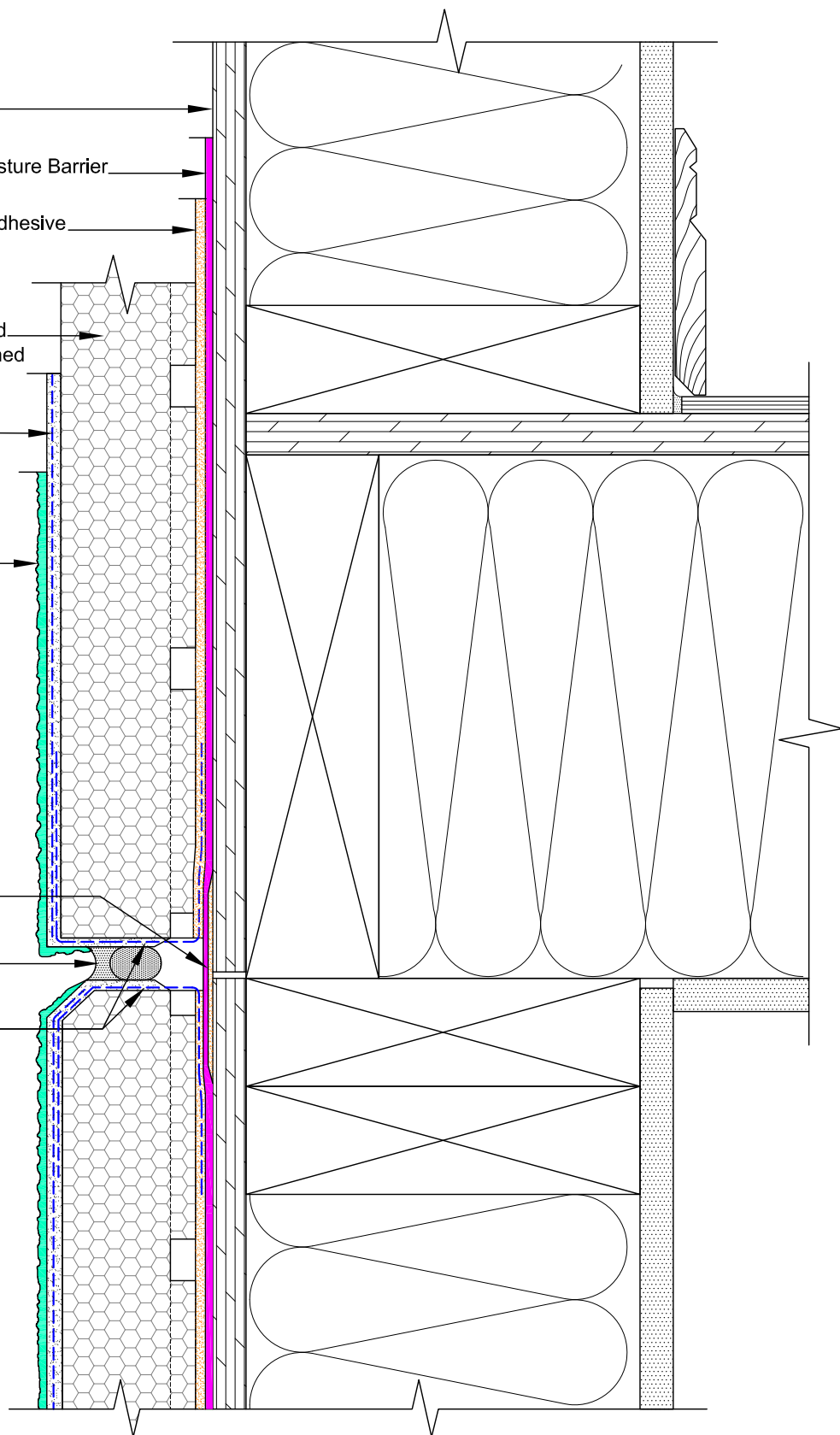
DuROCK Finish Coat

DuROCK Polar Bear joint treatment

* Backer Rod and Sealant (vented)

Wrap insulation edge with
reinforcing mesh,
terminate base coat at GDDC

(* by others)



DuROCK SYSTEM:

PUCCS-LLRC

(FOR LOW-RISE RESIDENTIAL CONSTRUCTION)

DRAWING TITLE:

**HORIZONTAL EXPANSION JOINT
(SEALED OPTION)**

This detail complements the corresponding system specification and illustrates the system configuration for the depicted construction. Visit www.durock.com for the latest revisions and contact DuROCK for project-specific details to suit conditions other than those depicted. DuROCK assumes no liability for the architecture, design, engineering, or workmanship of any project.

DuROCK

Alfacing International Limited

101-B ROYTEC ROAD
WOODBIDGE, ONTARIO
TEL : (905) 856-0133, FAX : (905) 856-9654
www.durock.com

ARCHITECTURAL FINISHING SYSTEMS

LAST REVISE: JAN 2019

ISSUED: MAR 2007

DRAWN: RIZ

SCALE: NTS

PUCCS-LLRC
D-07

* Wood Sheathing

DuROCK Roller Bear or Polar Bear Moisture Barrier

DuROCK Polar Bear Moisture Barrier/Adhesive

DuROCK PUCCS, EPS Insulation Board
with 10mm (GDDC) Geometrically Defined
Drainage Cavity

DuROCK Reinforcing Mesh
embedded in DuROCK Prep Coat

DuROCK Finish Coat

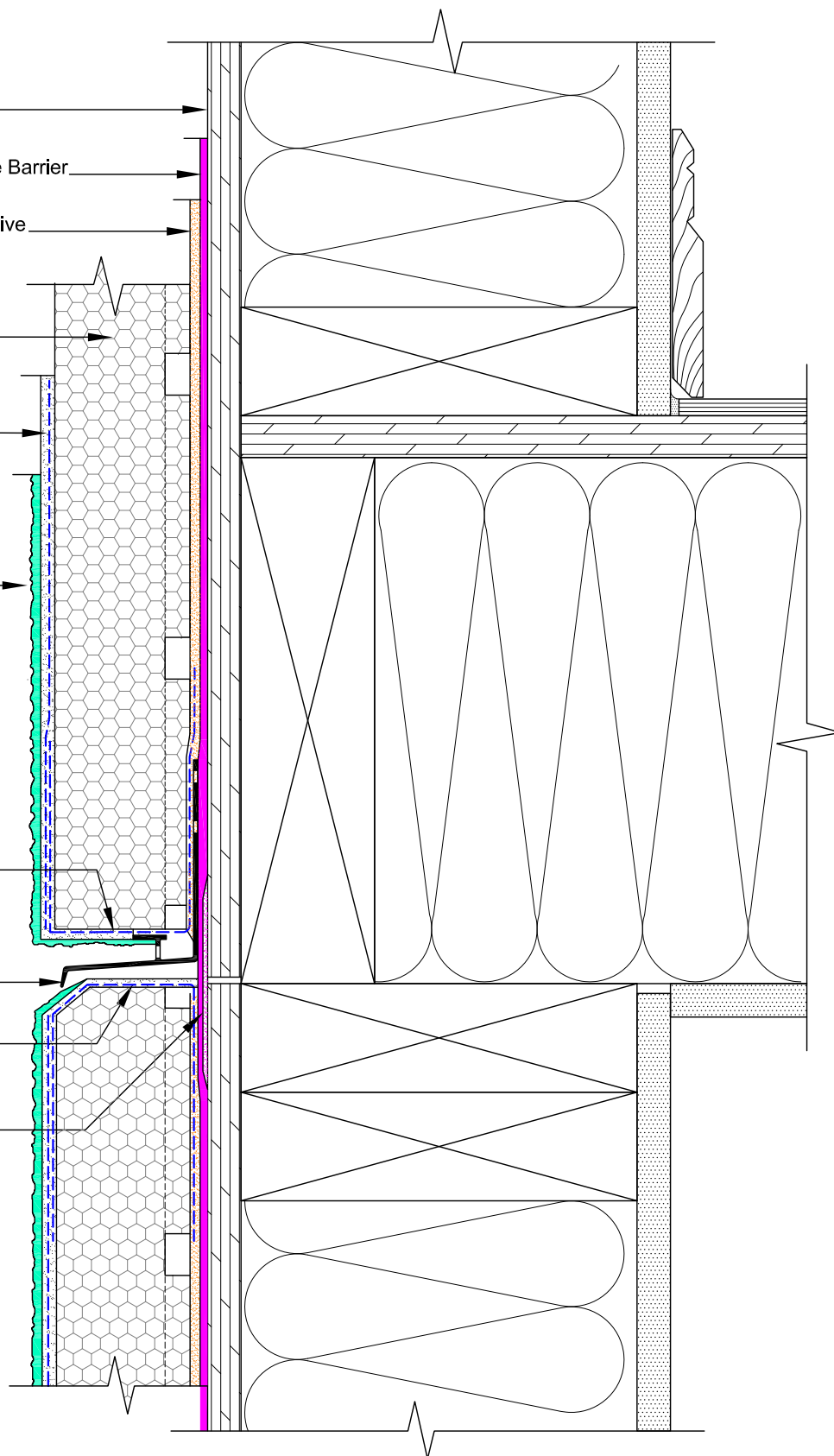
Wrap insulation edge with
reinforcing mesh,
terminate base coat at drainage track

DuROCK Uni-Flash,
self-flashing drainage track

Wrap insulation edge with
mesh-reinforced base coat

DuROCK Polar Bear joint treatment

(* by others)



DuROCK SYSTEM:

PUCCS-LLRC

(FOR LOW-RISE RESIDENTIAL CONSTRUCTION)

DRAWING TITLE:

**HORIZONTAL EXPANSION JOINT
(DRAINED OPTION)**

This detail complements the corresponding system specification and illustrates the system configuration for the depicted construction. Visit www.durock.com for the latest revisions and contact DuROCK for project-specific details to suit conditions other than those depicted. DuROCK assumes no liability for the architecture, design, engineering, or workmanship of any project.

DuROCK

Alfacing International Limited

101-B ROYTEC ROAD
WOODBIDGE, ONTARIO
TEL : (905) 856-0133, FAX : (905) 856-9654
www.durock.com

ARCHITECTURAL FINISHING SYSTEMS

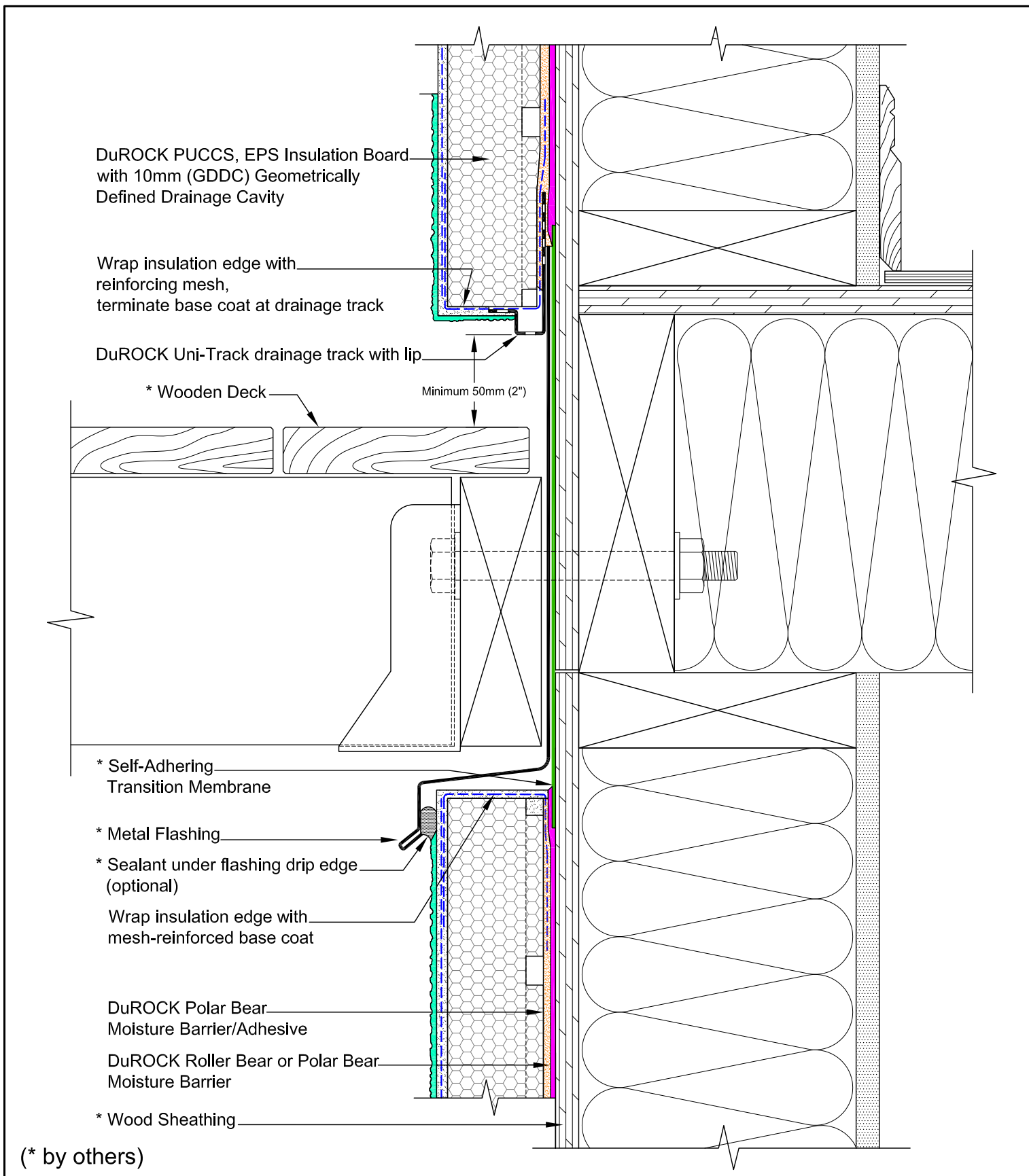
LAST REVISE: JAN 2019

ISSUED: MAR 2007

DRAWN: RIZ

SCALE: NTS

**PUCCS-LLRC
D-08**



DuROCK SYSTEM:

PUCCS-LLRC

(FOR LOW-RISE RESIDENTIAL CONSTRUCTION)

DRAWING TITLE:

TERMINATION AT BALCONY/DECK

This detail complements the corresponding system specification and illustrates the system configuration for the depicted construction. Visit www.durock.com for the latest revisions and contact DuROCK for project-specific details to suit conditions other than those depicted. DuROCK assumes no liability for the architecture, design, engineering, or workmanship of any project.

DuROCK

Alfacing International Limited

101-B ROYTEC ROAD
WOODBRIDGE, ONTARIO
TEL : (905) 856-0133, FAX : (905) 856-9654
www.durock.com

ARCHITECTURAL FINISHING SYSTEMS

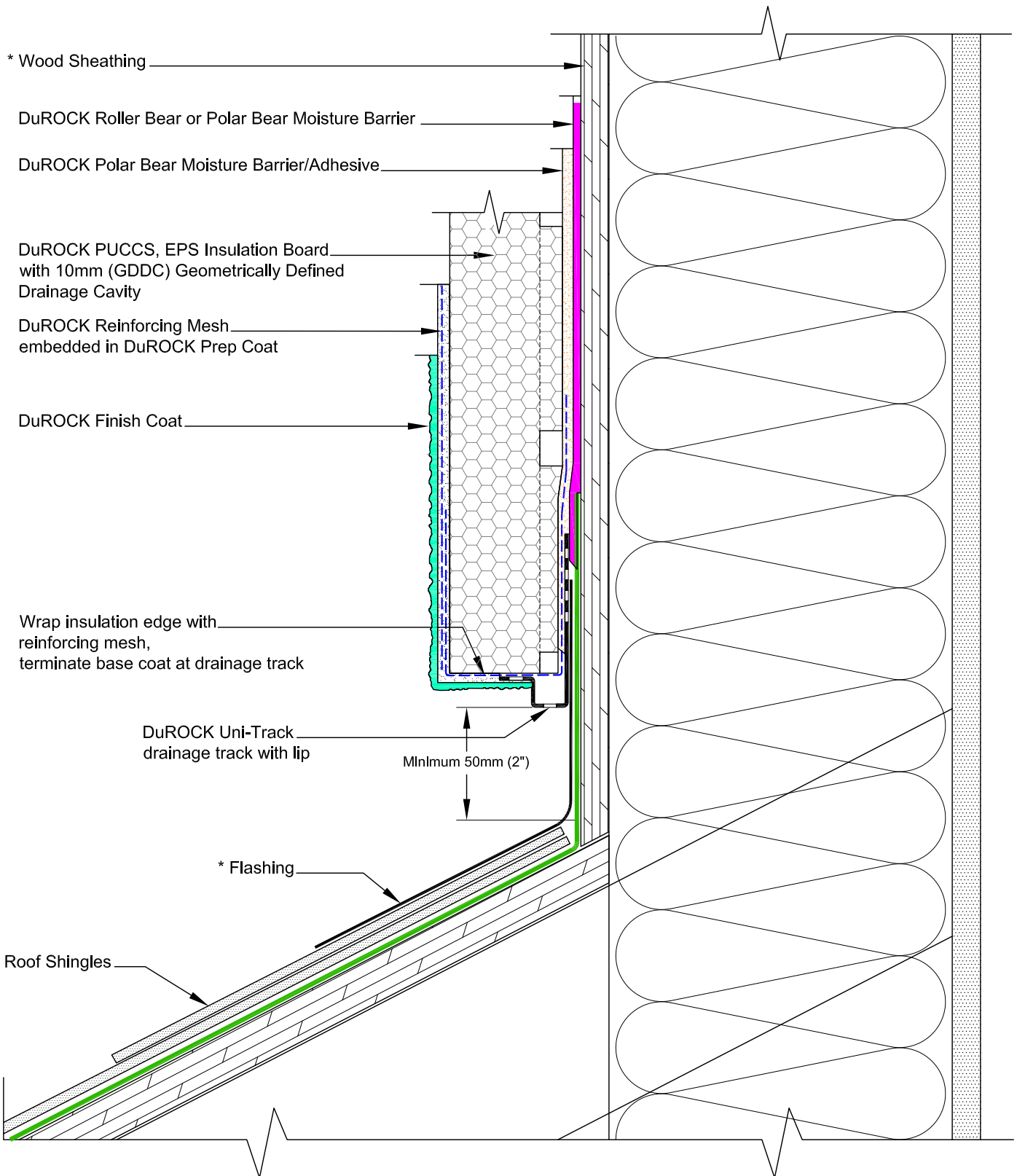
LAST REVISE: JAN 2019

ISSUED: MAR 2007

DRAWN: RIZ

SCALE: NTS

PUCCS-LLRC
D-09



(* by others)

DuROCK SYSTEM:

PUCCS-LLRC

(FOR LOW-RISE RESIDENTIAL CONSTRUCTION)

DRAWING TITLE:

TERMINATION AT SLOPED ROOF

This detail complements the corresponding system specification and illustrates the system configuration for the depicted construction. Visit www.durock.com for the latest revisions and contact DuROCK for project-specific details to suit conditions other than those depicted. DuROCK assumes no liability for the architecture, design, engineering, or workmanship of any project.

DuROCK

Alfacing International Limited

101-B ROYTEC ROAD
WOODBRIDGE, ONTARIO
TEL : (905) 856-0133, FAX : (905) 856-9654
www.durock.com

ARCHITECTURAL FINISHING SYSTEMS

LAST REVISION: JAN 2019

ISSUED: MAR 2007

DRAWN: RIZ

SCALE: NTS

PUCCS-LLRC
D-10

* Wood Sheathing

DuROCK Roller Bear or Polar Bear Moisture Barrier

DuROCK Polar Bear Air/Moisture Barrier/Adhesive

DuROCK PUCCS, EPS Insulation Board
with 10mm (GDDC) Geometrically Defined
Drainage Cavity

DuROCK Reinforcing Mesh
embedded in DuROCK Prep Coat

DuROCK Finish Coat

* Self-Adhering Transition Membrane
lapped onto metal flashing

Wrap insulation edge with reinforcing mesh,
terminate base coat at GDDC

* Backer Rod and Sealant (vented)

* Metal Flashing

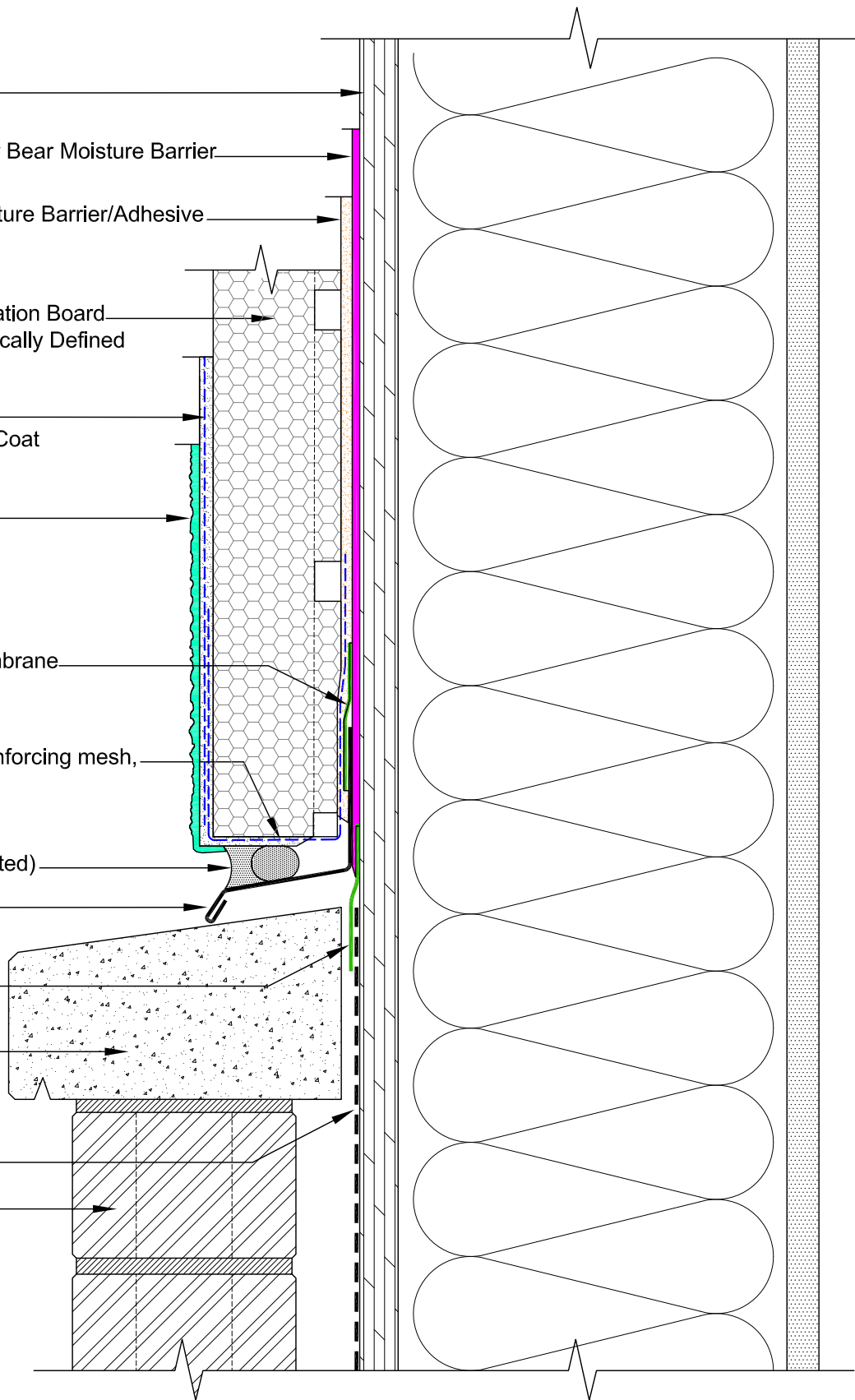
* Self-Adhering
Transition Membrane

* Concrete Sill

* Sheathing Membrane

* Brick Cladding

(* by others)



DuROCK SYSTEM:

PUCCS-LLRC

(FOR LOW-RISE RESIDENTIAL CONSTRUCTION)

DRAWING TITLE:

**TERMINATION AT CONCRETE SILL
(OPTION 1)
WITH METAL FLASHING**

This detail complements the corresponding system specification and illustrates the system configuration for the depicted construction. Visit www.durock.com for the latest revisions and contact DuROCK for project-specific details to suit conditions other than those depicted. DuROCK assumes no liability for the architecture, design, engineering, or workmanship of any project.

DuROCK

Alfacing International Limited

101-B ROYTEC ROAD
WOODBIDGE, ONTARIO
TEL : (905) 856-0133, FAX : (905) 856-9654
www.durock.com

ARCHITECTURAL FINISHING SYSTEMS

LAST REVISION: JAN 2019

ISSUED: MAR 2007

DRAWN: RIZ

SCALE: NTS

**PUCCS-LLRC
D-11**

* Wood Sheathing

DuROCK Roller Bear or Polar Bear Moisture Barrier

DuROCK Polar Bear Air/Moisture Barrier/Adhesive

DuROCK PUCCS, EPS Insulation Board
with 10mm (GDDC) Geometrically Defined
Drainage Cavity

DuROCK Reinforcing Mesh
embedded in DuROCK Prep Coat

DuROCK Finish Coat

Wrap insulation edge with
reinforcing mesh,
terminate base coat at drainage track

DuROCK Uni-Flash
self-flashing drainage track

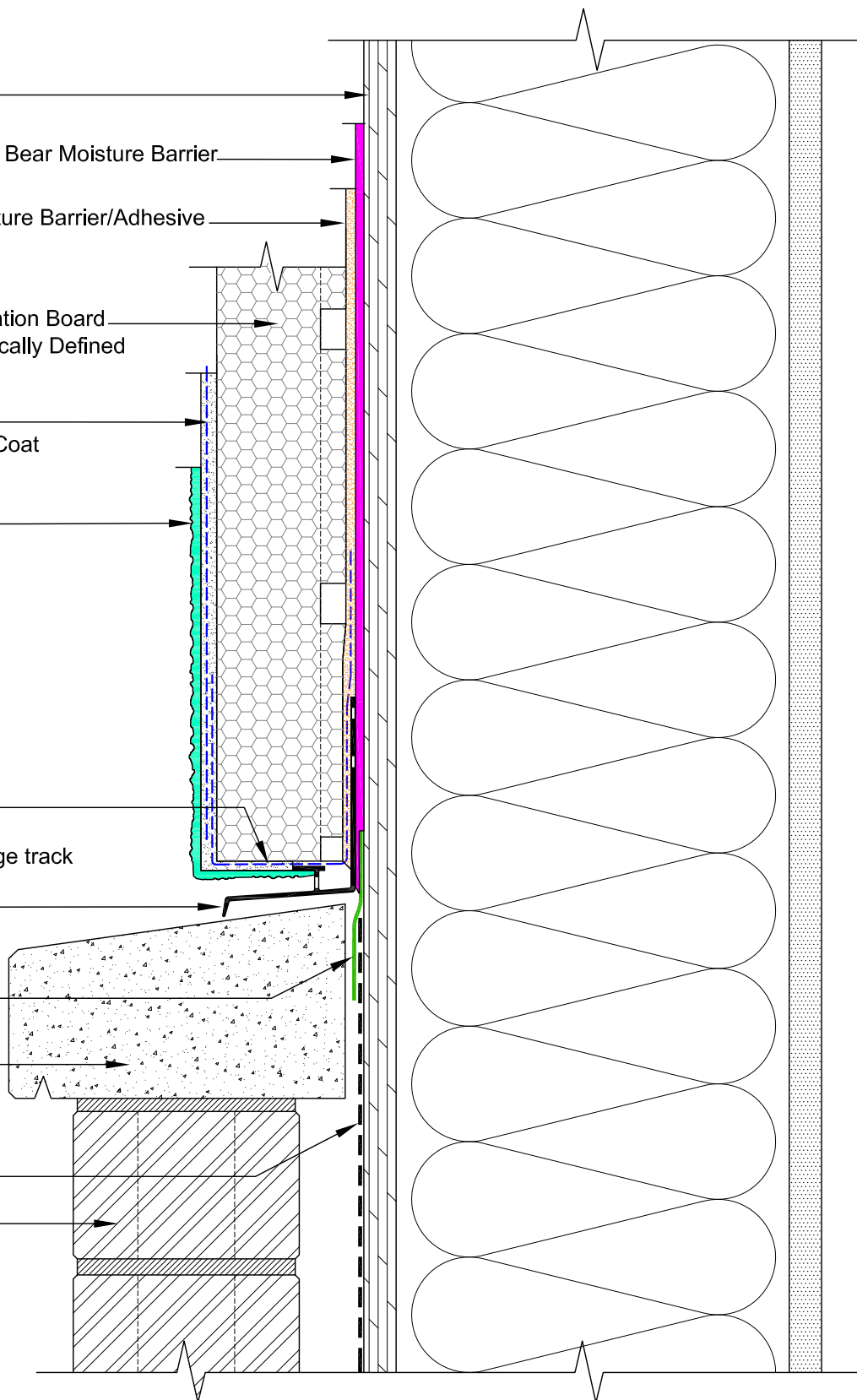
* Self-Adhering
Transition Membrane

* Concrete Sill

* Sheathing Membrane

* Brick Cladding

(* by others)



DuROCK SYSTEM:

PUCCS-LLRC

(FOR LOW-RISE RESIDENTIAL CONSTRUCTION)

DRAWING TITLE:

TERMINATION AT CONCRETE SILL (OPTION 2) WITH DuROCK PVC UNI-FLASH

This detail complements the corresponding system specification and illustrates the system configuration for the depicted construction. Visit www.durock.com for the latest revisions and contact DuROCK for project-specific details to suit conditions other than those depicted. DuROCK assumes no liability for the architecture, design, engineering, or workmanship of any project.

DuROCK

Alfacing International Limited

101-B ROYTEC ROAD
WOODBIDGE, ONTARIO
TEL : (905) 856-0133, FAX : (905) 856-9654
www.durock.com

ARCHITECTURAL FINISHING SYSTEMS

LAST REVISE: JAN 2019

ISSUED: MAR 2007

DRAWN: RIZ

SCALE: NTS

PUCCS-LLRC
D-12

* Wood Sheathing

DuROCK Roller Bear or Polar Bear Moisture Barrier

DuROCK Polar Bear Air/Moisture Barrier/Adhesive

DuROCK PUCCS, EPS Insulation Board
with 10mm (GDDC) Geometrically Defined
Drainage Cavity

DuROCK Reinforcing Mesh
embedded in DuROCK Prep Coat

DuROCK Finish Coat

Wrap insulation edge with reinforcing mesh,
terminate base coat at GDDC

* Backer Rod and Sealant (vented)

* Self-Adhering
Transition Membrane
lapped onto concrete sill

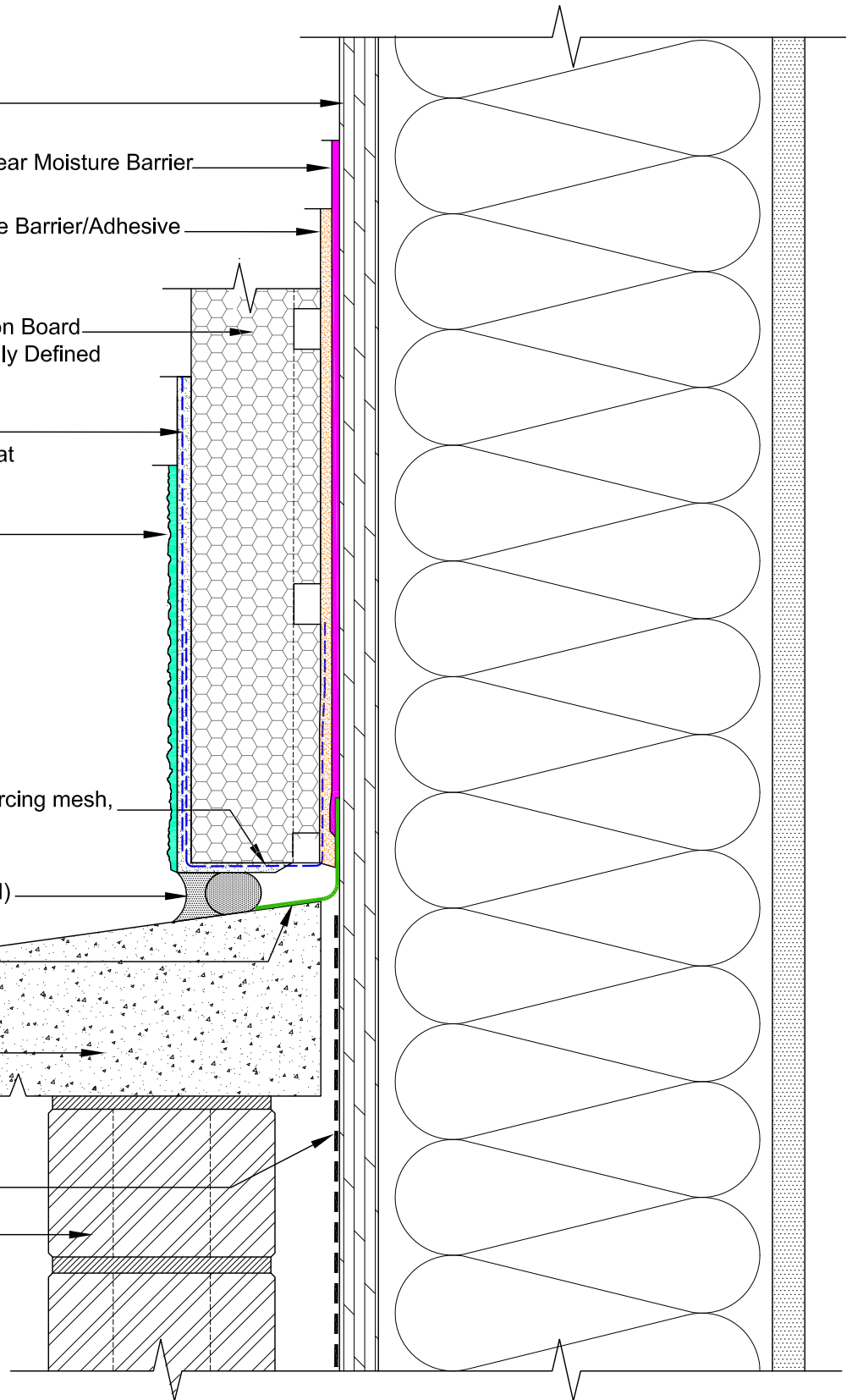
* Concrete Sill

* Sheathing Membrane

* Drained and vented
masonry veneer

(OPTION 3)

(* by others)



DuROCK SYSTEM:

PUCCS-LLRC

(FOR LOW-RISE RESIDENTIAL CONSTRUCTION)

DRAWING TITLE:

**TERMINATION AT CONCRETE SILL
(OPTION 3)
WITH MEMBRANE**

This detail complements the corresponding system specification and illustrates the system configuration for the depicted construction. Visit www.durock.com for the latest revisions and contact DuROCK for project-specific details to suit conditions other than those depicted. DuROCK assumes no liability for the architecture, design, engineering, or workmanship of any project.

DuROCK

Alfacing International Limited

101-B ROYTEC ROAD
WOODBIDGE, ONTARIO
TEL : (905) 856-0133, FAX : (905) 856-9654
www.durock.com

ARCHITECTURAL FINISHING SYSTEMS

LAST REVISION: FEB 2019

ISSUED: MAR 2007

DRAWN: RIZ

SCALE: NTS

**PUCCS-LLRC
D-13**

* Wood Sheathing

DuROCK Roller Bear or Polar Bear Moisture Barrier

DuROCK Polar Bear Moisture Barrier/Adhesive

DuROCK PUCCS, EPS Insulation Board
with 10mm (GDDC) Geometrically Defined
Drainage Cavity

DuROCK Reinforcing Mesh
embedded in DuROCK Prep Coat

DuROCK Finish Coat

Wrap insulation edge with
reinforcing mesh,
terminate base coat at drainage track

DuROCK Uni-Track
drainage track with lip

Minumum 200mm (8")
clearance required
above grade level

T.O. GRADE

(* by others)

DuROCK SYSTEM:

PUCCS-LLRC

(FOR LOW-RISE RESIDENTIAL CONSTRUCTION)

DRAWING TITLE:

TERMINATION AT GRADE

This detail complements the corresponding system specification and illustrates the system configuration for the depicted construction. Visit www.durock.com for the latest revisions and contact DuROCK for project-specific details to suit conditions other than those depicted. DuROCK assumes no liability for the architecture, design, engineering, or workmanship of any project.

DuROCK

Alfacing International Limited

101-B ROYTEC ROAD
WOODBIDGE, ONTARIO
TEL : (905) 856-0133, FAX : (905) 856-9654
www.durock.com

ARCHITECTURAL FINISHING SYSTEMS

LAST REVISE: JAN 2019

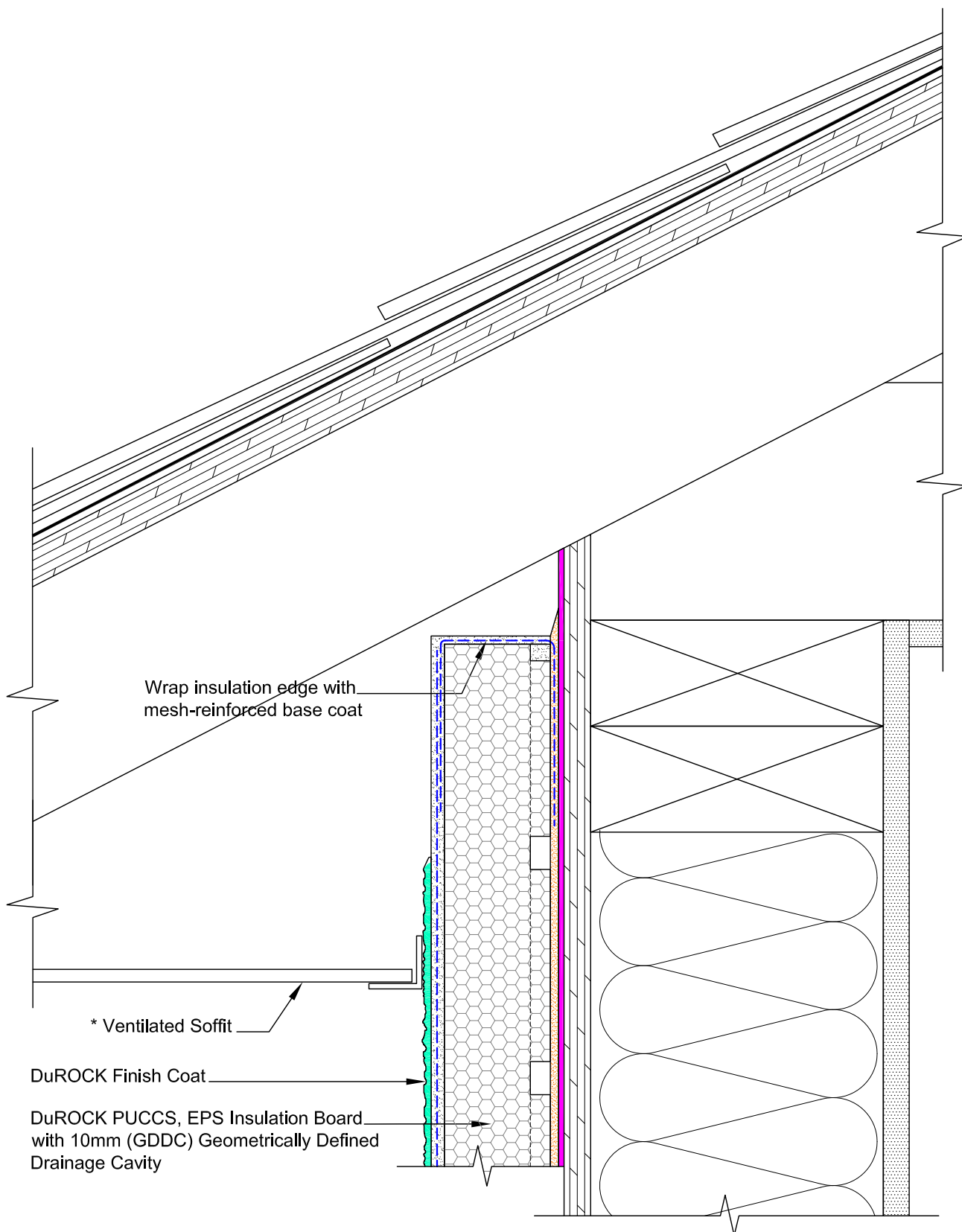
ISSUED: MAR 2007

DRAWN: RIZ

SCALE: NTS

PUCCS-LLRC

D-14



(* by others)

DuROCK SYSTEM:

Puccs-LLRC

(FOR LOW-RISE RESIDENTIAL CONSTRUCTION)

DRAWING TITLE:

TERMINATION AT SOFFIT

This detail complements the corresponding system specification and illustrates the system configuration for the depicted construction. Visit www.durock.com for the latest revisions and contact DuROCK for project-specific details to suit conditions other than those depicted. DuROCK assumes no liability for the architecture, design, engineering, or workmanship of any project.

DuROCK

Alfacing International Limited

101-B ROYTEC ROAD
WOODBRIDGE, ONTARIO
TEL : (905) 856-0133, FAX : (905) 856-9654
www.durock.com

ARCHITECTURAL FINISHING SYSTEMS

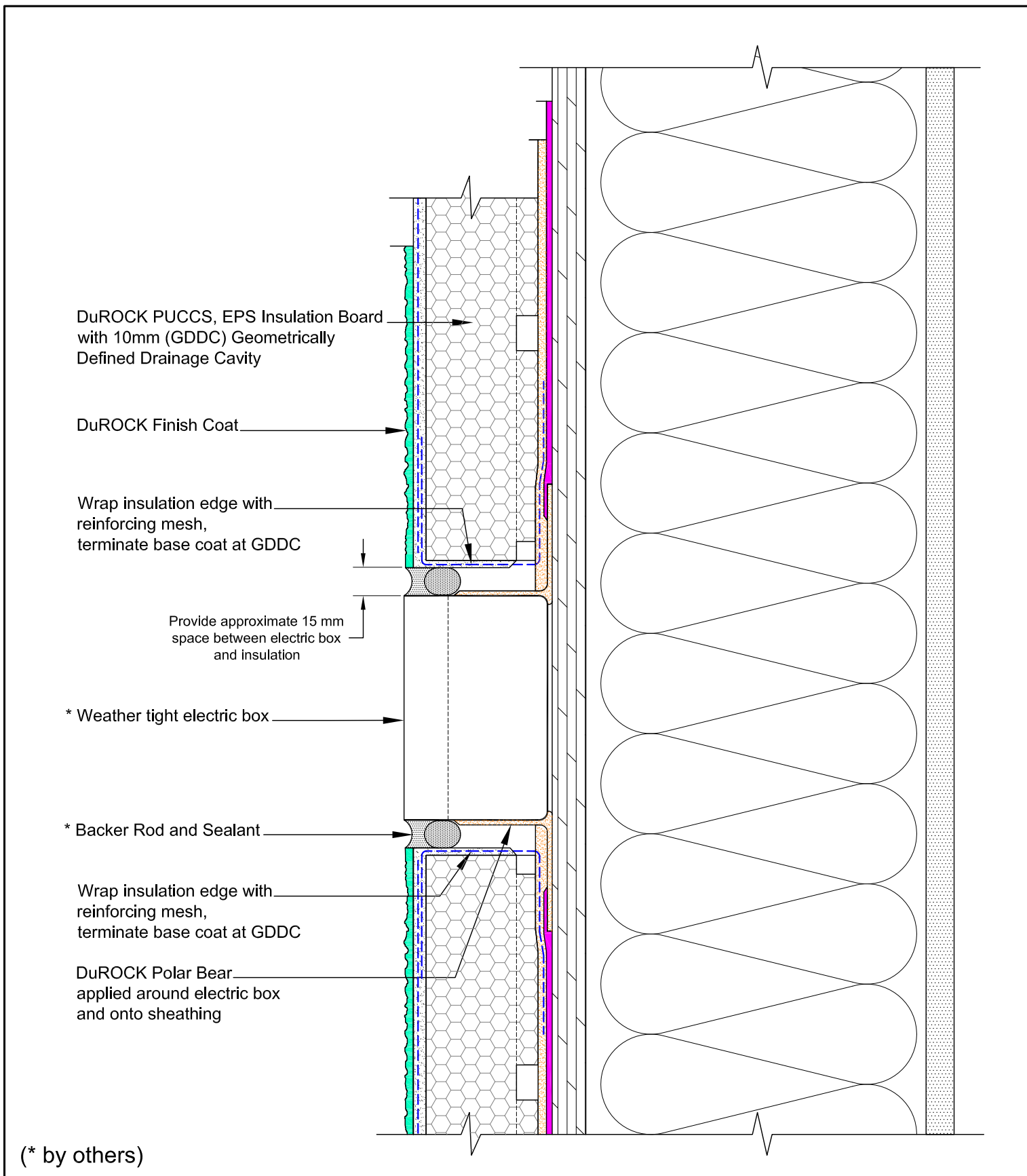
LAST REVISE: JAN 2019

ISSUED: MAR 2007

DRAWN: RIZ

SCALE: NTS

Puccs-LLRC
D-15



DuROCK SYSTEM:

PUCCS-LLRC

(FOR LOW-RISE RESIDENTIAL CONSTRUCTION)

DRAWING TITLE:

EXTERIOR ELECTRIC BOX PENETRATION

This detail complements the corresponding system specification and illustrates the system configuration for the depicted construction. Visit www.durock.com for the latest revisions and contact DuROCK for project-specific details to suit conditions other than those depicted. DuROCK assumes no liability for the architecture, design, engineering, or workmanship of any project.

DuROCK

Alfacing International Limited

101-B ROYTEC ROAD
WOODBRIDGE, ONTARIO
TEL : (905) 856-0133, FAX : (905) 856-9654
www.durock.com

ARCHITECTURAL FINISHING SYSTEMS

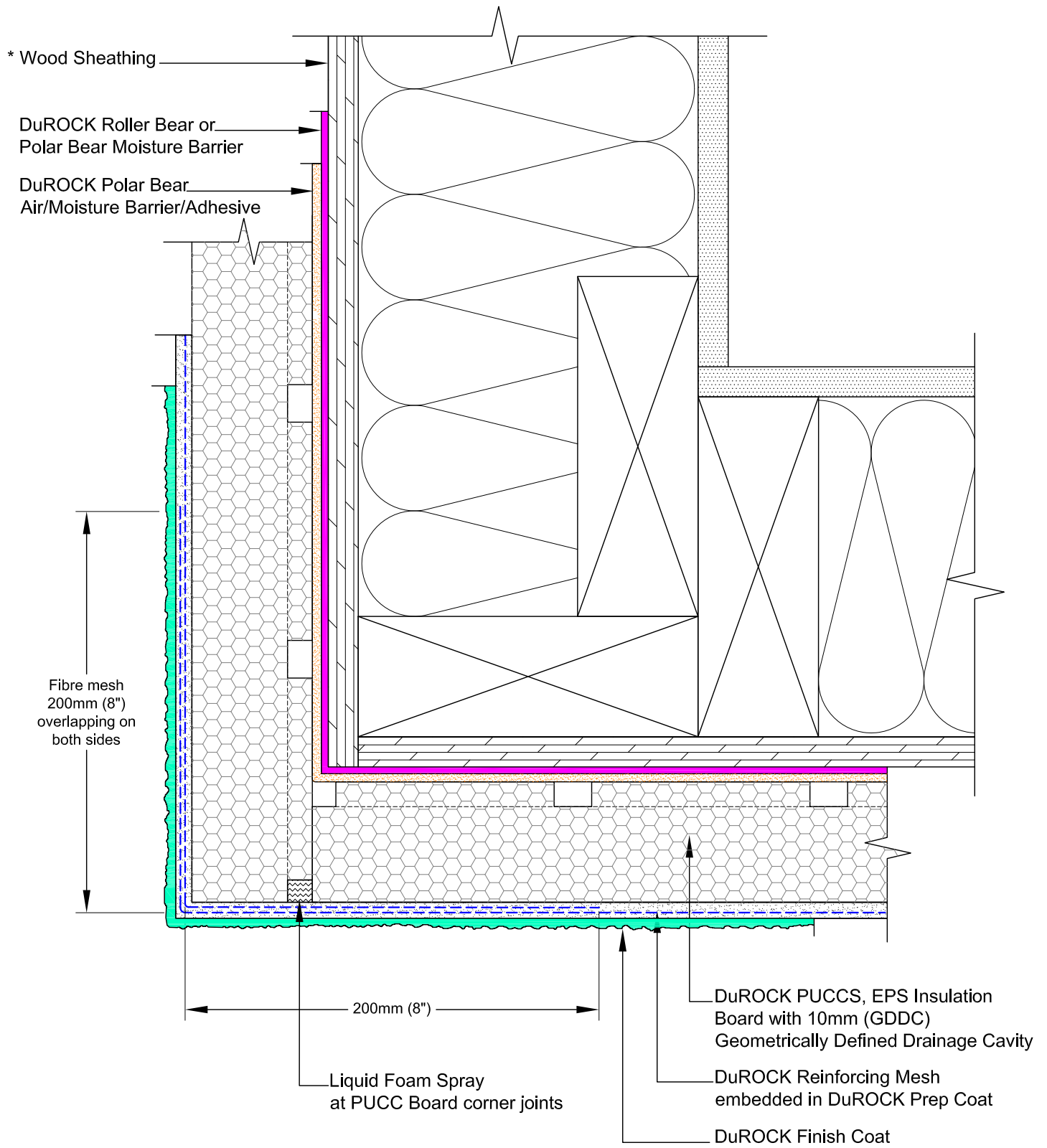
LAST REVISE: JAN 2019

ISSUED: MAR 2007

DRAWN: RIZ

SCALE: NTS

PUCCS-LLRC
D-16



(* by others)

DuROCK SYSTEM:

Puccs-LLRC

(FOR LOW-RISE RESIDENTIAL CONSTRUCTION)

DRAWING TITLE:

OUTSIDE CORNER TREATMENT
(PLAN DETAIL)

This detail complements the corresponding system specification and illustrates the system configuration for the depicted construction. Visit www.durock.com for the latest revisions and contact DuROCK for project-specific details to suit conditions other than those depicted. DuROCK assumes no liability for the architecture, design, engineering, or workmanship of any project.

DuROCK

Alfacing International Limited

101-B ROYTEC ROAD
WOODBIDGE, ONTARIO
TEL : (905) 856-0133, FAX : (905) 856-9654
www.durock.com

ARCHITECTURAL FINISHING SYSTEMS

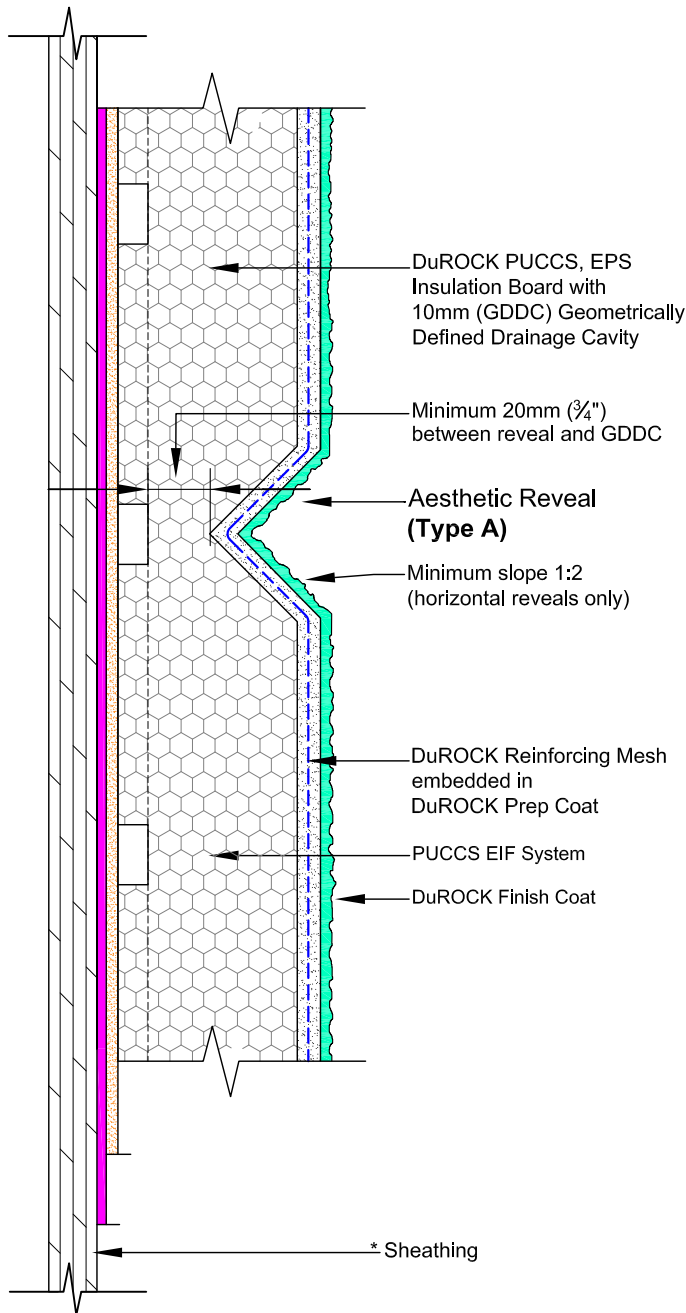
LAST REVISE: JAN 2019

ISSUED: MAR 2007

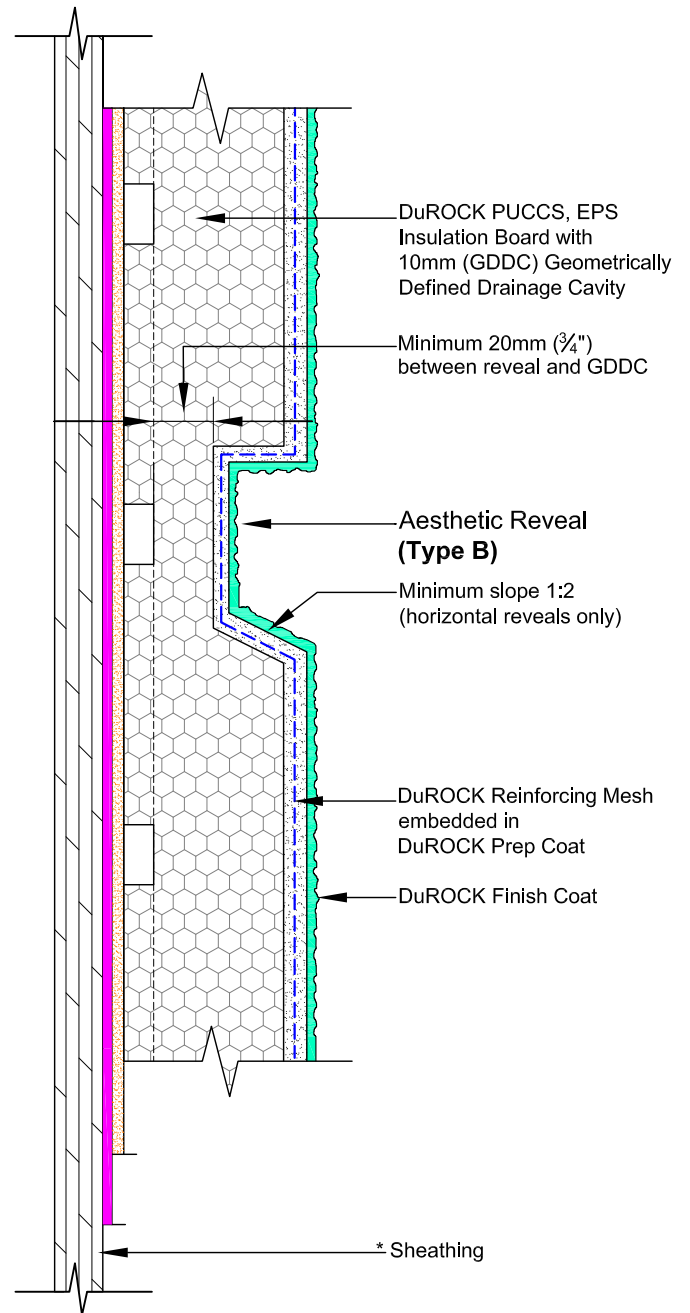
DRAWN: RIZ

SCALE: NTS

Puccs-LLRC
D-17



**AESTHETIC REVEAL
(TYPE A)**



**AESTHETIC REVEAL
(TYPE B)**

(* by others)

DuROCK SYSTEM:
PUCCS-LLRC
(FOR LOW-RISE RESIDENTIAL CONSTRUCTION)

DRAWING TITLE:
**AESTHETIC REVEAL
(VERTICAL SECTIONS)**

This detail complements the corresponding system specification and illustrates the system configuration for the depicted construction. Visit www.durock.com for the latest revisions and contact DuROCK for project-specific details to suit conditions other than those depicted. DuROCK assumes no liability for the architecture, design, engineering, or workmanship of any project.

DuROCK
Alfacing International Limited
101-B ROYTEC ROAD
WOODBIDGE, ONTARIO
TEL : (905) 856-0133, FAX : (905) 856-9654
www.durock.com
ARCHITECTURAL FINISHING SYSTEMS

LAST REVISION:	JAN 2019
ISSUED:	MAR 2007
DRAWN:	RIZ
SCALE:	NTS
PUCCS-LLRC D-18	