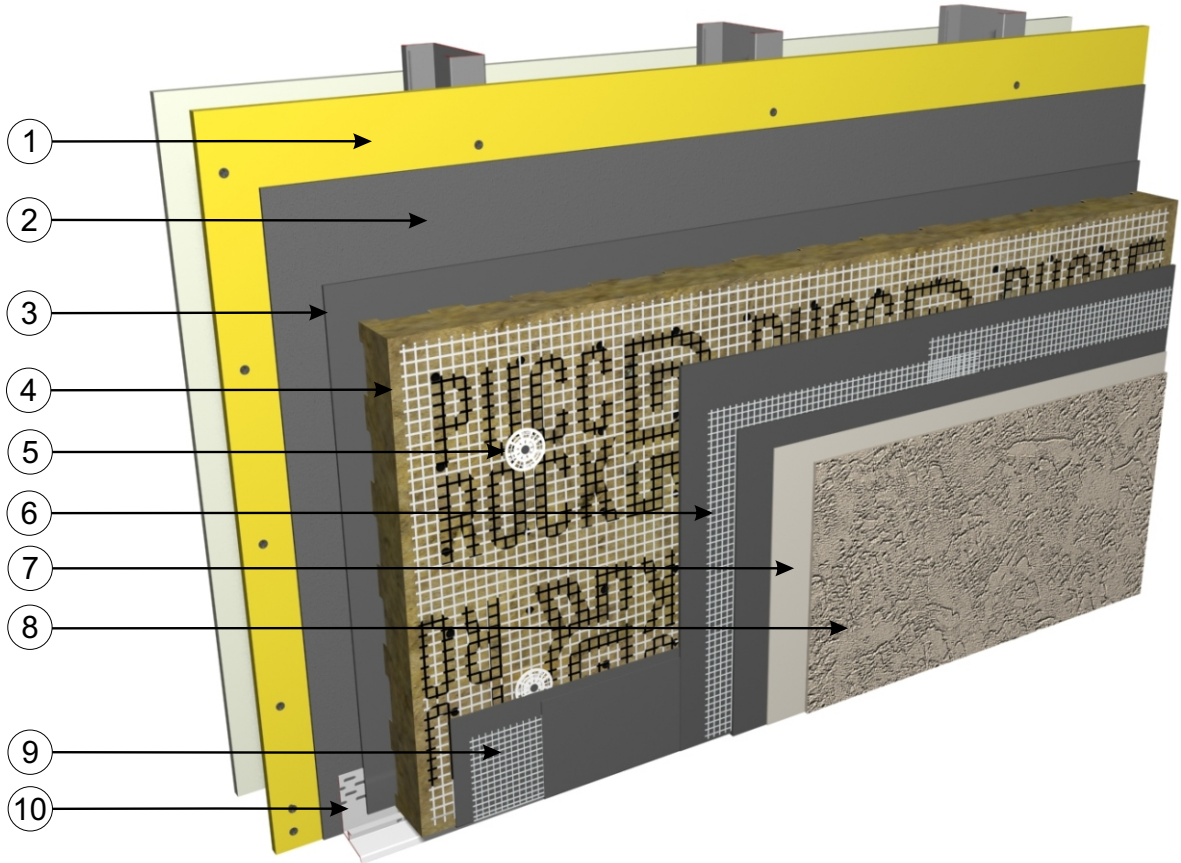


(PATENT PENDING)



PUCCS NC STANDARD WALL SECTION



- ① *Sheathing
- ② DuROCK Air/Moisture Barrier
- ③ DuROCK Moisture Barrier/Adhesive
- ④ DuROCK **PUCC-ROCK** Mineral Wool Insulation Board with integral reinforcing mesh
- ⑤ Mechanical Fastener through the dimple in the centre of the PUCC and into the framing
- ⑥ DuROCK 5oz. Reinforcing Mesh embedded in DuROCK Base Coat
- ⑦ DuROCK Base Primer
- ⑧ DuROCK Finish Coat
- ⑨ Back-Wrapped Starter Mesh
- ⑩ DuROCK Uni-Flash self-flashing drainage track

(* by others)

DuROCK
ARCHITECTURAL FINISHING SYSTEMS



Alfacing International Limited
101 B.ROYTEC ROAD, WOODBRIDGE, ON, L4L 8A9
TEL: (905) 856-0133, FAX: (905) 856-9654
www.durock.com

ARCHITECTURAL FINISHING SYSTEMS

This detail complements the corresponding system specification and illustrates the system configuration for the depicted construction. Visit www.durock.com for the latest revisions and contact DuRock for project-specific details to suit conditions other than those depicted. DuRock assumes no liability for the architecture, design, engineering, or workmanship of any project.

PUCCS-NC
Revision 01: Nov 2019
Issued: Jan 2019
COVER

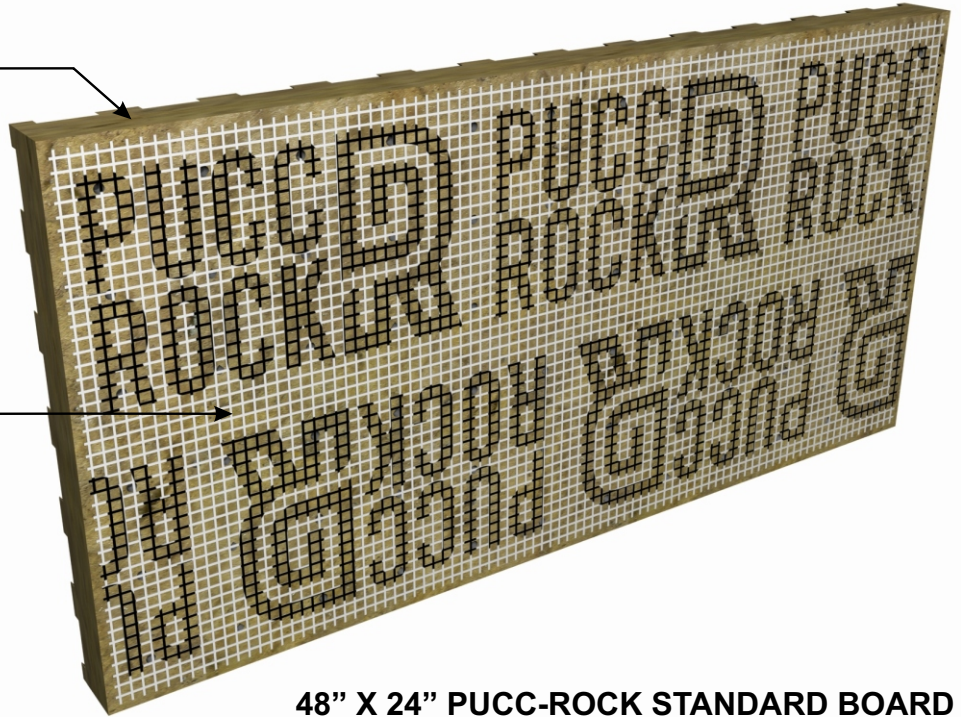
**PUCCS NC Non-Combustible EIFS Cladding
 with PUCC-ROCK GDDC Mineral Wool Insulation**



PUCC-ROCK MINERAL WOOL INSULATION BOARD

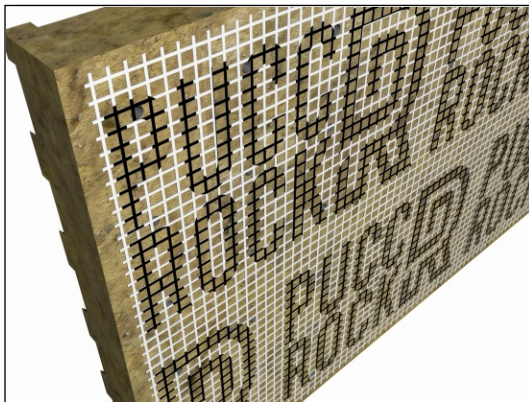
48" x 24"
 DuROCK PUCC-ROCK
 Mineral Wool Insulation board
 with 10mm Geometrically Defined
 Drainage Cavity (GDDC)

DuROCK Fibre Mesh
 pre-adhered to PUCC-ROCK
 Insulation Board

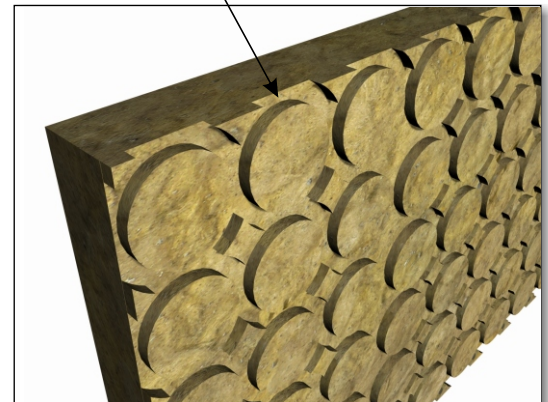


48" X 24" PUCC-ROCK STANDARD BOARD

Moisture drainage through
 10mm Geometrically Defined
 Drainage Cavity (GDDC)



PUCC-ROCK FRONT VIEW

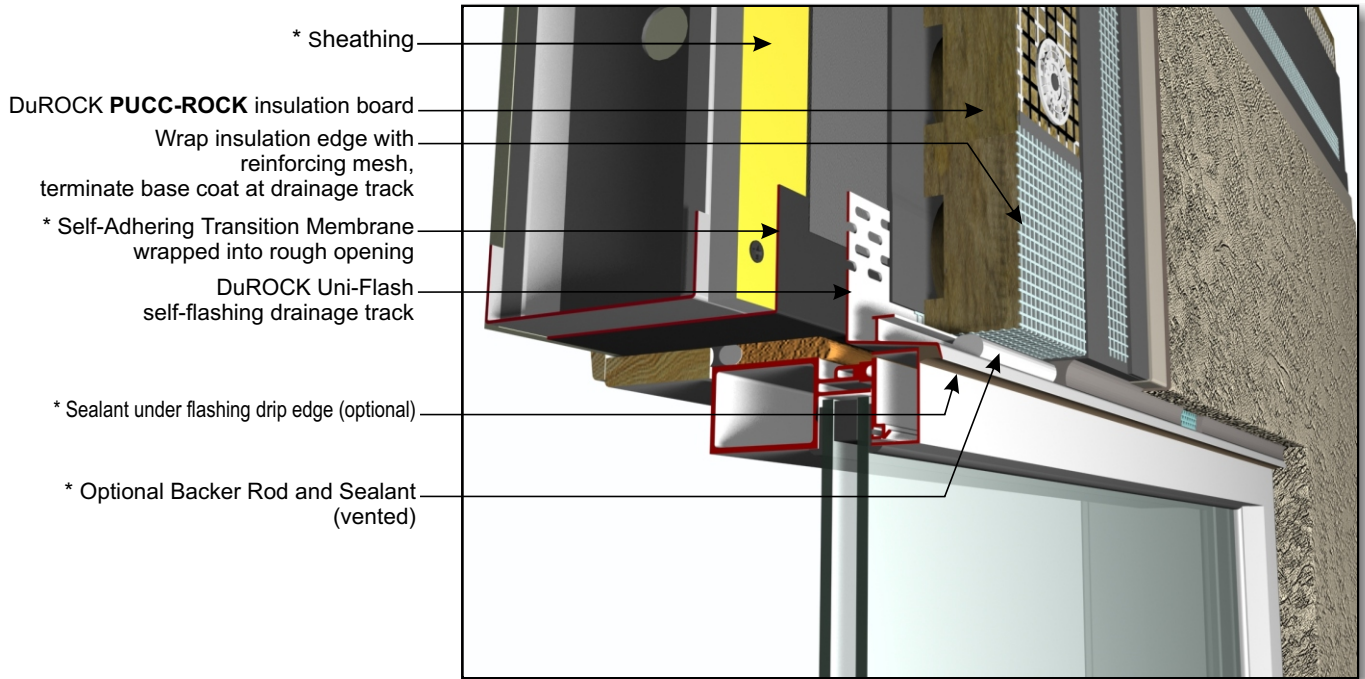


PUCC-ROCK BACK VIEW

ARCHITECTURAL FINISHING SYSTEMS

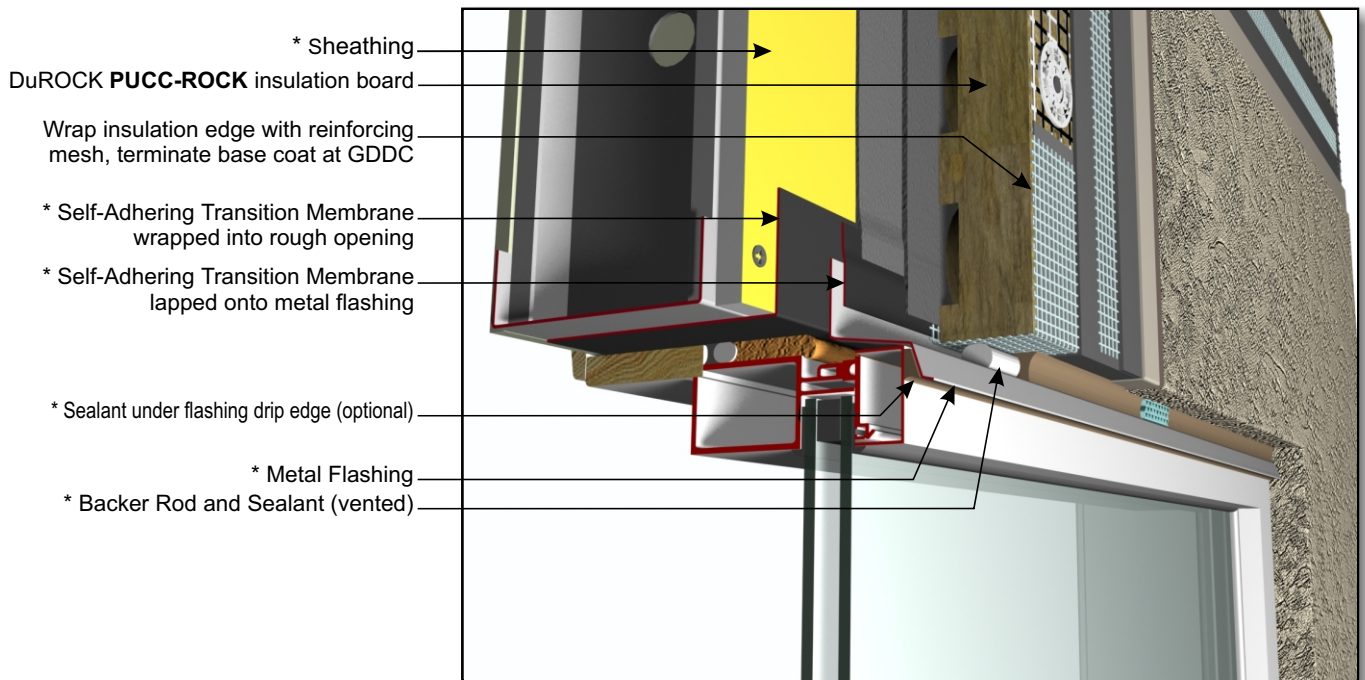
**PUCCS NC Non-Combustible EIFS Cladding
 with PUCC-ROCK GDDC Mineral Wool Insulation**

DuROCK
 ARCHITECTURAL FINISHING SYSTEMS



- * Sheathing
- DuROCK **PUCC-ROCK** insulation board
- Wrap insulation edge with reinforcing mesh, terminate base coat at drainage track
- * Self-Adhering Transition Membrane wrapped into rough opening
- DuROCK Uni-Flash self-flashing drainage track
- * Sealant under flashing drip edge (optional)
- * Optional Backer Rod and Sealant (vented)

D01, WINDOW HEADER WITH DuROCK UNI-FLASH



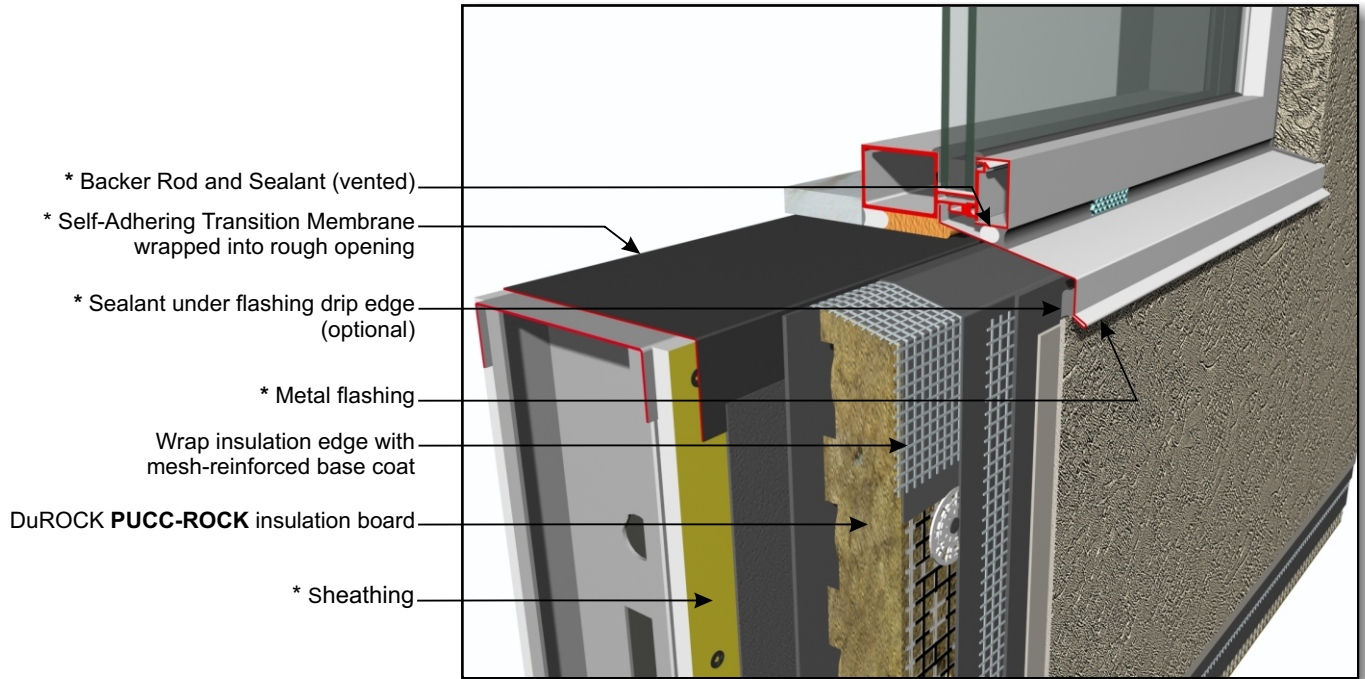
- * Sheathing
- DuROCK **PUCC-ROCK** insulation board
- Wrap insulation edge with reinforcing mesh, terminate base coat at GDDC
- * Self-Adhering Transition Membrane wrapped into rough opening
- * Self-Adhering Transition Membrane lapped onto metal flashing
- * Sealant under flashing drip edge (optional)
- * Metal Flashing
- * Backer Rod and Sealant (vented)

D02, WINDOW HEADER WITH METAL FLASHING

(* by others)

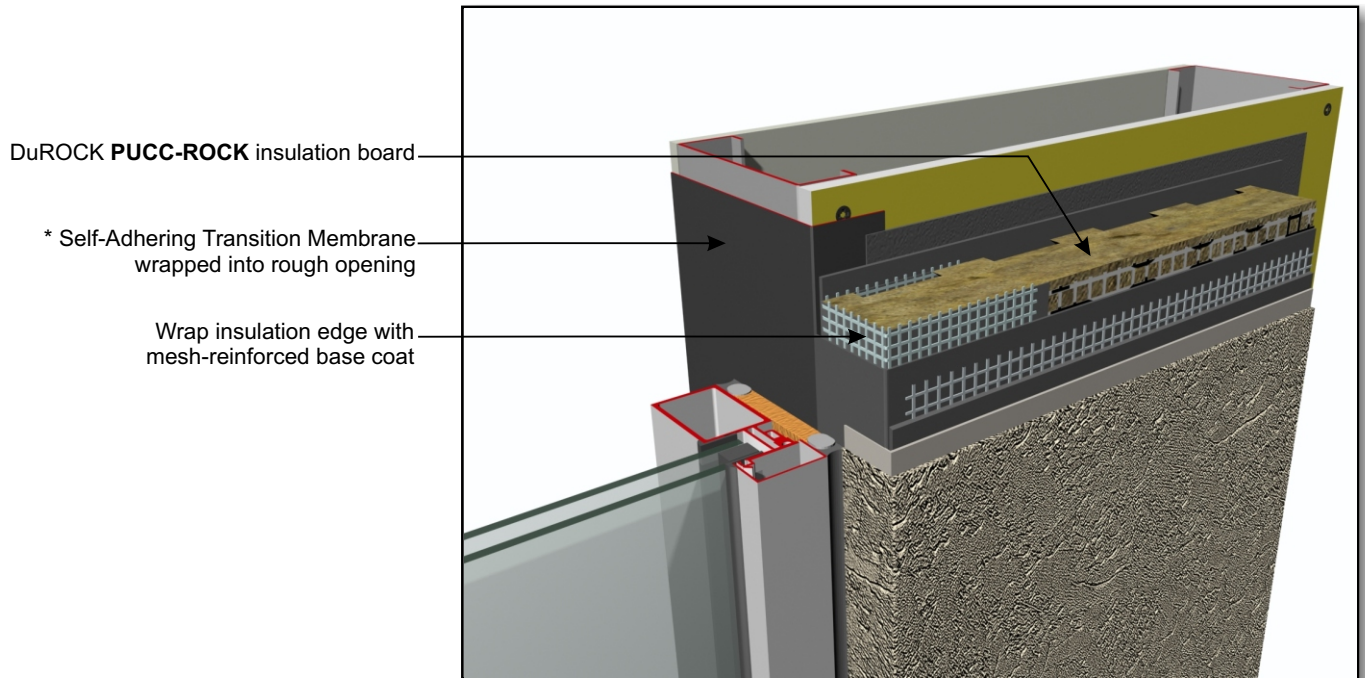
**PUCCS NC Non-Combustible EIFS Cladding
 with PUCC-ROCK GDDC Mineral Wool Insulation**

DuROCK
 ARCHITECTURAL FINISHING SYSTEMS



- * Backer Rod and Sealant (vented)
- * Self-Adhering Transition Membrane wrapped into rough opening
- * Sealant under flashing drip edge (optional)
- * Metal flashing
- Wrap insulation edge with mesh-reinforced base coat
- DuROCK **PUCC-ROCK** insulation board
- * Sheathing

D03, TERMINATION AT WINDOW SILL



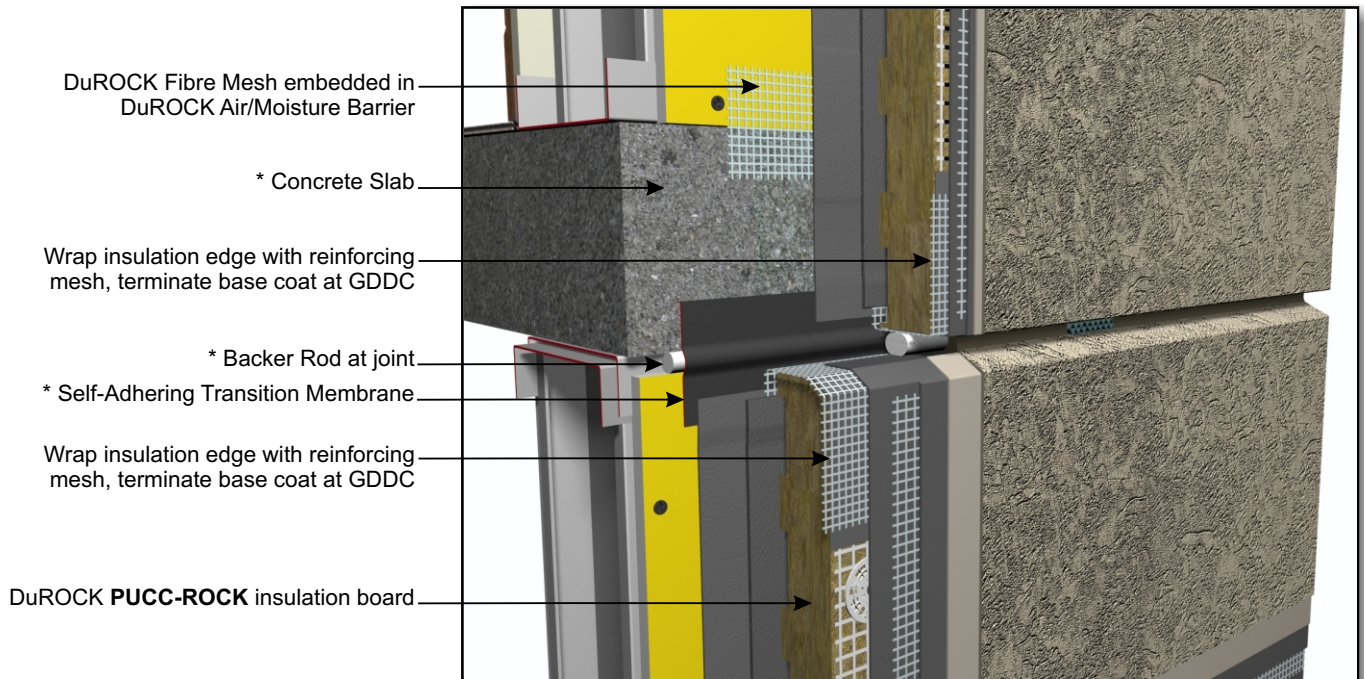
- DuROCK **PUCC-ROCK** insulation board
- * Self-Adhering Transition Membrane wrapped into rough opening
- Wrap insulation edge with mesh-reinforced base coat

D04, TERMINATION AT WINDOW JAMB

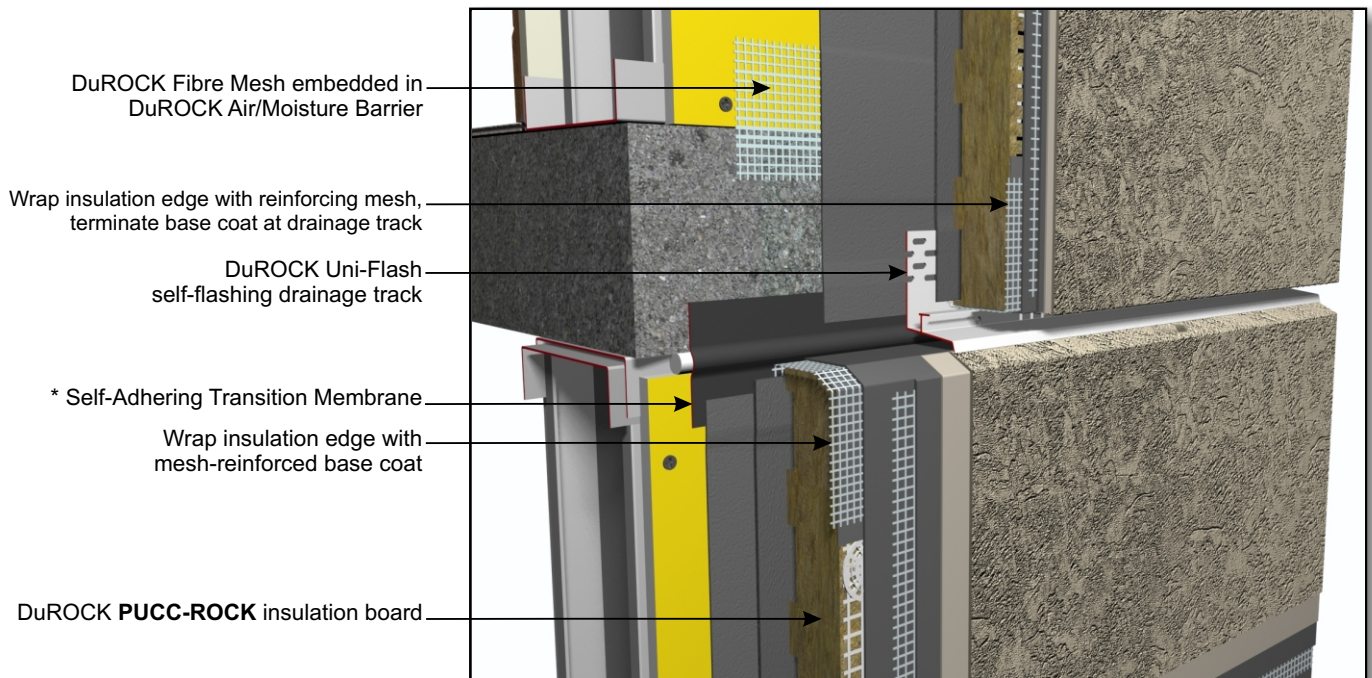
(* by others)

**PUCCS NC Non-Combustible EIFS Cladding
 with PUCC-ROCK GDDC Mineral Wool Insulation**

DuROCK
ARCHITECTURAL FINISHING SYSTEMS



D05, SEALED HORIZONTAL EXPANSION JOINT

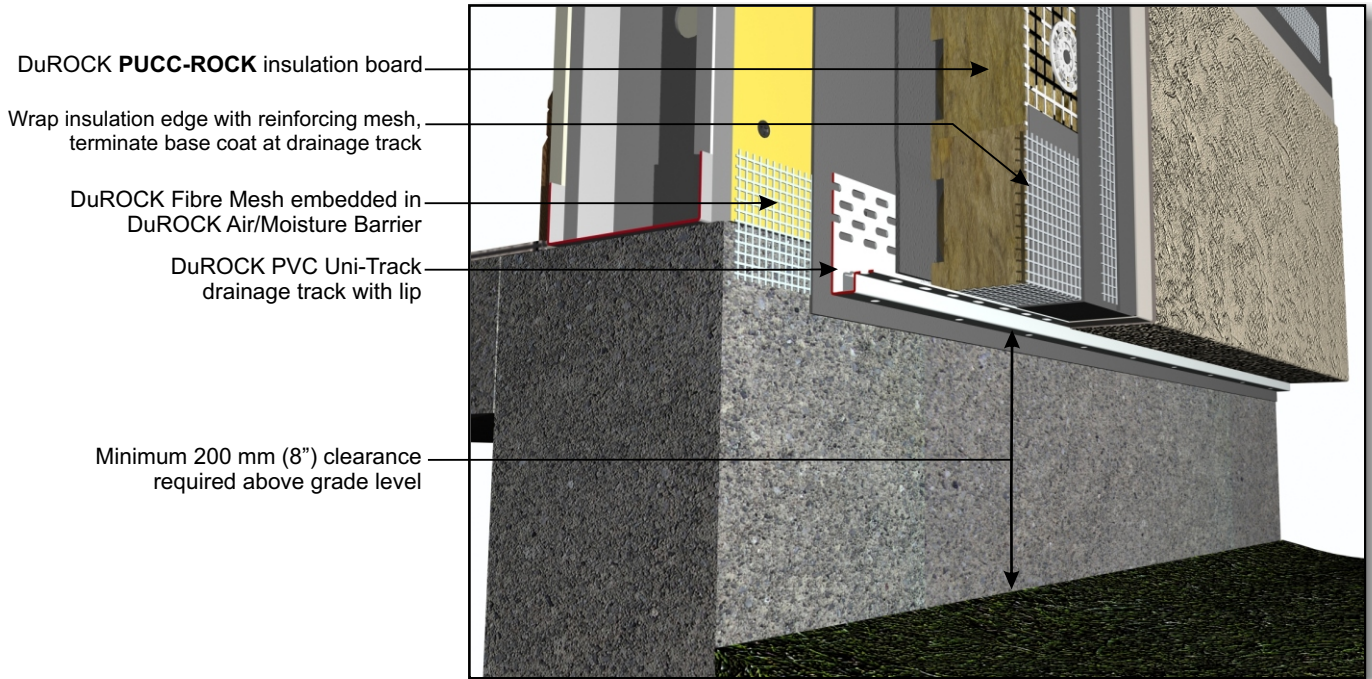


D06, DRAINED HORIZONTAL EXPANSION JOINT

(* by others)

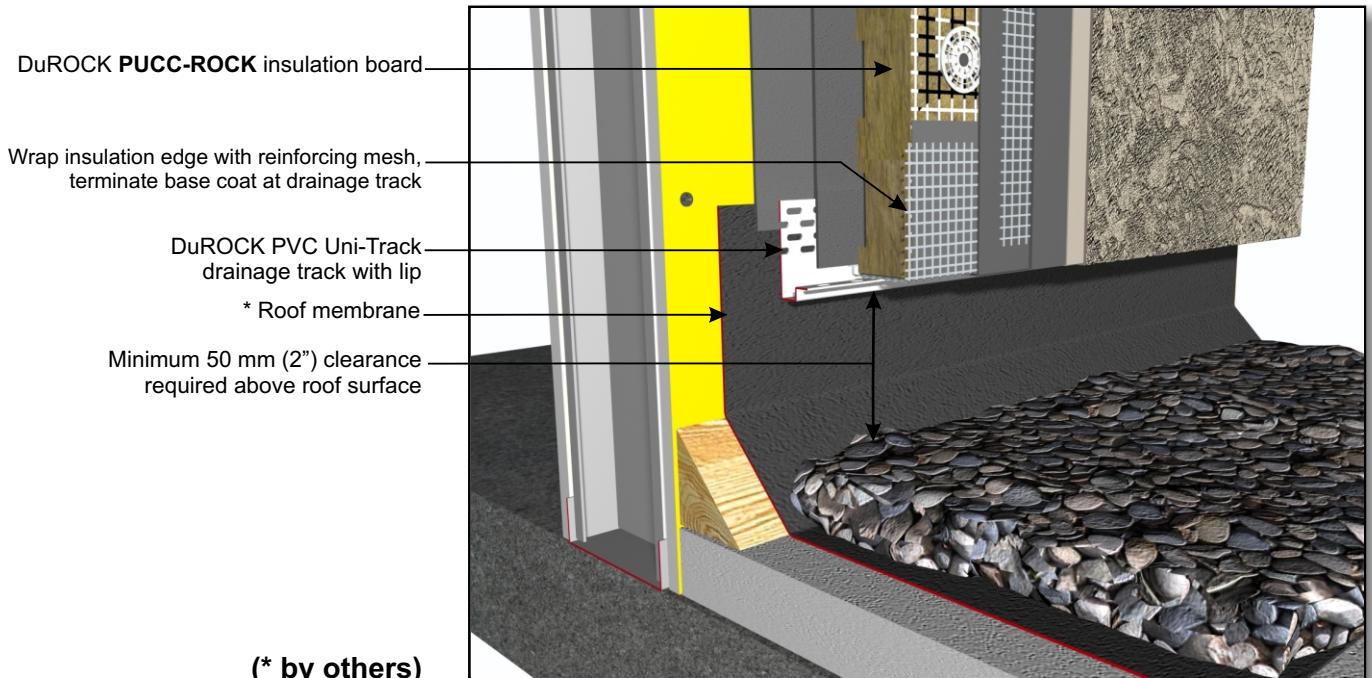
**PUCCS NC Non-Combustible EIFS Cladding
 with PUCC-ROCK GDDC Mineral Wool Insulation**

DuROCK
 ARCHITECTURAL FINISHING SYSTEMS



- DuROCK **PUCC-ROCK** insulation board
- Wrap insulation edge with reinforcing mesh, terminate base coat at drainage track
- DuROCK Fibre Mesh embedded in DuROCK Air/Moisture Barrier
- DuROCK PVC Uni-Track drainage track with lip
- Minimum 200 mm (8") clearance required above grade level

D07, EIFS TERMINATION AT GRADE



- DuROCK **PUCC-ROCK** insulation board
- Wrap insulation edge with reinforcing mesh, terminate base coat at drainage track
- DuROCK PVC Uni-Track drainage track with lip
- * Roof membrane
- Minimum 50 mm (2") clearance required above roof surface

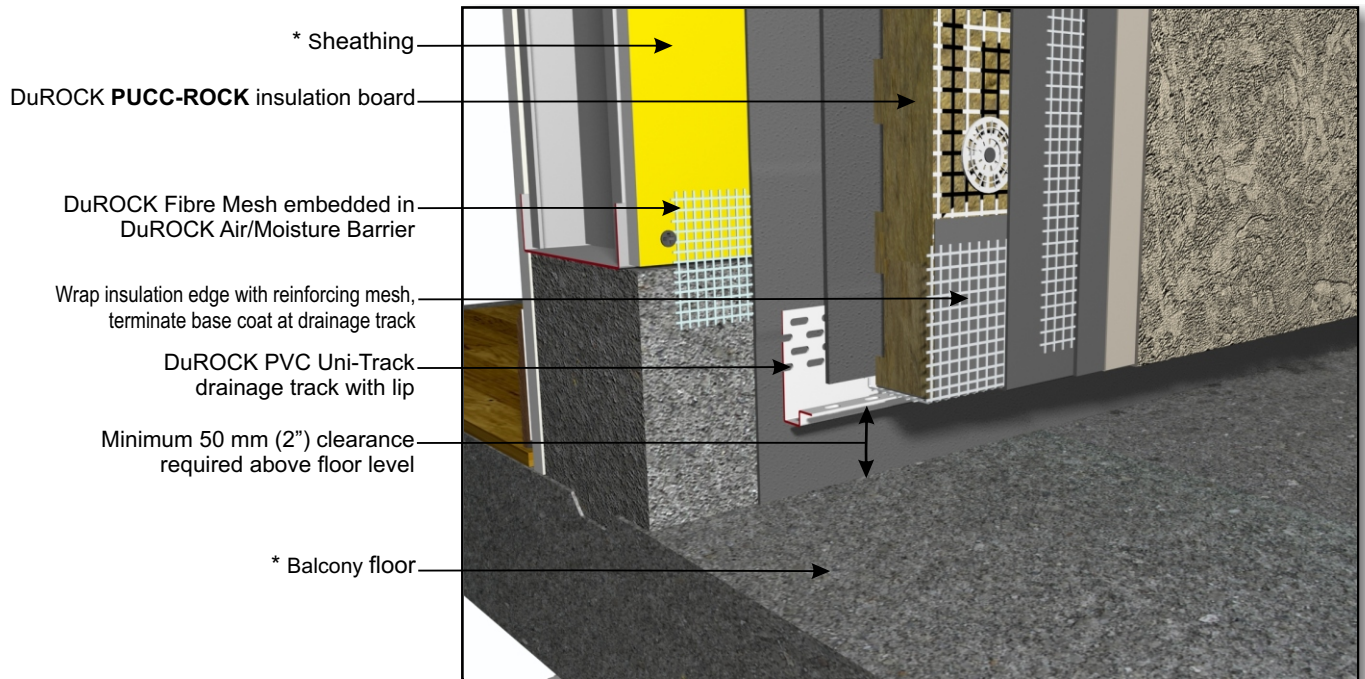
(* by others)

D08, EIFS TERMINATION AT FLAT ROOF

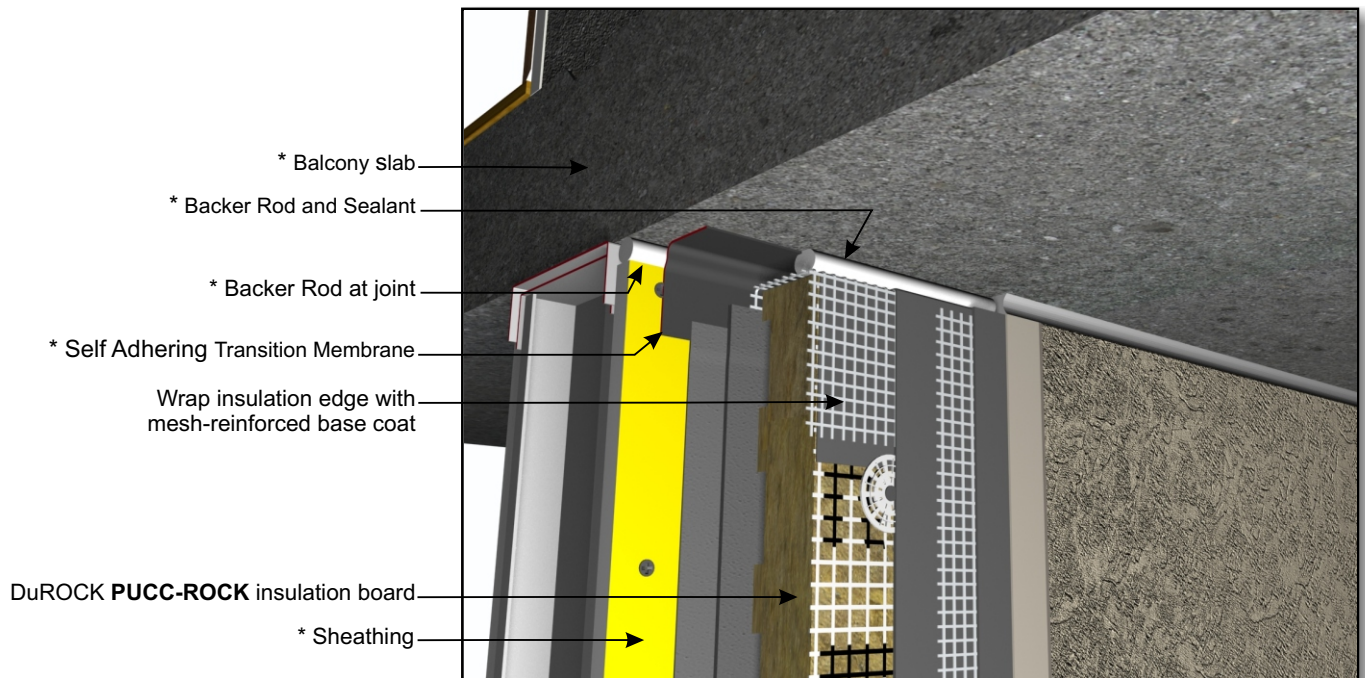
(* by others)

**PUCCS NC Non-Combustible EIFS Cladding
 with PUC-ROCK GDDC Mineral Wool Insulation**

DuROCK
 ARCHITECTURAL FINISHING SYSTEMS



D09, TERMINATION AT BALCONY (ABOVE SLAB)

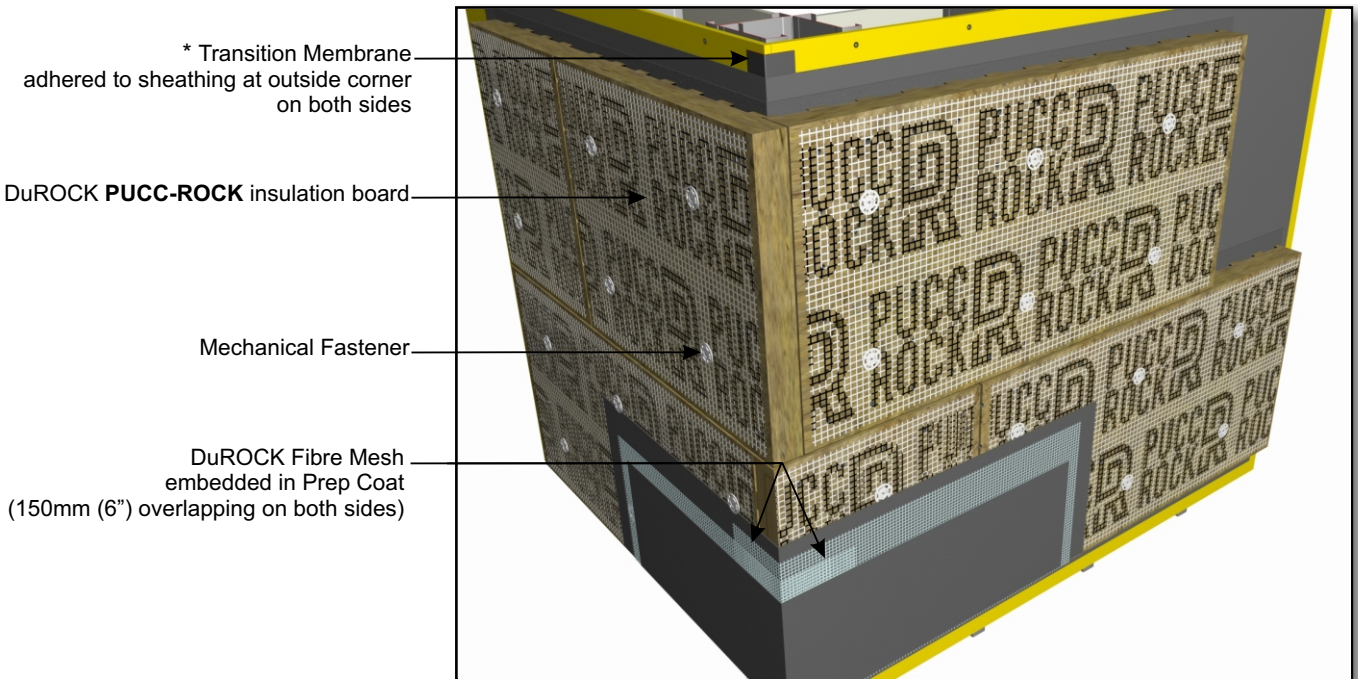


D09-A, TERMINATION AT BALCONY (BELOW SLAB)

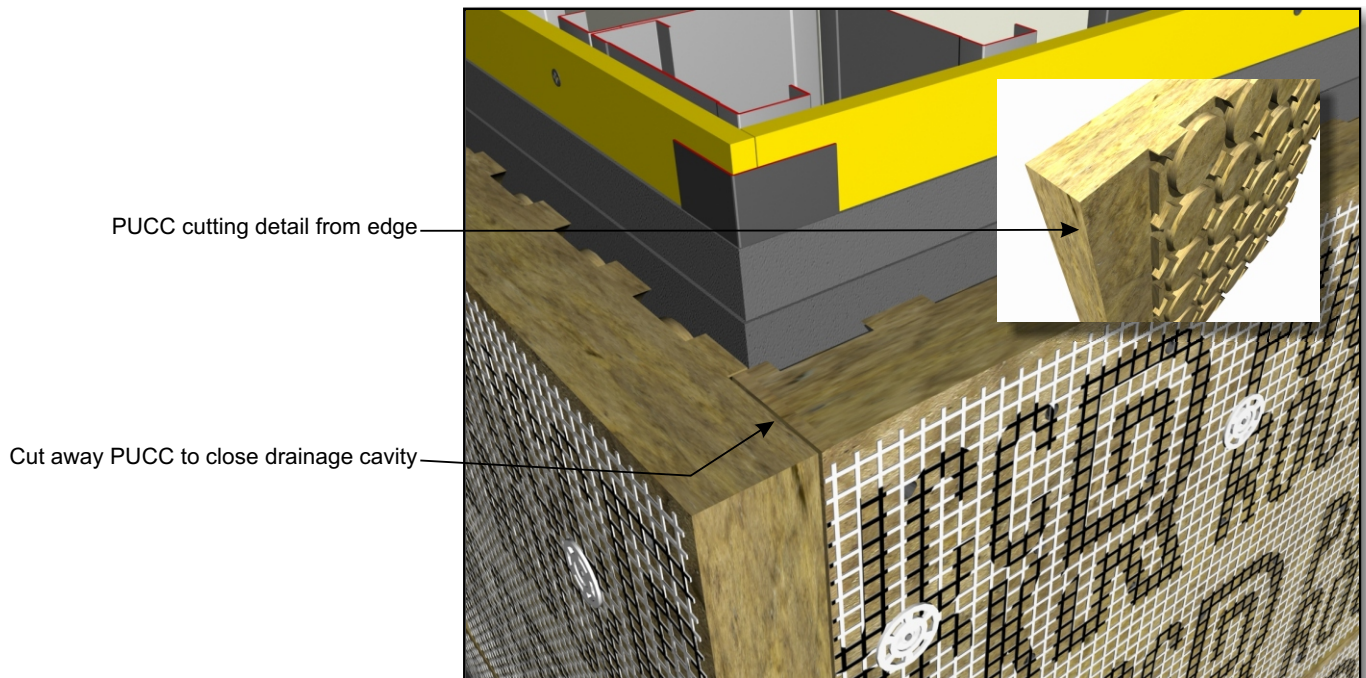
(* by others)

**PUCCS NC Non-Combustible EIFS Cladding
 with PUCC-ROCK GDDC Mineral Wool Insulation**

DuROCK
 ARCHITECTURAL FINISHING SYSTEMS



D10, PUCC-ROCK OUTSIDE CORNER INTERLOCKING DETAIL

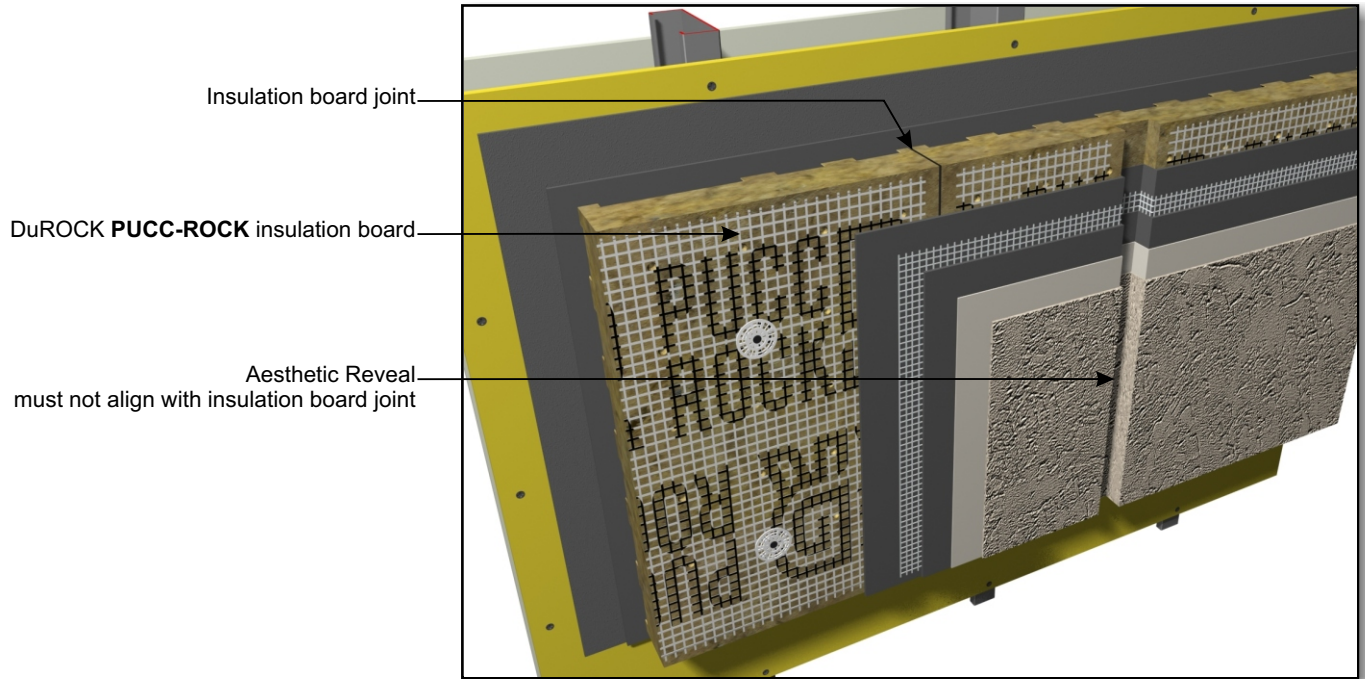


D10-A, PUCC-ROCK OUTSIDE CORNER JOINT

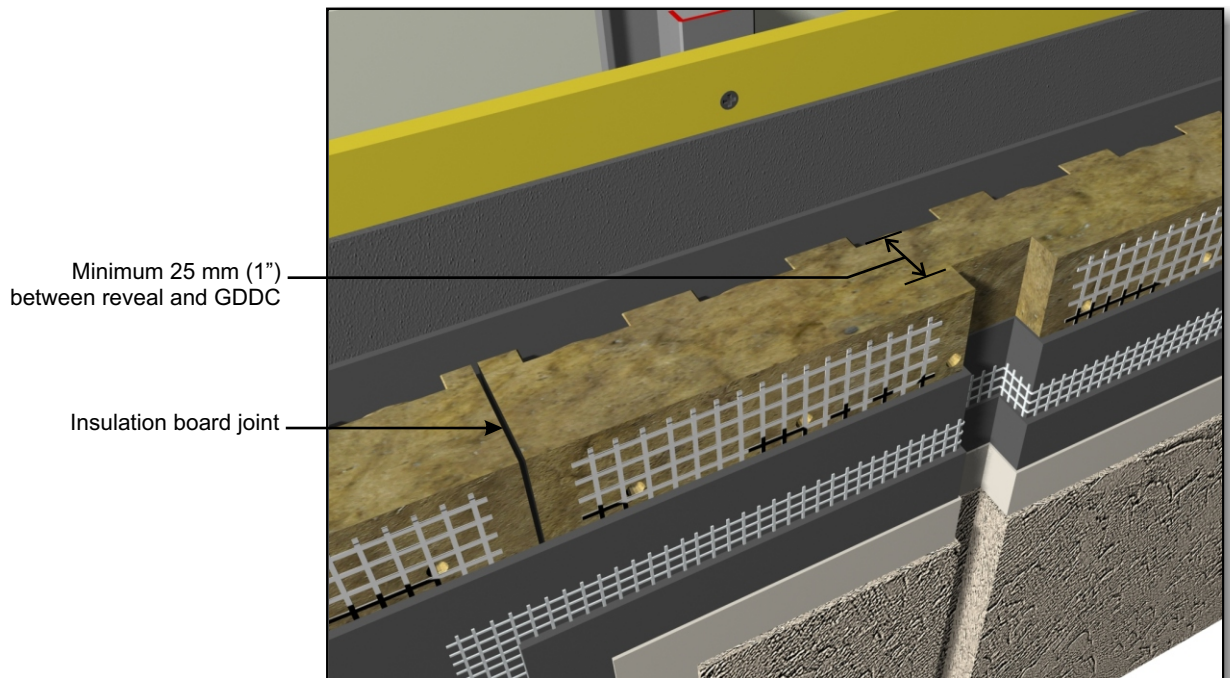
(* by others)

**PUCCS NC Non-Combustible EIFS Cladding
 with PUCC-ROCK GDDC Mineral Wool Insulation**

DuROCK
 ARCHITECTURAL FINISHING SYSTEMS



D11, AESTHETIC REVEAL (VIEW A)



D11A, AESTHETIC REVEAL (VIEW B)

(* by others)