

* Sheathing

DuROCK Moisture Barrier

DuROCK Moisture Barrier/Adhesive

DuROCK PUCCS, EPS Insulation Board

10mm (GDDC) Geometrically Defined Drainage
Cavity at the back of insulation board

DuROCK 5oz. Reinforcing Mesh
embedded in Prep Coat

DuROCK Base Primer (optional)

DuROCK Finish Coat



CCMC No. 12969-R

PUCCS is continuous insulation cladding that includes a Geometrically Defined Drainage Cavity (GDDC) that is 10 mm deep and 37% open. PUCCS has been evaluated by CCMC for compliance with the National Building Code of Canada, PUCCS complies with the CAN/ULC-S716.1 EIFS Materials and Systems test standard, and PUCCS satisfies the fire protection test requirements in National Building Code of Canada Article 3.1.5.5 when tested in accordance with CAN/ULC-S134 and in Article 3.2.3.8 when tested in accordance with CAN/ULC-S101

(* by others)

DuROCK SYSTEM:

PUCCS-CHRC

(FOR COMMERCIAL AND HIGH RISE CONSTRUCTION)

DRAWING TITLE:

STANDARD SECTION DETAIL

This detail complements the corresponding system specification and illustrates the system configuration for the depicted construction. Visit www.durock.com for the latest revisions and contact DuROCK for project-specific details to suit conditions other than those depicted. DuROCK assumes no liability for the architecture, design, engineering, or workmanship of any project.

DuROCK

Alfacing International Limited

101-B ROYTEC ROAD
WOODBRIIDGE, ONTARIO
TEL : (905) 856-0133, FAX : (905) 856-9654
www.durock.com

ARCHITECTURAL FINISHING SYSTEMS

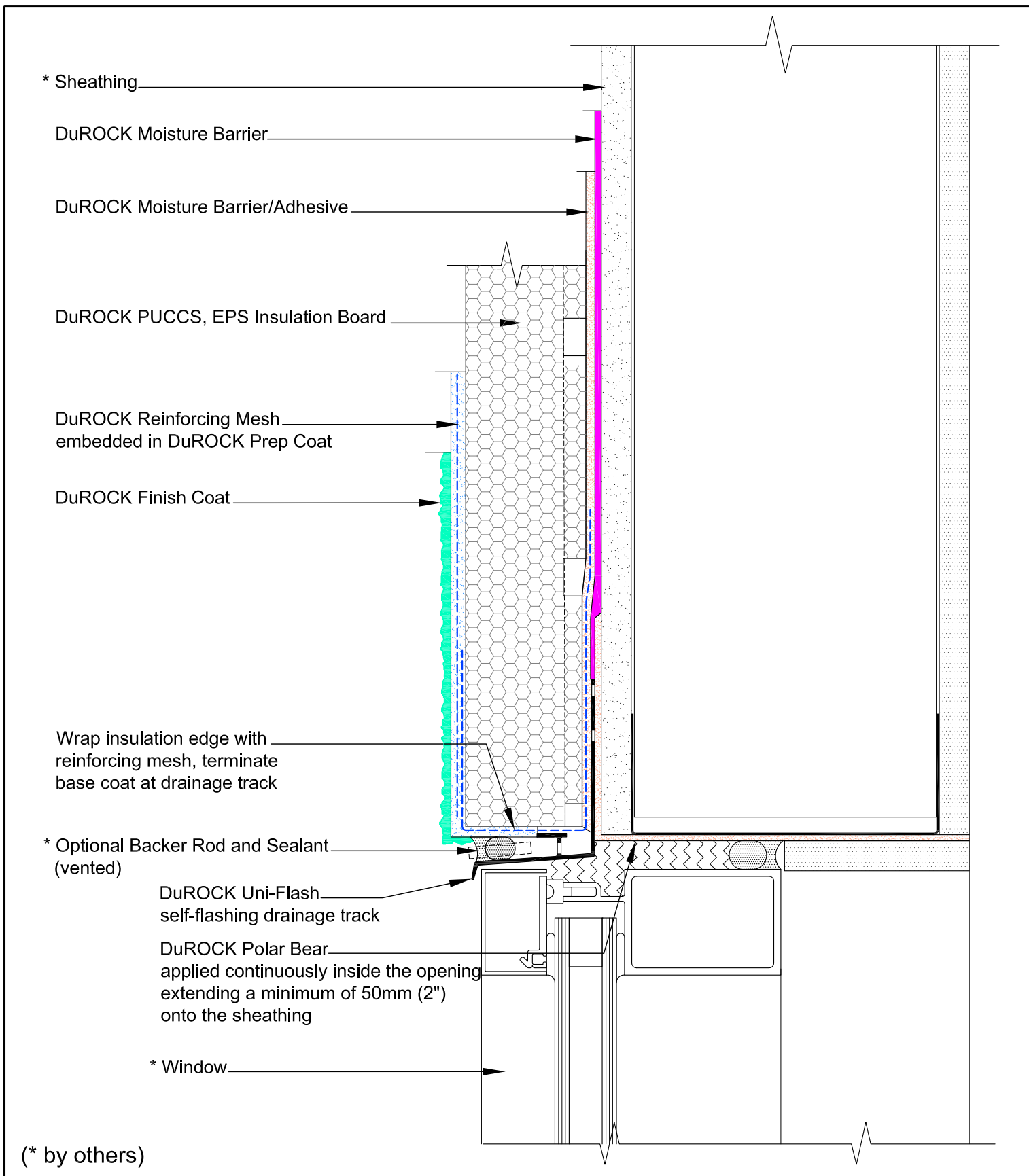
LAST REVISE: JAN 2019

ISSUED: MAR 2007

DRAWN: RIZ

SCALE: NTS

PUCCS-CHRC
D-01



DuROCK SYSTEM:

PUCCS-CHRC

(FOR COMMERCIAL AND HIGH RISE CONSTRUCTION)

DRAWING TITLE:

WINDOW HEADER WITH DuROCK PVC UNI-FLASH

This detail complements the corresponding system specification and illustrates the system configuration for the depicted construction. Visit www.durock.com for the latest revisions and contact DuROCK for project-specific details to suit conditions other than those depicted. DuROCK assumes no liability for the architecture, design, engineering, or workmanship of any project.

DuROCK

Alfacing International Limited

101-B ROYTEC ROAD
WOODBIDGE, ONTARIO
TEL : (905) 856-0133, FAX : (905) 856-9654
www.durock.com

ARCHITECTURAL FINISHING SYSTEMS

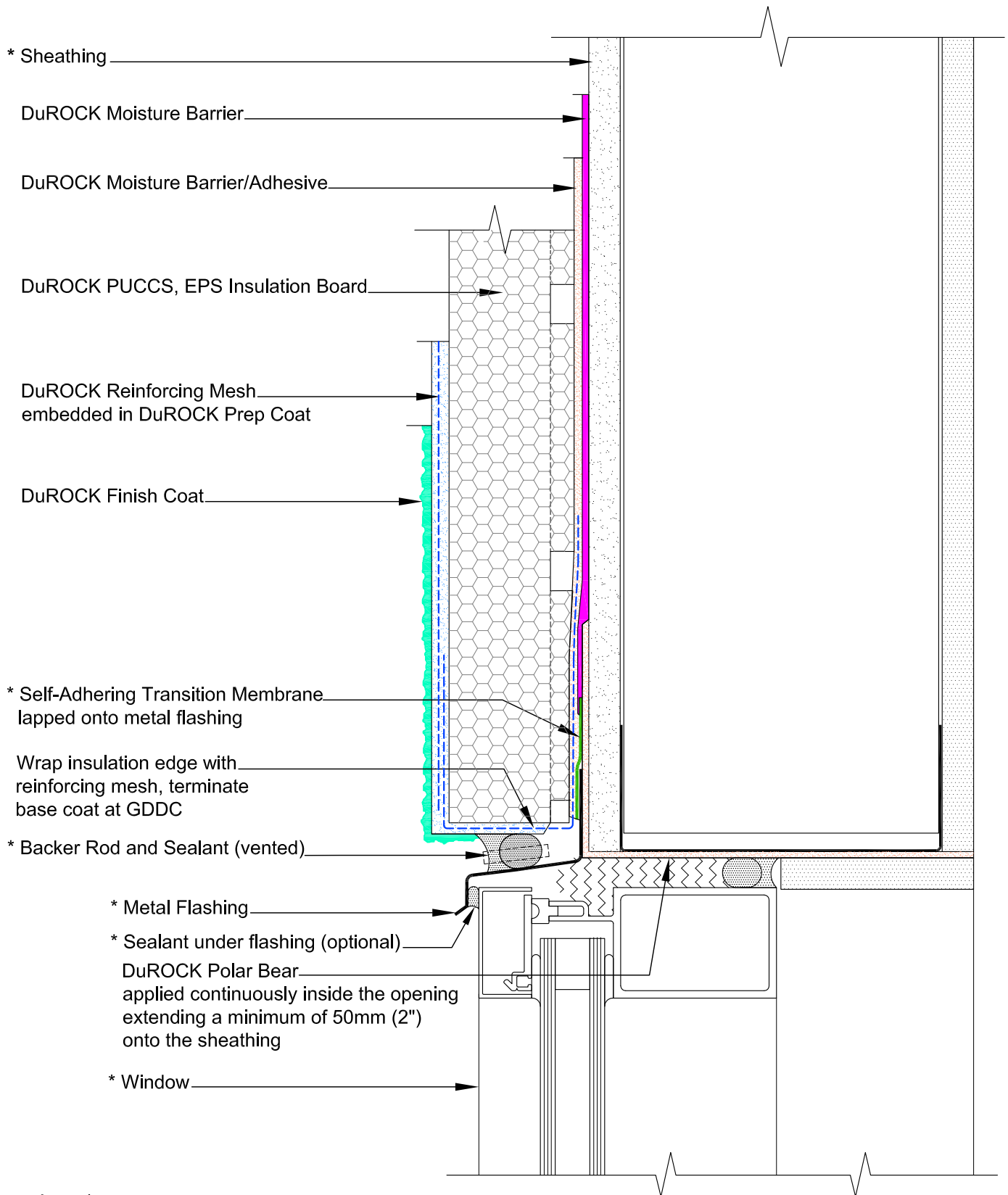
LAST REVISION: MAR 2020

ISSUED: MAR 2007

DRAWN: RIZ

SCALE: NTS

PUCCS-CHRC
D-01



(* by others)

DuROCK SYSTEM:

PUCCS-CHRC

(FOR COMMERCIAL AND HIGH RISE CONSTRUCTION)

DRAWING TITLE:

WINDOW HEADER WITH METAL FLASHING

This detail complements the corresponding system specification and illustrates the system configuration for the depicted construction. Visit www.durock.com for the latest revisions and contact DuROCK for project-specific details to suit conditions other than those depicted. DuROCK assumes no liability for the architecture, design, engineering, or workmanship of any project.



Alfacing International Limited

101-B ROYTEC ROAD
WOODBRIDGE, ONTARIO
TEL : (905) 856-0133, FAX : (905) 856-9654
www.durock.com

ARCHITECTURAL FINISHING SYSTEMS

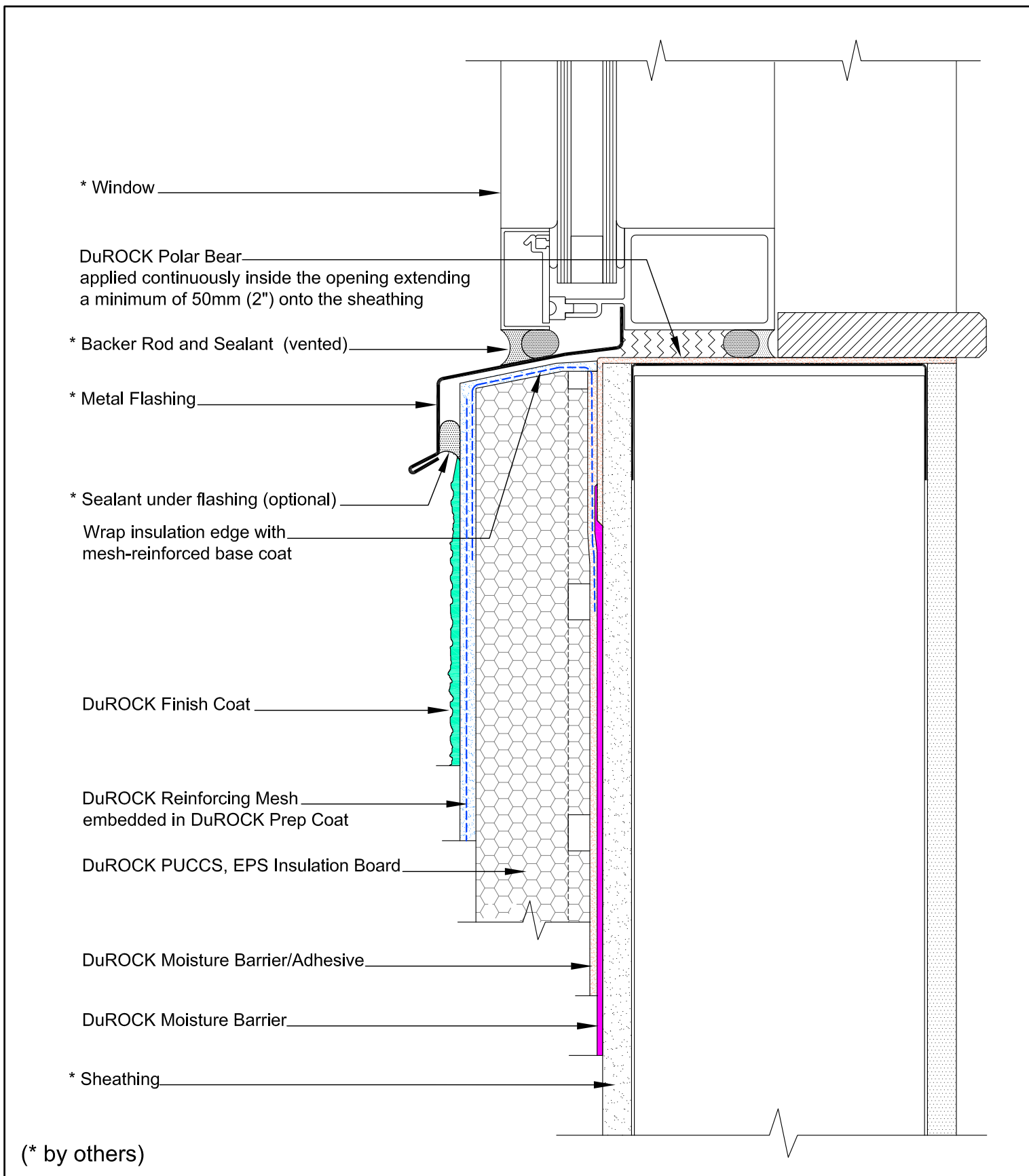
LAST REVISE: MAR 2020

ISSUED: MAR 2007

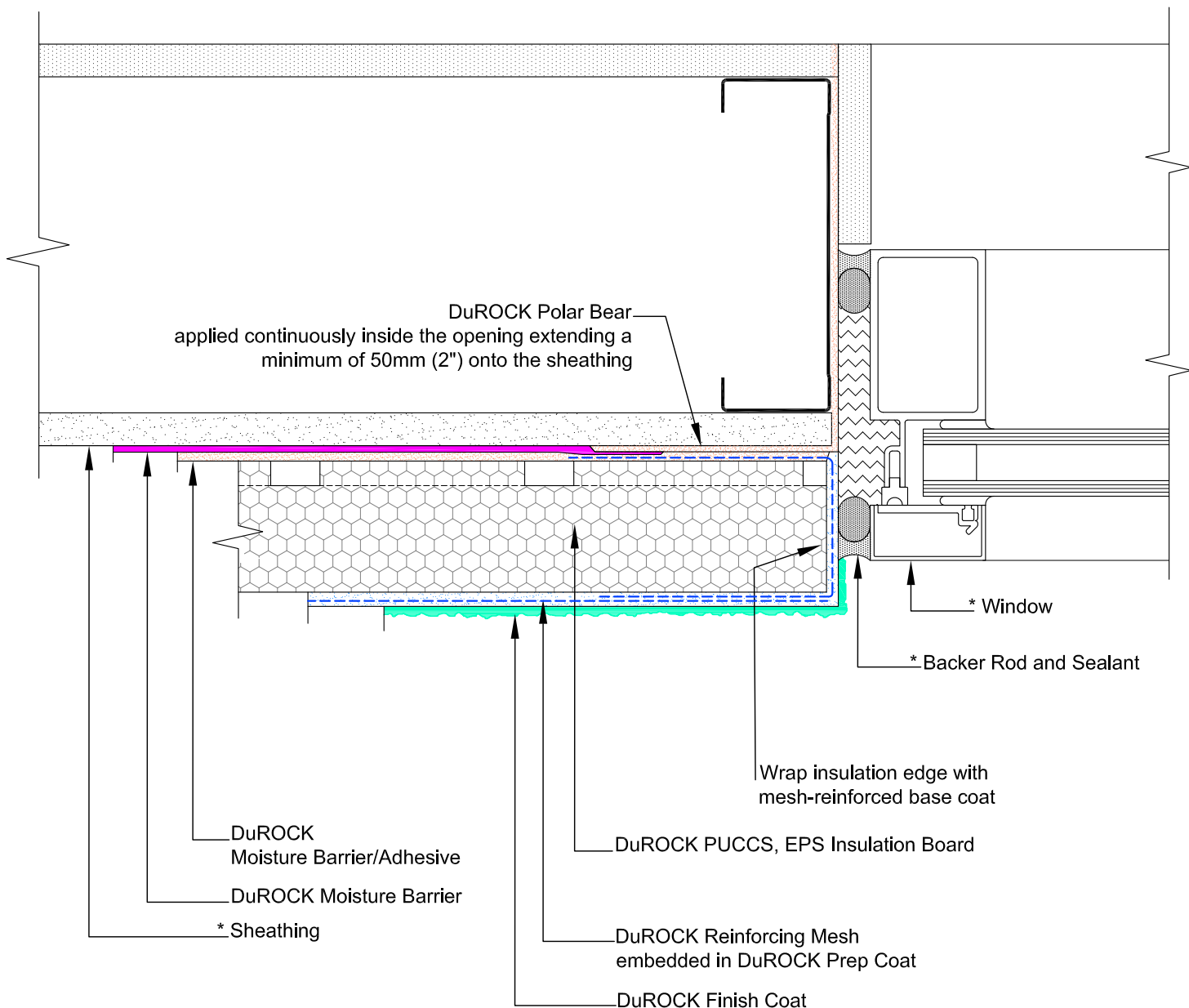
DRAWN: RIZ

SCALE: NTS

PUCCS-CHRC
D-02



<p>DuROCK SYSTEM:</p> <p>PUCCS-CHRC</p> <p>(FOR COMMERCIAL AND HIGH RISE CONSTRUCTION)</p>	<p>This detail complements the corresponding system specification and illustrates the system configuration for the depicted construction. Visit www.durock.com for the latest revisions and contact DuROCK for project-specific details to suit conditions other than those depicted. DuROCK assumes no liability for the architecture, design, engineering, or workmanship of any project.</p>	<p>DuROCK</p> <p>Alfacing International Limited</p> <p>101-B ROYTEC ROAD WOODBIDGE, ONTARIO TEL : (905) 856-0133, FAX : (905) 856-9654 www.durock.com</p> <p>ARCHITECTURAL FINISHING SYSTEMS</p>	<p>LAST REVISION: JAN 2019</p> <p>ISSUED: MAR 2007</p> <p>DRAWN: RIZ</p> <p>SCALE: NTS</p> <p>PUCCS-CHRC</p> <p>D-03</p>
<p>DRAWING TITLE:</p> <p>WINDOW SILL DETAIL</p>			



(* by others)

DuROCK SYSTEM:

Puccs-CHRC

(FOR COMMERCIAL AND HIGH RISE CONSTRUCTION)

DRAWING TITLE:

WINDOW JAMB DETAIL

This detail complements the corresponding system specification and illustrates the system configuration for the depicted construction. Visit www.durock.com for the latest revisions and contact DuROCK for project-specific details to suit conditions other than those depicted. DuROCK assumes no liability for the architecture, design, engineering, or workmanship of any project.

DuROCK

Alfacing International Limited

101-B ROYTEC ROAD
WOODBRIDGE, ONTARIO
TEL : (905) 856-0133, FAX : (905) 856-9654
www.durock.com

ARCHITECTURAL FINISHING SYSTEMS

LAST REVISE: MAR 2020

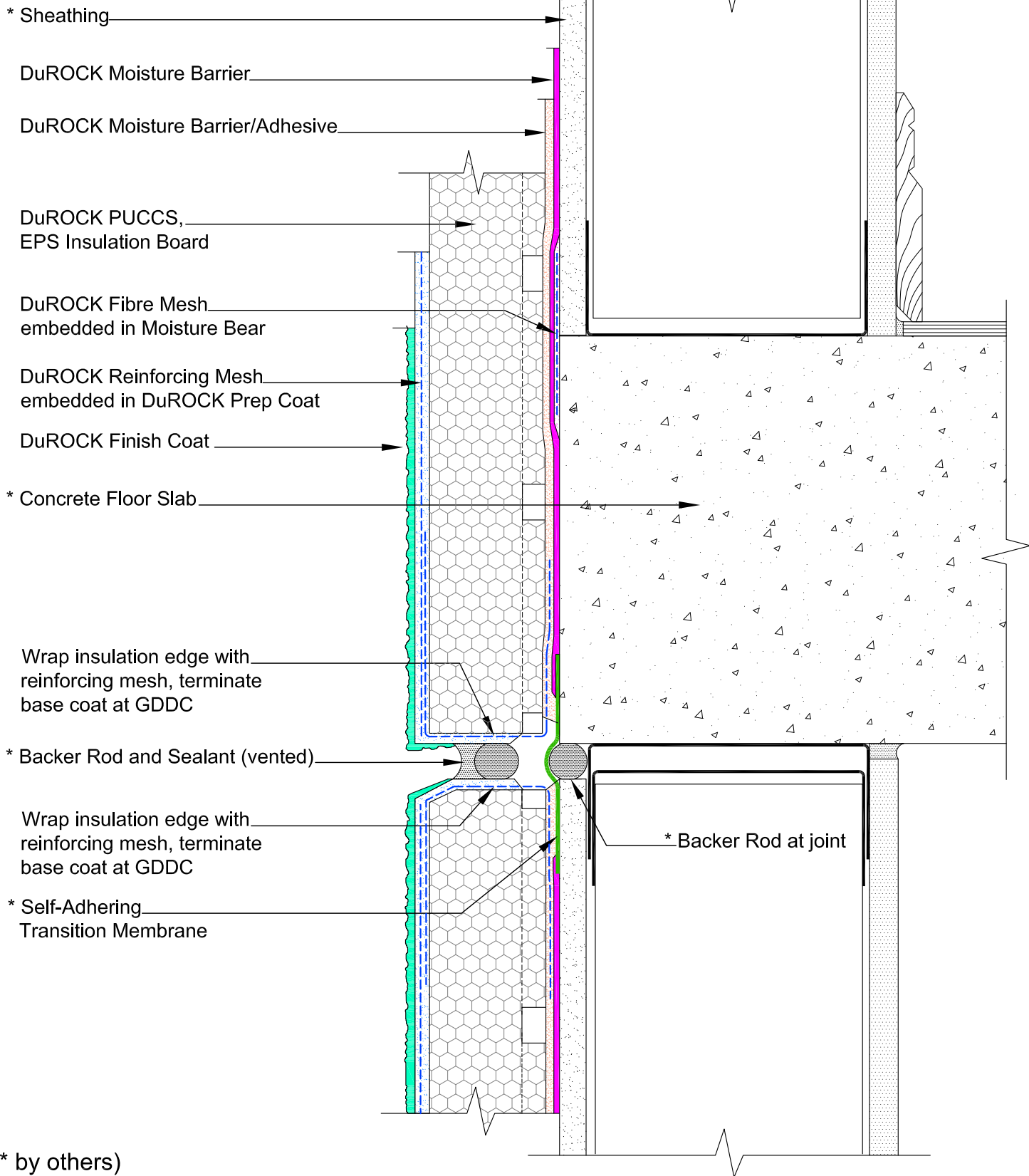
ISSUED: MAR 2007

DRAWN: RIZ

SCALE: NTS

Puccs-CHRC

D-04



DuROCK SYSTEM:

Puccs-CHRC

(FOR COMMERCIAL AND HIGH RISE CONSTRUCTION)

DRAWING TITLE:

HORIZONTAL EXPANSION JOINT (SEALED OPTION)

This detail complements the corresponding system specification and illustrates the system configuration for the depicted construction. Visit www.durock.com for the latest revisions and contact DuROCK for project-specific details to suit conditions other than those depicted. DuROCK assumes no liability for the architecture, design, engineering, or workmanship of any project.

DuROCK

Alfacing International Limited

101-B ROYTEC ROAD
WOODBRIDGE, ONTARIO
TEL : (905) 856-0133, FAX : (905) 856-9654
www.durock.com

ARCHITECTURAL FINISHING SYSTEMS

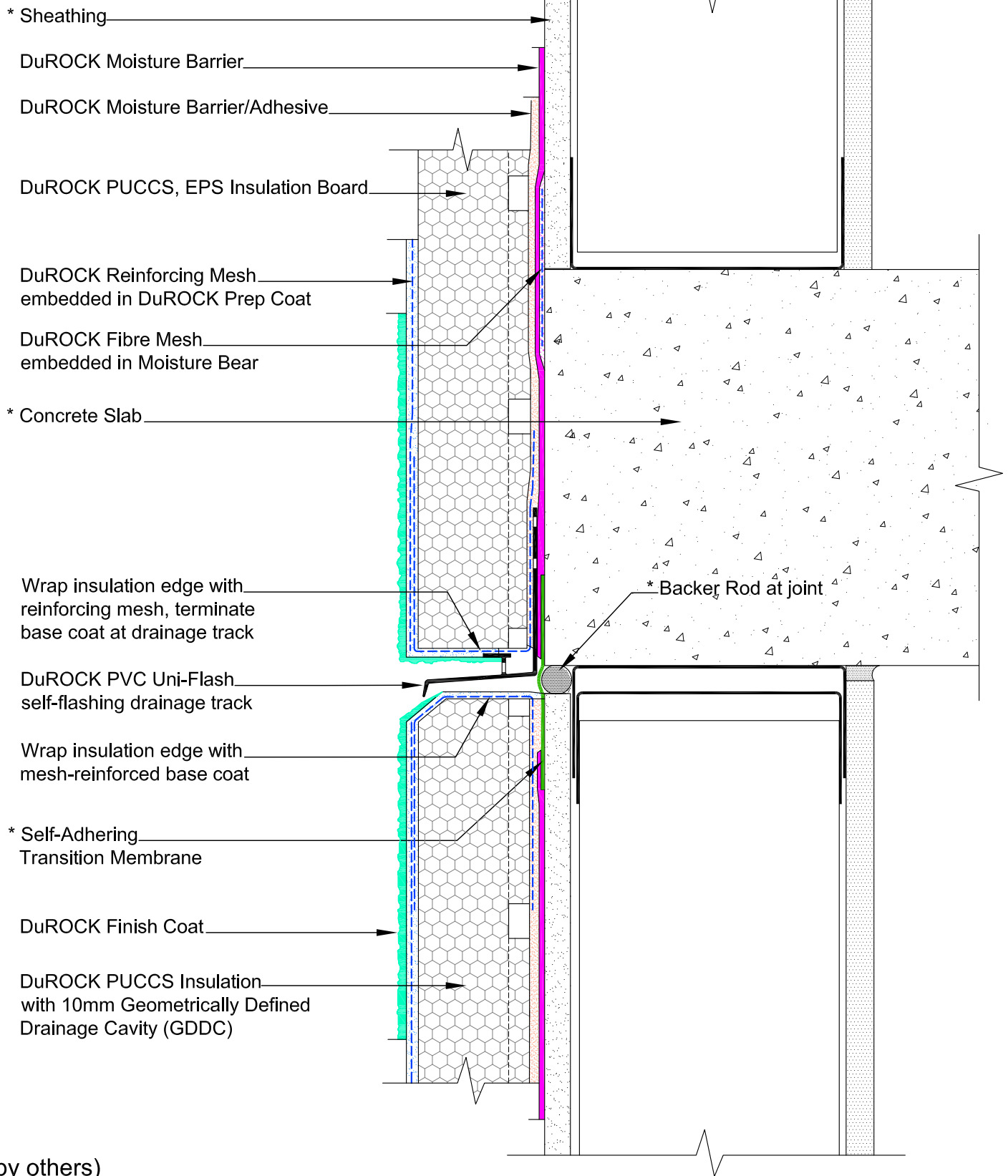
LAST REVISE: JAN 2019

ISSUED: MAR 2007

DRAWN: RIZ

SCALE: NTS

Puccs-CHRC
D-05



DuROCK SYSTEM:

Puccs-CHRC

(FOR COMMERCIAL AND HIGH RISE CONSTRUCTION)

DRAWING TITLE:

HORIZONTAL EXPANSION JOINT (DRAINED OPTION)

This detail complements the corresponding system specification and illustrates the system configuration for the depicted construction. Visit www.durock.com for the latest revisions and contact DuROCK for project-specific details to suit conditions other than those depicted. DuROCK assumes no liability for the architecture, design, engineering, or workmanship of any project.

DuROCK

Alfacing International Limited

101-B ROYTEC ROAD
WOODBRIDGE, ONTARIO
TEL : (905) 856-0133, FAX : (905) 856-9654
www.durock.com

ARCHITECTURAL FINISHING SYSTEMS

LAST REVISE: JAN 2019

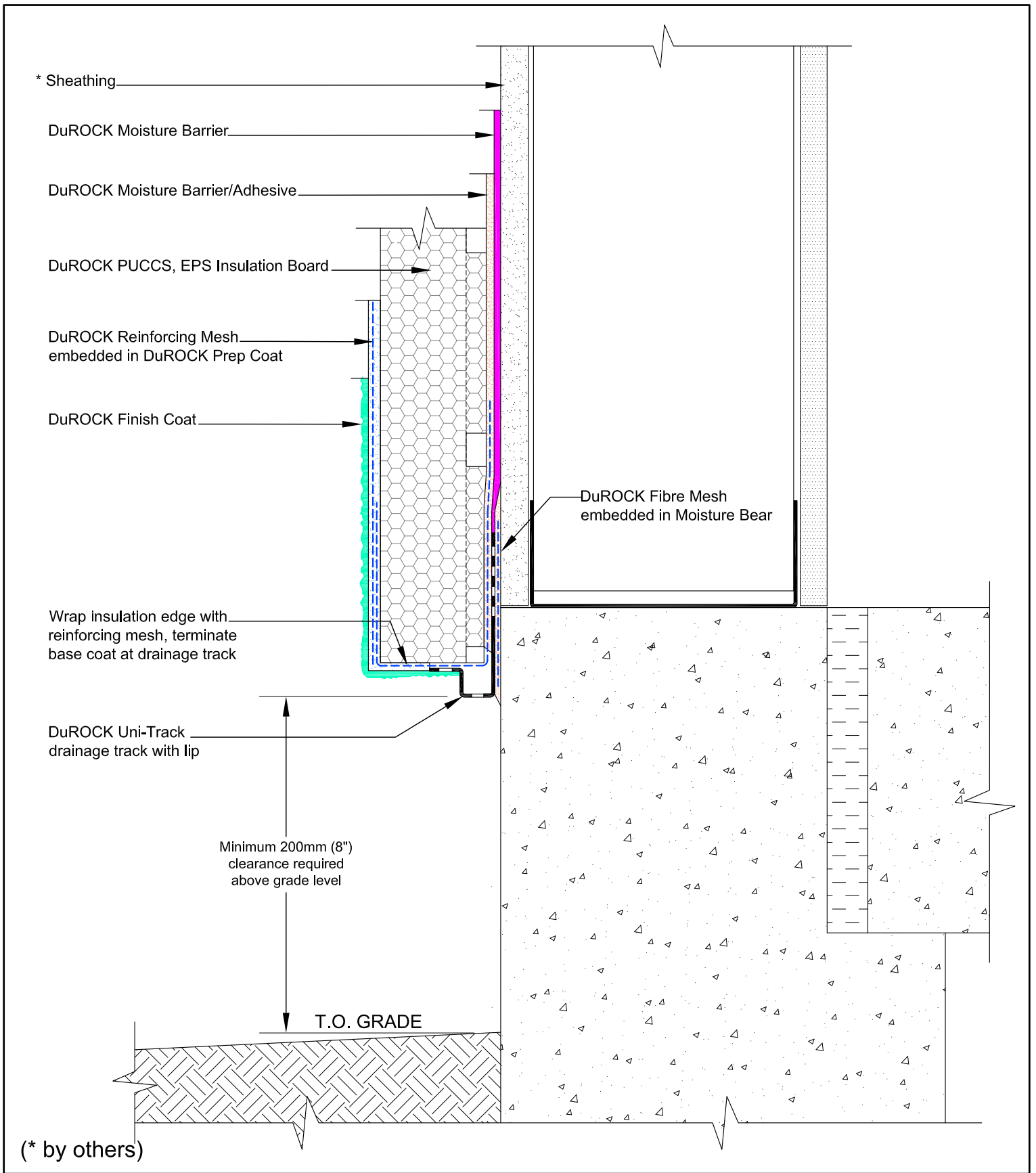
ISSUED: MAR 2007

DRAWN: RIZ

SCALE: NTS

Puccs-CHRC

D-06



DuROCK SYSTEM:

Puccs-CHRC

(FOR COMMERCIAL AND HIGH RISE CONSTRUCTION)

DRAWING TITLE:

TERMINATION AT GRADE

This detail complements the corresponding system specification and illustrates the system configuration for the depicted construction. Visit www.durock.com for the latest revisions and contact DuROCK for project-specific details to suit conditions other than those depicted. DuROCK assumes no liability for the architecture, design, engineering, or workmanship of any project.

DuROCK

Alfacing International Limited

101-B ROYTEC ROAD
WOODBRIDGE, ONTARIO
TEL : (905) 856-0133, FAX : (905) 856-9654
www.durock.com

ARCHITECTURAL FINISHING SYSTEMS

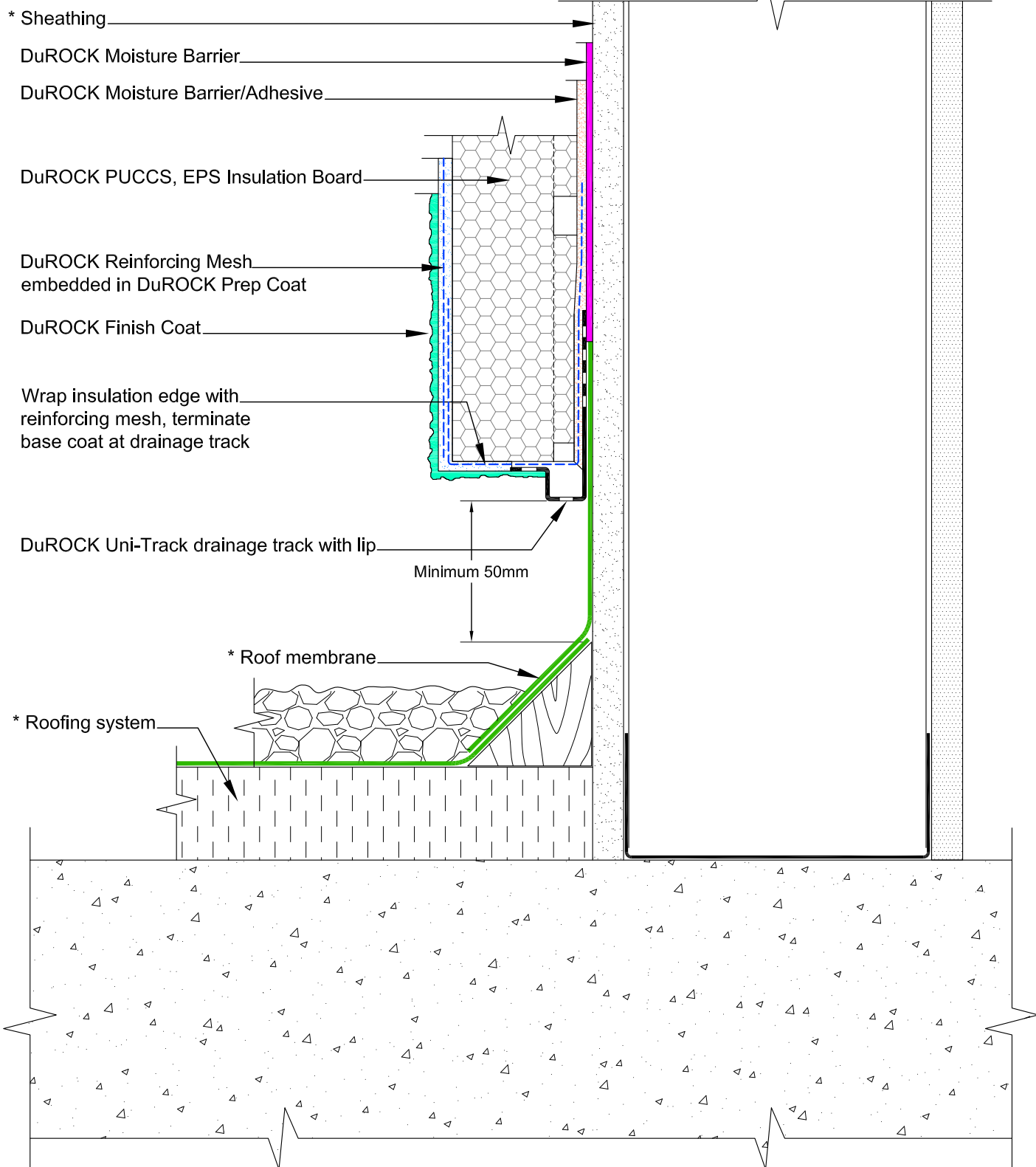
LAST REVISE: JAN 2019

ISSUED: MAR 2007

DRAWN: RIZ

SCALE: NTS

Puccs-CHRC
D-07



DuROCK SYSTEM:
PUCCS-CHRC
 (FOR COMMERCIAL AND HIGH RISE CONSTRUCTION)

DRAWING TITLE:

TERMINATION AT FLAT ROOF

This detail complements the corresponding system specification and illustrates the system configuration for the depicted construction. Visit www.durock.com for the latest revisions and contact DuROCK for project-specific details to suit conditions other than those depicted. DuROCK assumes no liability for the architecture, design, engineering, or workmanship of any project.

DuROCK
 Alfacing International Limited
 101-B ROYTEC ROAD
 WOODBRIDGE, ONTARIO
 TEL : (905) 856-0133, FAX : (905) 856-9654
www.durock.com
 ARCHITECTURAL FINISHING SYSTEMS

LAST REVISE: JAN 2019

ISSUED: MAR 2007

DRAWN: RIZ

SCALE: NTS

PUCCS-CHRC
D-08

* Sheathing

DuROCK Moisture Barrier

DuROCK Moisture Barrier/Adhesive

DuROCK PUCCS, EPS Insulation Board

DuROCK Reinforcing Mesh
embedded in DuROCK Prep Coat

DuROCK Fibre Mesh
embedded in Moisture Bear

DuROCK Finish Coat

Wrap insulation edge with
reinforcing mesh, terminate
base coat at drainage track

DuROCK Uni-Track, drainage track
with lip

Minimum 50mm (2")
clearance required
above floor level

* Balcony floor

* Backer Rod at joint

* Backer Rod and Sealant

Wrap insulation edge with
mesh-reinforced base coat

* Self-Adhering
Transition Membrane at joint

(* by others)

DuROCK SYSTEM:

PUCCS-CHRC

(FOR COMMERCIAL AND HIGH RISE CONSTRUCTION)

DRAWING TITLE:

TERMINATION AT BALCONY SLAB (ABOVE AND BELOW THE SLAB)

This detail complements the corresponding system specification and illustrates the system configuration for the depicted construction. Visit www.durock.com for the latest revisions and contact DuROCK for project-specific details to suit conditions other than those depicted. DuROCK assumes no liability for the architecture, design, engineering, or workmanship of any project.

DuROCK

Alfacing International Limited

101-B ROYTEC ROAD
WOODBRIDGE, ONTARIO
TEL : (905) 856-0133, FAX : (905) 856-9654
www.durock.com

ARCHITECTURAL FINISHING SYSTEMS

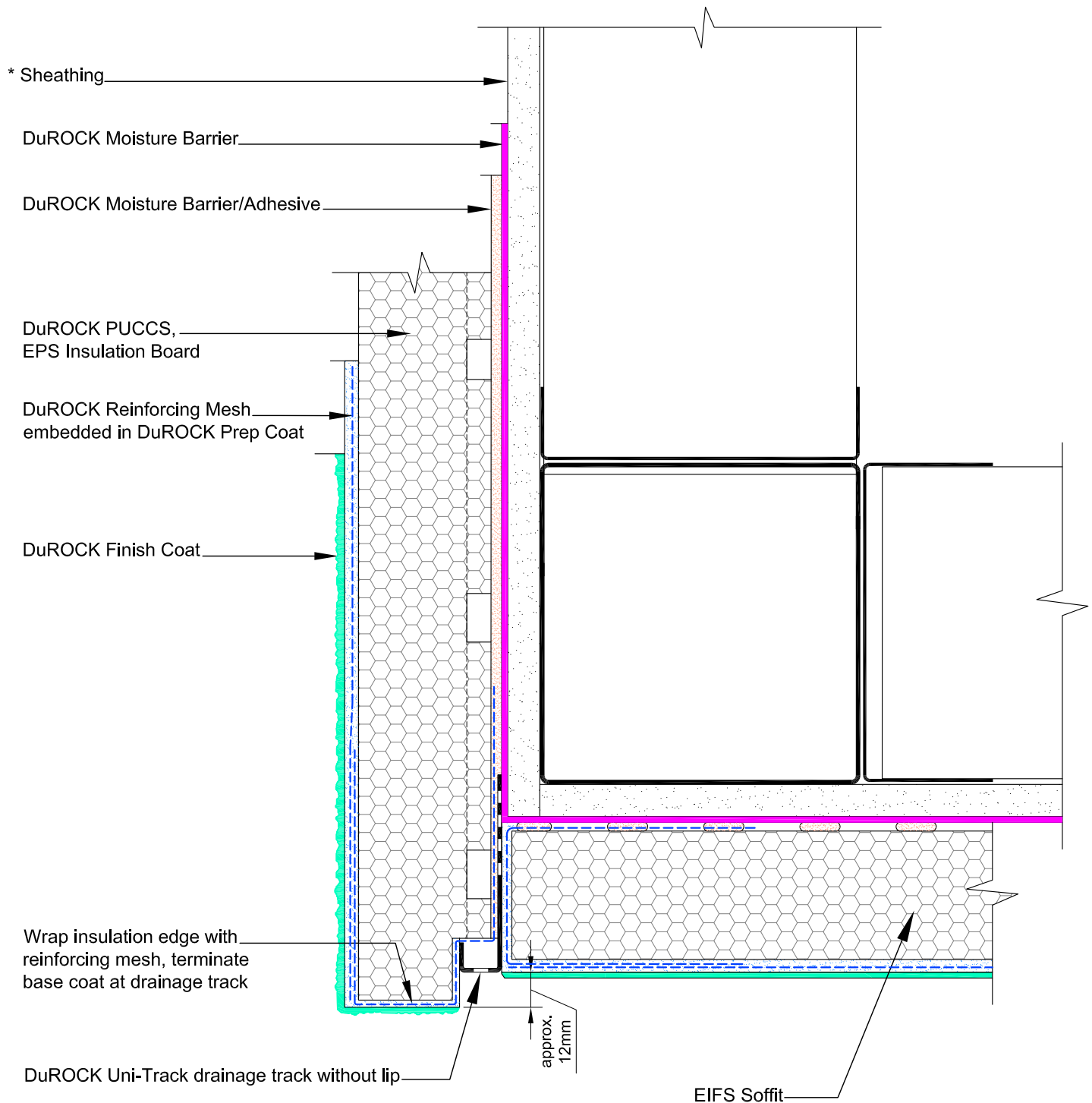
LAST REVISE: JAN 2019

ISSUED: MAR 2007

DRAWN: RIZ

SCALE: NTS

PUCCS-CHRC
D-09



(* by others)

DuROCK SYSTEM:
PUCCS-CHRC
 (FOR COMMERCIAL AND HIGH RISE CONSTRUCTION)

DRAWING TITLE:

TERMINATION AT EIFS SOFFIT

This detail complements the corresponding system specification and illustrates the system configuration for the depicted construction. Visit www.durock.com for the latest revisions and contact DuROCK for project-specific details to suit conditions other than those depicted. DuROCK assumes no liability for the architecture, design, engineering, or workmanship of any project.

DuROCK
 Alfacing International Limited
 101-B ROYTEC ROAD
 WOODBRIDGE, ONTARIO
 TEL : (905) 856-0133, FAX : (905) 856-9654
www.durock.com
 ARCHITECTURAL FINISHING SYSTEMS

LAST REVISE: JAN 2019
 ISSUED: MAR 2007
 DRAWN: RIZ
 SCALE: NTS

PUCCS-CHRC
D-10

* Self-Adhering
Transition Membrane

* Metal Cap Flashing

Wrap insulation edge with
mesh-reinforced base coat

* Sealant under flashing drip edge
(optional)

DuROCK Finish Coat

DuROCK Reinforcing Mesh
embedded in DuROCK Prep Coat

DuROCK PUCCS,
EPS Insulation Board

DuROCK Moisture Barrier/Adhesive

DuROCK Moisture Barrier

* Sheathing

(* by others)

DuROCK SYSTEM:

PUCCS-CHRC

(FOR COMMERCIAL AND HIGH RISE CONSTRUCTION)

DRAWING TITLE:

TERMINATION AT ROOF TOP PARAPET

This detail complements the corresponding system specification and illustrates the system configuration for the depicted construction. Visit www.durock.com for the latest revisions and contact DuROCK for project-specific details to suit conditions other than those depicted. DuROCK assumes no liability for the architecture, design, engineering, or workmanship of any project.

DuROCK

Alfacing International Limited

101-B ROYTEC ROAD
WOODBIDGE, ONTARIO
TEL : (905) 856-0133, FAX : (905) 856-9654
www.durock.com

ARCHITECTURAL FINISHING SYSTEMS

LAST REVISE: JAN 2019

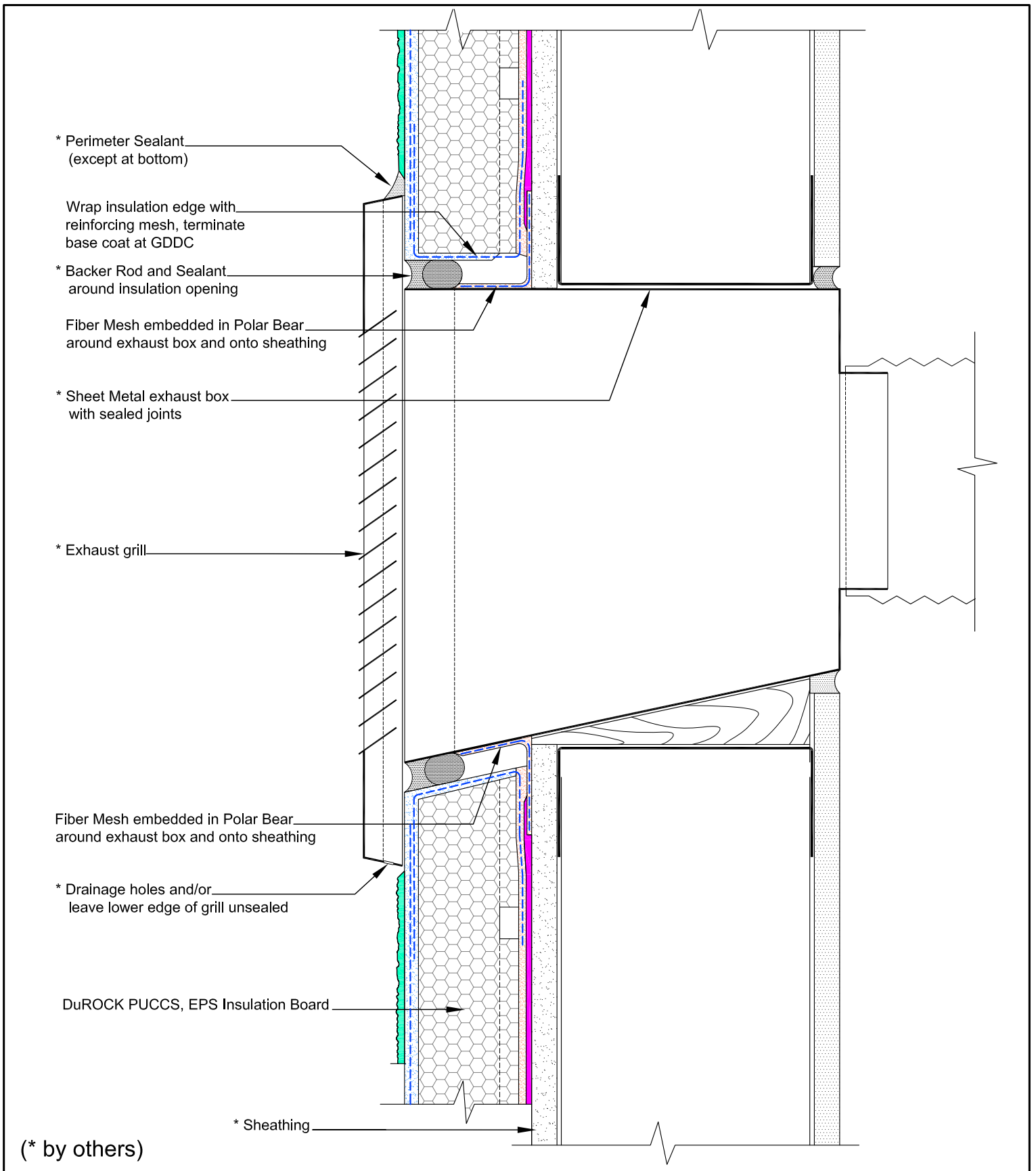
ISSUED: MAR 2007

DRAWN: RIZ

SCALE: NTS

PUCCS-CHRC

D-11



DuROCK SYSTEM:

PUCCS-CHRC

(FOR COMMERCIAL AND HIGH RISE CONSTRUCTION)

DRAWING TITLE:

WALL EXHAUST PENETRATION

This detail complements the corresponding system specification and illustrates the system configuration for the depicted construction. Visit www.durock.com for the latest revisions and contact DuROCK for project-specific details to suit conditions other than those depicted. DuROCK assumes no liability for the architecture, design, engineering, or workmanship of any project.



Alfacing International Limited

101-B ROYTEC ROAD
WOODBRIDGE, ONTARIO
TEL : (905) 856-0133, FAX : (905) 856-9654
www.durock.com

ARCHITECTURAL FINISHING SYSTEMS

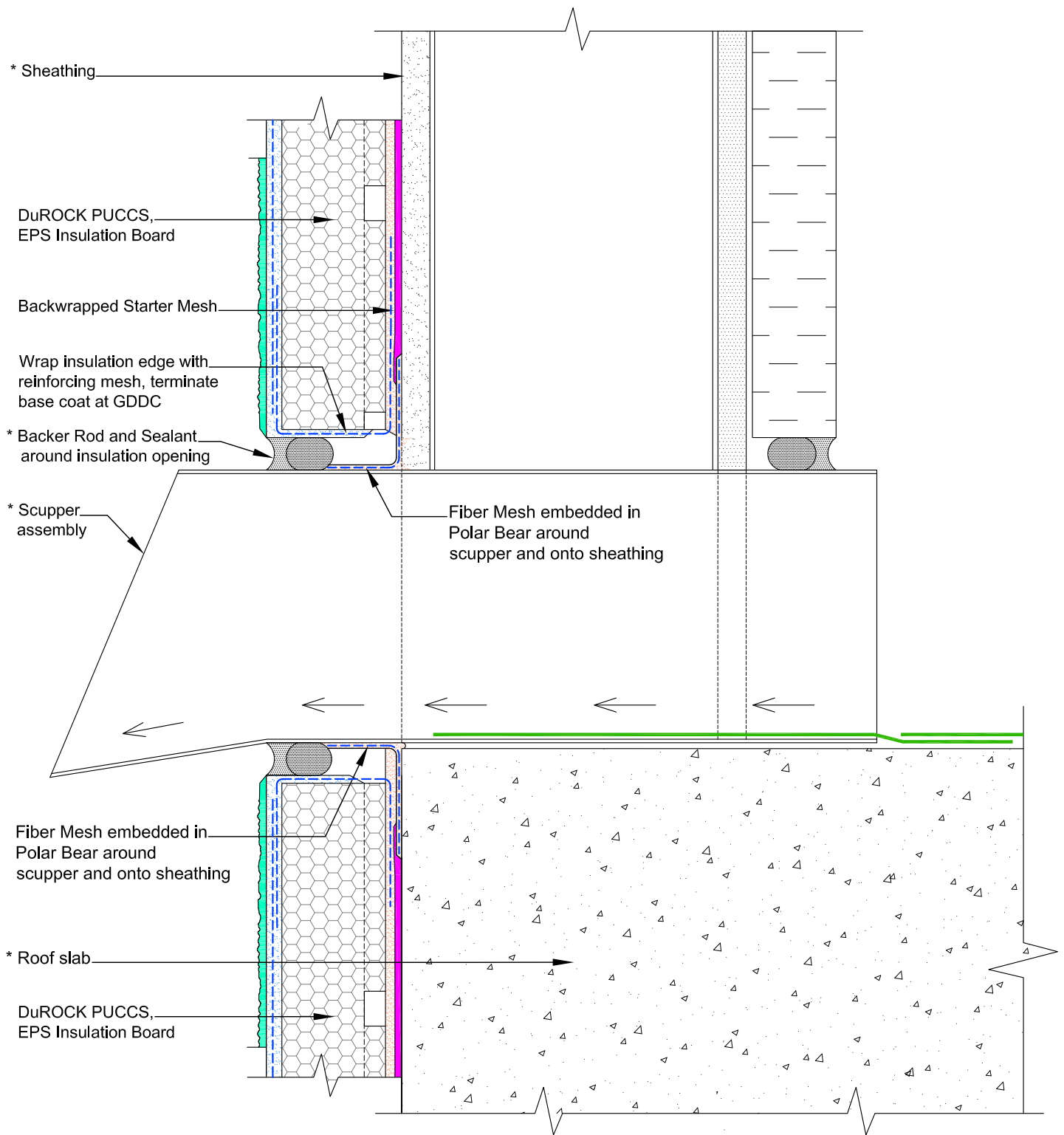
LAST REVISE: APR 2020

ISSUED: MAR 2007

DRAWN: RIZ

SCALE: NTS

PUCCS-CHRC
D-12



(* by others)

DuROCK SYSTEM:
PUCCS-CHRC
(FOR COMMERCIAL AND HIGH RISE CONSTRUCTION)

DRAWING TITLE:

SCUPPER PENETRATION

This detail complements the corresponding system specification and illustrates the system configuration for the depicted construction. Visit www.durock.com for the latest revisions and contact DuROCK for project-specific details to suit conditions other than those depicted. DuROCK assumes no liability for the architecture, design, engineering, or workmanship of any project.

DuROCK
Alfacing International Limited
101-B ROYTEC ROAD
WOODBIDGE, ONTARIO
TEL : (905) 856-0133, FAX : (905) 856-9654
www.durock.com
ARCHITECTURAL FINISHING SYSTEMS

LAST REVISE: APR 2020
ISSUED: MAR 2007
DRAWN: RIZ
SCALE: NTS
PUCCS-CHRC
D-13

* Sheathing

DuROCK PUCCS,
EPS Insulation Board

DuROCK Reinforcing Mesh
embedded in DuROCK Prep Coat

DuROCK Finish Coat

Minimum 15mm

* Neutral Cure Sealant

* Corrosion resistant
Lag Screw and Shank

* Signage panel

(* by others)

DuROCK SYSTEM:

PUCCS-CHRC

(FOR COMMERCIAL AND HIGH RISE CONSTRUCTION)

DRAWING TITLE:

SIGNAGE ATTACHMENT

This detail complements the corresponding system specification and illustrates the system configuration for the depicted construction. Visit www.durock.com for the latest revisions and contact DuROCK for project-specific details to suit conditions other than those depicted. DuROCK assumes no liability for the architecture, design, engineering, or workmanship of any project.

DuROCK

Alfacing International Limited

101-B ROYTEC ROAD
WOODBIDGE, ONTARIO
TEL : (905) 856-0133, FAX : (905) 856-9654
www.durock.com

ARCHITECTURAL FINISHING SYSTEMS

LAST REVISE: JAN 2019

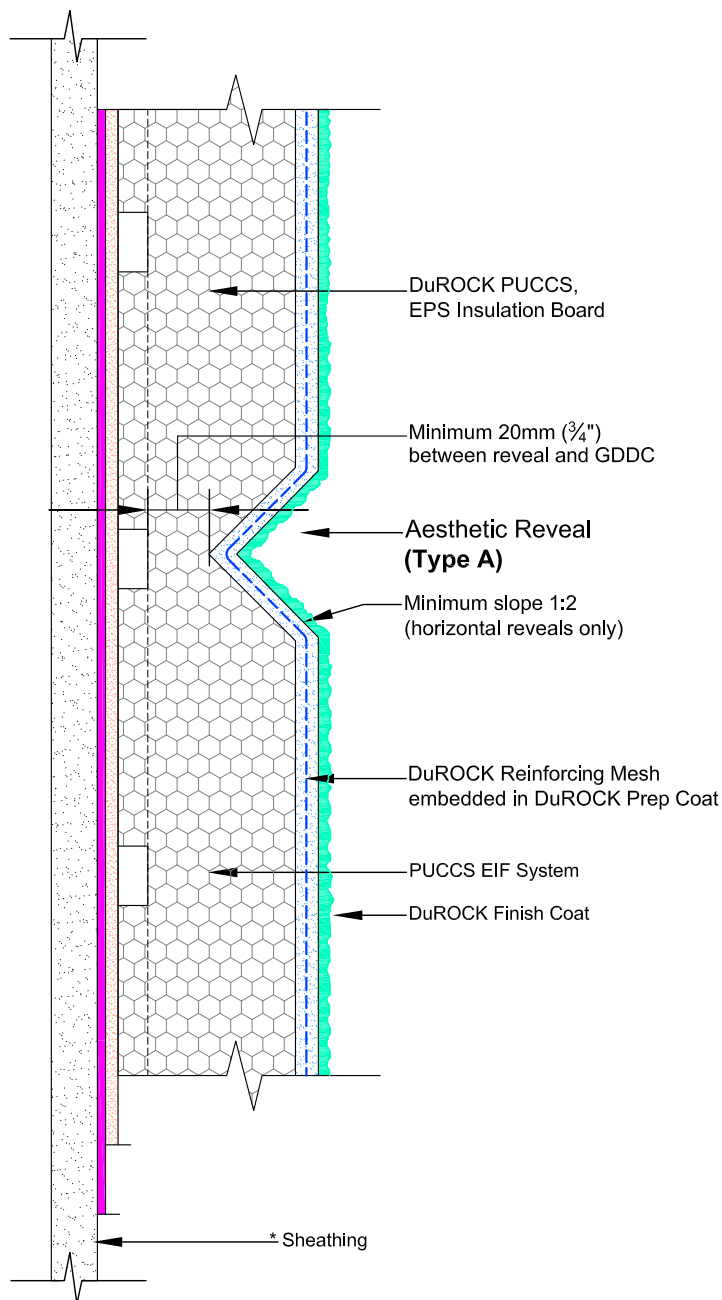
ISSUED: MAR 2007

DRAWN: RIZ

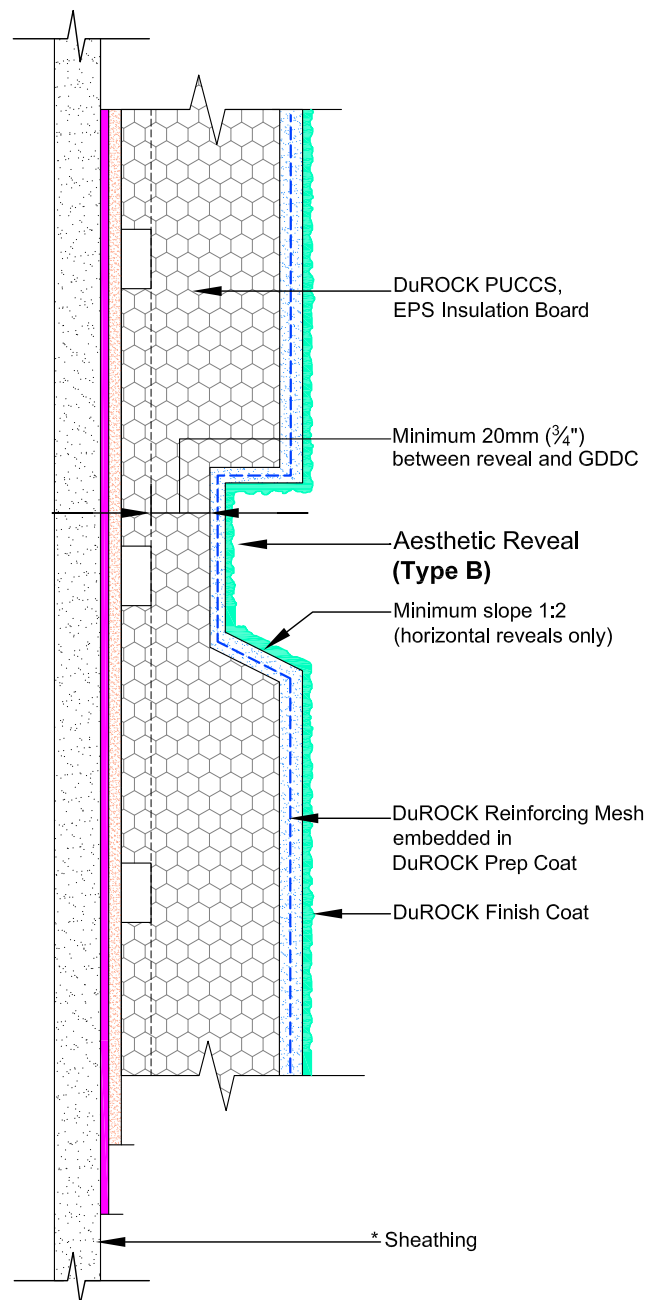
SCALE: NTS

PUCCS-CHRC

D-14



**AESTHETIC REVEAL
(TYPE A)**



**AESTHETIC REVEAL
(TYPE B)**

(* by others)

DuROCK SYSTEM:

Puccs-CHRC

(FOR COMMERCIAL AND HIGH RISE CONSTRUCTION)

DRAWING TITLE:

AESTHETIC REVEAL (VERTICAL SECTION)

This detail complements the corresponding system specification and illustrates the system configuration for the depicted construction. Visit www.durock.com for the latest revisions and contact DuROCK for project-specific details to suit conditions other than those depicted. DuROCK assumes no liability for the architecture, design, engineering, or workmanship of any project.



Alfacing International Limited

101-B ROYTEC ROAD
WOODBIDGE, ONTARIO
TEL : (905) 856-0133, FAX : (905) 856-9654
www.durock.com

ARCHITECTURAL FINISHING SYSTEMS

LAST REVISE: JAN 2019

ISSUED: MAR 2007

DRAWN: RIZ

SCALE: NTS

Puccs-CHRC
D-15