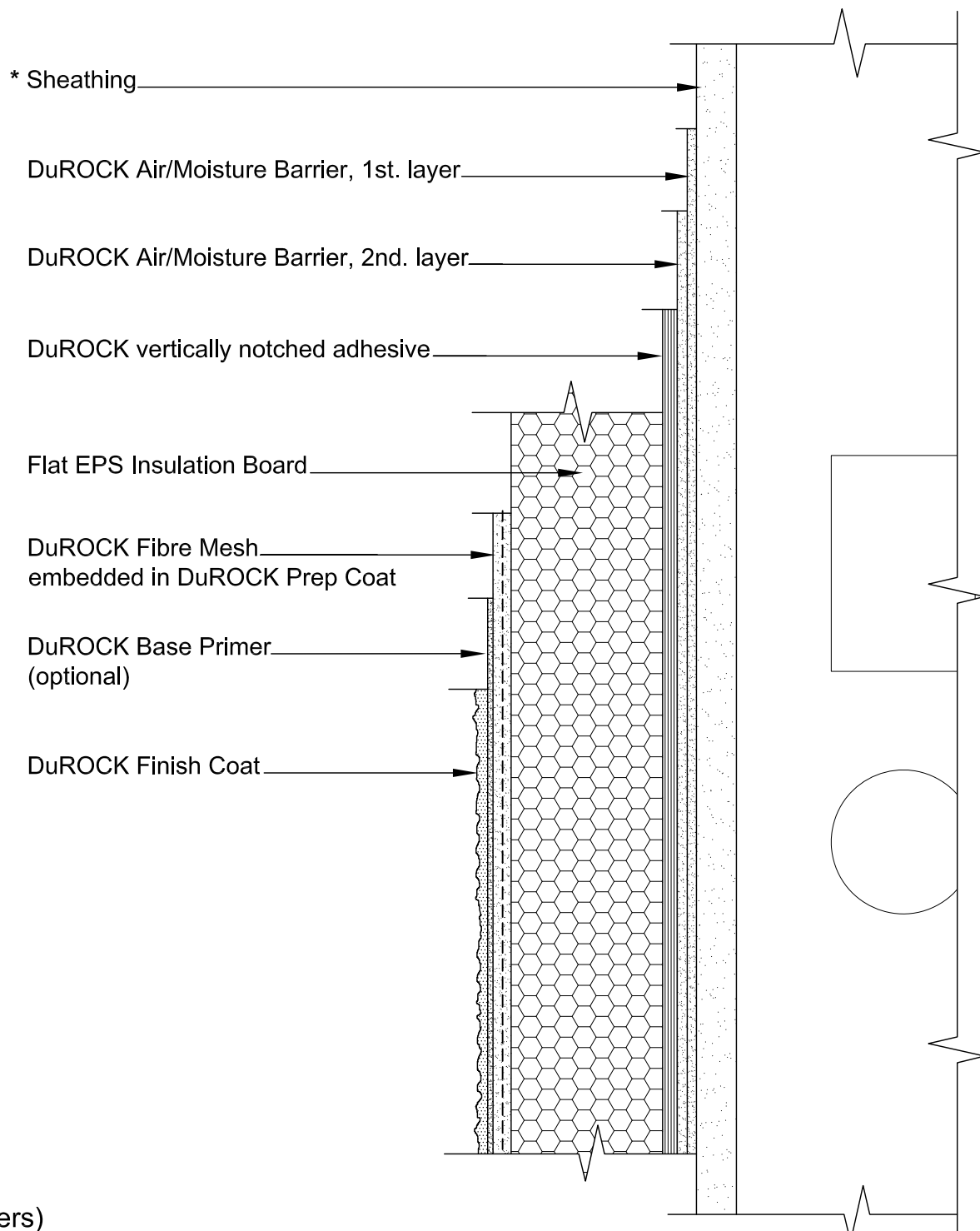


InsulROCK

Exterior Insulation Finish System

CCMC NO. 12969-R



(* by others)

DuROCK SYSTEM:

InsulROCK-CHRC

(EIFS FOR COMMERCIAL AND HIGH RISE CONSTRUCTION)

DRAWING TITLE:

WINDOW HEADER DETAIL

This detail complements the corresponding system specification and illustrates the system configuration for the depicted construction. Visit www.durock.com for the latest revisions and contact DuROCK for project-specific details to suit conditions other than those depicted. DuROCK assumes no liability for the architecture, design, engineering, or workmanship of any project.

DuROCK

Alfacing International Limited

101-B ROYTEC ROAD
WOODBIDGE, ONTARIO
TEL : (905) 856-0133, FAX : (905) 856-9654
www.durock.com

ARCHITECTURAL FINISHING SYSTEMS

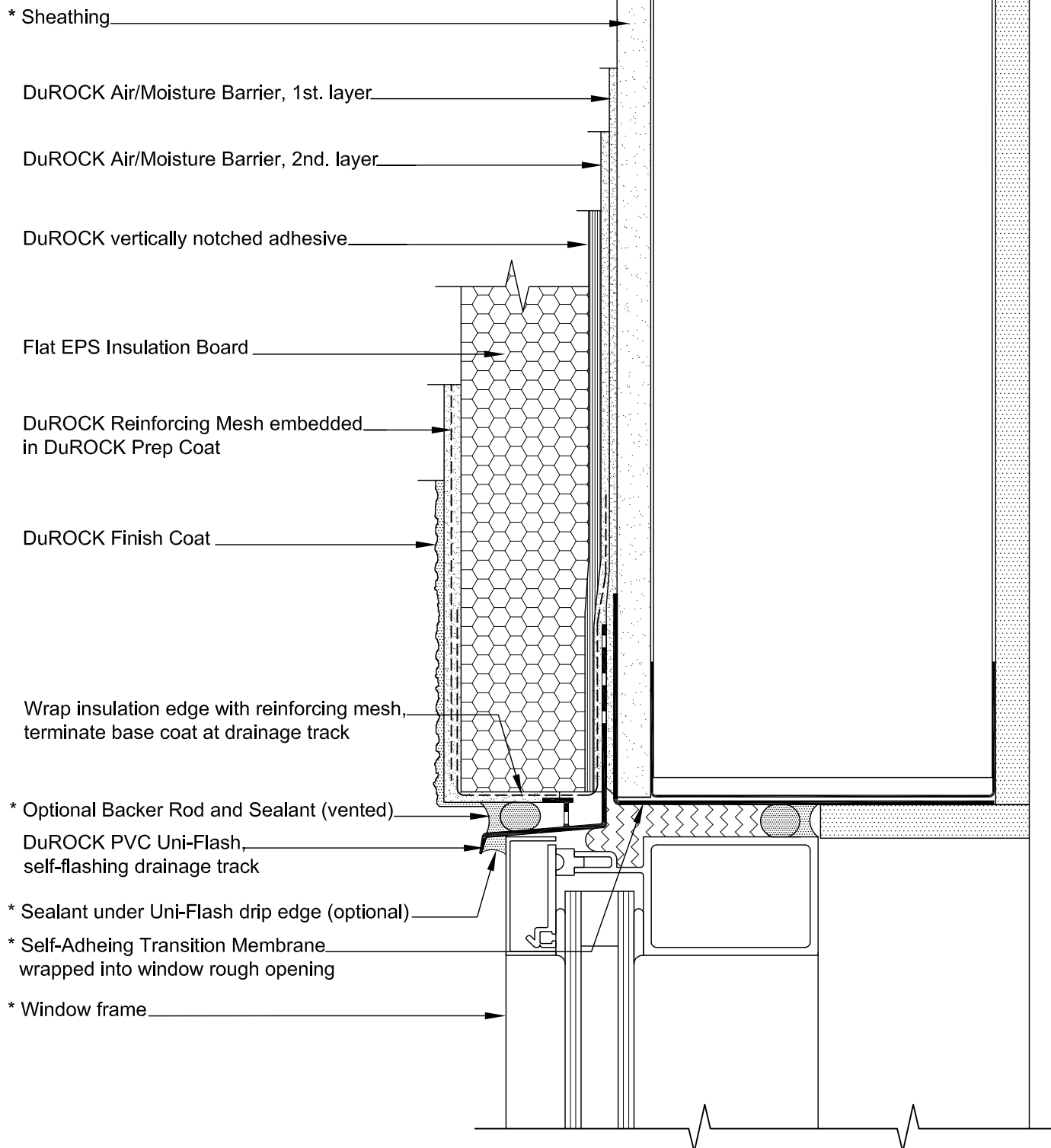
LAST REVISE: JAN 2019

ISSUED: MAR 2011

DRAWN: RIZ

SCALE: NTS

InsulROCK
COVER



(* by others)

DuROCK SYSTEM:

InsulROCK-CHRC

(EIFS FOR COMMERCIAL AND HIGH RISE CONSTRUCTION)

DRAWING TITLE:

WINDOW HEADER WITH PVC UNI-FLASH

This detail complements the corresponding system specification and illustrates the system configuration for the depicted construction. Visit www.durock.com for the latest revisions and contact DuROCK for project-specific details to suit conditions other than those depicted. DuROCK assumes no liability for the architecture, design, engineering, or workmanship of any project.

DuROCK

Alfacing International Limited

101-B ROYTEC ROAD
WOODBRIDGE, ONTARIO
TEL : (905) 856-0133, FAX : (905) 856-9654
www.durock.com

ARCHITECTURAL FINISHING SYSTEMS

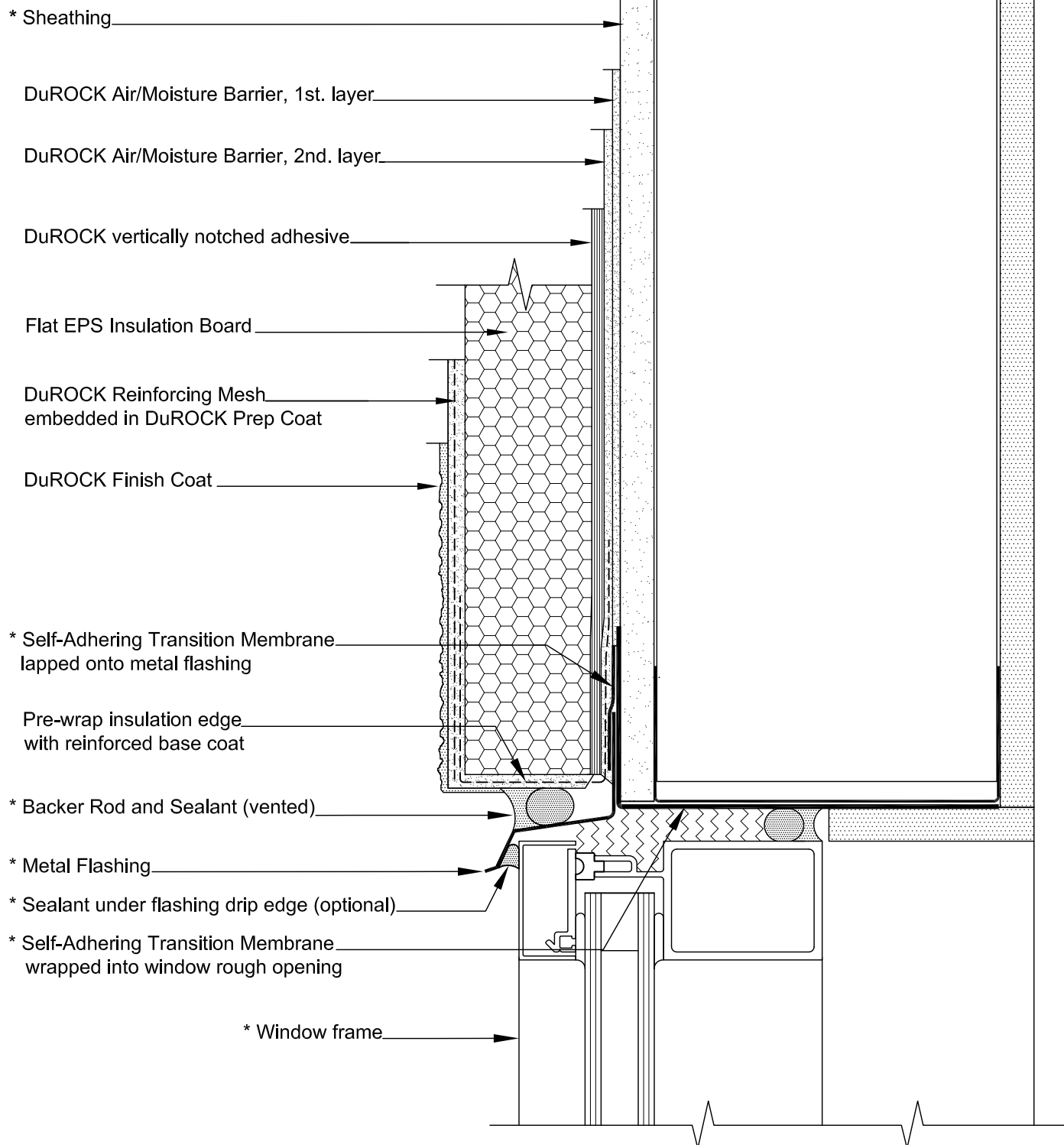
LAST REVISE: JAN 2019

ISSUED: MAR 2011

DRAWN: RIZ

SCALE: NTS

InsulROCK
D01



(* by others)

DuROCK SYSTEM:

InsulROCK-CHRC

(EIFS FOR COMMERCIAL AND HIGH RISE CONSTRUCTION)

DRAWING TITLE:

WINDOW HEADER WITH METAL FLASHING

This detail complements the corresponding system specification and illustrates the system configuration for the depicted construction. Visit www.durock.com for the latest revisions and contact DuROCK for project-specific details to suit conditions other than those depicted. DuROCK assumes no liability for the architecture, design, engineering, or workmanship of any project.

DuROCK

Alfacing International Limited

101-B ROYTEC ROAD
WOODBRIDGE, ONTARIO
TEL : (905) 856-0133, FAX : (905) 856-9654
www.durock.com

ARCHITECTURAL FINISHING SYSTEMS

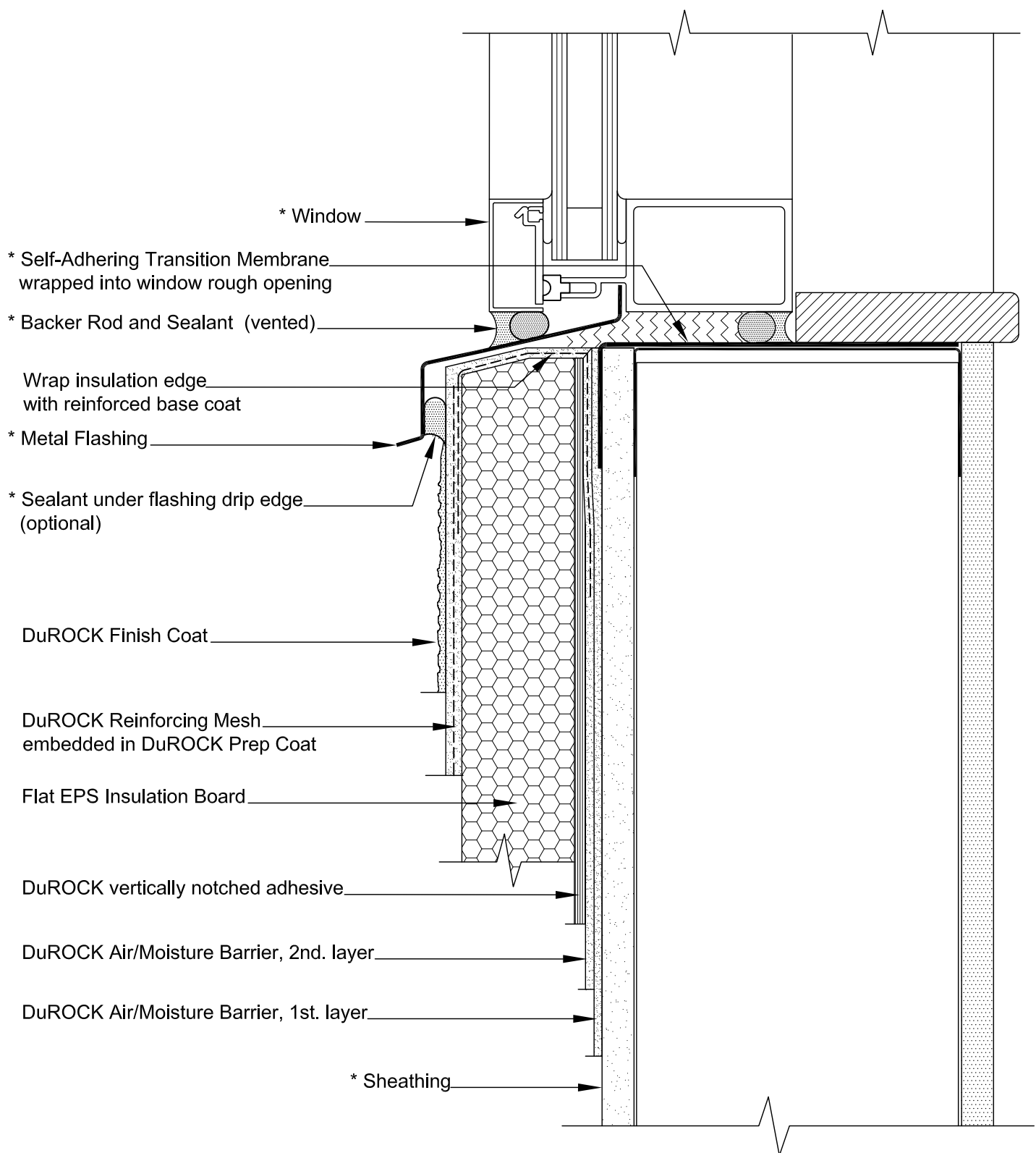
LAST REVISE: JAN 2019

ISSUED: MAR 2011

DRAWN: RIZ

SCALE: NTS

InsulROCK
D02



(* by others)

DuROCK SYSTEM:

InsulROCK-CHRC

(EIFS FOR COMMERCIAL AND HIGH RISE CONSTRUCTION)

DRAWING TITLE:

WINDOW SILL

This detail complements the corresponding system specification and illustrates the system configuration for the depicted construction. Visit www.durock.com for the latest revisions and contact DuROCK for project-specific details to suit conditions other than those depicted. DuROCK assumes no liability for the architecture, design, engineering, or workmanship of any project.

DuROCK

Alfacing International Limited

101-B ROYTEC ROAD
WOODBRIDGE, ONTARIO
TEL : (905) 856-0133, FAX : (905) 856-9654
www.durock.com

ARCHITECTURAL FINISHING SYSTEMS

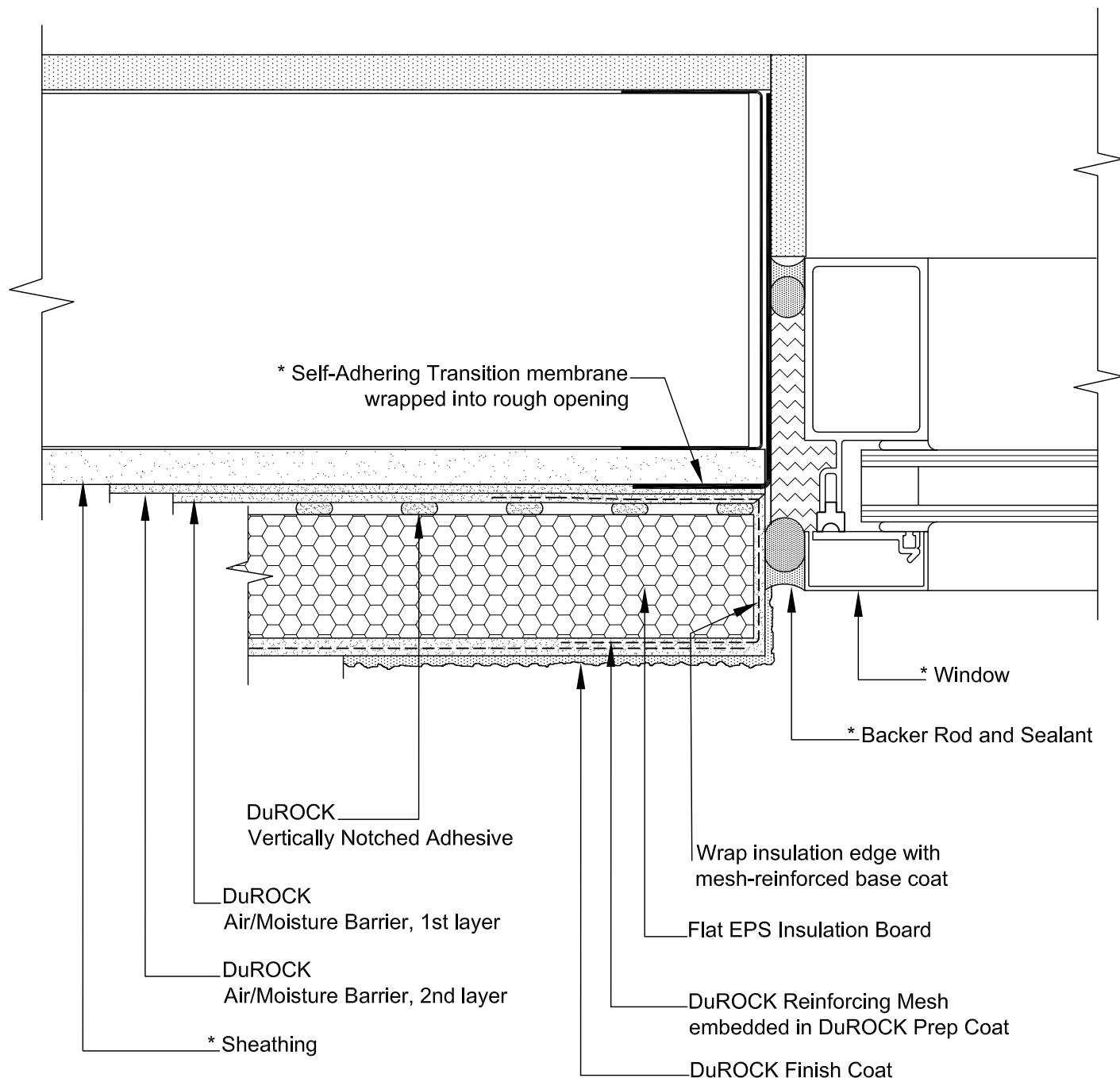
LAST REVISE: JAN 2019

ISSUED: MAR 2011

DRAWN: RIZ

SCALE: NTS

InsulROCK
D03



(* by others)

DuROCK SYSTEM:

InsulROCK-CHRC

(EIFS FOR COMMERCIAL AND HIGH RISE CONSTRUCTION)

DRAWING TITLE:

WINDOW JAMB (PLAN DETAIL)

This detail complements the corresponding system specification and illustrates the system configuration for the depicted construction. Visit www.durock.com for the latest revisions and contact DuROCK for project-specific details to suit conditions other than those depicted. DuROCK assumes no liability for the architecture, design, engineering, or workmanship of any project.

DuROCK

Alfacing International Limited

101-B ROYTEC ROAD
WOODBRIDGE, ONTARIO
TEL : (905) 856-0133, FAX : (905) 856-9654
www.durock.com

ARCHITECTURAL FINISHING SYSTEMS

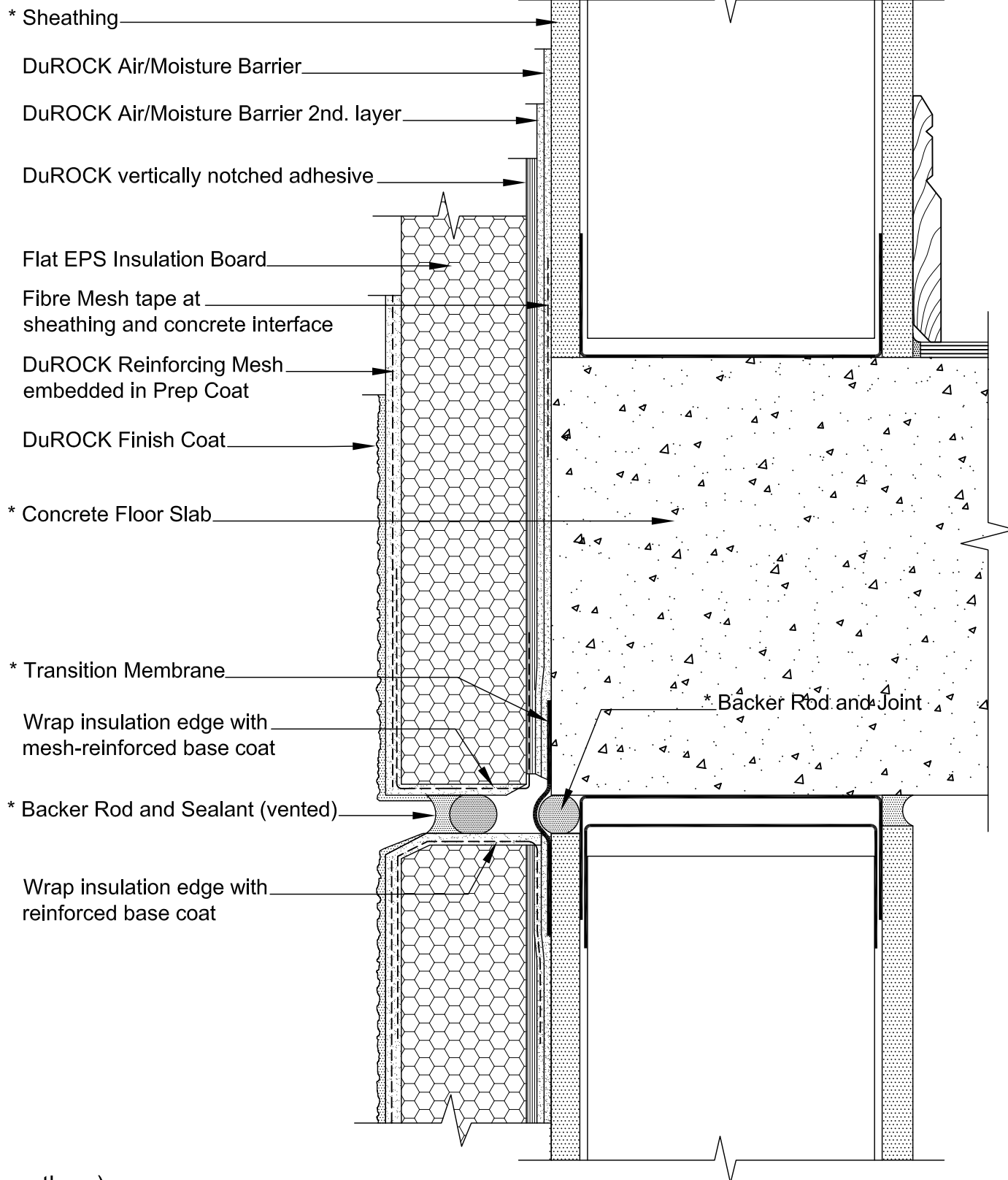
LAST REVISE: JAN 2019

ISSUED: MAR 2011

DRAWN: RIZ

SCALE: NTS

InsulROCK
D04



(* by others)

DuROCK SYSTEM:

InsulROCK-CHRC

(EIFS FOR COMMERCIAL AND HIGH RISE CONSTRUCTION)

DRAWING TITLE:

HORIZONTAL EXPANSION JOINT (SEALED OPTION)

This detail complements the corresponding system specification and illustrates the system configuration for the depicted construction. Visit www.durock.com for the latest revisions and contact DuROCK for project-specific details to suit conditions other than those depicted. DuROCK assumes no liability for the architecture, design, engineering, or workmanship of any project.

DuROCK

Alfacing International Limited

101-B ROYTEC ROAD
WOODBRIDGE, ONTARIO
TEL : (905) 856-0133, FAX : (905) 856-9654
www.durock.com

ARCHITECTURAL FINISHING SYSTEMS

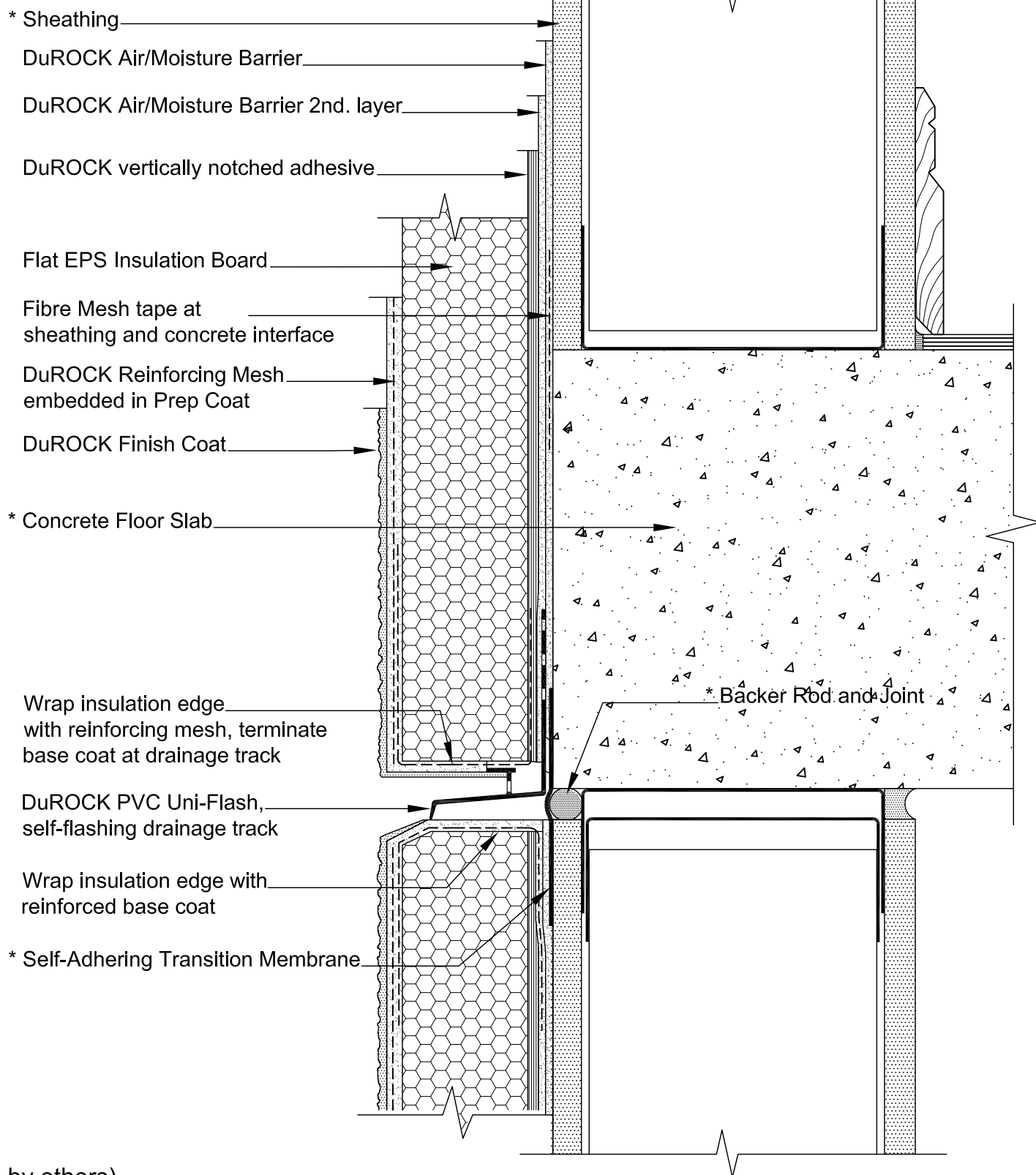
LAST REVISE: JAN 2019

ISSUED: MAR 2011

DRAWN: RIZ

SCALE: NTS

InsulROCK
D05



DuROCK SYSTEM:

InsulROCK-CHRC

(EIFS FOR COMMERCIAL AND HIGH RISE CONSTRUCTION)

DRAWING TITLE:

HORIZONTAL EXPANSION JOINT (DRAINED OPTION)

This detail complements the corresponding system specification and illustrates the system configuration for the depicted construction. Visit www.durock.com for the latest revisions and contact DuROCK for project-specific details to suit conditions other than those depicted. DuROCK assumes no liability for the architecture, design, engineering, or workmanship of any project.

DuROCK

Alfacing International Limited

101-B ROYTEC ROAD
WOODBRIDGE, ONTARIO
TEL : (905) 856-0133, FAX : (905) 856-9654
www.durock.com

ARCHITECTURAL FINISHING SYSTEMS

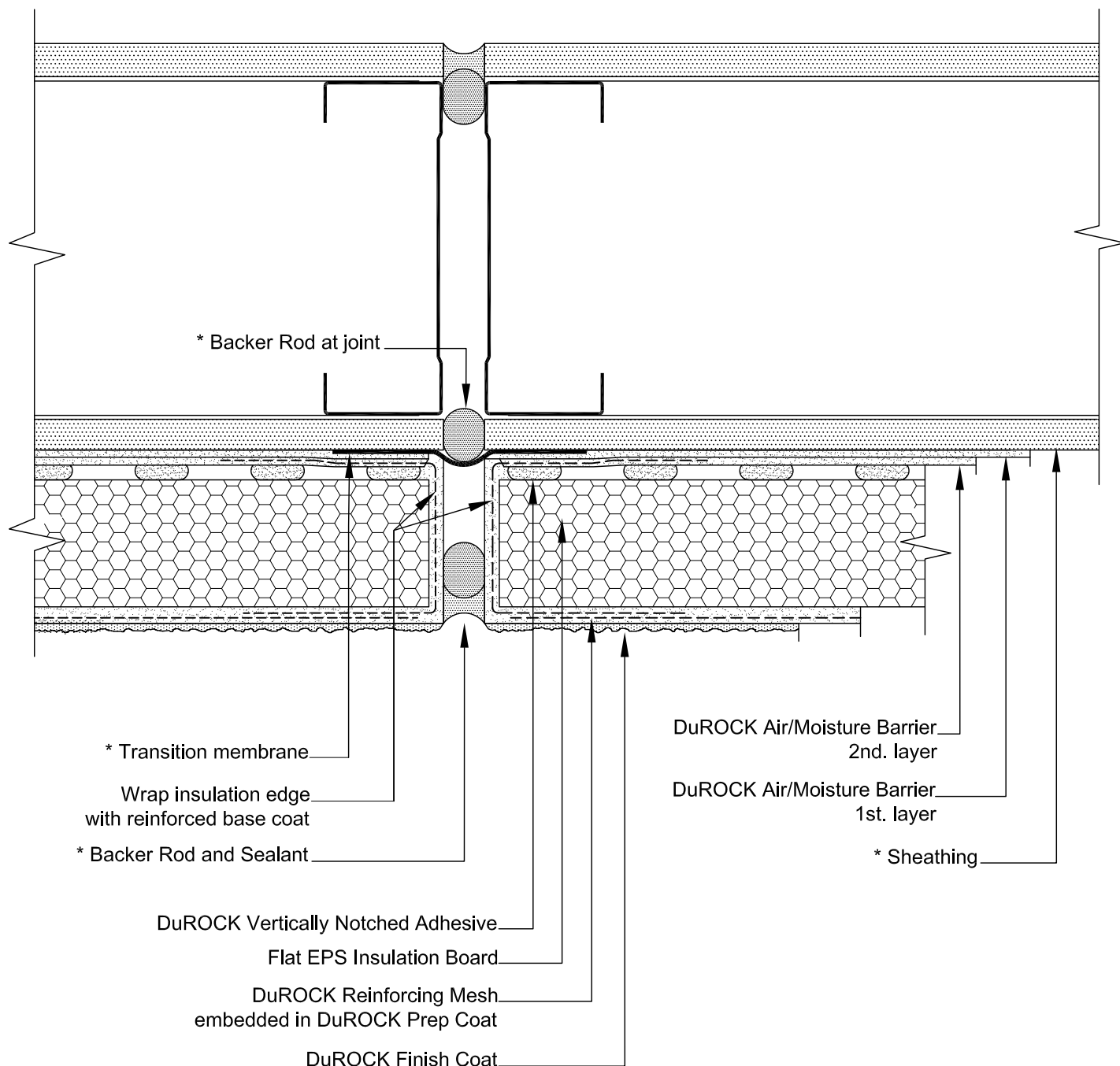
LAST REVISE: JAN 2019

ISSUED: MAR 2011

DRAWN: RIZ

SCALE: NTS

InsulROCK
D06



(* by others)

DuROCK SYSTEM:

InsulROCK-CHRC

(EIFS FOR COMMERCIAL AND HIGH RISE CONSTRUCTION)

DRAWING TITLE:

VERTICAL EXPANSION JOINT (PLAN DETAIL)

This detail complements the corresponding system specification and illustrates the system configuration for the depicted construction. Visit www.durock.com for the latest revisions and contact DuROCK for project-specific details to suit conditions other than those depicted. DuROCK assumes no liability for the architecture, design, engineering, or workmanship of any project.

DuROCK

Alfacing International Limited

101-B ROYTEC ROAD
WOODBRIDGE, ONTARIO
TEL : (905) 856-0133, FAX : (905) 856-9654
www.durock.com

ARCHITECTURAL FINISHING SYSTEMS

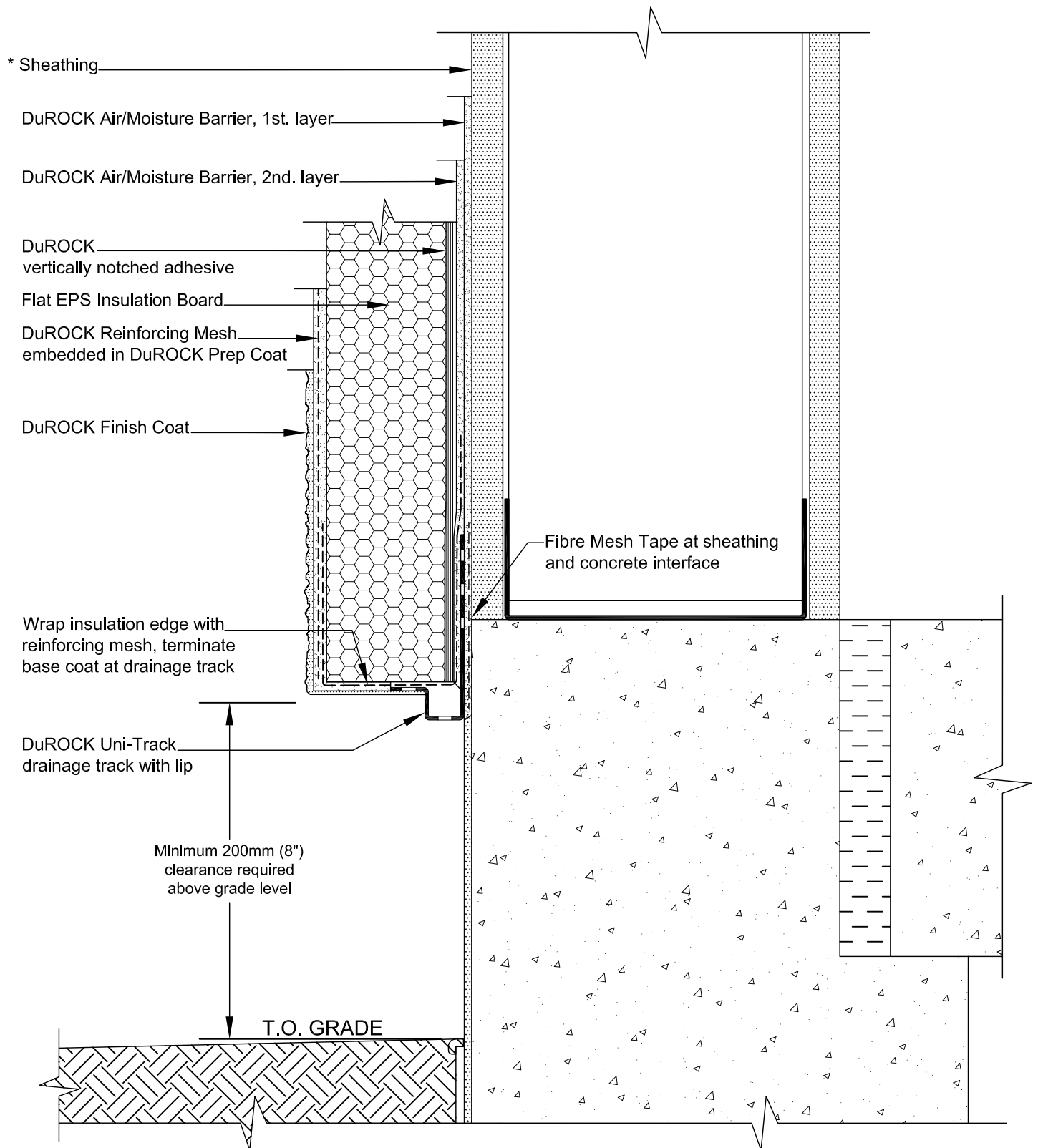
LAST REVISE: JAN 2019

ISSUED: MAR 2011

DRAWN: RIZ

SCALE: NTS

InsulROCK
D07



(* by others)

DuROCK SYSTEM:

InsulROCK-CHRC

(EIFS FOR COMMERCIAL AND HIGH RISE CONSTRUCTION)

DRAWING TITLE:

TERMINATION AT GRADE

This detail complements the corresponding system specification and illustrates the system configuration for the depicted construction. Visit www.durock.com for the latest revisions and contact DuROCK for project-specific details to suit conditions other than those depicted. DuROCK assumes no liability for the architecture, design, engineering, or workmanship of any project.

DuROCK

Alfacing International Limited

101-B ROYTEC ROAD
WOODBRIDGE, ONTARIO
TEL : (905) 856-0133, FAX : (905) 856-9654
www.durock.com

ARCHITECTURAL FINISHING SYSTEMS

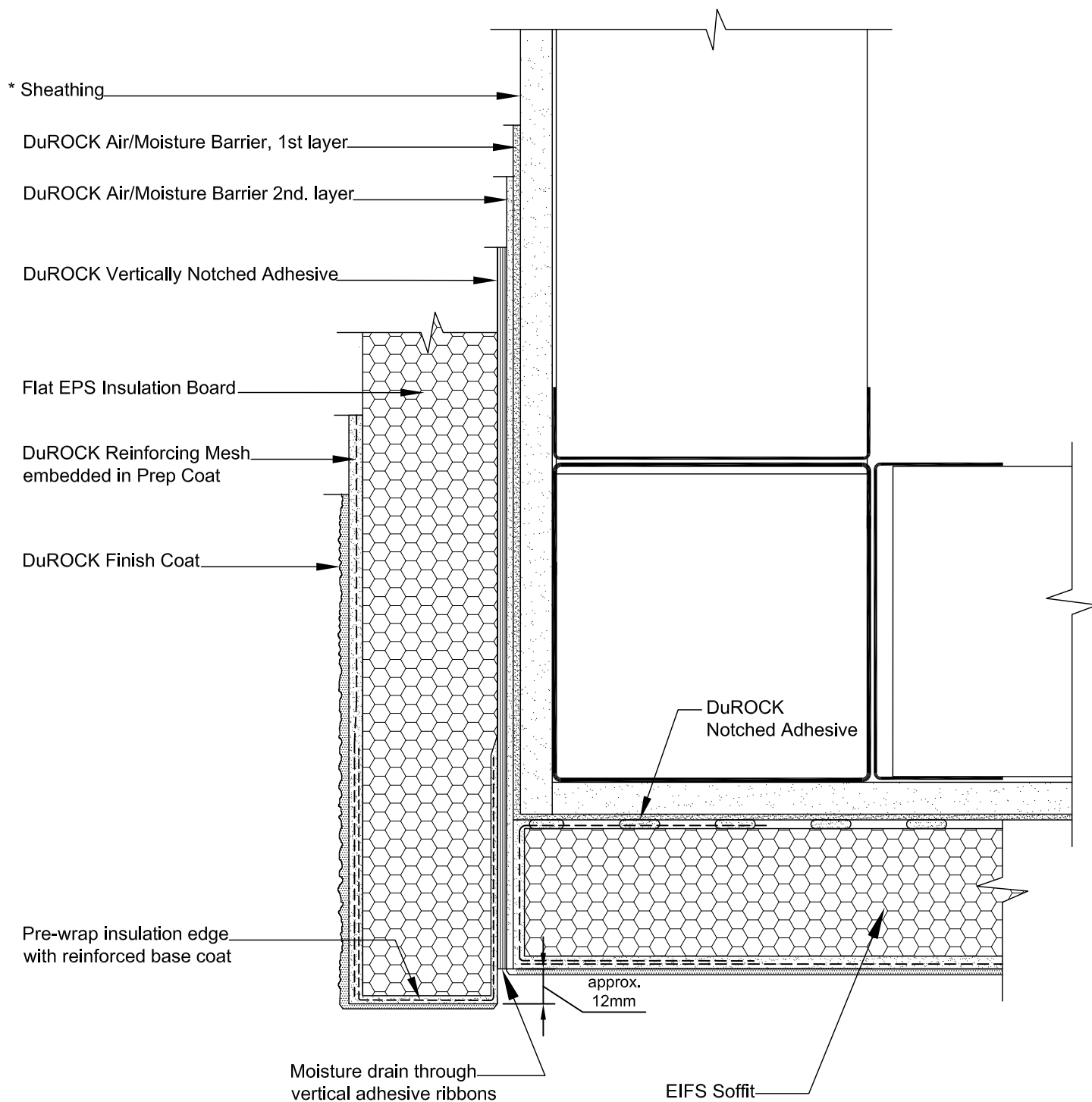
LAST REVISE: JAN 2019

ISSUED: MAR 2011

DRAWN: RIZ

SCALE: NTS

InsulROCK
D08



(* by others)

DuROCK SYSTEM:

InsulROCK-CHRC

(EIFS FOR COMMERCIAL AND HIGH RISE CONSTRUCTION)

DRAWING TITLE:

TERMINATION AT EIFS SOFFIT (OPTION 1)

This detail complements the corresponding system specification and illustrates the system configuration for the depicted construction. Visit www.durock.com for the latest revisions and contact DuROCK for project-specific details to suit conditions other than those depicted. DuROCK assumes no liability for the architecture, design, engineering, or workmanship of any project.

DuROCK

Alfacing International Limited

101-B ROYTEC ROAD
WOODBRIDGE, ONTARIO
TEL : (905) 856-0133, FAX : (905) 856-9654
www.durock.com

ARCHITECTURAL FINISHING SYSTEMS

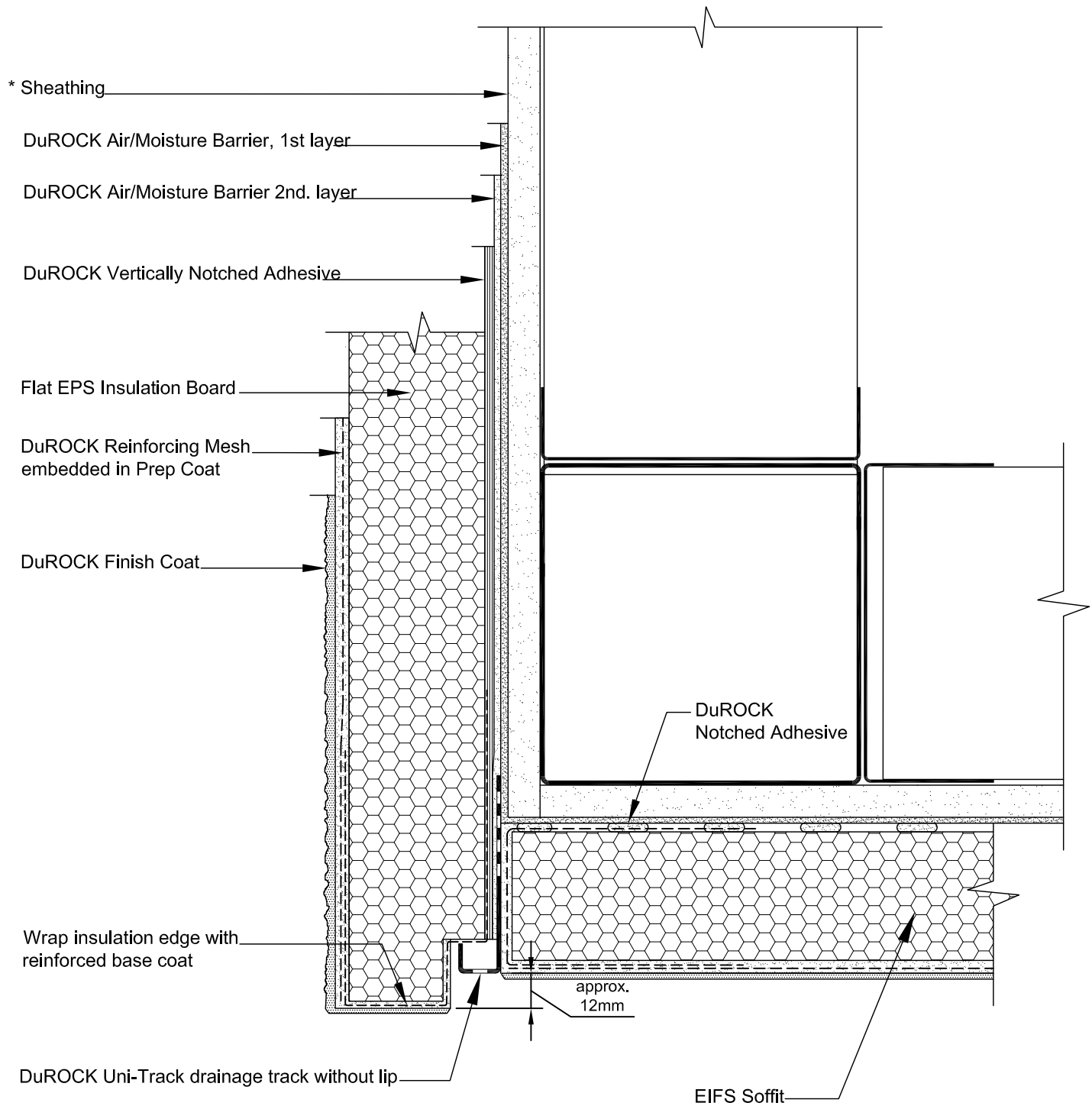
LAST REVISE: JAN 2019

ISSUED: MAR 2011

DRAWN: RIZ

SCALE: NTS

InsulROCK
D09



(* by others)

DuROCK SYSTEM:

InsulROCK-CHRC

(EIFS FOR COMMERCIAL AND HIGH RISE CONSTRUCTION)

DRAWING TITLE:

TERMINATION AT EIFS SOFFIT (OPTION 2)

This detail complements the corresponding system specification and illustrates the system configuration for the depicted construction. Visit www.durock.com for the latest revisions and contact DuROCK for project-specific details to suit conditions other than those depicted. DuROCK assumes no liability for the architecture, design, engineering, or workmanship of any project.

DuROCK

Alfacing International Limited

101-B ROYTEC ROAD
WOODBRIDGE, ONTARIO
TEL : (905) 856-0133, FAX : (905) 856-9654
www.durock.com

ARCHITECTURAL FINISHING SYSTEMS

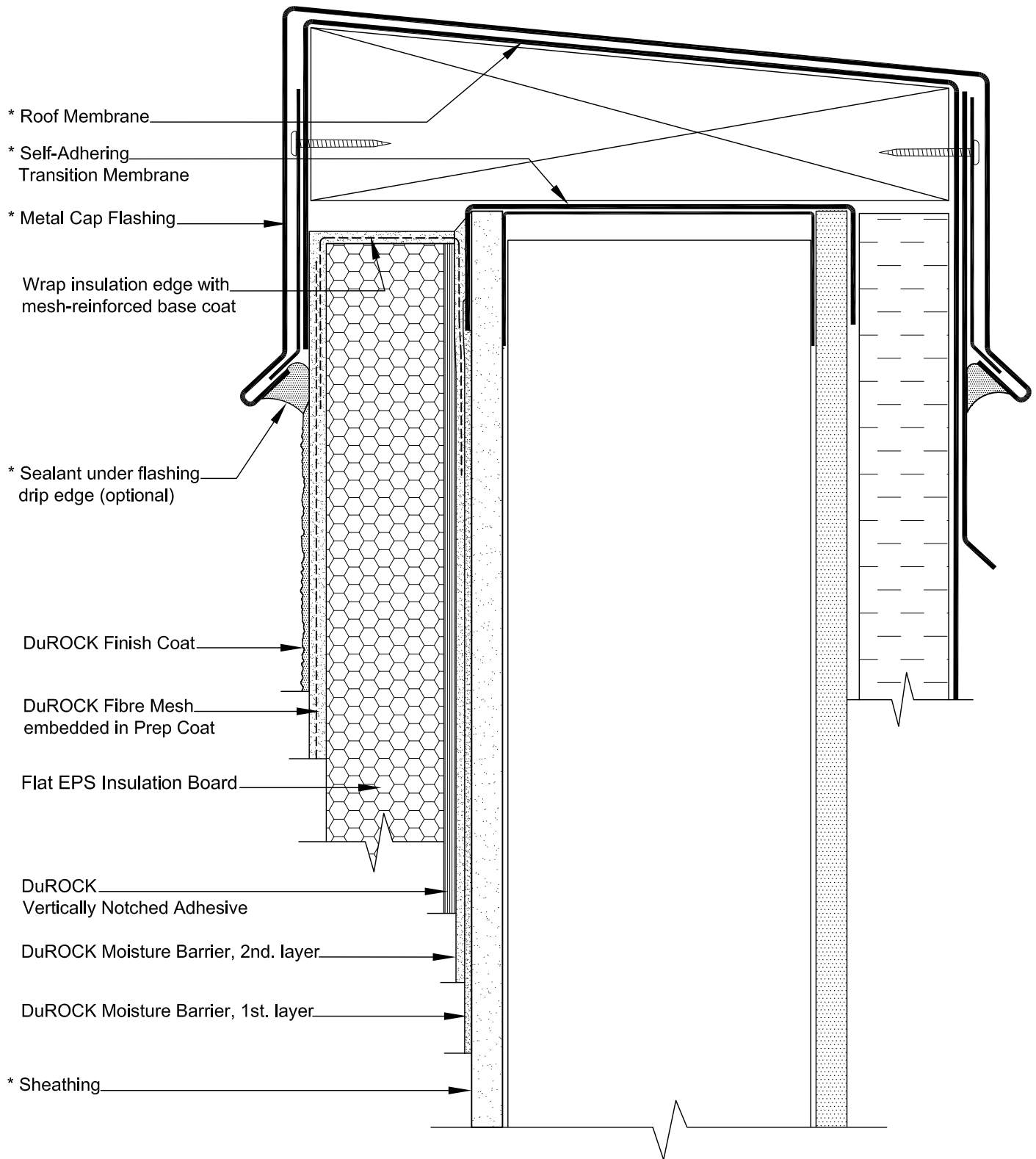
LAST REVISE: JAN 2019

ISSUED: MAR 2011

DRAWN: RIZ

SCALE: NTS

InsulROCK
D10



(* by others)

DuROCK SYSTEM:

InsulROCK-CHRC

(EIFS FOR COMMERCIAL AND HIGH RISE CONSTRUCTION)

DRAWING TITLE:

TERMINATION AT ROOF TOP PARAPET

This detail complements the corresponding system specification and illustrates the system configuration for the depicted construction. Visit www.durock.com for the latest revisions and contact DuROCK for project-specific details to suit conditions other than those depicted. DuROCK assumes no liability for the architecture, design, engineering, or workmanship of any project.

DuROCK

Alfacing International Limited

101-B ROYTEC ROAD
WOODBRIDGE, ONTARIO
TEL : (905) 856-0133, FAX : (905) 856-9654
www.durock.com

ARCHITECTURAL FINISHING SYSTEMS

LAST REVISE: JAN 2019

ISSUED: MAR 2011

DRAWN: RIZ

SCALE: NTS

InsulROCK
D11